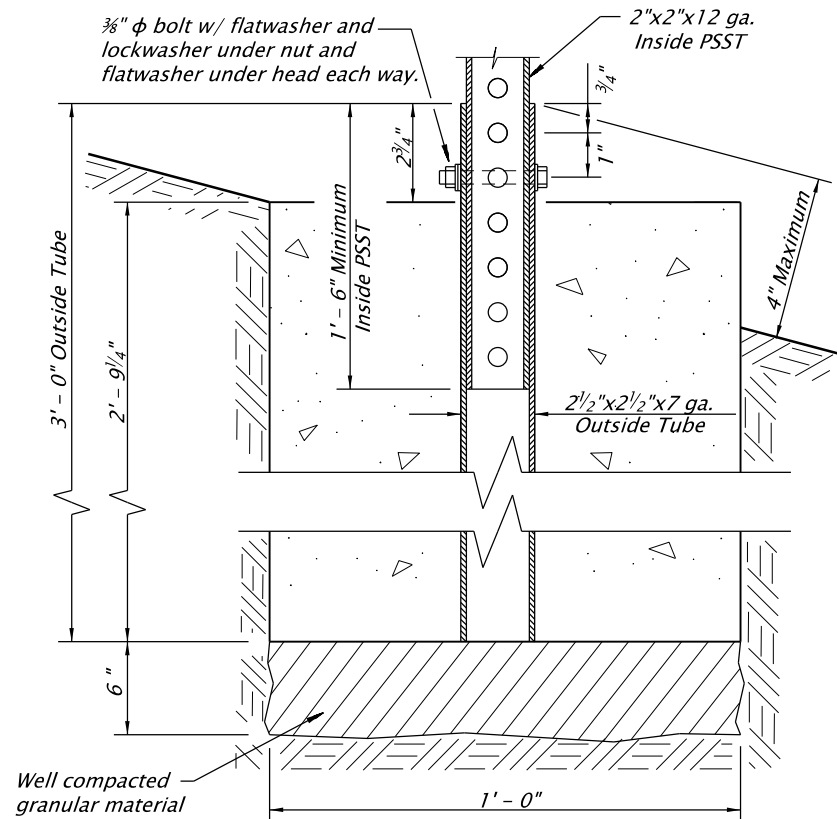
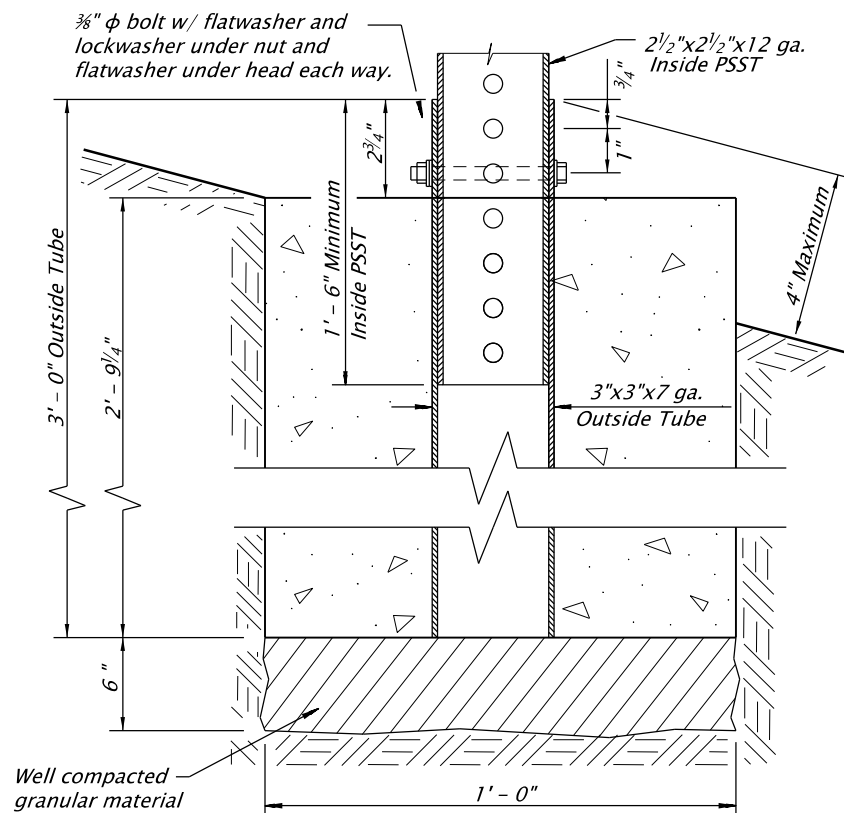


2" ANCHOR DETAIL
No scale



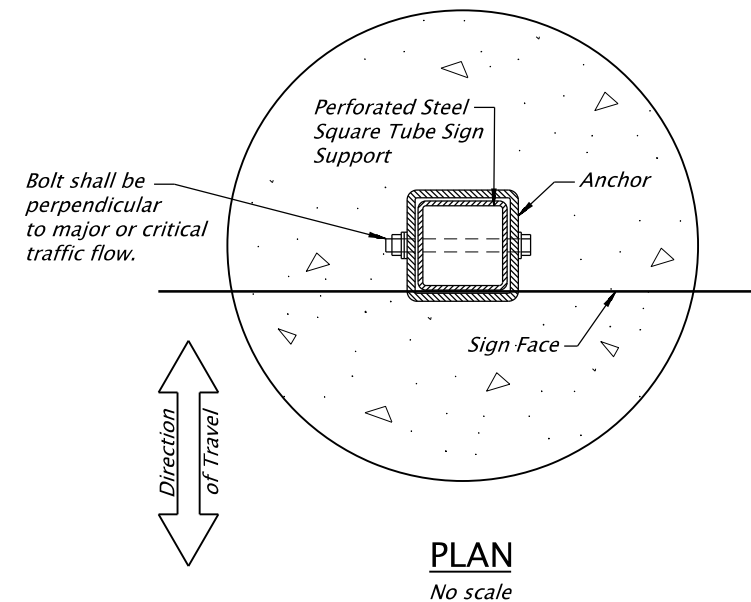
2" OPTIONAL ANCHOR DETAIL
No scale



2 1/2" ANCHOR DETAIL
No scale

General Notes:

1. Material grade for base hardware connection shall be according to the manufacturer's recommendation and based on crash testing.
2. Anchor steel shall be hot dipped galvanized or approved equal.
3. Footing concrete shall be Commercial Grade Concrete ($f_c = 3000$ psi) per Specification 00440. The CGC mixture may be accepted at the site of placement according to 00440.14.
4. The estimated concrete volume is .09 cubic yards.



Accompanied by dwgs. TM681, TM688

<p>The selection and use of this Standard Drawing, while designed in accordance with generally accepted engineering principles and practices, is the sole responsibility of the user and should not be used without first consulting a Registered Professional Engineer.</p>		All materials shall be in accordance with the current Oregon Standard Specifications.	
		OREGON STANDARD DRAWINGS	
		PERFORATED STEEL SQUARE TUBE (PSST) ANCHOR FOUNDATION	
		2021	
DATE	REVISION	DESCRIPTION	
CALC. BOOK NO. 5752	SDR DATE 06-JAN-2012	TM687	