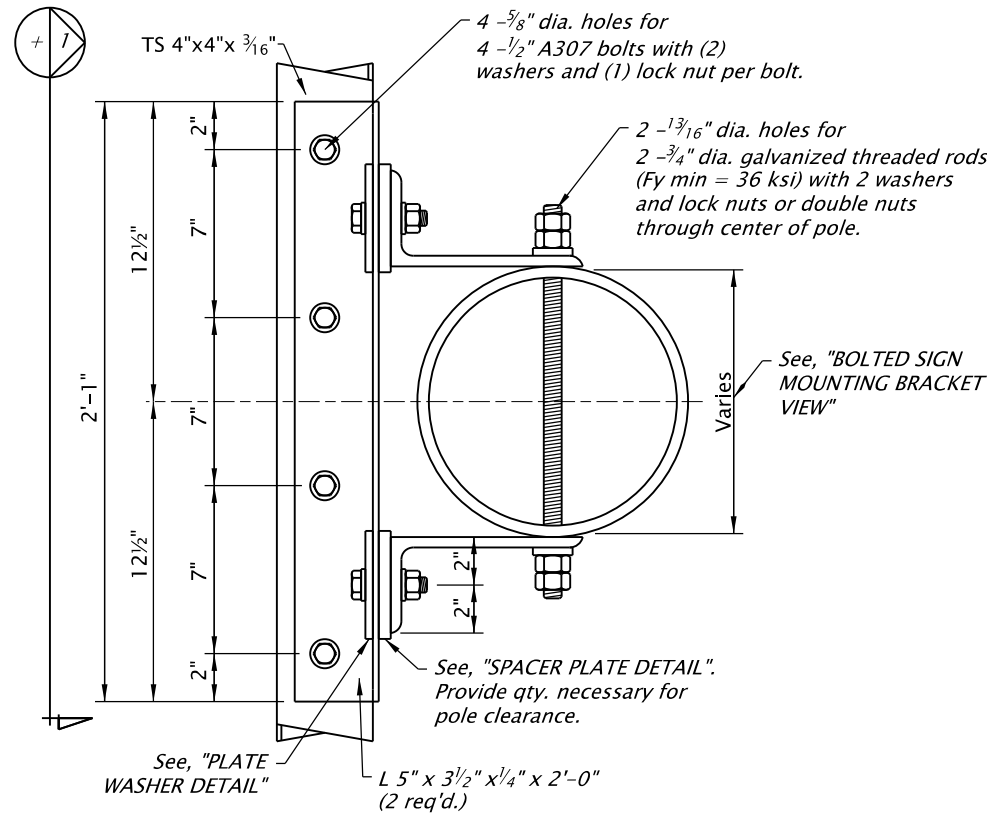


SIGNAL POLE MOUNT ELEVATION
No Scale



SECTION B-B
No Scale

GENERAL NOTES:

1. High strength bolts shall conform to ASTM specification A325. All other bolts shall conform to ASTM specification A307.
2. Structural steel shall conform to ASTM A36.
3. All steel and bolts shall be hot-dip galvanized after fabrication.
4. Surfaces of holes drilled in poles shall be galvanized according to ASTM A780.
5. Maximum sign size is 60 sq. ft. for this signal pole mount.
6. Any signal pole intended to support one of these mounts must first be analyzed to determine if the load-bearing capacity is sufficient to support this extra load.
7. Structural tubing shall conform to ASTM specification A500, Grade "B" or A501.
8. Cantilever sign to meet lateral clearance requirements and must be kept entirely within the Right-of-Way.
9. Field check pole diameters at mounting heights and cut upper and lower attachment plates to fit.

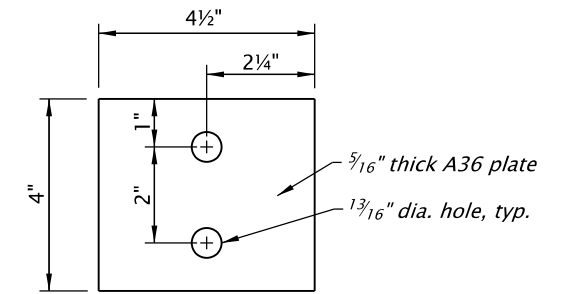
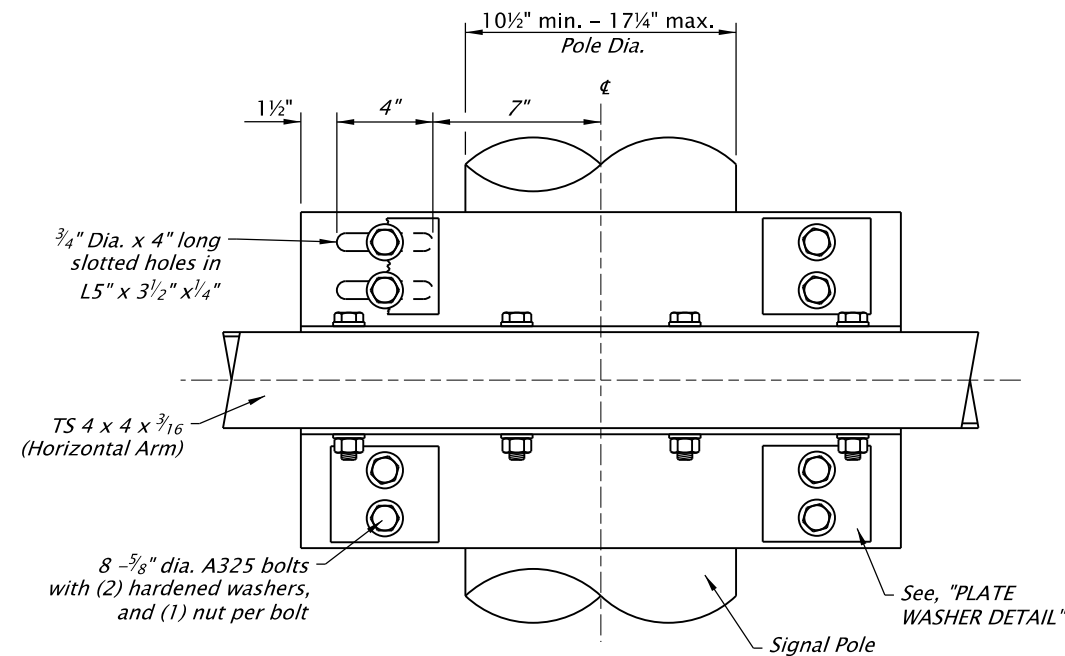
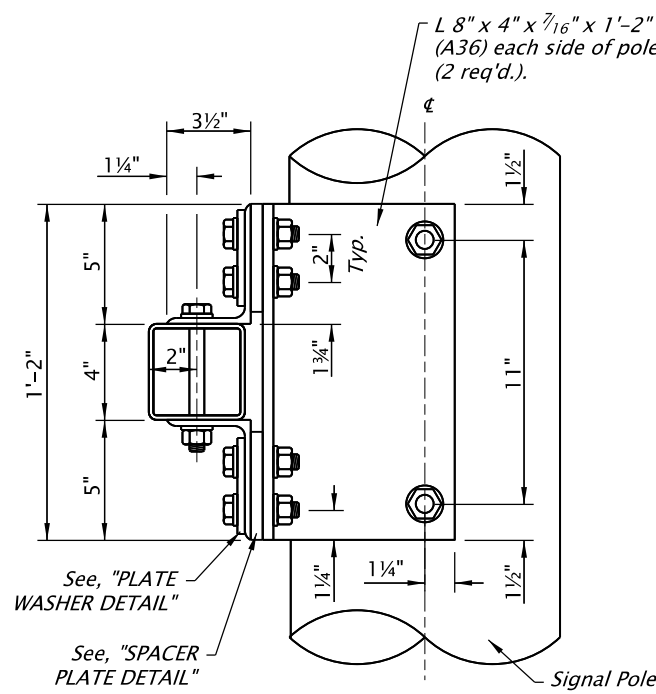


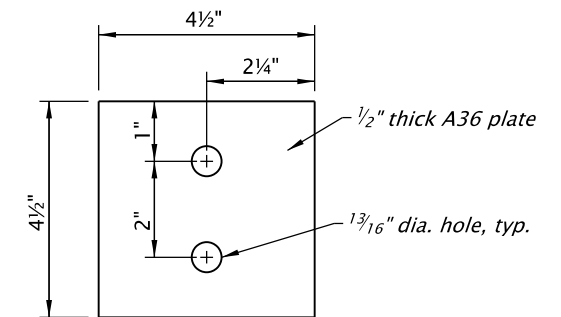
PLATE WASHER DETAIL
No Scale



BOLTED SIGN MOUNTING BRACKET VIEW
No Scale



SECTION A-A
No Scale



SPACER PLATE DETAIL
No Scale

The selection and use of this Standard Drawing, while designed in accordance with generally accepted engineering principles and practices, is the sole responsibility of the user and should not be used without first consulting a Registered Professional Engineer.

All materials shall be in accordance with the current Oregon Standard Specifications.			
OREGON STANDARD DRAWINGS			
SIGNAL POLE MOUNTS			
2021			
DATE	REVISION DESCRIPTION		
CALC. BOOK NO.	N/A	SDR DATE	07-JAN-2013
			TM680