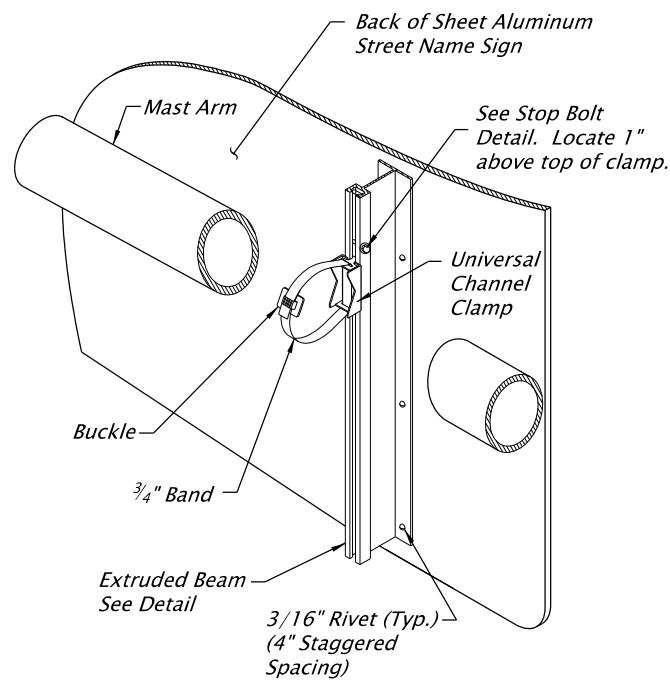


Mast Arm Street Name Mount Requirements				
Sign Length "L"	Maximum Sign Height "Z"	Maximum Edge Distance "X"	Maximum Support Spacing "Y"	Number of Extruded Beam Locations
"L" Less than or Equal to 4'-0"	30"	"L"/4	"L"/2	2
"L" Greater than > 4'-0" and "L" less than or Equal to 8'-0"	30"	1'-0"	3'-0"	3
"L" Greater than > 8'-0" and "L" less than or Equal to 10'-0"	21"	1'-0"	2'-8"	4
"L" Greater than > 10'-0" and "L" less than or Equal to 12'-0"	21"	1'-0"	2'-6"	5

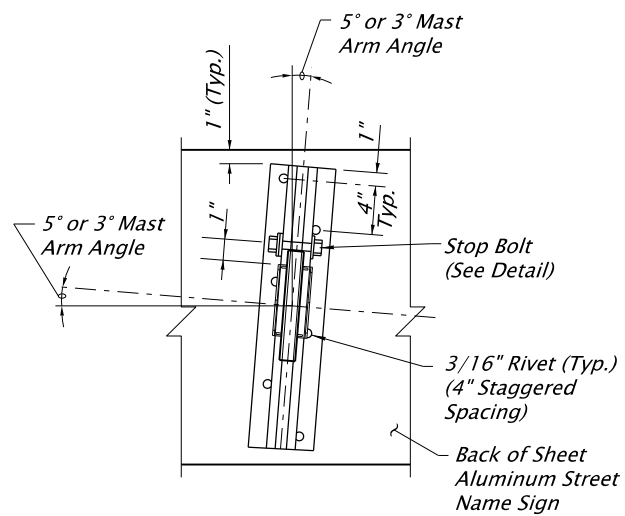
**MAST ARM STREET NAME SIGN MOUNT**

No Scale



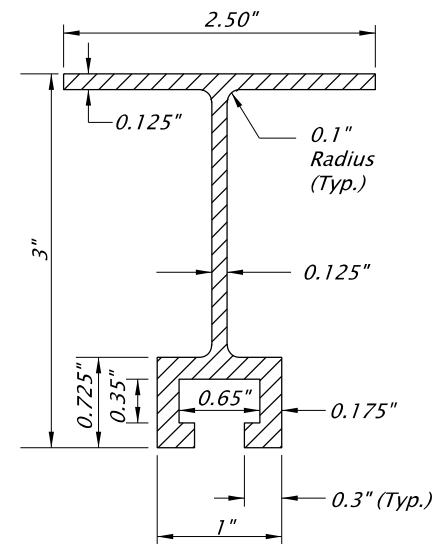
**TYPICAL MAST ARM INSTALLATION**

No Scale



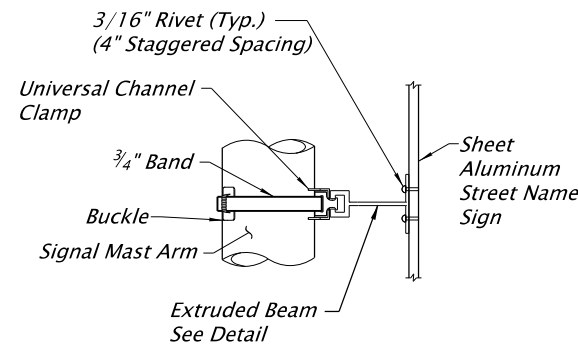
**DETAIL A**

No Scale



**EXTRUDED BEAM DETAIL**

No Scale

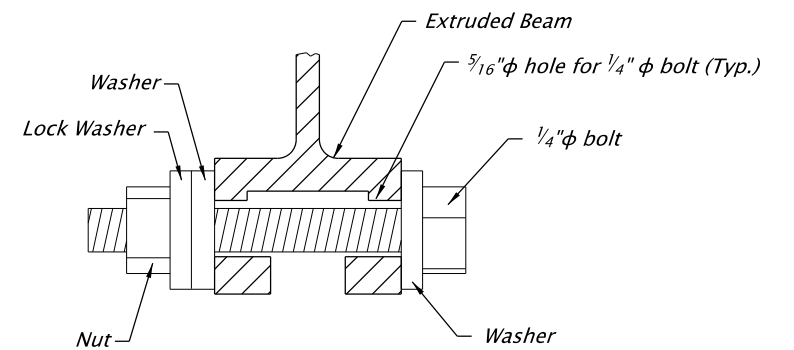


**DETAIL VIEW B**

No Scale

**GENERAL NOTES:**

1. Physical fit of the sign must be verified. The edges of the street name sign shall not be within 6" of other signs or the mast arm connection flanges.
2. Equal spaces top and bottom.
3. The top of the street name sign shall be leveled.
4. Extruded Beams are to be set at an angle perpendicular to the mast arm.
5. Material for extruded beam shall be ASTM B 221 6061-T6 Aluminum.
6. Material for 3/4" Band shall be 3/4" wide, 0.03" thick, and ASTM A 666, Type 201 Stainless Steel.
7. Material for the Sign Bracket, Universal Channel Clamp, and buckle shall be ASTM A 666, Type 201 Stainless Steel.
8. Existing signal poles must be analyzed to verify that the pole and foundation can support the new street name sign loading. See TM650 for allowable street name sizes on new installations.



1. All hardware to be Type 316 Stainless Steel.
2. Locate 1" above the top of the Universal Channel Clamp.

**STOP BOLT DETAIL**

No Scale

The selection and use of this Standard Drawing, while designed in accordance with generally accepted engineering principles and practices, is the sole responsibility of the user and should not be used without first consulting a Registered Professional Engineer.

All materials shall be in accordance with the current Oregon Standard Specifications.			
<b>OREGON STANDARD DRAWINGS</b>			
<b>SIGNAL MAST ARM STREET NAME SIGN MOUNTS</b>			
2021			
DATE	REVISION DESCRIPTION		
CALC. BOOK NO.	N/A	SDR DATE	06-JAN-2012
			<b>TM679</b>