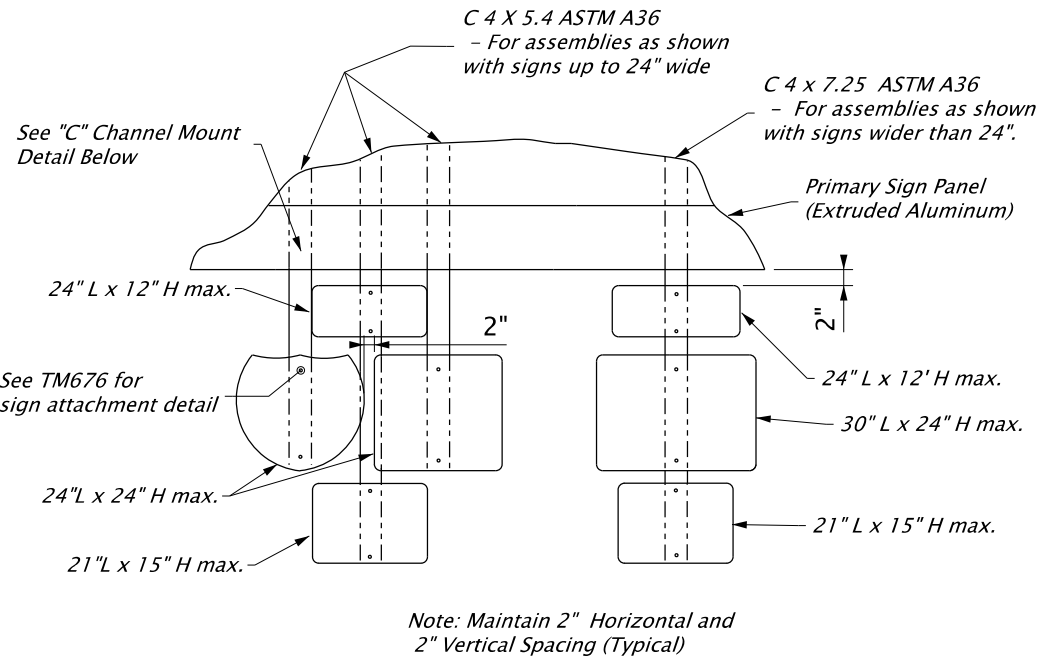
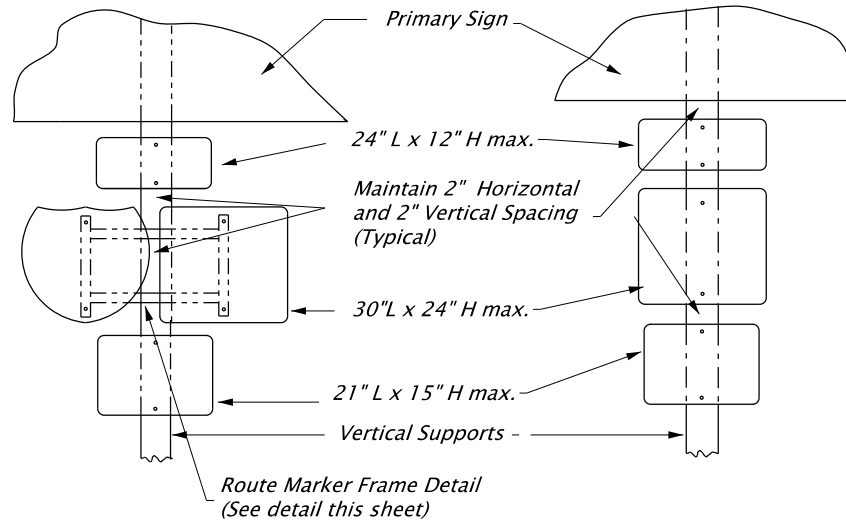


07-JAN-2022

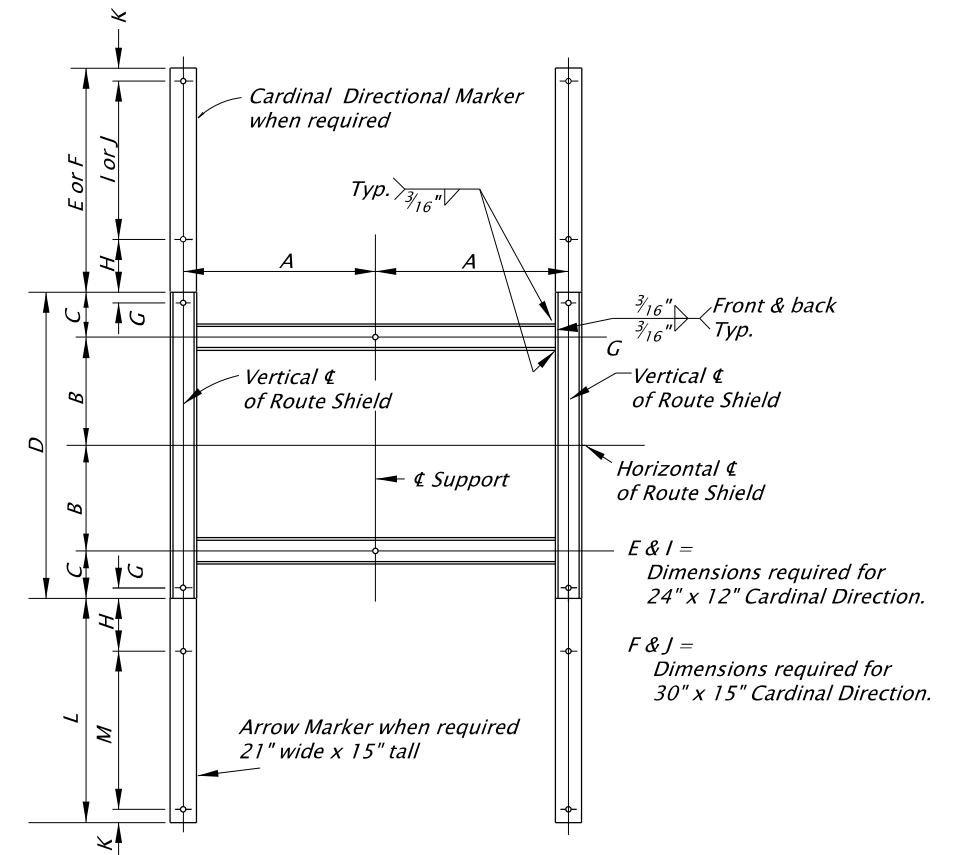
TM678.dgn



ROUTE MARKERS MOUNTED TO EXTRUDED PANELS
No Scale



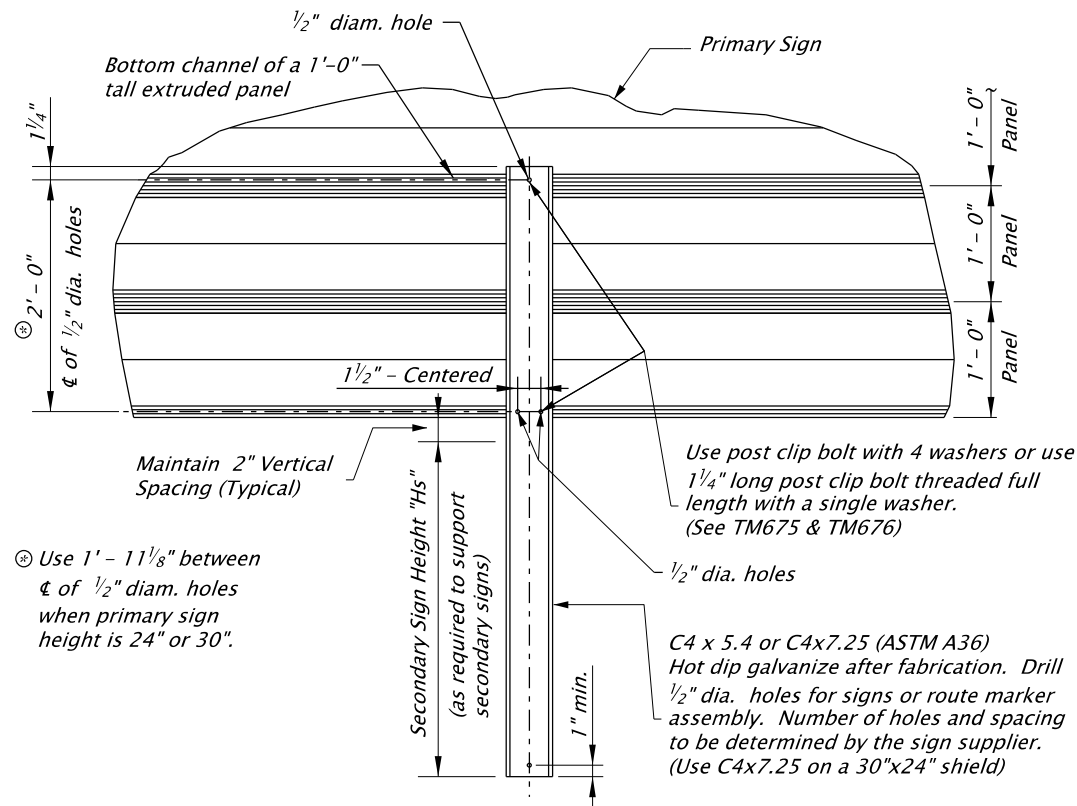
ROUTE MARKERS MOUNTED TO VERTICAL SUPPORTS
No Scale



Shield Sizes (in inches)	A	B	C	D	E	F	G	H	I	J	K	L	M
2 - 24" x 24"	13	8	3 1/2	23	14	17	3/4	4	9	12	1	17	12
1 - 24" x 24" & 1-30" x 24"	14 1/2	8	3 1/2	23	14	17	3/4	4	9	12	1	17	12
2 - 30" x 24"	16	8	3 1/2	23	14	17	3/4	4	9	12	1	17	12
2 - 36" x 36"	19	12	5 1/2	35	14	17	1 3/8	4	9	12	1	17	12
1 - 36" x 36" & 1-45" x 36"	21 1/4	12	5 1/2	35	14	17	1 3/8	4	9	12	1	17	12
2 - 45" x 36"	23 1/2	12	5 1/2	35	14	17	1 3/8	4	9	12	1	17	12

Note: Route Marker frames shall be constructed from 2" x 2" x 3/16" ASTM A53 GR B tubing, galvanized after fabrication. Provide 7/16" holes, 3/8" galvanized steel bolts, washers, and lock-nuts for mounting route marker frame to post. For sign attachments see TM676.

ROUTE MARKER FRAME DETAIL
No Scale



"C" CHANNEL CONNECTION DETAIL
No Scale

Accompanied by dwgs. TM675, TM676

<p>The selection and use of this Standard Drawing, while designed in accordance with generally accepted engineering principles and practices, is the sole responsibility of the user and should not be used without first consulting a Registered Professional Engineer.</p>		<p>All materials shall be in accordance with the current Oregon Standard Specifications.</p>	
		<p>OREGON STANDARD DRAWINGS</p> <p>SECONDARY SIGN MOUNTING DETAILS</p> <p>2021</p>	
		DATE	REVISION DESCRIPTION
01-2022	REVISED "C" CHANNEL DETAILS AND ADDED 30" SIGN TO CUSTOM HOLE SPACING		
CALC. BOOK NO.	N/A	SDR DATE	07-JAN-2022
			TM678

Effective Date: June 1, 2023 - November 30, 2023