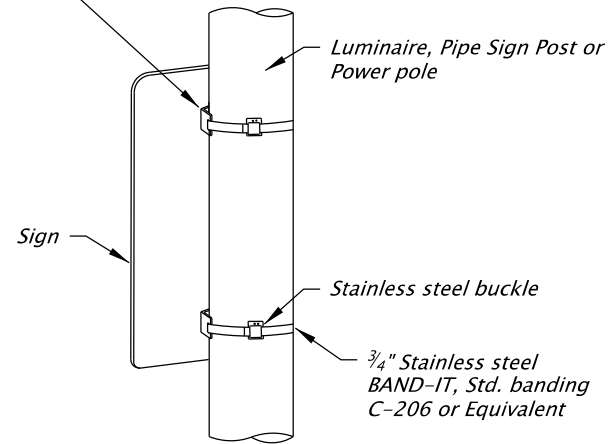


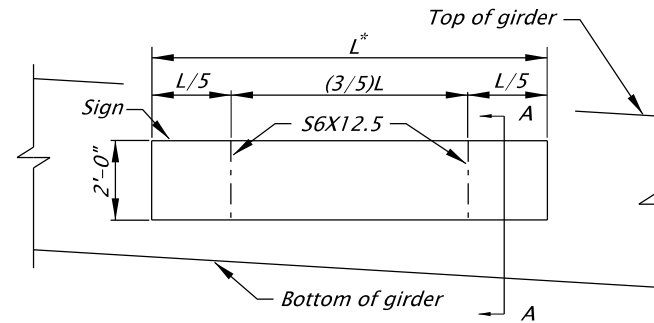
Stainless steel sign bracket  
(one per band)



Signs mounted to vertical posts that use stainless steel clamps shall not be wider than 36". Use 2 clamps for all signs less than 48" in height and 3 clamps for signs 48" to 60" in height.

**STAINLESS STEEL CLAMP (SSC) DETAIL**

No Scale

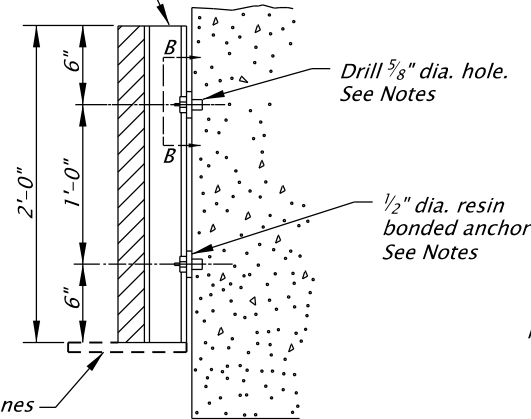


\* - L maximum is 14'-0".

**SIGN ELEVATION**

No Scale

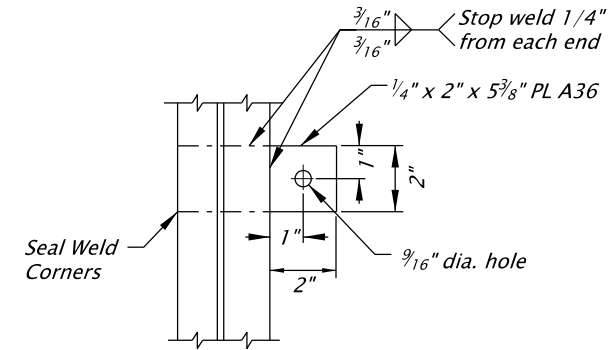
S6X12.5 - A36  
Hot Dipped Galvanized



**SECTION A-A**

No Scale

Signs mounted over travel lanes shall use the SIGN SUPPORT BRACKET DETAIL shown on TM618



**SECTION B-B**

No Scale

Notes:

1. Install resin bonded anchors according to Section 00535.
2. Resin bonded anchors shall conform to ASTM A307.
3. The hole depths shall develop the pullout strength specified in Table 00535-1.
4. Tighten 1/2" dia. anchors using 16 ft-lb of torque for waxed galvanized and 40 ft-lb of torque for galvanized only connections.

**ROAD NAME SIGN STRUCTURE MOUNT DETAIL**

**GENERAL NOTES**

1. For Secondary Sign Mounts See TM678.

<p>The selection and use of this Standard Drawing, while designed in accordance with generally accepted engineering principles and practices, is the sole responsibility of the user and should not be used without first consulting a Registered Professional Engineer.</p>		All materials shall be in accordance with the current Oregon Standard Specifications.	
		<b>OREGON STANDARD DRAWINGS</b>	
		<b>SIGN MOUNTS</b>	
		2021	
DATE	REVISION	DESCRIPTION	
CALC. BOOK NO.	N/A	SDR DATE	06-JUL-2015
			<b>TM677</b>