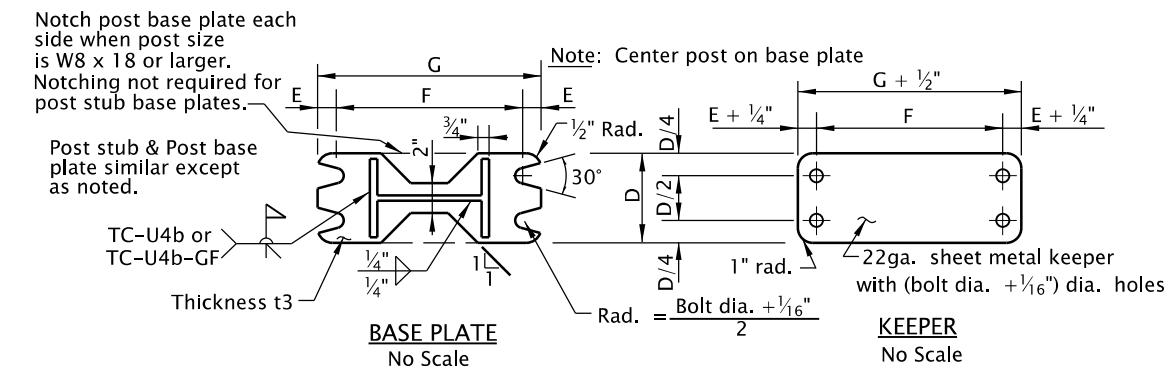
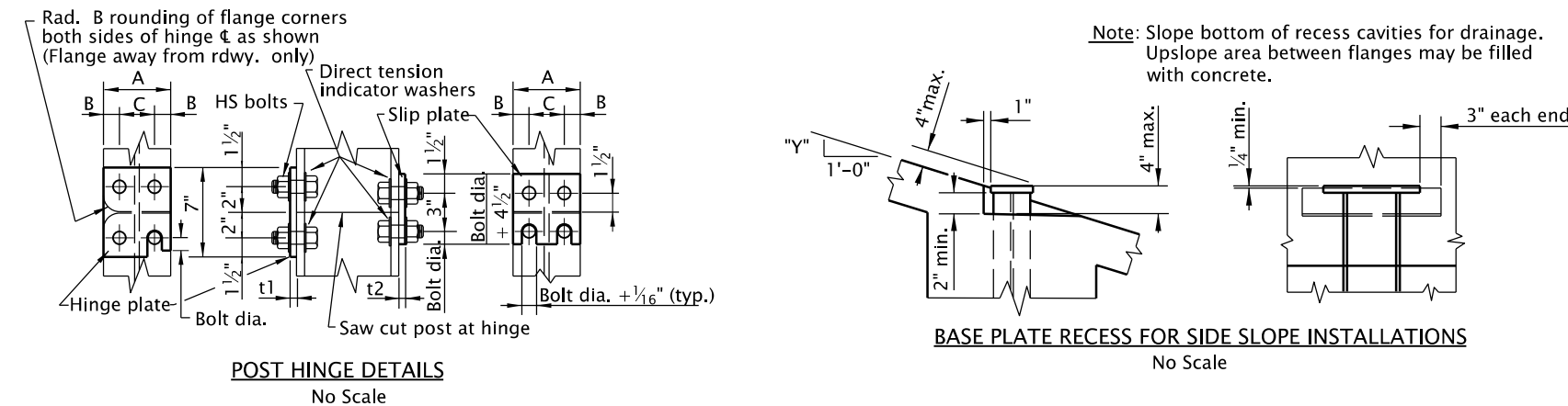
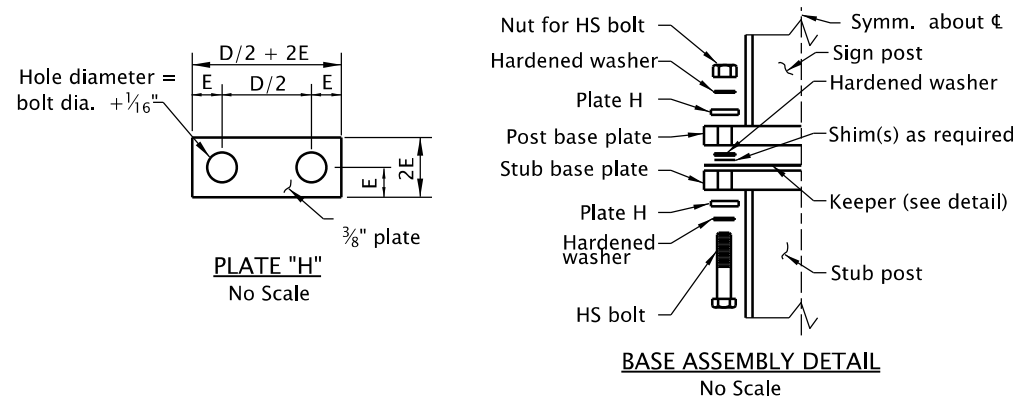


Post & Stub	Hinge Data							Base Plate Data							Footing Data		Min. Footing Depth			Max. Footing Slope				
	Depth & Mass/ft	Hinge t1	Slip t2	A	B	C	Hinge Bolts		Base t3	D	E	F	G	Bolt				Stub Length	V bars	2'-0" dia.	3'-0" dia.	4'-0" dia.	Rise per ft. "Y"	Grade
							Dia.	Length						dia.	"T1" Torque	"T2" Torque	Length							
W6 x 9	3/8"	3/8"	4"	7/8"	2 1/4"	3/4"	2"	1"	4 1/4"	3/4"	8 1/2"	10"	5/8"	150 ft.-lb.	50 ft.-lb.	4 1/4"	2'-0"	#4	4'-9"	—	—	12"	1V:1.00H	
W6 x 12	3/8"	3/8"	4"	7/8"	2 1/4"	3/4"	2"	1"	4 1/2"	3/4"	8 1/2"	10"	5/8"	150 ft.-lb.	50 ft.-lb.	4 1/4"	2'-4"	#5	5'-6"	—	—	11 1/4"	1V:1.07H	
W6 x 15	3/8"	1/2"	6"	1 1/4"	3 1/2"	7/8"	2 1/2"	1"	6 1/4"	7/8"	8 1/2"	10 1/4"	3/4"	280 ft.-lb.	70 ft.-lb.	4 1/2"	2'-8"	#6	6'-6"	—	—	7 1/4"	1V:1.66H	
W8 x 18	1/2"	1/2"	5 1/4"	1 1/4"	2 3/4"	7/8"	2 1/2"	1 3/8"	5 1/2"	7/8"	11 3/4"	1'-1 1/2"	3/4"	280 ft.-lb.	70 ft.-lb.	5"	3'-0"	#7	8'-0"	6'-6"	—	8 1/2"	1V:1.41H	
W8 x 21	1/2"	5/8"	5 1/4"	1 1/4"	2 3/4"	1"	2 3/4"	1 3/8"	6"	1"	11 3/4"	1'-3 1/4"	7/8"	450 ft.-lb.	80 ft.-lb.	5 1/4"	3'-4"	#8	8'-9"	7'-0"	—	7 1/2"	1V:1.60H	
W10 x 22	1/2"	5/8"	5 3/4"	1 1/2"	2 3/4"	1"	2 3/4"	1 3/8"	6"	1"	1'-1 1/2"	1'-3 1/2"	7/8"	450 ft.-lb.	80 ft.-lb.	5 1/4"	3'-8"	#8	10'-3"	7'-9"	6'-6"	7 1/2"	1V:1.60H	
W10 x 26	1/2"	5/8"	5 3/4"	1 1/2"	2 3/4"	1 1/8"	3"	1 3/8"	7"	1 1/8"	1'-1 1/2"	1'-3 3/4"	1"	680 ft.-lb.	90 ft.-lb.	5 1/2"	4'-0"	#9	11'-0"	8'-9"	7'-3"	6 3/8"	1V:1.88H	
W12 x 26	1/2"	5/8"	6 1/2"	1 1/2"	3 1/2"	1 1/8"	3"	1 1/2"	7"	1 1/8"	1'-3 1/2"	1'-5 3/4"	1"	680 ft.-lb.	90 ft.-lb.	5 3/4"	4'-4"	#10	12'-3"	9'-6"	8'-0"	6 3/8"	1V:1.88H	
W12 x 30	1/2"	5/8"	6 1/2"	1 1/2"	3 1/2"	1 1/4"	3"	1 1/2"	8"	1 1/4"	1'-3 1/2"	1'-6"	1 1/8"	840 ft.-lb.	100 ft.-lb.	5 3/4"	4'-8"	#11	13'-3"	10'-6"	8'-9"	5 3/8"	1V:2.23H	
W14 x 30	1/2"	5/8"	6 3/4"	1 1/2"	3 3/4"	1 1/4"	3"	1 1/2"	8"	1 1/4"	1'-5 1/2"	1'-8"	1 1/8"	840 ft.-lb.	100 ft.-lb.	5 3/4"	5'-0"	#11	13'-9"	10'-9"	9'-0"	5 1/2"	1V:2.18H	

Notes:
 1. See TM635 for placement of signs.
 2. See TM600 for Additional details and bolting procedures.



Accompanied by dwgs. TM220, TM600, TM635, TM675

The selection and use of this Standard Drawing, while designed in accordance with generally accepted engineering principles and practices, is the sole responsibility of the user and should not be used without first consulting a Registered Professional Engineer.

All materials shall be in accordance with the current Oregon Standard Specifications.	
OREGON STANDARD DRAWINGS	
MULTI-POST BREAKAWAY SIGN SUPPORTS DETAILS	
2021	
DATE	REVISION DESCRIPTION
CALC. BOOK NO. 1493	SDR DATE 06-JAN-2017
TM601	