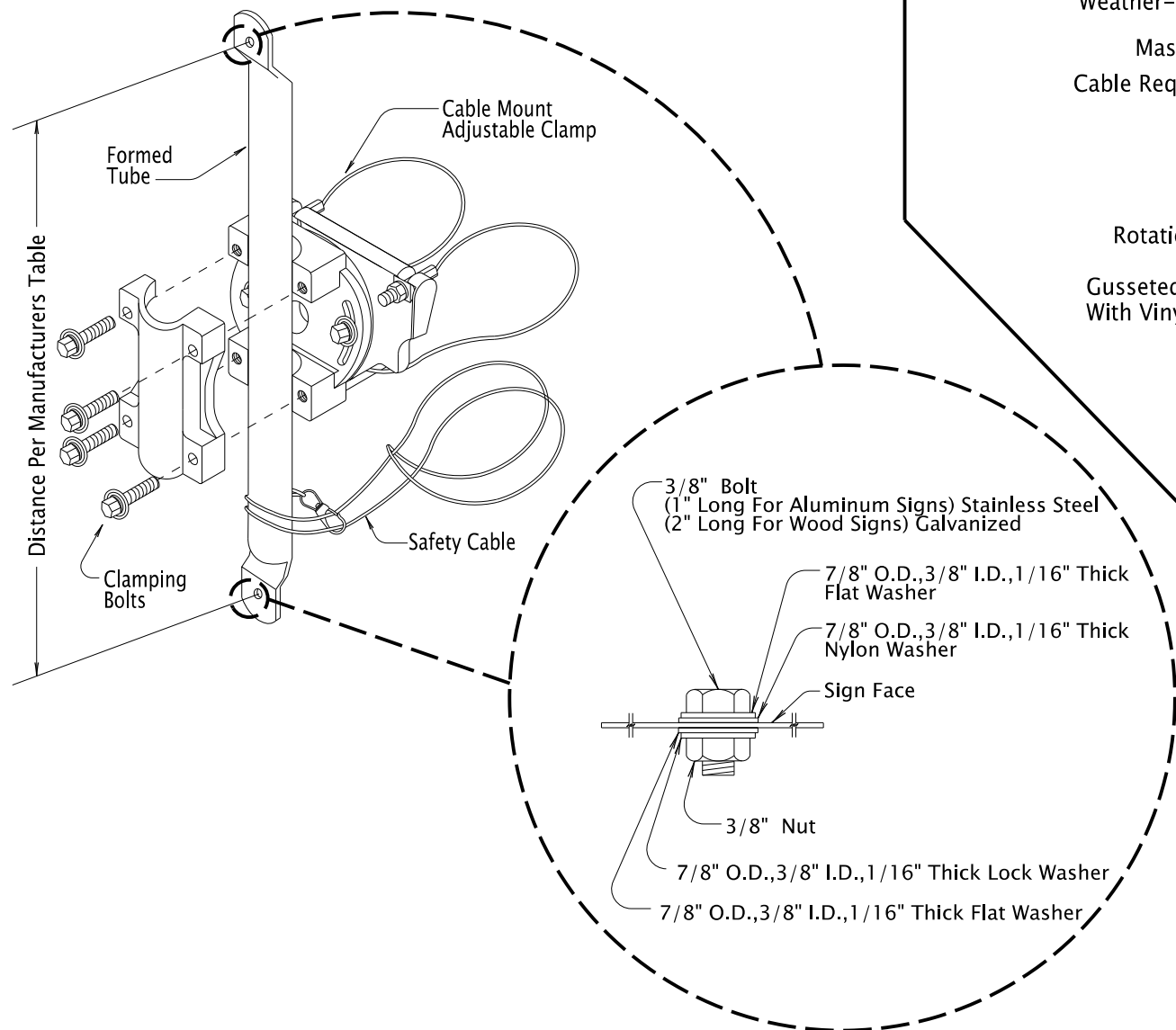
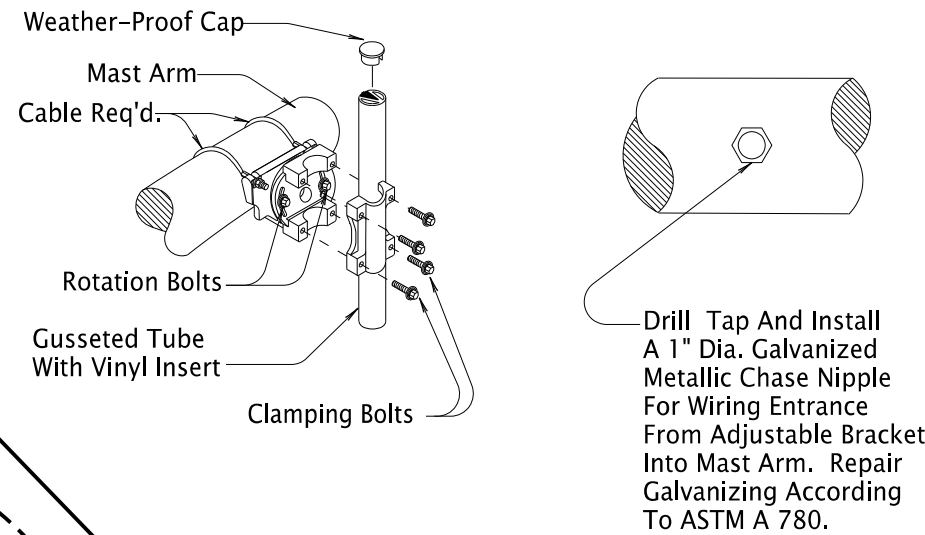


02-JUL-2020

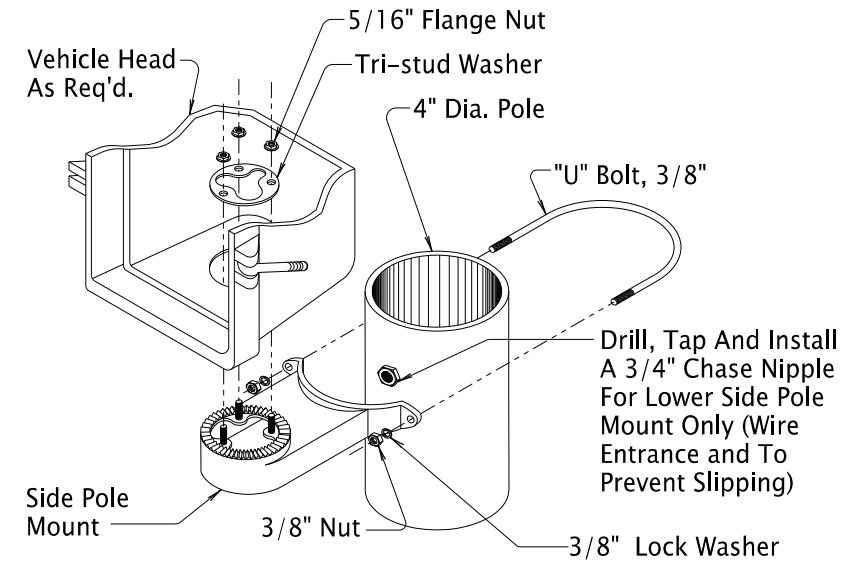
TM462.dgn



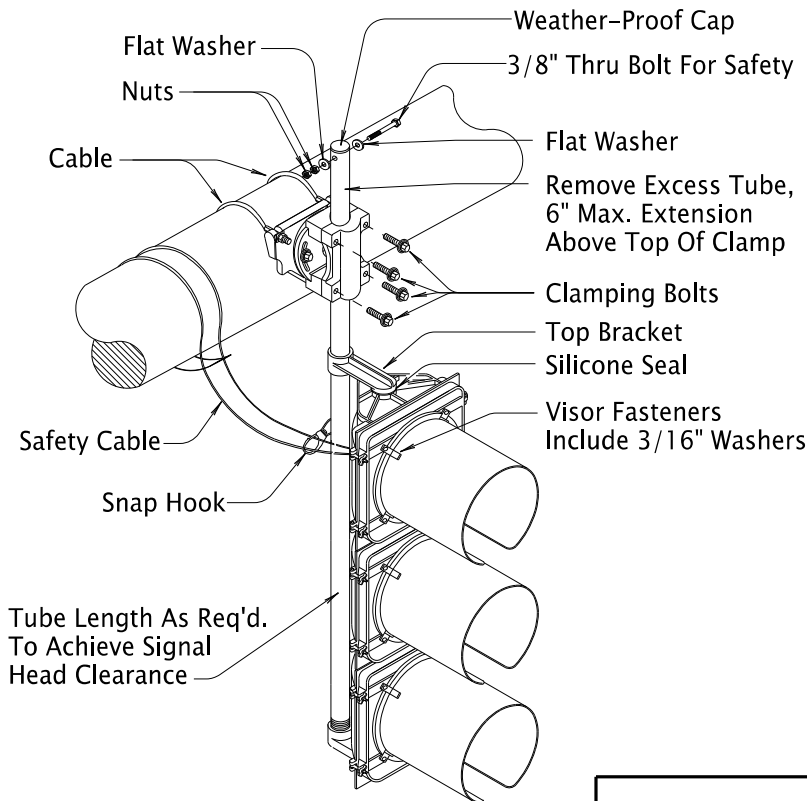
**SIGN BRACKET (TYPE "B", MAST ARM/POLE INSTALLATION)**



**VEHICLE SIGNAL MAST ARM INSTALLATION**

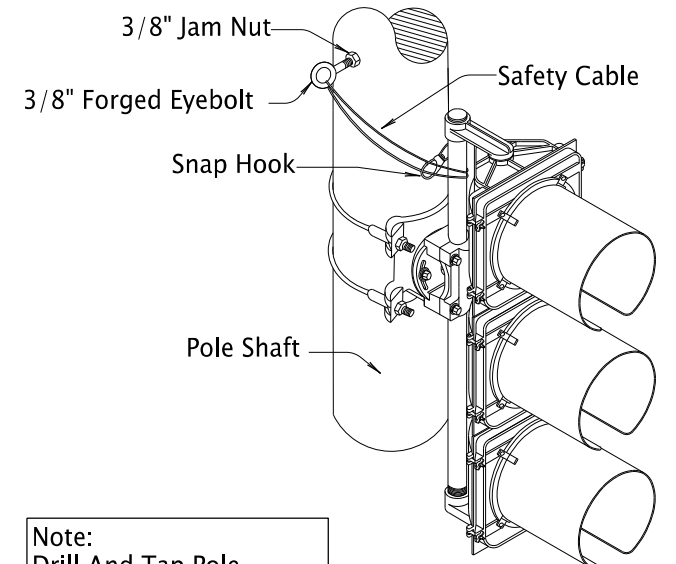


**4" SIDE POLE MOUNT INSTALLATION**  
(For Mounting Signal Heads to Vehicle Pedestals)



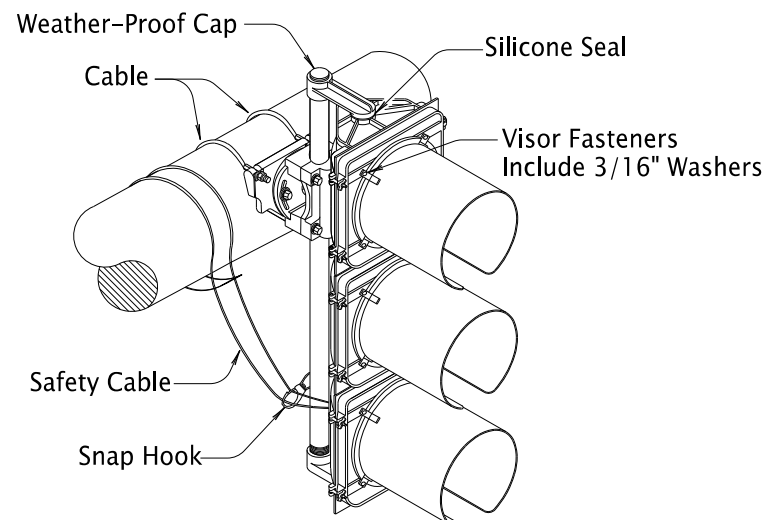
**NOTE:**  
This Detail Can Be Applied To Any Signal Head Configuration. If The Extension Between The Center Line Of The Mast Arm And The Top Bracket Exceeds 18" Consult Engineer For Guidance.

**MOUNTING VEHICLE SIGNAL ABOVE BRACKET ARMS**



**Note:**  
Drill And Tap Pole For 3/8" Forged Eye Bolt

**POLE SHAFT INSTALLATION**



**MOUNTING VEHICLE SIGNAL BETWEEN BRACKET ARMS**

General Notes:

1. All Screws, Bolts, Nuts And Washers Shall Be Type 304 Or 316 Stainless Steel Unless Noted Otherwise.
2. Bolts And Screws Shall Have Square Or Hex Heads. Allen Head Fasteners Not Allowed.
3. Follow Manufacturers Recommendations For Installation.

*The selection and use of this Standard Drawing, while designed in accordance with generally accepted engineering principles and practices, is the sole responsibility of the user and should not be used without first consulting a Registered Professional Engineer.*

All materials shall be in accordance with the current Oregon Standard Specifications.

**OREGON STANDARD DRAWINGS**  
**VEHICLE SIGNAL BRACKET & SIGN BRACKET (TYPE B) DETAILS**

2021

DATE	REVISION	DESCRIPTION

CALC. BOOK NO. --- N/A --- SDR DATE: 02-JUL-2020 **TM462**