

SAIF's legislative proposal

Improving access to timely and quality medical services for injured workers

Chip Terhune

President & CEO

Bryan Null

Industry Insights and Medical
Research Manager

Elaine Schooler

Assistant General Counsel

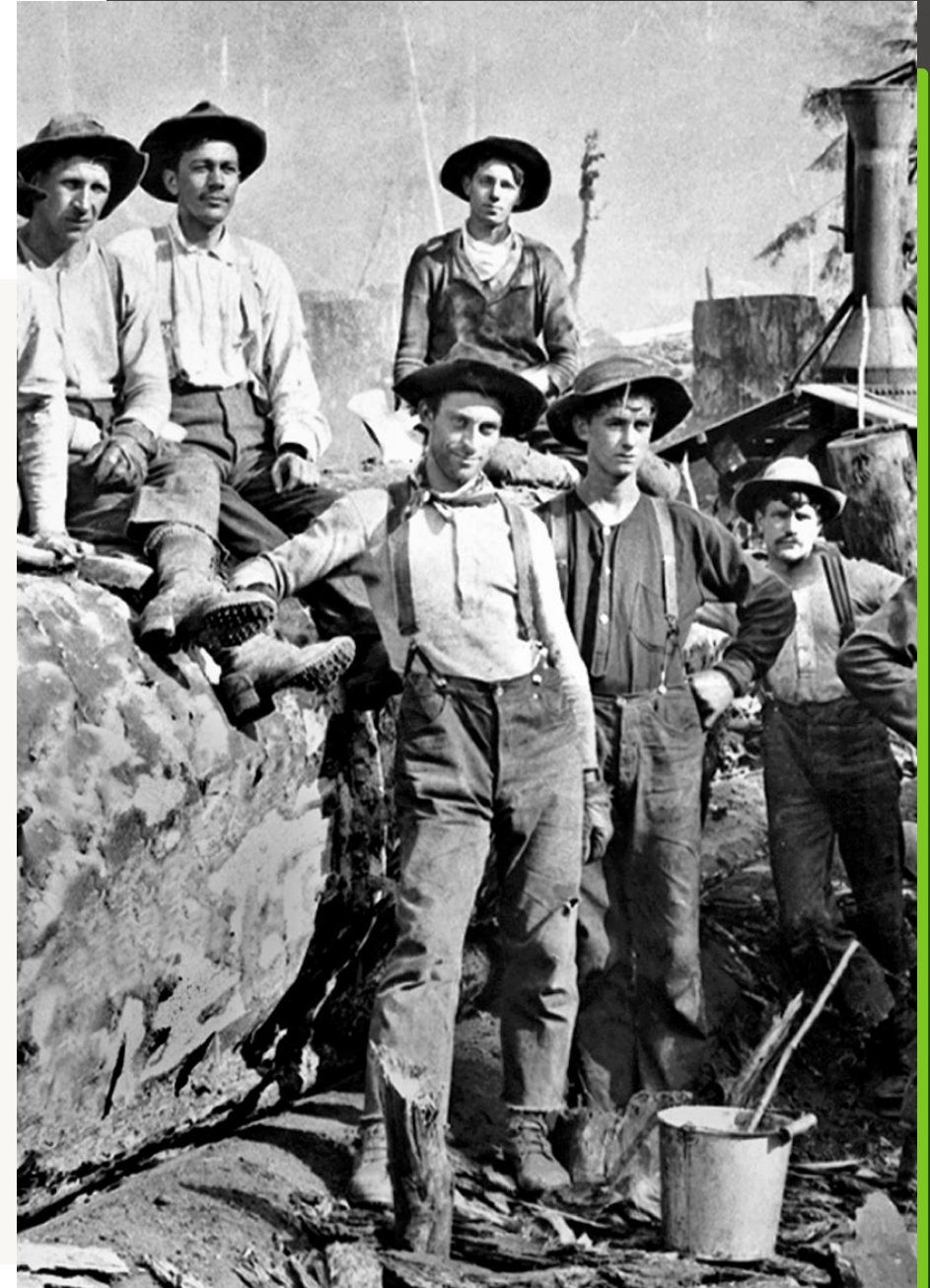
Ivo Trummer

Government Relations Director



SAIF's history in the marketplace

- Created in 1914 by the Oregon Legislature
- Today largest provider of workers' comp insurance in Oregon
 - 54,000 businesses (including construction, logging, agriculture, etc.)
 - 1,300 public entities
- Proudly provide benefits to injured workers who were injured in the 1940s
- Received 40,000 claims in 2023



Early warning signs

Is workers' comp at a pivot point?

- Access to care delays
- Rising medical costs



SAIF data on access to care issues and rising medical costs

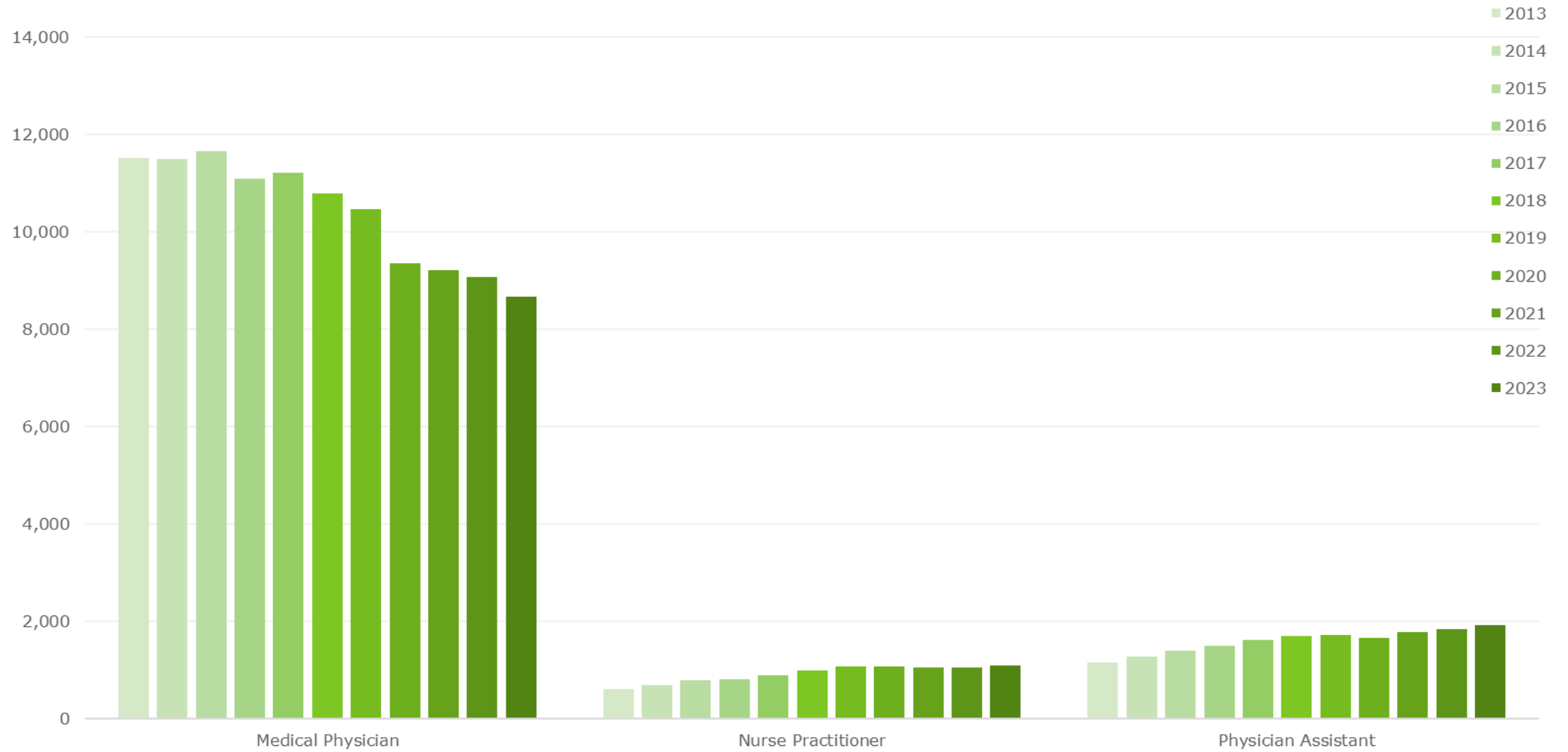
Improving access to timely and quality medical services for injured workers

Bryan Null

Industry Insights and Medical
Research Manager

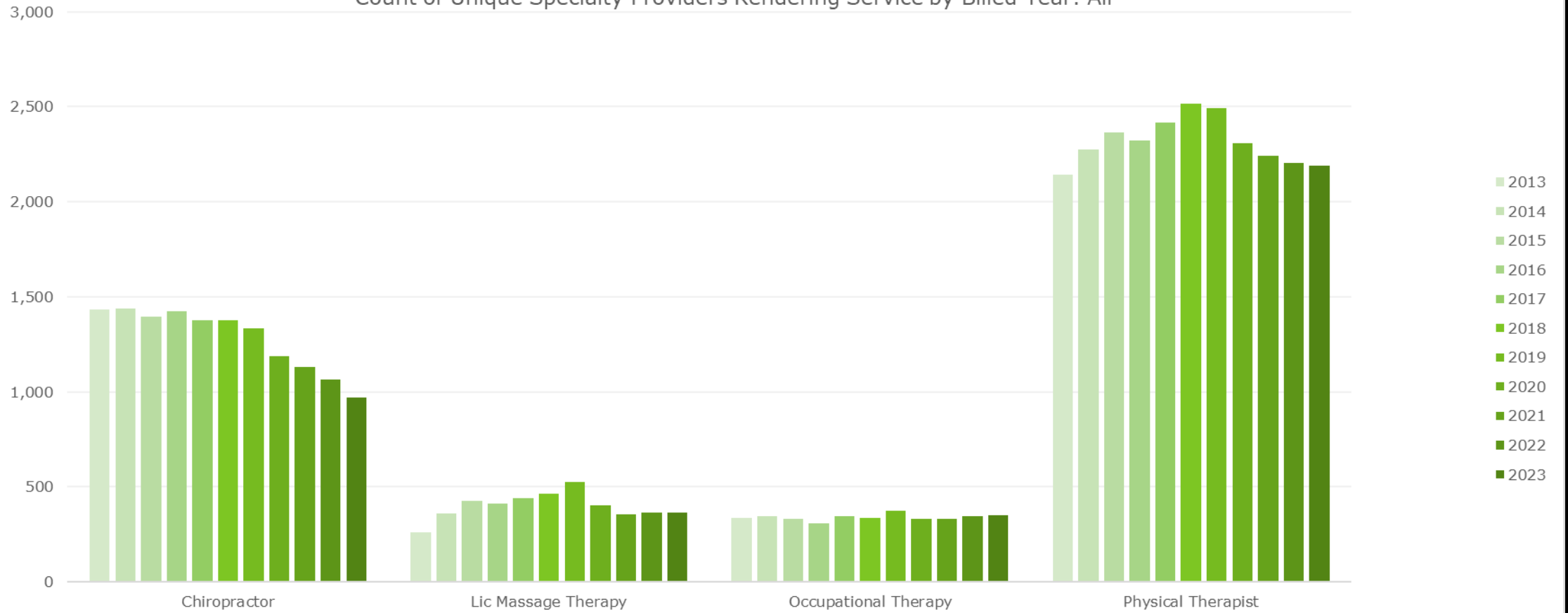


Count of Unique Providers Rendering Service by Billed Year: All Oregon



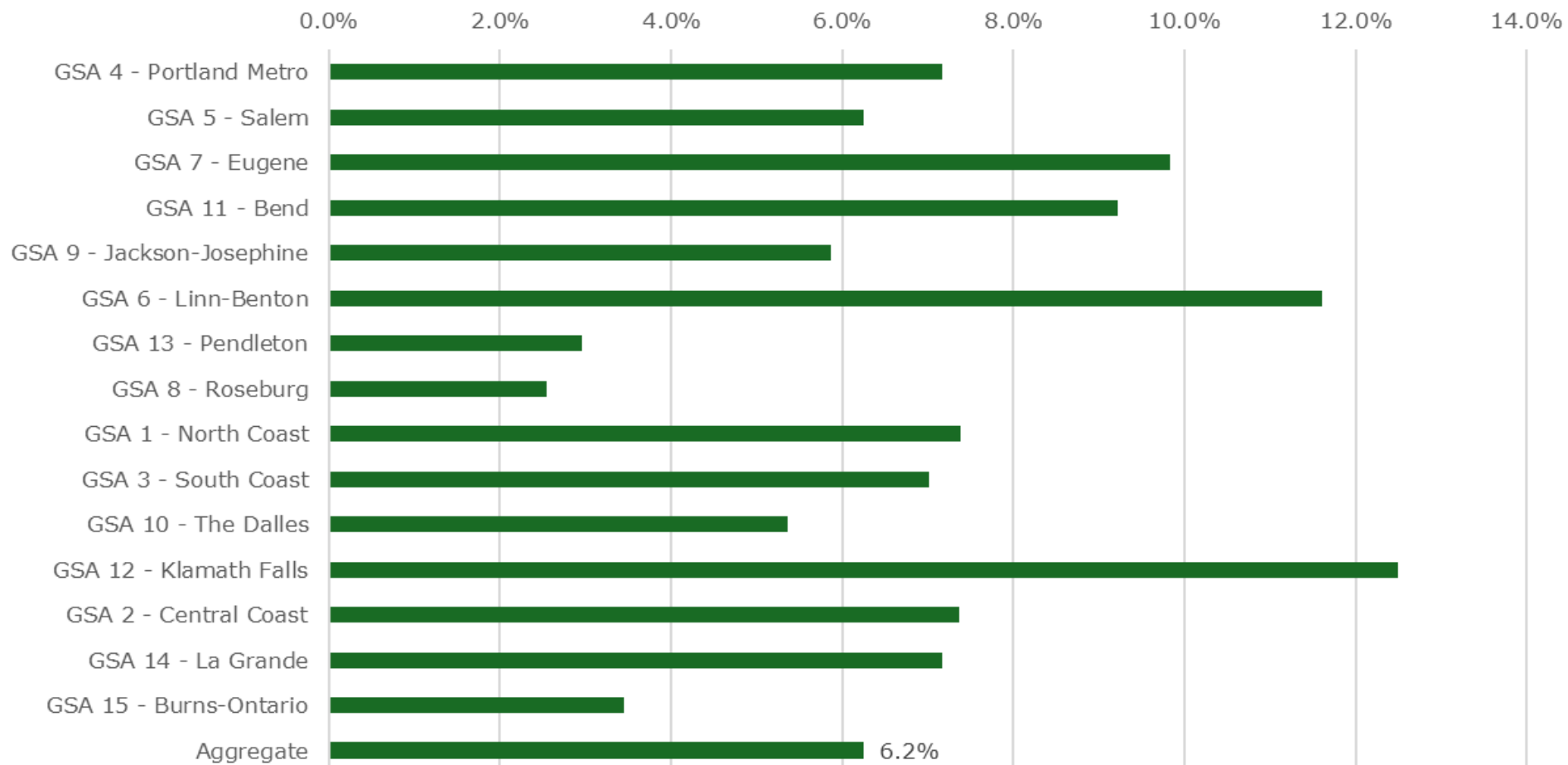
Providers Rendering Services by Provider Type and Billed Year

Count of Unique Specialty Providers Rendering Service by Billed Year: All



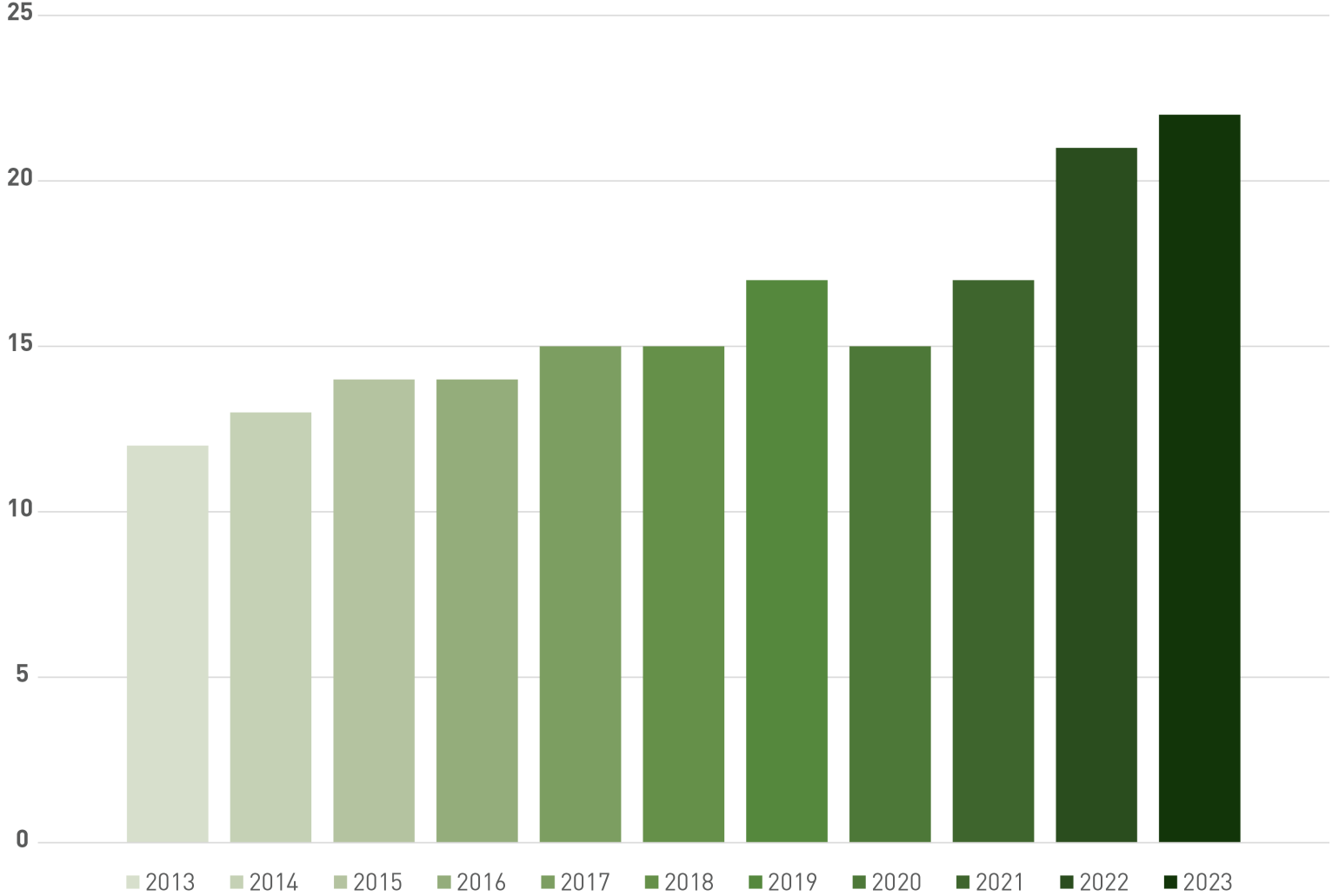
Providers Rendering Services by Provider Type and Billed Year

2013-2023 Annual Change in Days to first Physical Medicine Service



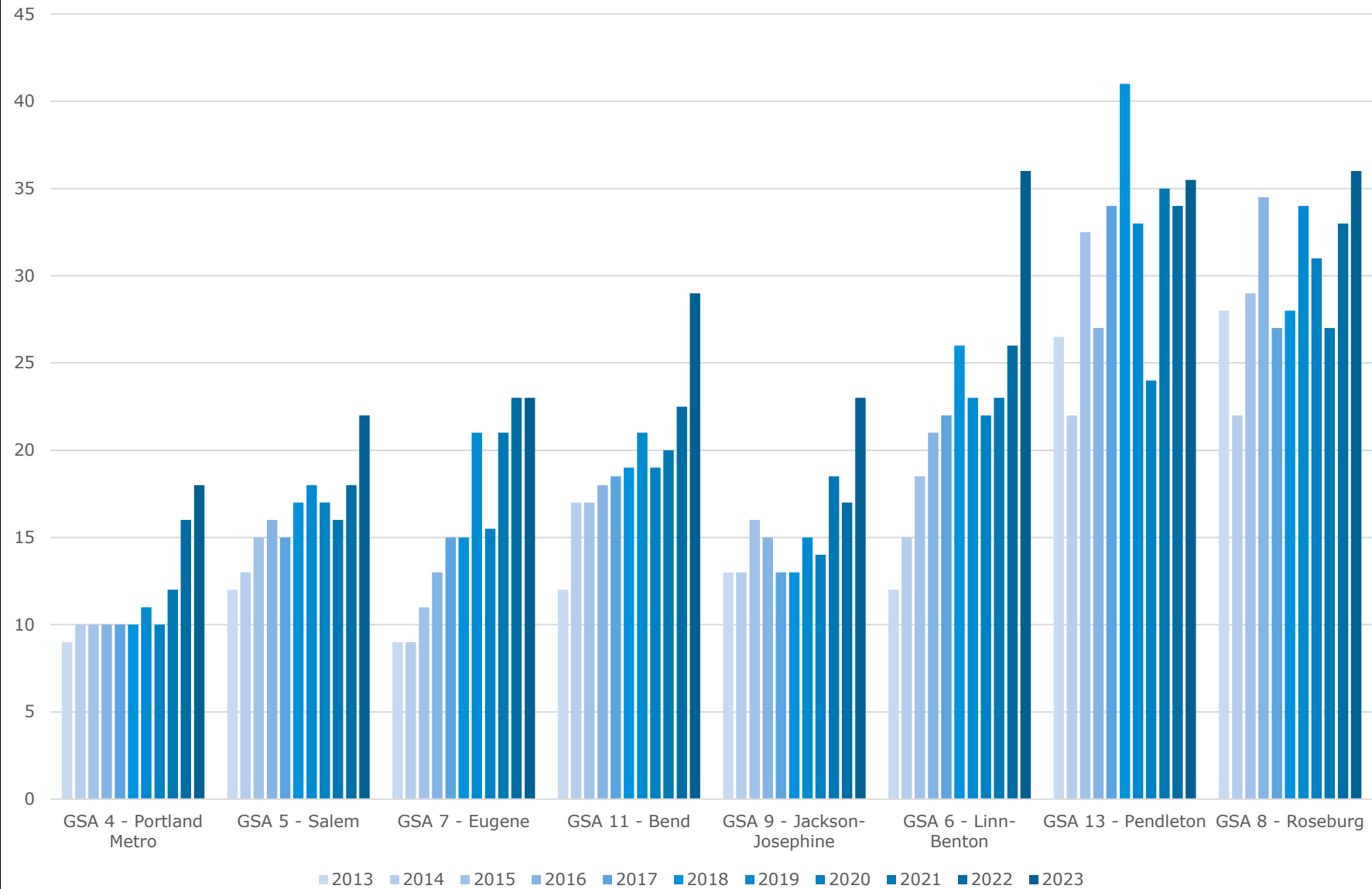
Region is based on injured worker's physical zip code

Median Days to First Physical Medicine Visit



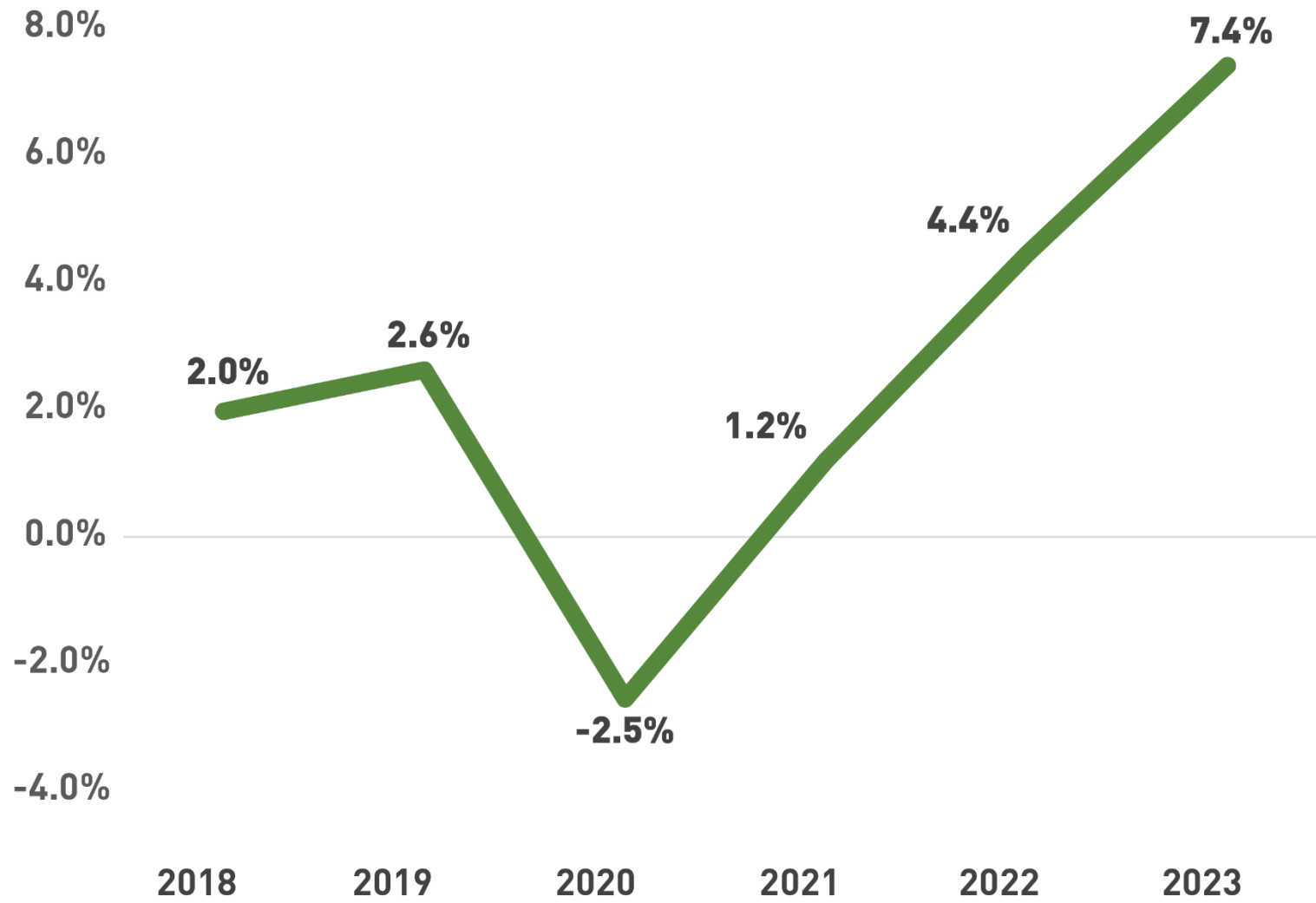
Aggregate

Median Days to First Physical Medicine Visit



Region is based on injured worker's physical zip code

Rising Medical costs



SAIF's legislative proposal

Improving access to timely and quality medical services for injured workers

Elaine Schooler
Assistant General Counsel

Ivo Trummer
Government Relations Manager



SAIF's legislative proposal

Gives SAIF the ability to explore innovative solutions

- Loan forgiveness to attract providers into workers' comp
- Recruit more providers and reduce administrative barriers
- Partner with, or create SAIF-owned, managed care organization
- Work toward greater data interoperability between workers' comp and larger health care system



SAIF's legislative proposal

- Give SAIF the ability to "solicit and coordinate with medical service providers" and "provide managed medical care services" to injured workers.
- Create statutory requirement for SAIF to have a "firewall"
 - Ensure sufficient separation between claims processing operations and the provision of managed care services to injured workers
 - Requires rulemaking by WCD
 - Requires annual compliance audit (with SAIF bearing the costs)
- Subsidiary, if any, with separate board of directors appointed by Governor

SAIF – Part of the solution

Chip Terhune
President & CEO





SAIF – Part of the solution

SAIF's mission is to serve Oregon's workers and employers by making workers' compensation widely available, affordable, and accessible, and by providing extraordinary service.

Questions?

Please contact:

Elaine Schooler, Assistant General Counsel, elasch@saif.com

Ivo Trummer, Government Relations Director, ivotru@saif.com

saif Work.
Life.
Oregon.