

Major Findings

Washington County's 8.8 percent poverty rate was among the lowest in the state. Even so, an estimated 45,023 people had incomes less than the federal poverty level. This represented an increase of 38 percent since 2000.

Unemployment in Washington County was also one of the lowest in the state at 4.3 percent in 2007, but still higher than the county's 2000 level.

Washington County's cost of living remained among the highest in the state. A two-parent family with three young children needed \$65,868 in annual income to pay for basic needs.

A single parent of a preschooler in Washington County needed to earn \$16.90 an hour to afford necessities such as housing, food, and quality child care. The typical nursing aide or retail clerk made about \$3.50 less than that.

	Washington County	Oregon	United States	
2007	Number in Poverty	45,023	474,189	38,052,247
	Percent in Poverty	8.8%	12.9%	13.0%
2000-2007	Percent change in Number in Poverty	38.2%	22.0%	12.2%
	Percent change in Population	17.3%	9.5%	7.2%
	Number of additional people in Poverty	+ 12,448	+ 85,449	+ 4,152,435
	Number of additional Population	+ 77,172	+ 326,056	+ 20,199,253

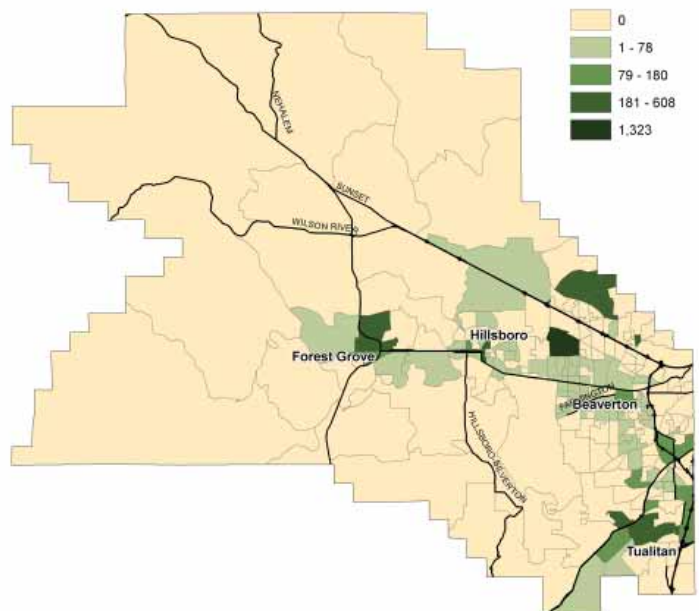
In 2000, 22 percent of students qualified for free- and reduced-price meals at public schools. By 2007, that proportion rose to one-third. Generally, students who qualify for this federal assistance live in families with incomes no more than 185 percent of the poverty level.

Community Action Agency

Community Action (CAO)
 1001 SW Baseline Street
 Hillsboro, OR 97123
 (503) 648-6646
 Fax (503) 648-4175
www.CommunityAction4u.org



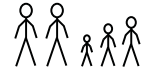
Affordable Housing Units by Census Block Group



Washington County

Basic Family Budget, an Alternative to the Federal Poverty Threshold

2007 Washington County's
Basic Family Budget



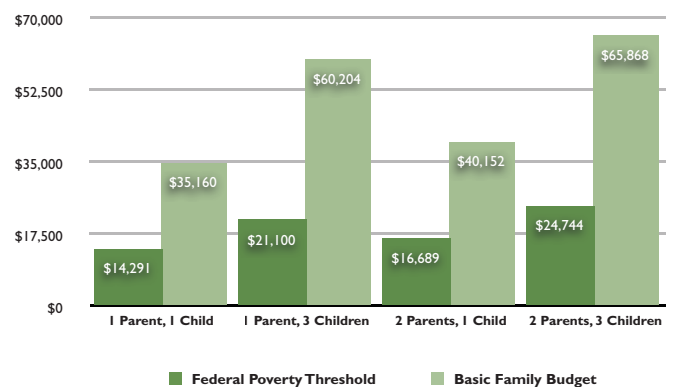
Householder(s)	1 Parent	1 Parent	2 Parents	2 Parents
Children	3-5 yr old	3-5 yr old, 6-8 yr old, and 9-11 yr old	3-5 yr old	3-5 yr old, 6-8 yr old, and 9-11 yr old
Housing	\$737	\$1,073	\$737	\$1,073
Food	\$316	\$615	\$512	\$774
Child Care	\$552	\$1,408	\$552	\$1,408
Transportation	\$318	\$318	\$447	\$447
Healthcare	\$230	\$295	\$325	\$393
Other Necessities	\$326	\$523	\$387	\$573
Taxes	\$451	\$785	\$386	\$821
Monthly Total	\$2,930	\$5,017	\$3,346	\$5,489
Annual Total	\$35,160	\$60,204	\$40,152	\$65,868
Hourly Wage needed for Basic Family Budget	\$16.90	\$28.94	\$9.65	\$15.83
Federal Poverty Threshold (FPT)	\$14,291	\$21,100	\$16,689	\$24,744
Percent of Basic Family Budget	40.6%	35.0%	41.6%	37.6%

Low-Income Needs

Community Action identified the following needs of Washington County's low-income population of:

- Emergency needs: food, shelter, heat, and utilities
- Healthcare, especially for uninsured pregnant women
- Housing stability
- Early childhood education: quality child care and early childhood development and support services
- Resource information

Basic Family Budget vs. Federal Poverty Threshold



Population and Economy

Washington County Employment	2007 Number of Positions	2006-2007 Change in Number of Positions	2007 Percent Gain in Positions	2007 Average Pay Per Position
Industries with the Largest Number of Employees, 2007				
Trade, Transportation, & Utilities	51,339	445	1%	\$50,234
Manufacturing	47,549	-416	-1%	\$75,788
Professional & Business Services	35,065	777	2%	\$43,755
Greatest Increase in the Number of Positions				
Education & Health Services	25,616	1297	5%	\$42,118
Leisure & Hospitality	20,245	820	4%	\$16,368
Local Government	17,865	780	5%	\$41,688
Greatest Decrease in the Number of Positions				
Manufacturing	47,549	-416	-1%	\$75,788
Financial Activities	14,479	-260	-2%	\$52,215

Population Change Since 2000

	2000-2007 % Growth	2000	2001	2002	2003	2004	2005	2006	2007
OREGON	9.0%	3,436,750	3,471,700	3,504,700	3,541,500	3,582,600	3,631,440	3,690,505	3,745,455
WASHINGTON	13.8%	449,250	455,800	463,050	472,600	480,200	489,785	500,585	511,075
Banks	9.5%	1,310	1,400	1,420	1,430	1,430	1,430	1,435	1,435
Beaverton	11.0%	77,050	77,170	77,990	79,010	79,350	83,095	84,270	85,560
Cornelius	11.6%	9,760	9,710	9,930	10,150	10,150	10,585	10,785	10,895
Durham	-0.4%	1,400	1,390	1,390	1,400	1,400	1,390	1,400	1,395
Forest Grove	16.5%	17,830	18,380	18,750	19,130	19,200	19,565	20,380	20,775
Gaston	8.3%	600	640	610	620	620	630	630	650
Hillsboro	23.6%	71,455	73,200	74,840	79,340	79,940	82,025	84,445	88,300
King City	38.8%	1,945	2,060	2,110	2,100	2,100	2,130	2,350	2,700
Lake Oswego (part)*	33.3%	15	15	17	20	20	20	20	20
North Plains	16.3%	1,625	1,660	1,660	1,640	1,650	1,700	1,755	1,890
Portland (part)*	8.6%	1,395	1,405	1,411	1,430	1,440	1,455	1,500	1,515
Rivergrove (part)*	0.0%	35	30	30	30	30	35	35	35
Sherwood	33.8%	12,230	12,840	13,680	14,050	14,190	14,940	16,115	16,365
Tigard	10.5%	42,260	43,040	44,070	45,130	44,650	45,500	46,300	46,715
Tualatin (part)*	12.7%	20,370	20,545	21,360	21,970	22,045	22,400	22,585	22,960
Wilsonville (part)*	9.6%	5	5	5	1,655	1,655	1,655	1,655	1,655
Unincorporated	9.6%	189,965	192,310	193,778	193,495	200,330	201,230	204,925	208,210

Washington County

2007 Community Action Agency Activities

Economic Assistance

prevented 478 evictions through emergency rental assistance

assistance with energy and utility bills provided to 8,308 households: 35 percent prevented shut offs, 7 percent restored service

provided emergency food boxes to 371 households

Affordable Housing

provided housing placement assistance to 125 families experiencing homelessness

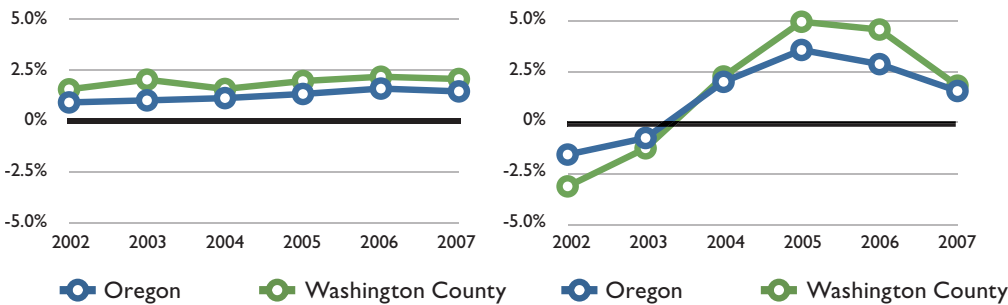
implemented Bridges to Housing program to create 15 units of permanent supportive housing

Healthcare

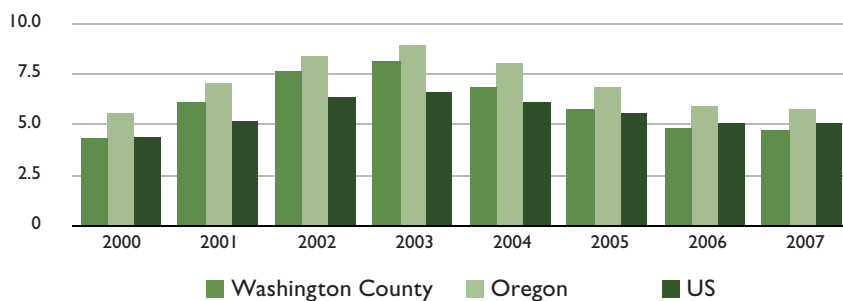
gave 608 low-income pregnant women access to prenatal care

provided comprehensive prenatal services to 52 of those 608 women, all of whom gave birth to babies at healthy birth weights despite multiple maternal risk factors

Population Change vs. Employment Change Since 2001



Unemployment Rates



Birth Rates

2002-2005, average Birth Rate per 1,000

Washington County

16

State of Oregon

13

2002-2005, average Teenage Birth Rate per 1,000 females ages 15-19

Washington County

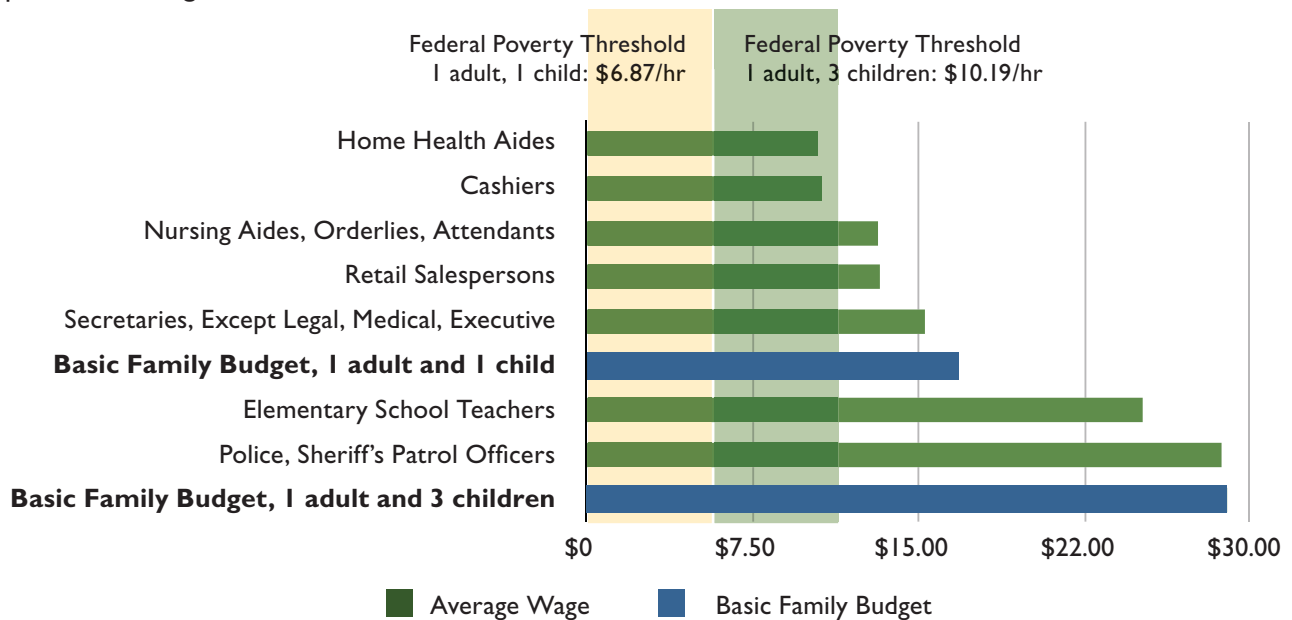
29

State of Oregon

34

Average Hourly Wages 2007

Occupational Earnings



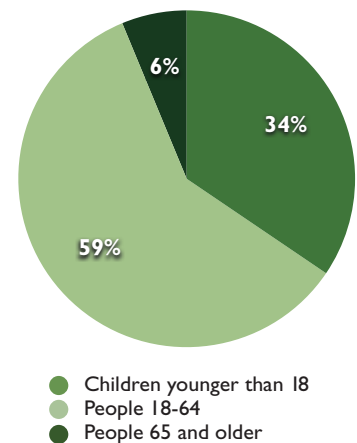
Poverty Population Characteristics

Poverty Rates by Age & Disability Status - 2007	% in Poverty	% of People in Poverty	% of all Population
Total Population	9%	-	-
Children younger than 18	12%	34%	26%
People 18-64	8%	59%	65%
People 65 and older	6%	6%	9%
People with a disability	16%	23%	12%

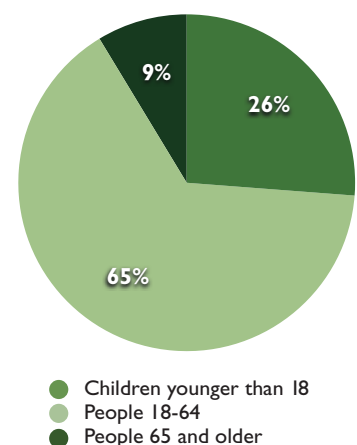
Poverty Rates by Family - 2007	% in Poverty	% of Families in Poverty	% of all Families
All Families	6%	-	-
Families with children under 18	9%	81%	55%
Single women with children under 18	31%	57%	11%

Poverty Rates by Race/Ethnicity - 2005-2007 avg.	% in Poverty	% of People in Poverty	% of all Population
Total Population	10%	-	-
White	9%	75%	79%
Black	16%	3%	2%
American Indian	17%	3%	1%
Asian	9%	8%	8%
Pacific Islander	39%	1%	0%
Other	12%	7%	6%
2 or more races	11%	4%	4%
Hispanic origin	21%	30%	14%

Poverty by Age – 2007



Population by Age – 2007



Washington County

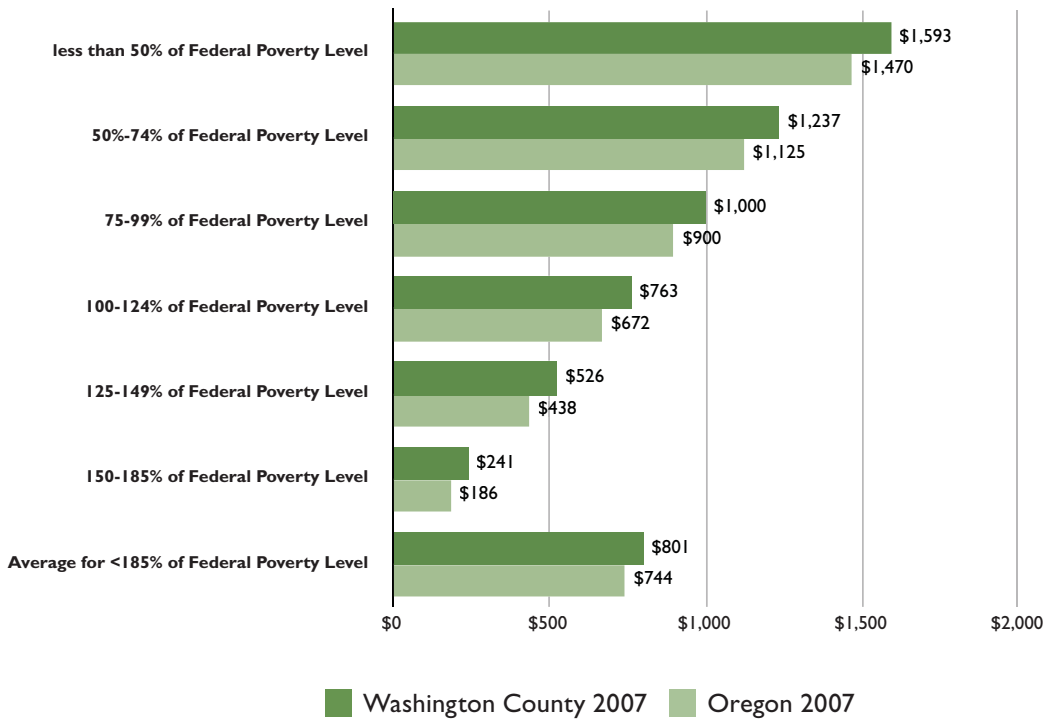
2007 Household Income

	Washington County	Oregon	United States
Median Household Income	\$61,628	\$48,730	\$50,740
Owner Median Household Income	\$81,007	\$61,690	\$63,059
Renter Median Household Income	\$37,705	\$30,186	\$30,915
Total Households	194,302	1,471,965	112,377,977
Renters percent income spent on housing	27%	29%	30%
Owners percent income spent on housing	23%	23%	22%
Extremely Low Income (30% of Median Household Income)	\$18,488	\$14,619	\$15,222
Households earning 0-30% Median Household Income	20,198	179,761	14,253,915
Burdened households earning 0-30% Median Household Income	17,874	149,621	11,355,585
% Burdened	88%	83%	80%
Very Low Income (50% of Median Household Income)	\$30,814	\$24,365	\$25,370
Households earning 31-50% Median Household Income	20,395	139,492	10,880,250
Burdened households earning 31-50% Median Household Income	14,558	96,863	7,043,215
% Burdened	71%	69%	65%
Low Income (80% of Median Household Income)	\$49,302	\$38,984	\$40,592
Households earning 51-80% Median Household Income	33,185	238,001	17,456,318
Burdened households earning 51-80% Median Household Income	13,940	122,962	8,364,889
% Burdened	42%	52%	48%
Workforce (120% of Median Household Income)	\$73,954	\$58,476	\$60,888
Households earning 81-120% Median Household Income	38,654	263,859	19,191,149
Burdened households earning 81-120% Median Household Income	11,299	85,103	5,823,144
% Burdened	29%	32%	30%

Note: Burden is defined as spending more than 30 percent of household income on gross housing costs (includes utilities).

Energy

Individual Household Energy Shortfall



Health Indicators

2006 Percent of Population without Health Insurance (by Region)

Washington County

15%

State of Oregon

16%

2007 Number of Primary Care Providers per 100,000

Washington County

109

State of Oregon

112

2006 Percentage of 2 year olds who are "adequately" immunized

Washington County

76%

State of Oregon

71%

2002-2005, average % of adults who consume at least 5 servings of fruits & vegetables per day

Washington County

30%

State of Oregon

26%

2002-2005, average Percent of Adults who Smoke Cigarettes

Washington County

15%

State of Oregon

20%



Hillsboro shelter provide a safe place to create.

Washington County

How We Help

Washington County Services	2000	2004	2005	2006	2007
New units created with OHCS funding resources	140	152	434	195	48
OHCS funding for affordable housing	\$7,012,360	\$784,327	\$1,877,544	\$4,460,754	\$4,169,322
Single Family Loans for low-income households-#	75	96	93	84	76
Single Family Loans for low-income households-\$	\$7,926,820	\$13,093,822	\$13,264,685	\$13,974,879	\$13,883,781
Households receiving energy assistance-#	4,360	6,649	6,903	6,734	7,028
Units weatherized-#	--	550	510	484	291
Units weatherized-\$**	--	\$986,885	\$970,017	\$933,075	\$866,321
Average per unit weatherized-\$**	--	\$1,794	\$1,902	\$1,928	\$2,977
Oregon Health Plan enrollment-%	7%	8%*	8%	7%	7%
Students eligible for free/reduced lunch-#	15,853	23,689	25,084	26,202	27,234
Students eligible free/reduced lunch-%	22%	30%	31%	32%	33%
Population receiving Food Stamps-%	--	10%	10%	9%	9%
Population receiving TANF-%	--	2%	2%	1%	1%

* indicates that data cannot be compared to previous years due to changes in data collection.

**Average is estimated from OHCS financial and database records

-- indicates data is not available.

Homelessness

One Night Overview

Washington County 2008 One Night Count	
Total Homeless Households	707
Total Homeless Population	1,145
<i>Total in Emergency Shelter</i>	108
<i>Total in Transitional Housing</i>	233
<i>Total Turnaway & Street Count</i>	804
Chronically Homeless Population	228
Unaccompanied Pregnant Youth	1
Households with Children	203
Stated Causes of Homelessness:**	
Unemployed	44%
Couldn't afford rent	42%
Drug/Alcohol (Self)	39%
Mental or Emotional disorder	30%
Evicted by landlord	20%
Criminal History	16%
Kicked out by family/friends	15%
Domestic Violence	13%
Poor Rental History	8%
Medical Problem	8%

**Respondents may give more than one reason

Risk Factors

2006-2007, school year
High School Dropout Rate

Washington
County
3%

State of
Oregon
4%

2005-2006, school year
Percent of 8th graders who
reported using illicit drugs in
the previous 30 days

Washington
County
13%

State of
Oregon
16%

2006
Criminal Offenses,
percent of population

Washington
County
7%

State of
Oregon
12%