

Major Findings

Unemployment in Douglas County remained high in 2007 at 7.8 percent. Since 2001, the county added 1,766 positions for 4.8 percent growth. Seven industries reported job losses in 2007. The third largest industry in 2006, Manufacturing, with average pay of nearly \$39,000 a year, lost 451 positions—more than any other industry. The county’s three largest industries all shed jobs in 2007.

The poverty rate remained higher than the state at 14.3 percent, up from 13.1 percent in 2000. Nearly two-thirds (63 percent) of single women with children lived below the federal poverty level. This kind of family represented half of all families in poverty in Douglas County. Nearly half (47 percent) of students lived in families with incomes low enough to qualify for federally supported free- or reduced-price meals.

	Douglas County	Oregon	United States	
2007	Number in Poverty	14,722	474,189	38,052,247
	Percent in Poverty	14.3%	12.9%	13.0%
2000-2007	Percent change in Number in Poverty	13.3%	22.0%	12.2%
	Percent change in Population	3.7%	9.5%	7.2%
	Number of additional people in Poverty	+ 1,723	+ 85,449	+ 4,152,435
	Number of additional Population	+ 3,720	+ 326,056	+ 20,199,253

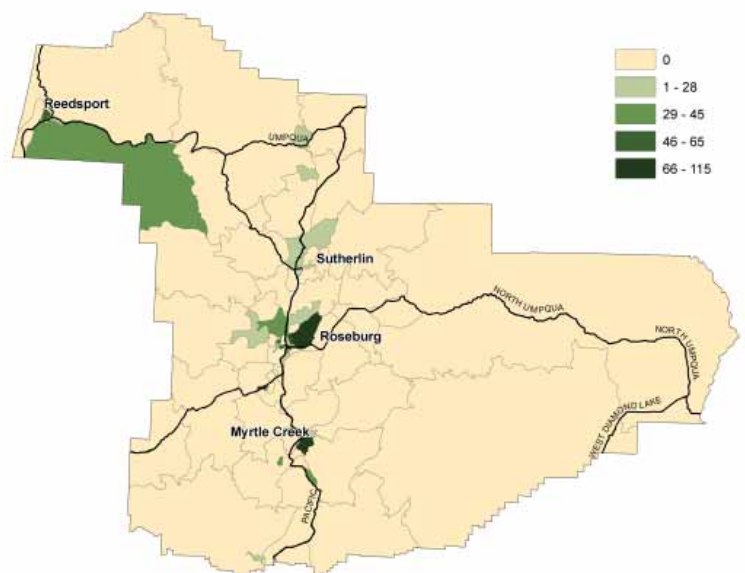
Housing and child care costs were low enough for a single parent with one child to afford necessities while earning \$12.50 an hour. That was less than the pay for a typical secretary or nurse’s aide, although more than the typical retail salesperson earned.

Community Action Agency

Umpqua Community Action Network (UCAN)
 280 Kenneth Ford Dr.
 Roseburg, OR 97470
 (541) 672-3421
 (800) 301-8226
 Fax (541) 672-1983
www.ucanap.org



Affordable Housing Units by Census Block Group



Douglas County

Basic Family Budget, an Alternative to the Federal Poverty Threshold

2007 Douglas County's
Basic Family Budget



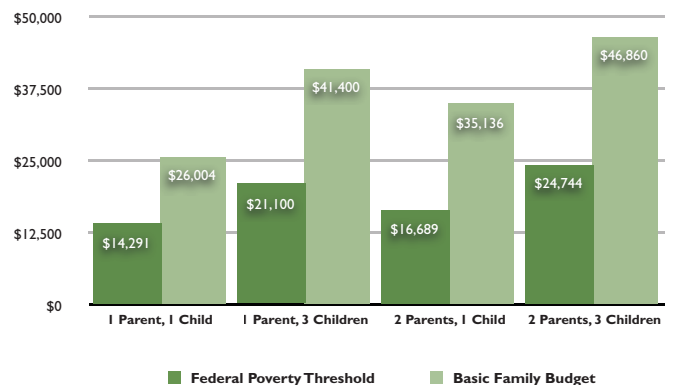
Householder(s)	1 Parent	1 Parent	2 Parents	2 Parents
Children	3-5 yr old	3-5 yr old, 6-8 yr old, and 9-11 yr old	3-5 yr old	3-5 yr old, 6-8 yr old, and 9-11 yr old
Housing	\$604	\$819	\$604	\$819
Food	\$316	\$615	\$512	\$774
Child Care	\$381	\$923	\$381	\$923
Transportation	\$390	\$390	\$524	\$524
Healthcare	\$247	\$308	\$359	\$424
Other Necessities	\$285	\$445	\$346	\$494
Taxes	-\$56	-\$50	\$202	-\$53
Monthly Total	\$2,167	\$3,450	\$2,928	\$3,905
Annual Total	\$26,004	\$41,400	\$35,136	\$46,860
Hourly Wage needed for Basic Family Budget	\$12.50	\$19.90	\$8.45	\$11.26
Federal Poverty Threshold (FPT)	\$14,291	\$21,100	\$16,689	\$24,744
Percent of Basic Family Budget	55.0%	51.0%	47.5%	52.8%

Low-Income Needs

Based on a 2007 community needs survey, Umpqua Community Action Network identified the following priorities:

- Access to education/job skills training
- Reliable public transportation system for all parts of the county
- Healthcare
- Food security
- Affordable housing; particularly rental assistance, utility assistance, and weatherization
- Affordable, sufficient and reliable child care
- Substance abuse treatment and prevention

Basic Family Budget vs. Federal Poverty Threshold



Population and Economy

Douglas County Employment	2007 Number of Positions	2006-2007 Change in Number of Positions	2007 Percent Gain in Positions	2007 Average Pay Per Position
Industries with the Largest Number of Employees, 2007				
Trade, Transportation, & Utilities	7,186	-162	-2%	\$27,404
Local Government	5,892	-17	-0%	\$32,153
Manufacturing	5,743	-451	-7%	\$38,990
Greatest Increase in the Number of Positions				
Professional & Business Services	3,005	109	4%	\$34,108
Federal Government	1,481	50	3%	\$63,205
Leisure & Hospitality	3,620	23	1%	\$13,204
Greatest Decrease in the Number of Positions				
Manufacturing	5,743	-451	-7%	\$38,990
Trade, Transportation, & Utilities	7,186	-162	-2%	\$27,404
Construction	1,914	-141	-7%	\$34,970
Natural Resources & Mining	1,424	-101	-7%	\$33,938

Population Change Since 2000

	2000-2007 % Growth	2000	2001	2002	2003	2004	2005	2006	2007
OREGON	9.0%	3,436,750	3,471,700	3,504,700	3,541,500	3,582,600	3,631,440	3,690,505	3,745,455
DOUGLAS	4.2%	100,500	101,200	101,300	101,800	102,350	102,905	103,815	104,675
Canyonville	26.6%	1,295	1,430	1,360	1,410	1,450	1,530	1,605	1,640
Drain	5.4%	1,020	1,030	1,050	1,060	1,040	1,045	1,065	1,075
Elkton	69.0%	145	180	150	150	150	197	205	245
Glendale	11.0%	860	860	840	860	870	915	940	955
Myrtle Creek	5.8%	3,430	3,410	3,460	3,480	3,490	3,535	3,590	3,630
Oakland	-1.6%	955	950	930	940	940	940	940	940
Reedsport	-1.5%	4,370	4,370	4,230	4,230	4,230	4,240	4,250	4,305
Riddle	2.5%	1,015	1,020	1,010	1,020	1,020	1,025	1,045	1,040
Roseburg	5.6%	20,125	20,200	20,170	20,480	20,530	20,790	21,050	21,255
Sutherlin	14.0%	6,720	6,990	7,180	7,300	7,360	7,500	7,610	7,660
Winston	24.6%	4,640	4,790	4,880	4,940	4,940	5,265	5,490	5,780
Yoncalla	5.2%	1,055	1,060	1,080	1,080	1,080	1,090	1,100	1,110
Unincorporated	0.3%	54,870	54,910	54,960	54,850	55,250	54,833	54,925	55,040

Douglas County

2007 Community Action Agency Activities

Education and Job Skills

offered educational and on-the-job training for women aged 17 to 60

Transportation

provided more than 13,600 rides with a team of 11 volunteer drivers

Healthcare

facilitated quarterly dental van visits, serving up to 10 clients each visit

Food Insecurity

served food boxes to a monthly average of 9,693 individuals
provided free- or reduced-price lunches to a daily average of 5,584 students during the school year and a total of 1,135 students during the summer

Affordable Housing

offered 71 rental units of affordable housing
provided self-sufficiency services to 81 families
provided short-term emergency rental assistance to 99 households facing eviction
served 350 individuals with case management, emergency assistance, transition programs, and mortgage default counseling

prevented 180 families from becoming homeless

offered showers and laundry facilities to homeless individuals and families

developed and built Mariposa Villa, a multi-family affordable housing project fitted with solar panels—reducing energy costs for residents and minimizing harm to the environment

Energy assistance and weatherization

provided emergency energy assistance to 4,114 households
arranged for 214 families to receive emergency firewood
installed 450 energy conservation kits for low-income households and distributed an additional 11,000 Compact Fluorescent Light bulbs

Child Care

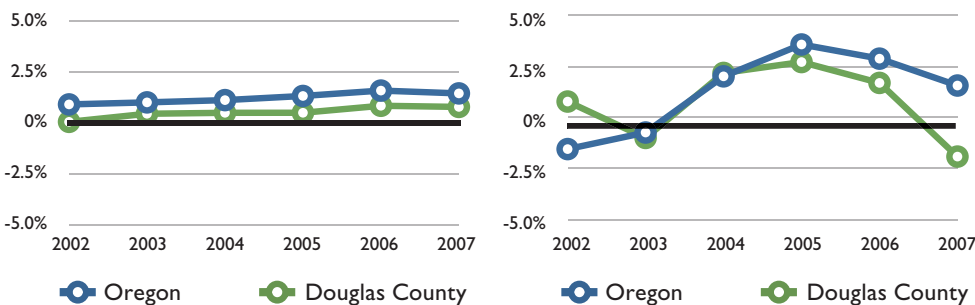
provided USDA child care food products to 90 daycare providers serving 1,100 children free meals

Substance Abuse

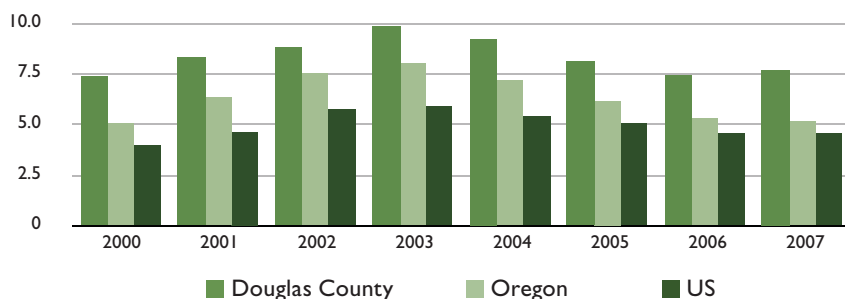
participated in the governor's Meth Task Force efforts to educate and inform the community about the county's methamphetamine epidemic

Confidence Clinic received a grant from the Commission on Children and Families to help women recovering from methamphetamine addiction

Population Change vs. Employment Change Since 2001



Unemployment Rates



Birth Rates

2002-2005, average Birth Rate per 1,000

Douglas County

11

State of Oregon

13

2002-2005, average Teenage Birth Rate per 1,000 females ages 15-19

Douglas County

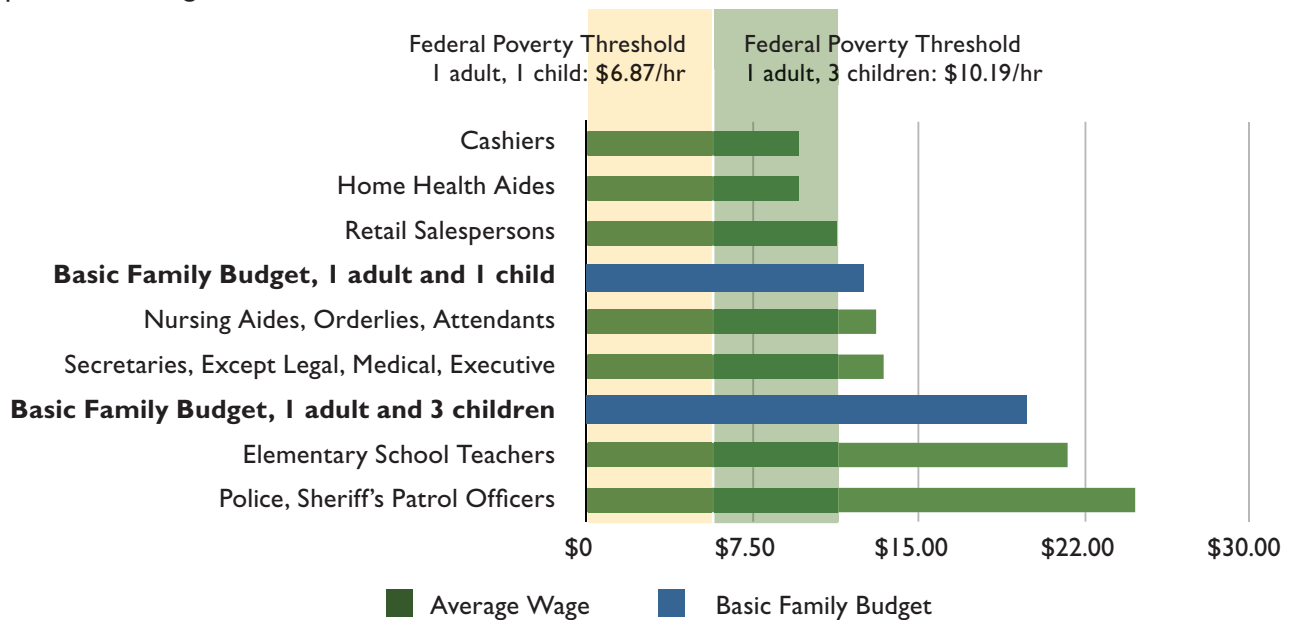
41

State of Oregon

34

Average Hourly Wages 2007

Occupational Earnings



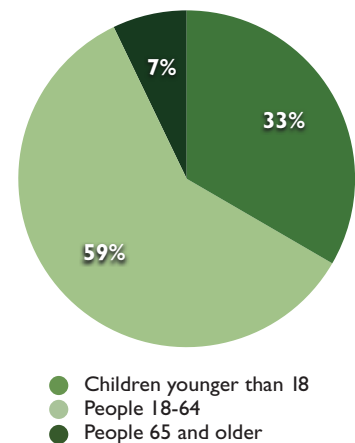
Poverty Population Characteristics

Poverty Rates by Age & Disability Status - 2007	% in Poverty	% of People in Poverty	% of all Population
Total Population	14%	-	-
Children younger than 18	23%	33%	20%
People 18-64	14%	59%	60%
People 65 and older	5%	7%	19%
People with a disability	24%	44%	25%

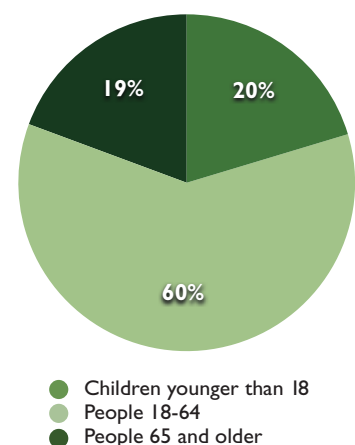
Poverty Rates by Family - 2007	% in Poverty	% of Families in Poverty	% of all Families
All Families	11%	-	-
Families with children under 18	22%	80%	41%
Single women with children under 18	63%	54%	10%

Poverty Rates by Race/Ethnicity - 2005-2007 avg	% in Poverty	% of People in Poverty	% of all Population
Total Population	14%	-	-
White	13%	91%	93%
Black	--	--	0%
American Indian	23%	2%	1%
Asian	24%	2%	1%
Pacific Islander	--	--	0%
Other	--	--	2%
2 or more races	15%	3%	3%
Hispanic origin	18%	5%	4%

Poverty by Age – 2007



Population by Age – 2007



-- indicates data was suppressed due to confidentiality.

Douglas County

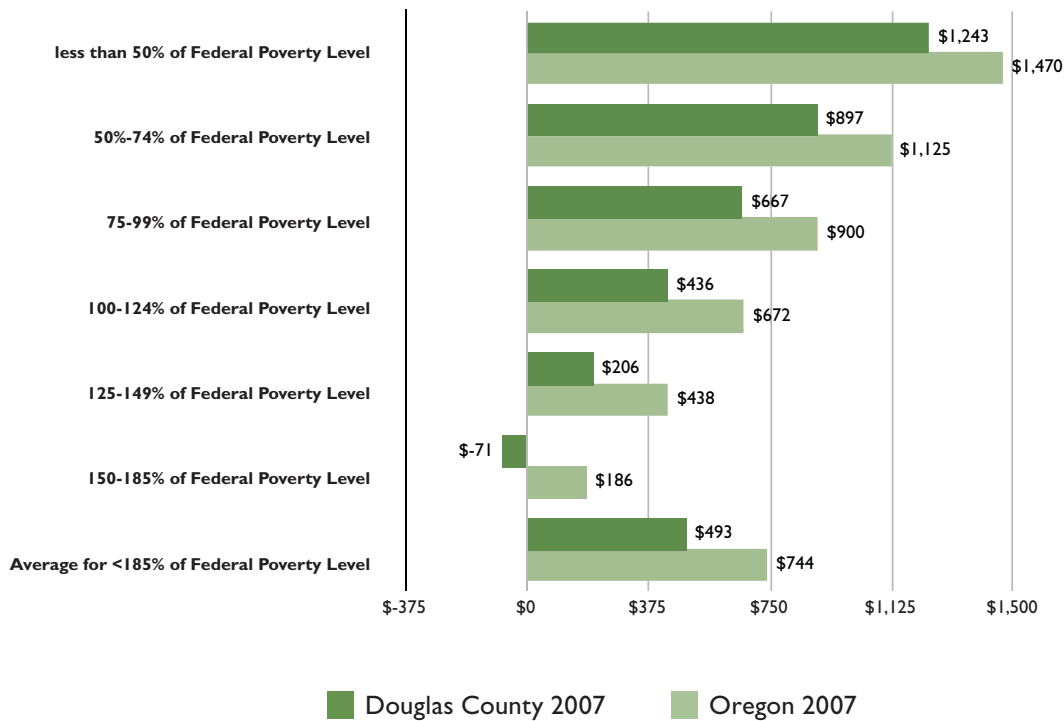
2007 Household Income

	Douglas County	Oregon	United States
Median Household Income	\$38,841	\$48,730	\$50,740
Owner Median Household Income	\$45,951	\$61,690	\$63,059
Renter Median Household Income	\$28,951	\$30,186	\$30,915
Total Households	41,824	1,471,965	112,377,977
Renters percent income spent on housing	30%	29%	30%
Owners percent income spent on housing	19%	23%	22%
Extremely Low Income (30% of Median Household Income)	\$11,652	\$14,619	\$15,222
Households earning 0-30% Median Household Income	4,564	179,761	14,253,915
Burdened households earning 0-30% Median Household Income	3,397	149,621	11,355,585
% Burdened	74%	83%	80%
Very Low Income (50% of Median Household Income)	\$19,421	\$24,365	\$25,370
Households earning 31-50% Median Household Income	3,043	139,492	10,880,250
Burdened households earning 31-50% Median Household Income	2,265	96,863	7,043,215
% Burdened	74%	69%	65%
Low Income (80% of Median Household Income)	\$31,073	\$38,984	\$40,592
Households earning 51-80% Median Household Income	7,091	238,001	17,456,318
Burdened households earning 51-80% Median Household Income	3,401	122,962	8,364,889
% Burdened	48%	52%	48%
Workforce (120% of Median Household Income)	\$46,609	\$58,476	\$60,888
Households earning 81-120% Median Household Income	8,402	263,859	19,191,149
Burdened households earning 81-120% Median Household Income	2,863	85,103	5,823,144
% Burdened	34%	32%	30%

Note: Burden is defined as spending more than 30 percent of household income on gross housing costs (includes utilities).

Energy

Individual Household Energy Shortfall



Health Indicators

2006 Percent of Population without Health Insurance (by Region)

Douglas County	State of Oregon
16%	16%

2007 Number of Primary Care Providers per 100,000

Douglas County	State of Oregon
92	112

2006 Percentage of 2 year olds who are "adequately" immunized

Douglas County	State of Oregon
73%	71%

2002-2005, average % of adults who consume at least 5 servings of fruits & vegetables per day

Douglas County	State of Oregon
20%	26%

2002-2005, average Percent of Adults who Smoke Cigarettes

Douglas County	State of Oregon
27%	20%



Residents of Grandview – which provides permanent supportive housing for families affected by mental illness – take part in UCAN's summer program.

Douglas County

How We Help

Douglas County Services	2000	2004	2005	2006	2007
New units created with OHCS funding resources	30	0	110	40	81
OHCS funding for affordable housing	\$1,424,816	\$0	\$2,928,073	\$4,893,470	\$3,797,184
Single Family Loans for low-income households-#	26	15	15	7	16
Single Family Loans for low-income households-\$	\$2,043,578	\$1,502,267	\$1,656,700	\$842,479	\$1,966,394
Households receiving energy assistance-#	3,395	2,851	2,959	2,832	2,661
Units weatherized-#	--	61	28	46	71
Units weatherized-\$	--	\$110,707	\$77,073	\$157,406	\$183,231
Average per unit weatherized-\$	--	\$1,815	\$2,753	\$3,422	\$2,581
Oregon Health Plan enrollment-%	14%	15%*	14%	13%	13%
Students eligible for free/reduced lunch-#	7,299	7,471	7,786	7,130	7,243
Students eligible free/reduced lunch-%	44%	47%	48%	46%	47%
Population receiving Food Stamps-%	--	23%	23%	23%	23%
Population receiving TANF-%	--	4%	4%	4%	4%

* indicates that data cannot be compared to previous years due to changes in data collection.
 -- indicates data is not available.

Homelessness

One Night Overview

Douglas County 2008 One Night Count	
Total Homeless Households	300
Total Homeless Population	501
<i>Total in Emergency Shelter</i>	58
<i>Total in Transitional Housing</i>	244
<i>Total Turnaway & Street Count</i>	199
Chronically Homeless Population	81
Unaccompanied Pregnant Youth	2
Households with Children	85
Stated Causes of Homelessness:**	
Couldn't afford rent	37%
Drug/Alcohol (Self)	31%
Credit	26%
Unemployed	25%
Poor Rental History	24%
Kicked out by family/friends	16%
Mental or Emotional disorder	16%
Criminal History	14%
Evicted by landlord	13%
By Choice	12%

**Respondents may give more than one reason

Risk Factors

2006-2007, school year
High School Dropout Rate

Douglas
County
3%

State of
Oregon
4%

2005-2006, school year
Percent of 8th graders who
reported using illicit drugs in
the previous 30 days

Douglas
County
4%

State of
Oregon
16%

2006
Criminal Offenses,
percent of population

Douglas
County
13%

State of
Oregon
12%