

# UNEMPLOYMENT INSURANCE STATISTICS

State of Oregon  
EMPLOYMENT DEPARTMENT

UI Programs

Janet Orton

(503) 947-1679

janet.l.orton@state.or.us

www.WorkingInOregon.org

LABOR FORCE DATA		This Month	Last Month	Last Year
		Oct 2009	Sep 2009	Oct 2008
Oregon Civilian Labor Force		1,959,561	1,958,482	1,976,552
Total Number Unemployed		210,325	207,856	135,071

UNEMPLOYMENT RATES (CIVILIAN) (%)		Labor Force & Rate Data: <a href="http://www.QualityInfo.org">www.QualityInfo.org</a>		
Total Unemployment:	Oregon	10.7	10.6	6.8
	National	9.5	9.6	6.0
Seasonally Adjusted:	Oregon	11.3	11.3	7.2
	National	10.2	9.8	6.5

Week # :	45
Ending:	November 14, 2009

	THIS WEEK		LAST WEEK		This Month	Last Month	Last Year
	2009	2008	2009	2008	Oct 2009	Sep 2009	Oct 2008
<b>UNEMPLOYMENT RATES (%)</b>							
Insured Unemployment: Oregon	5.54	3.72	5.54	3.72	5.39	5.42	3.04
EB Trigger	5.55	3.31	5.60	3.25			
Adjusted Insured Unemployment	8.00	4.19	8.19	4.12			
National Average TUR <sup>1</sup>	11.80	6.30	11.80	6.30			
<b>REGULAR CLAIMS (UI, UCFE, UCX)</b>					<b>Oct 2009</b>	<b>Sep 2009</b>	<b>Oct 2008</b>
<b>Initial Claims (Excl. Liable)<sup>2</sup></b>	<b>11,854</b>	<b>13,423</b>	<b>12,395</b>	<b>10,649</b>	<b>54,514</b>	<b>37,289</b>	<b>44,245</b>
Oregon - New	5,112	6,820	5,198	5,511	21,071	14,642	23,628
Additional	6,161	6,240	6,671	4,754	30,771	20,657	18,862
Interstate - Agent	581	363	526	384	2,672	1,990	1,755
Interstate - Liable	319	270	318	279	1,564	1,077	1,164
<b>Weeks Claimed (Excl. Liable)<sup>2</sup></b>	<b>92,052</b>	<b>66,673</b>	<b>91,933</b>	<b>63,579</b>	<b>444,245</b>	<b>370,468</b>	<b>245,520</b>
Oregon	87,627	64,104	87,297	60,987	421,207	352,817	234,056
Interstate - Agent	4,425	2,569	4,636	2,592	23,038	17,651	11,464
Interstate - Liable	3,292	2,137	3,277	2,046	15,435	12,512	8,049
<b>New Combined Wage Claims</b>	<b>173</b>	<b>226</b>	<b>201</b>	<b>235</b>	<b>791</b>	<b>624</b>	<b>856</b>
<b>Non-monetary Determinations &amp; Redeter.</b>	<b>3,230</b>	<b>2,874</b>	<b>2,991</b>	<b>2,778</b>	<b>13,018</b>	<b>10,955</b>	<b>12,324</b>
<b>PAYMENTS: REGULAR BENEFITS</b>							
First Payments	4,314	4,466	4,464	4,182	18,040	13,348	16,064
Checks Issued	86,096	60,998	86,813	57,624	415,643	350,585	221,529
Gross Amount of Payments (\$) <sup>2,4</sup>	26,421,233	17,273,498	26,569,430	16,314,928	129,359,221	109,622,874	62,949,664
Regular Benefit Payments (\$)	24,398,533	17,273,498	24,547,994	16,314,928	119,612,446	101,395,574	62,949,664
Regular Federal Additional Compensation (\$) <sup>3</sup>	2,022,700	0	2,021,436	0	9,746,775	8,227,300	0
Average Check Amount (\$) <sup>2,4</sup>	<b>306.88</b>	<b>283.18</b>	<b>306.05</b>	<b>283.13</b>	<b>311.23</b>	<b>312.69</b>	<b>284.16</b>
Number Exhausting Benefits	2,804	1,286	2,742	1,197	14,756	12,045	4,874
<b>TRUST FUND</b>							
Balance (in Millions) (\$)	\$ 1,217.90	\$ 2,076.71	\$ 1,239.61	\$ 2,067.71	\$ 1,190.98	\$ 1,268.70	\$ 2,067.71

<sup>1</sup> NTUR: Unemployment Compensation Amendment of 1992 specifies that a 2 month average NTUR be used to determine duration levels.

<sup>2</sup> Excludes WORKSHARE program

<sup>3</sup> Federal Additional Compensation program start 3/2/2009 - Adds and additional \$25 to all claims

<sup>4</sup> Includes FAC Payments

For current and historic UI reports, visit:

<http://www.oregon.gov/EMPLOY/BUDGET/UI/index.shtml>

<b>Week # :</b>	<b>45</b>
<b>Ending:</b>	<b>November 14, 2009</b>

	<b>This Week</b>	<b>Last Week</b>	<b>Cumulative</b>
<b>EXTENDED BENEFITS (EB)</b>	YTD		
Initial Claims (Excl. Liable)	317	834	25,404
Weeks Claimed (Excl. Liable)	10,463	11,149	272,641
Gross Amount of Payments (\$) <sup>4</sup>	3,674,022	3,749,860	94,311,266
EB Benefit Payments (\$)	3,397,947	3,465,810	87,062,366
EB Federal Additional Compensation (\$) <sup>3</sup>	276,075	284,050	7,248,900
Number Exhausting Benefits	456	451	8,572

Oregon HEB Trigger "ON" 02/15/2009.

For a list of states ON EB, visit:

[http://www.workforcesecurity.doleta.gov/unemploy/claims\\_arch.asp](http://www.workforcesecurity.doleta.gov/unemploy/claims_arch.asp)

<b>Misc Additional Benefits (AB)</b>			
Initial Claims (Excl. Liable)	0	3	112
Weeks Claimed (Excl. Liable)	62	43	1,875
Gross Amount of Payments (\$)	0	0	0
Number Exhausting Benefits	0	0	0

<b>TRADE ADJUSTMENT ACT (TRA)</b>			
Training Plans	1	3	1,914
Initial Claims	197	106	4,382
Weeks Claimed	2	3	1,631
Gross Amount of TRA Payments (\$) <sup>4</sup>	588	856	619,835
TRA Benefit Payments (\$)	538	781	584,835
TRA Federal Additional Compensation (\$) <sup>3</sup>	50	75	35,000
Certifications	2	3	49
Gross Amount of TAA Payments (\$)	4,124	791	79,414

<b>WORKSHARE PROGRAM (WS)</b>			
Initial Claims	348	597	17,209
Weeks Claimed	4,376	5,020	426
Gross Amount of Payments (\$) <sup>4</sup>	523,718	613,782	23,833,098
WS Benefit Payments (\$)	424,493	499,632	19,786,649
WS Federal Additional Compensation (\$)	99,225	114,150	4,046,449

<b>TRAINING UI (TUI)</b>			
Applications Accepted	348	347	7,846
Approved	311	308	6,993
Weeks Claimed	4,141	3,954	92,839
Gross Amount of Payments (\$) <sup>4</sup>	1,507,095	1,447,713	33,135,518
TUI Benefit Payments (\$)	1,401,845	1,347,713	31,043,103
TUI Federal Additional Compensation (\$)	105,250	100,000	2,092,415

<b>SUPPLEMENTAL UI for DISLOCATED WORKERS (SUD)</b>			
Initial Claims	15	10	153
Weeks Claimed	124	115	749
Gross Amount of Payments (\$)	43,058	37,212	265,200

<sup>3</sup> Federal Additional Compensation program start 3/2/2009 - Adds and additional \$25 to all claims

<sup>4</sup> Includes FAC Payments

For current and historic UI reports, visit:

<http://www.oregon.gov/EMPLOY/BUDGET/UI/index.shtml>

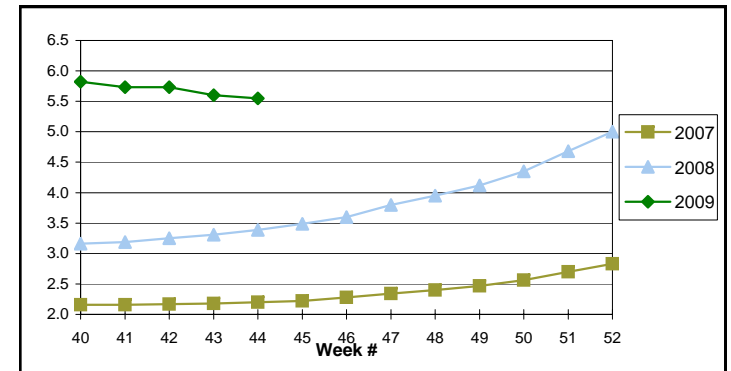


(503) 947-1679

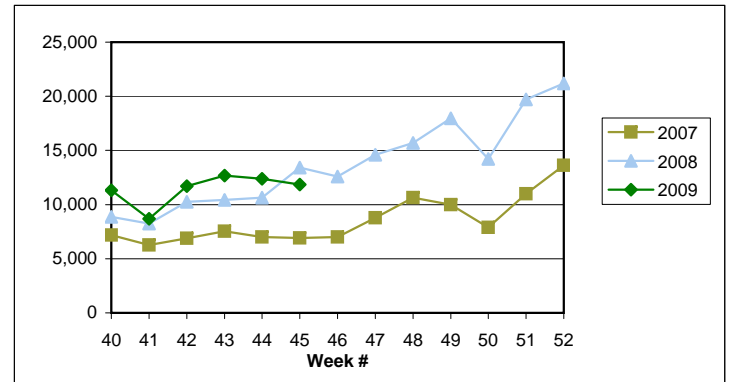


[janet.l.orton@state.or.us](mailto:janet.l.orton@state.or.us)

**EB Trigger: 5.55**



**Regular Initial Claims: 11,854**



**Regular Weeks Claimed: 92,052**

