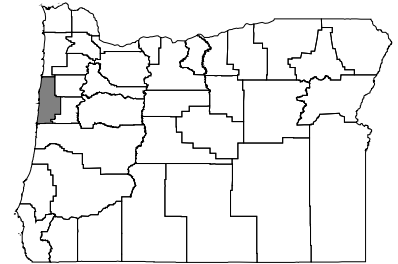


Lincoln County Tobacco Fact Sheet 2009

Background Information

- 8,572 youth and 36,058 adults live in Lincoln County, representing one percent of Oregon's total population.
- Lincoln County currently receives \$61,246 per year for local tobacco prevention. The Centers for Disease Control and Prevention (CDC) recommend an investment of \$196,372 for Lincoln County.



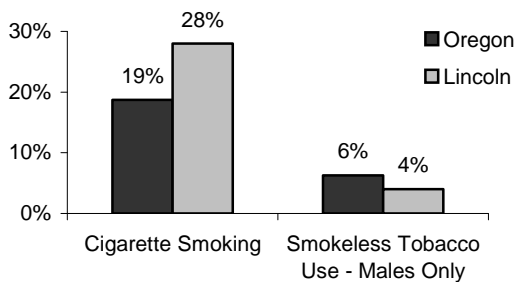
Tobacco's Toll on Lincoln County in One Year

- 10,096 adults** regularly smoke cigarettes.
- 3,029 people** suffer from a serious illness caused by tobacco use.
- 155 people** die from tobacco use (28 percent of all deaths in this county).
- Over \$24 million** is spent on medical care for tobacco-related illnesses.
- \$26 million** in productivity is lost due to tobacco-related deaths.

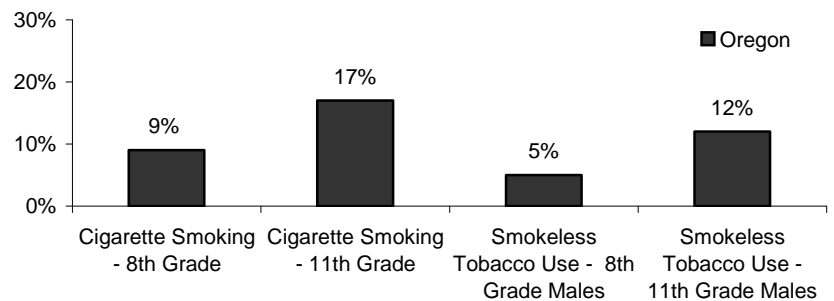
Tobacco Use Among Adults and Youth

In Oregon, 19 percent of adults are current smokers and 6 percent of adult males use smokeless tobacco. Among youth in the state, 9 percent of 8th graders and 17 percent of 11th graders smoke cigarettes.

Current Adult Tobacco Use



Current Youth Tobacco Use

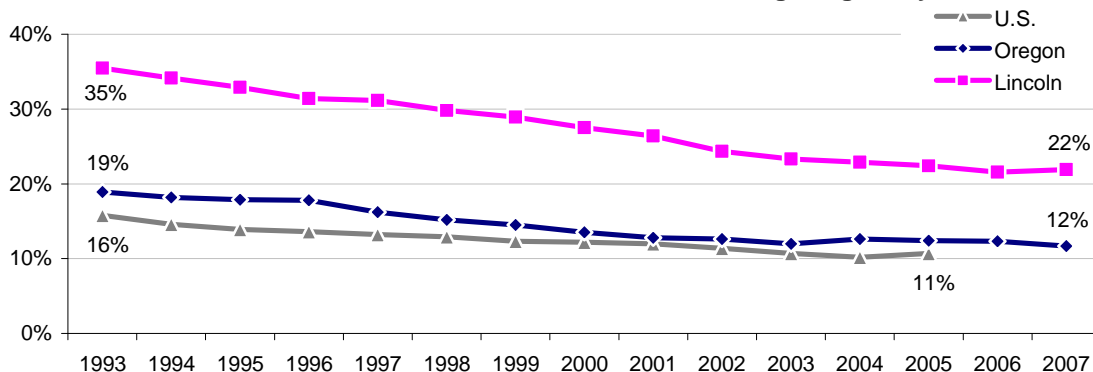


* Data about tobacco use among Lincoln County youth are unavailable because no schools in Lincoln County participated in the Oregon Healthy Teens Survey in 2005 and 2006.

Tobacco Use During Pregnancy

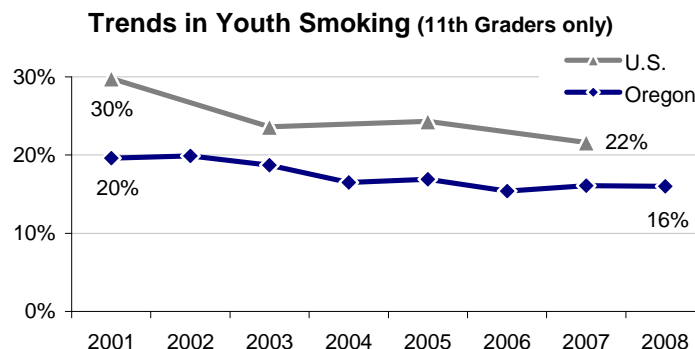
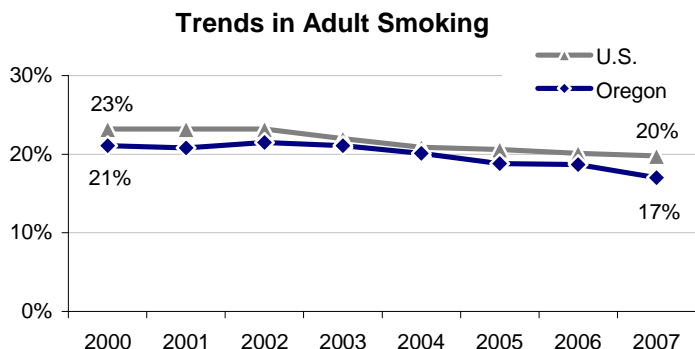
Since 1993, the percentage of infants born to mothers in Oregon who used tobacco while pregnant has decreased 37 percent.

Infants Born to Mothers Who Used Tobacco During Pregnancy



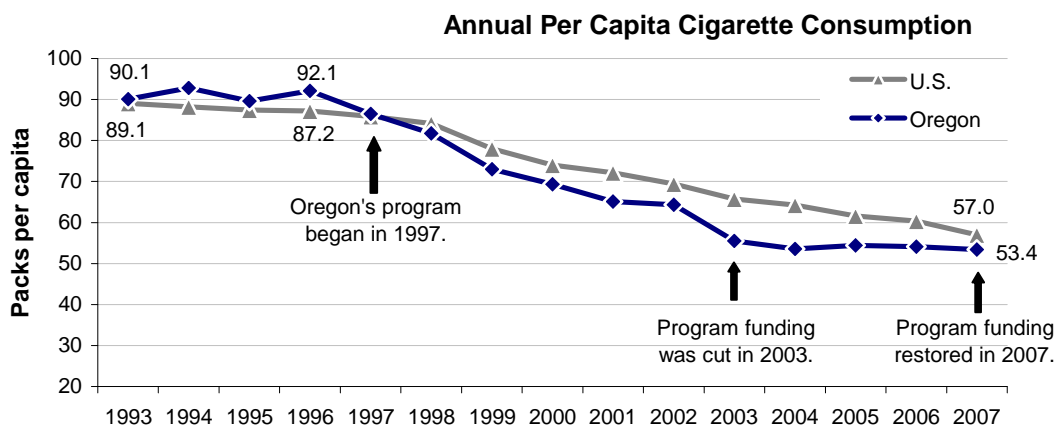
Trends in Smoking

Since 2000, cigarette smoking among Oregon adults has declined 19 percent. Since 2001, smoking among 11th graders in Oregon has declined 20 percent.



Cigarette Consumption in Oregon

Oregon has had a 42 percent decrease in per capita cigarette consumption from 1996 to 2007.

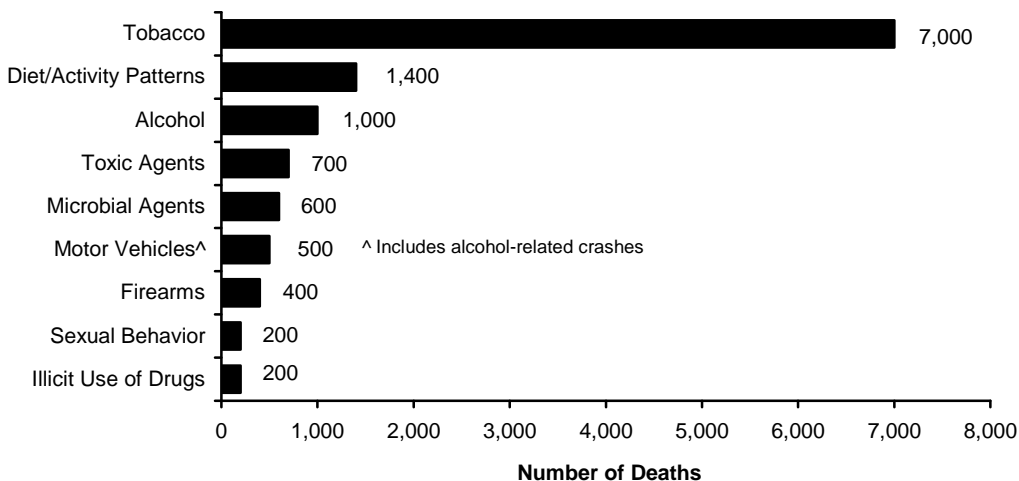


Cigarette consumption data measure the quantity of cigarettes used within a particular area during a specific period of time.

Deaths in Oregon

Approximately 30,000 Oregonians die each year. Over 22 percent of these deaths are linked to tobacco.

Actual Causes of Death Among Oregonians



TECHNICAL NOTES AND DOCUMENTATION AVAILABLE AT: www.healthoregon.org/tobacco

Suggested Citation

Tobacco Prevention and Education Program. *Lincoln County Tobacco Fact Sheet 2009*. Portland, Oregon: Oregon Department of Human Services, Oregon Public Health Division, 2008.

Tobacco Prevention & Education Program
Oregon Public Health Division
800 NE Oregon Street, Suite 730
Portland, OR 97232
(971) 673-0984
www.healthoregon.org/tobacco