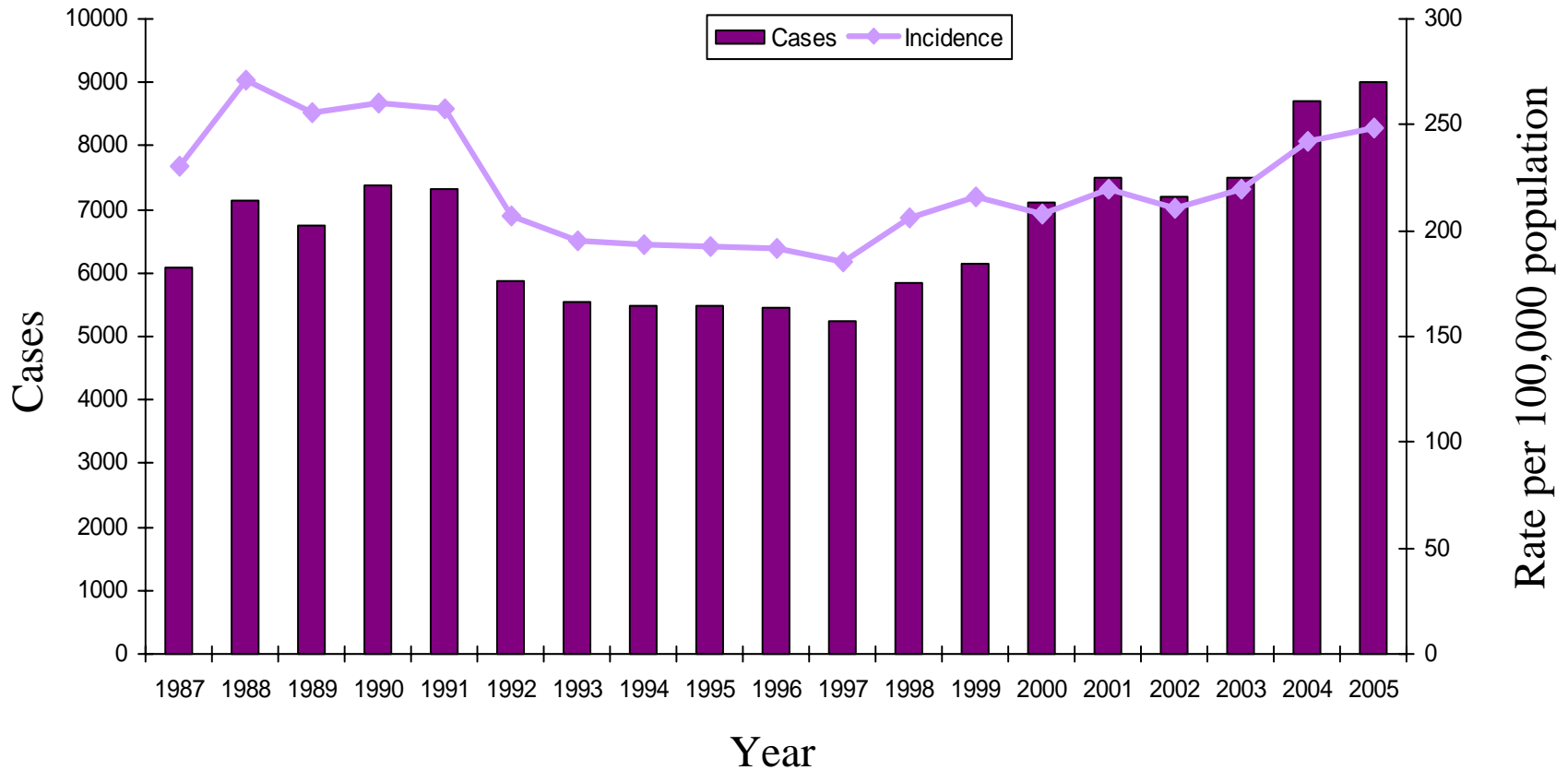


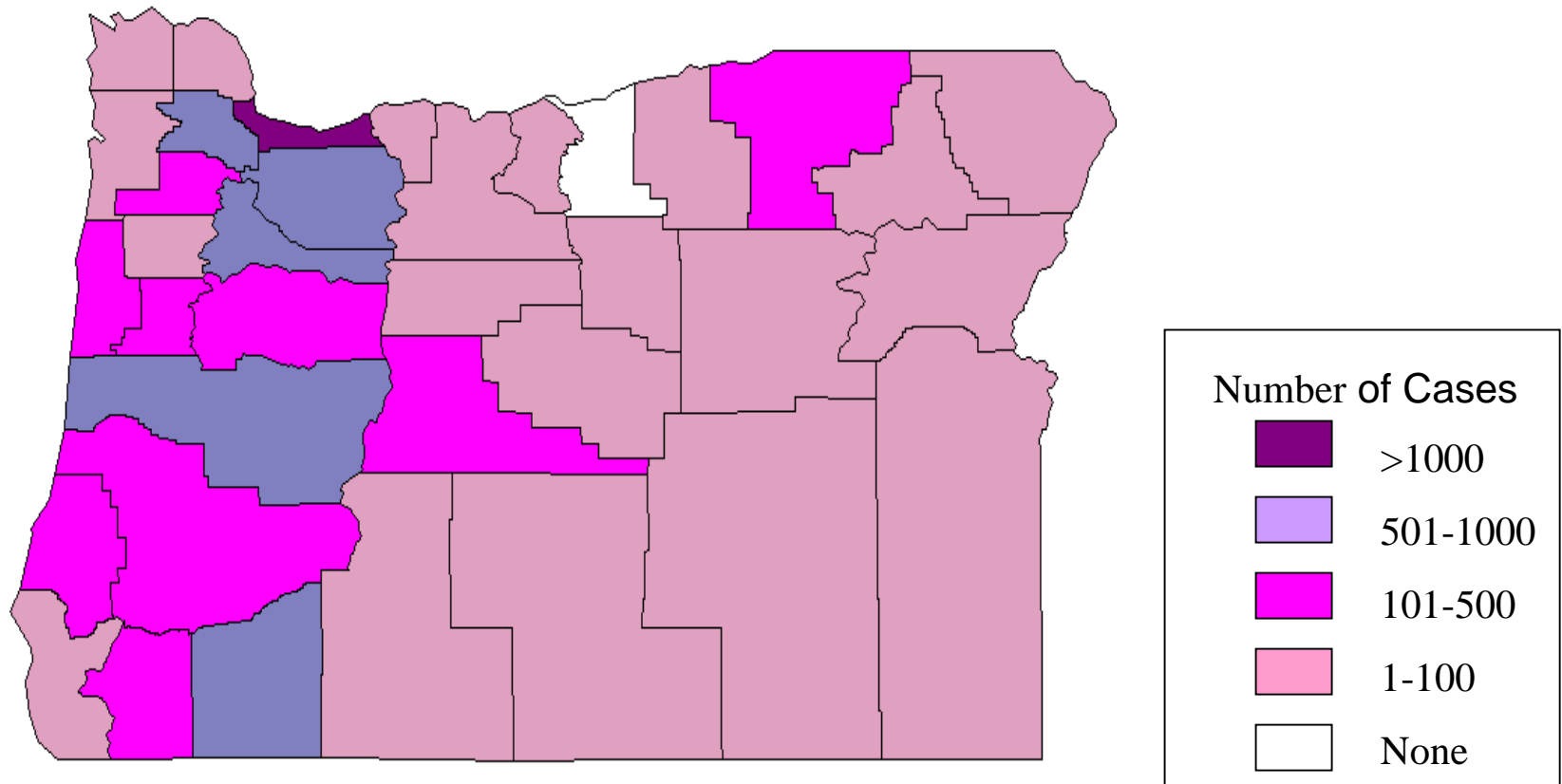
Oregon
Sexually Transmitted Disease Program
Chlamydia Case Data
2005

Chlamydia Cases and Incidence Oregon, 1987-2005



Note: Chlamydia became reportable in Oregon on July 1, 1987. Case number and rate presented for 1987 were calculated by doubling the cases reported for the last six months of 1987.

Chlamydia Cases by County of Residence Oregon, 2005



Chlamydia in the most affected Counties Oregon, 2005

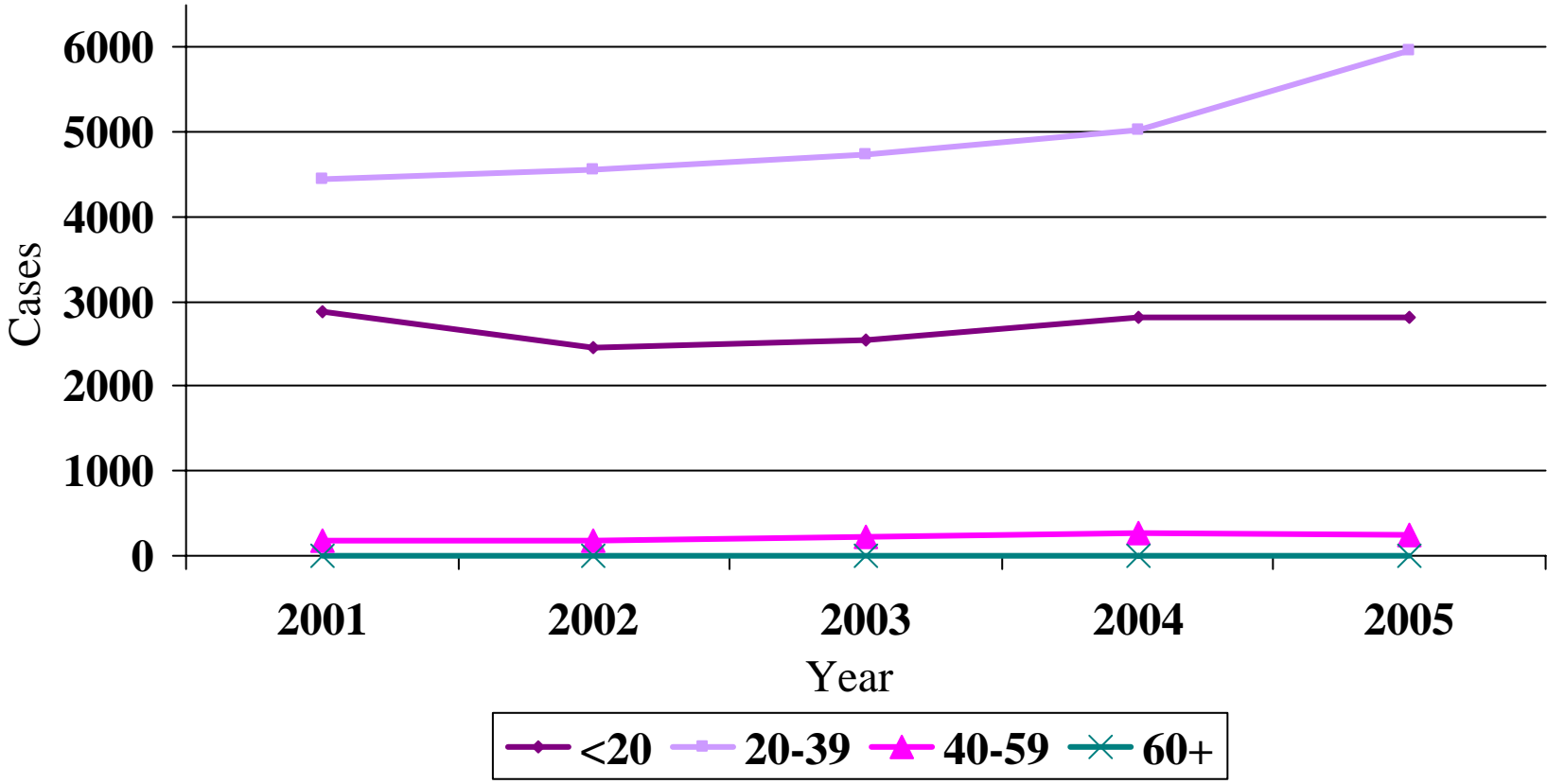
County	Cases	% of State	Incidence*
Multnomah	2869	32%	414.1
Washington	998	11%	203.8
Lane	891	10%	365.1
Marion	864	10%	286.0
Total of 4 counties	5622	62%	---

*per 100,000 population

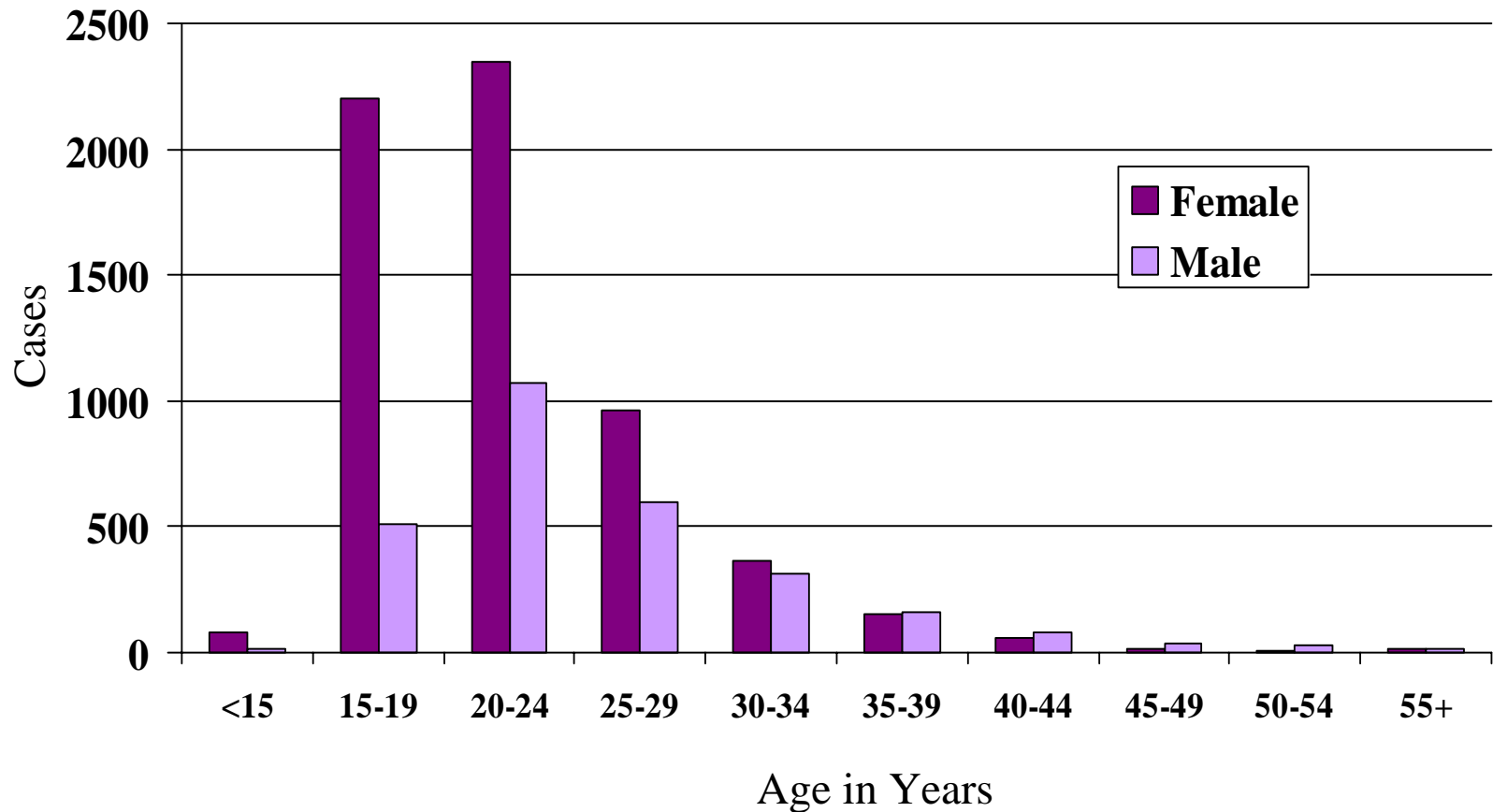
Chlamydia Cases by Gender Oregon, 2001-2005



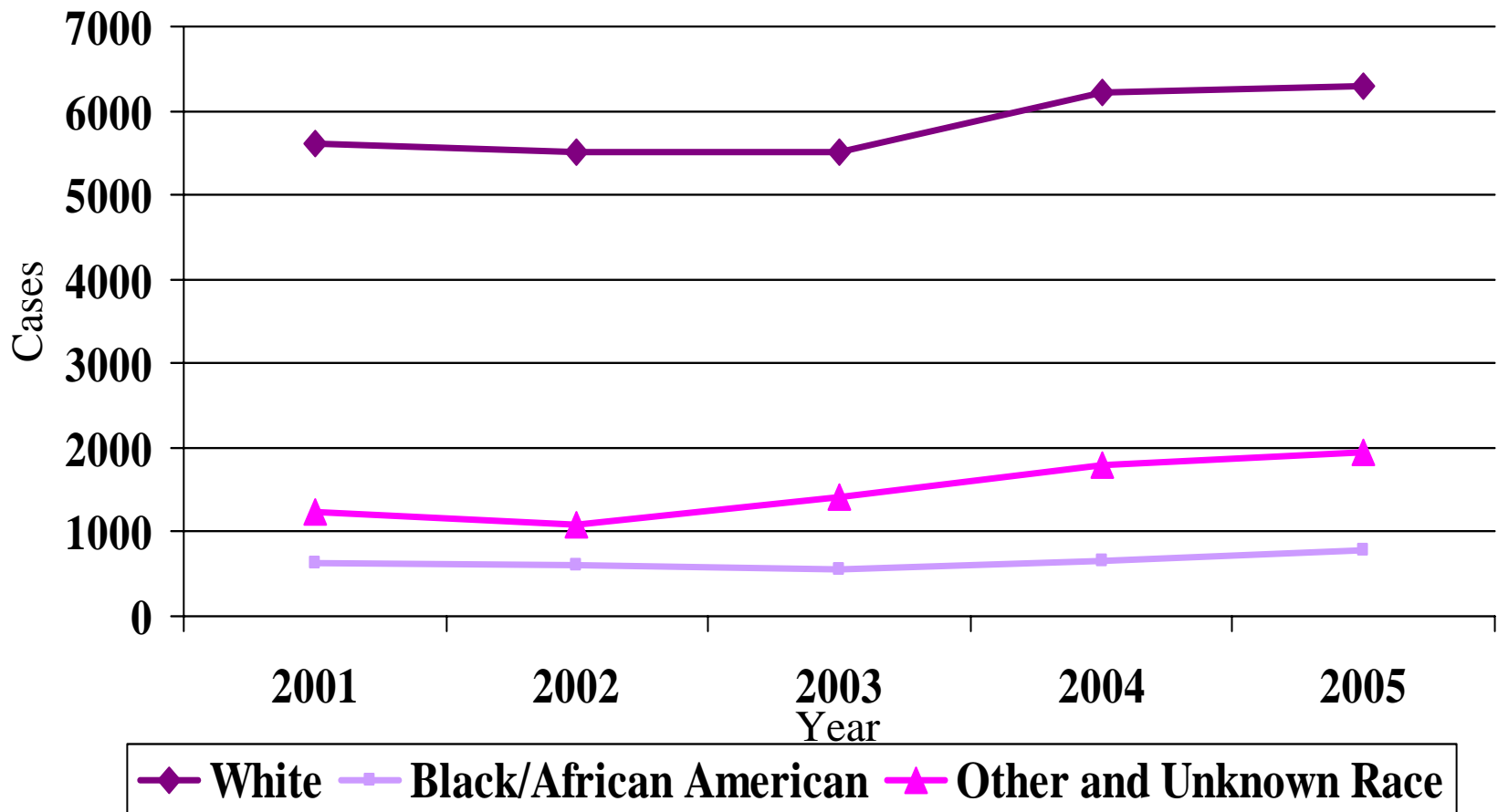
Chlamydia Cases by Age Group Oregon, 2001-2005



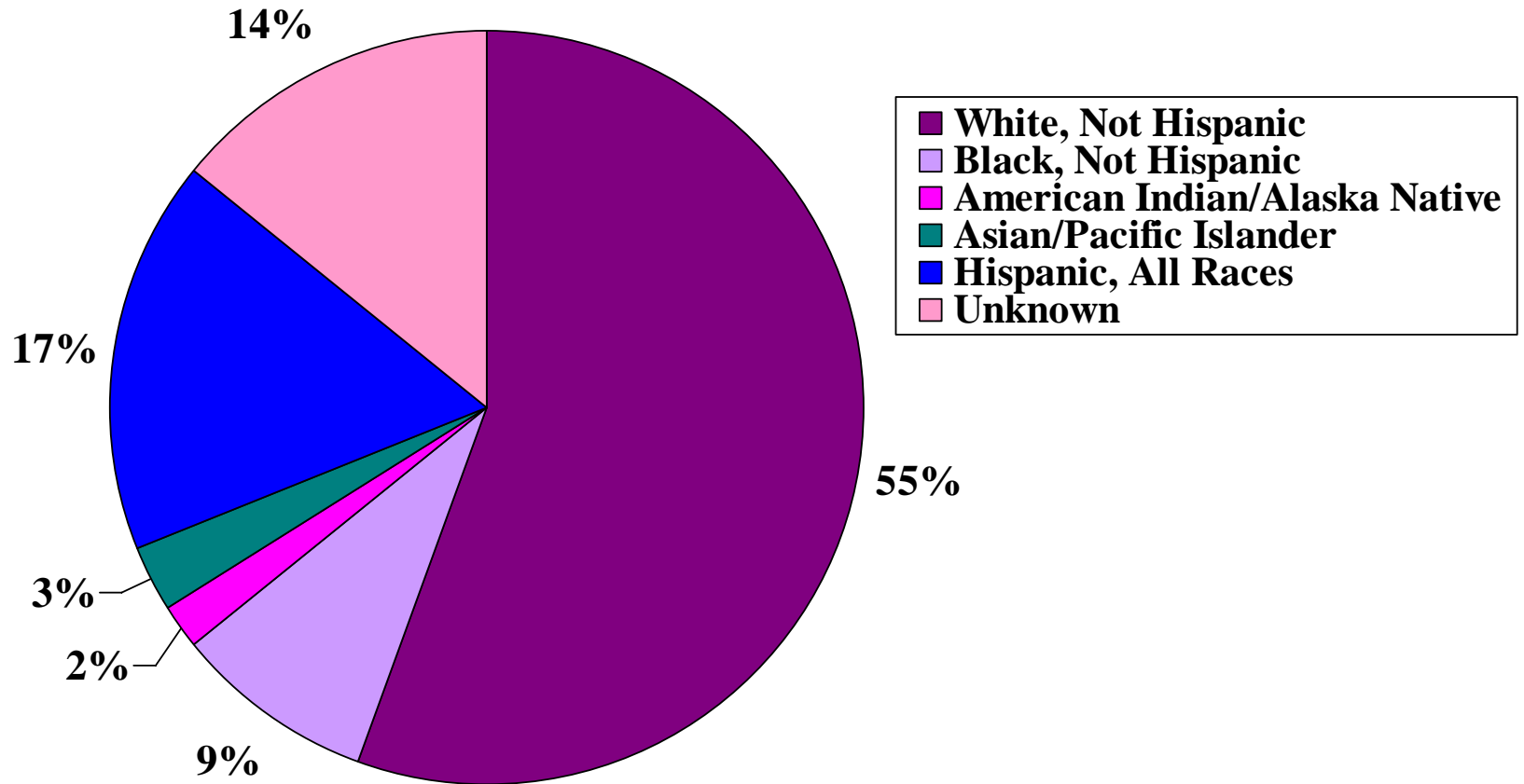
Chlamydia Cases by Gender and Age Oregon, 2005



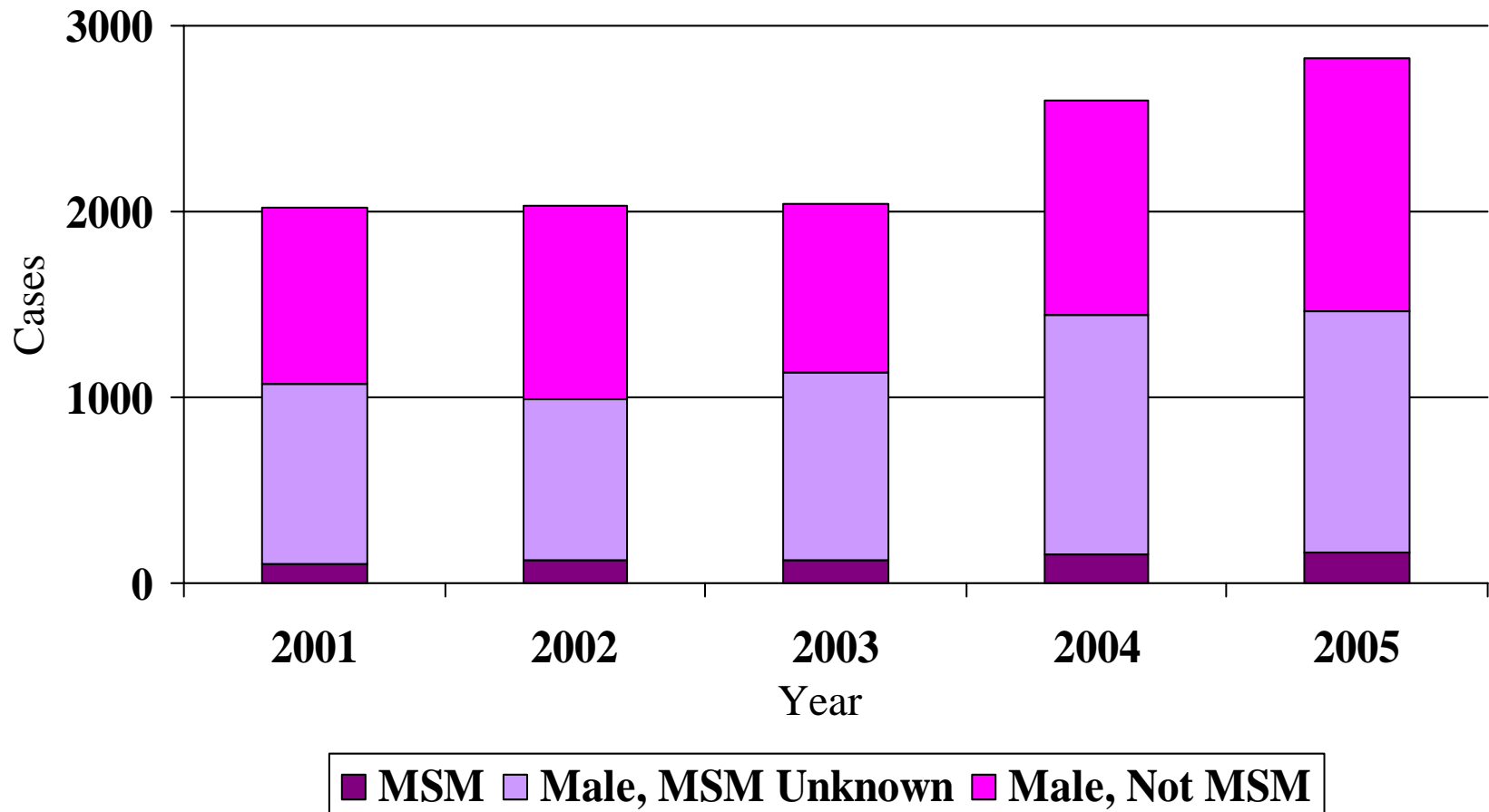
Chlamydia Cases by Race Oregon 2001-2005



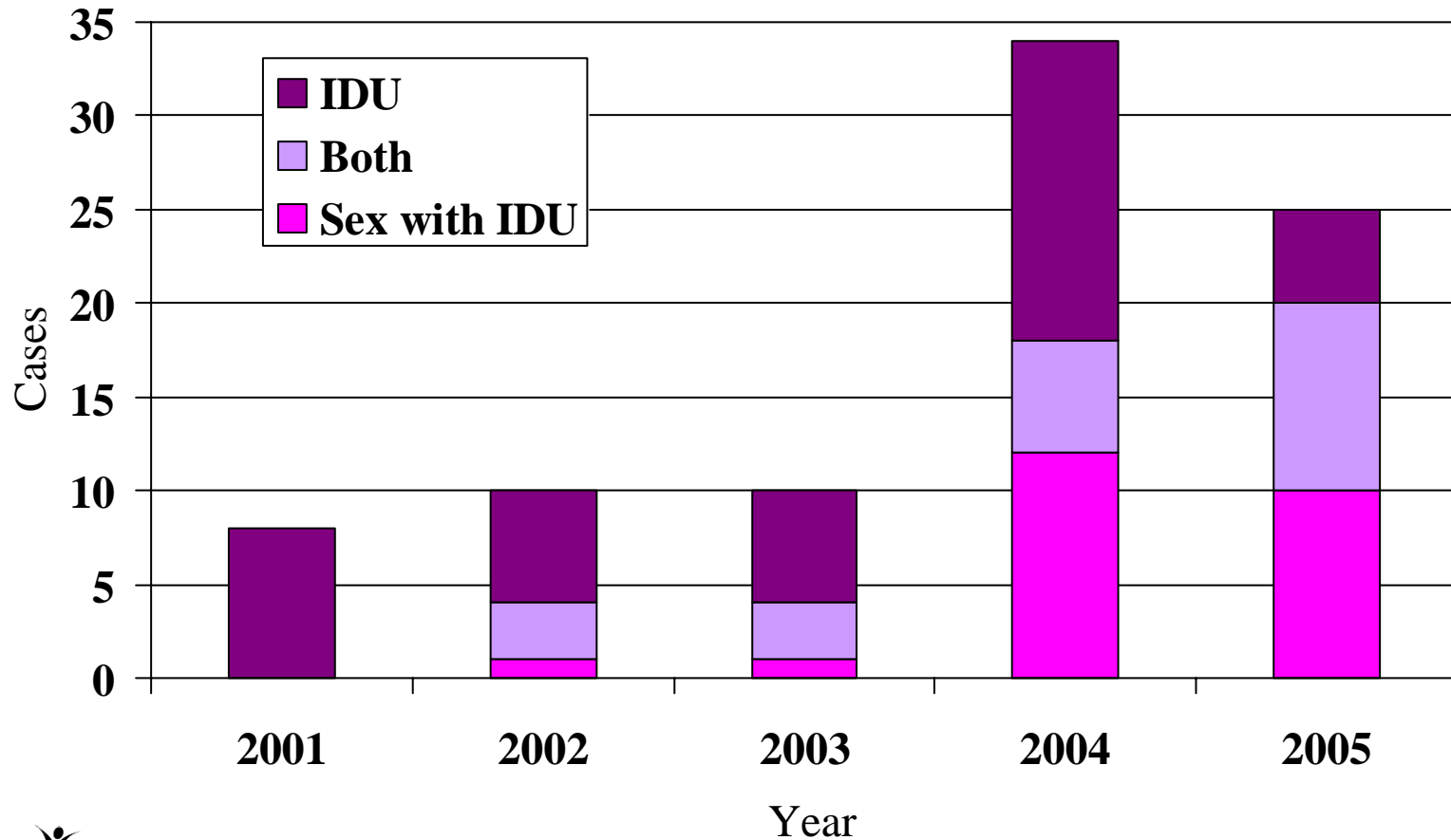
Chlamydia Cases by Race & Ethnicity Oregon, 2005



Chlamydia Cases among Men by MSM Status Oregon 2001-2005



Chlamydia Cases and Injection Drug Use Oregon 2001-2005



Chlamydia Cases Co-Morbidity with Early Syphilis, and Gonorrhea Oregon, 2001-2005

