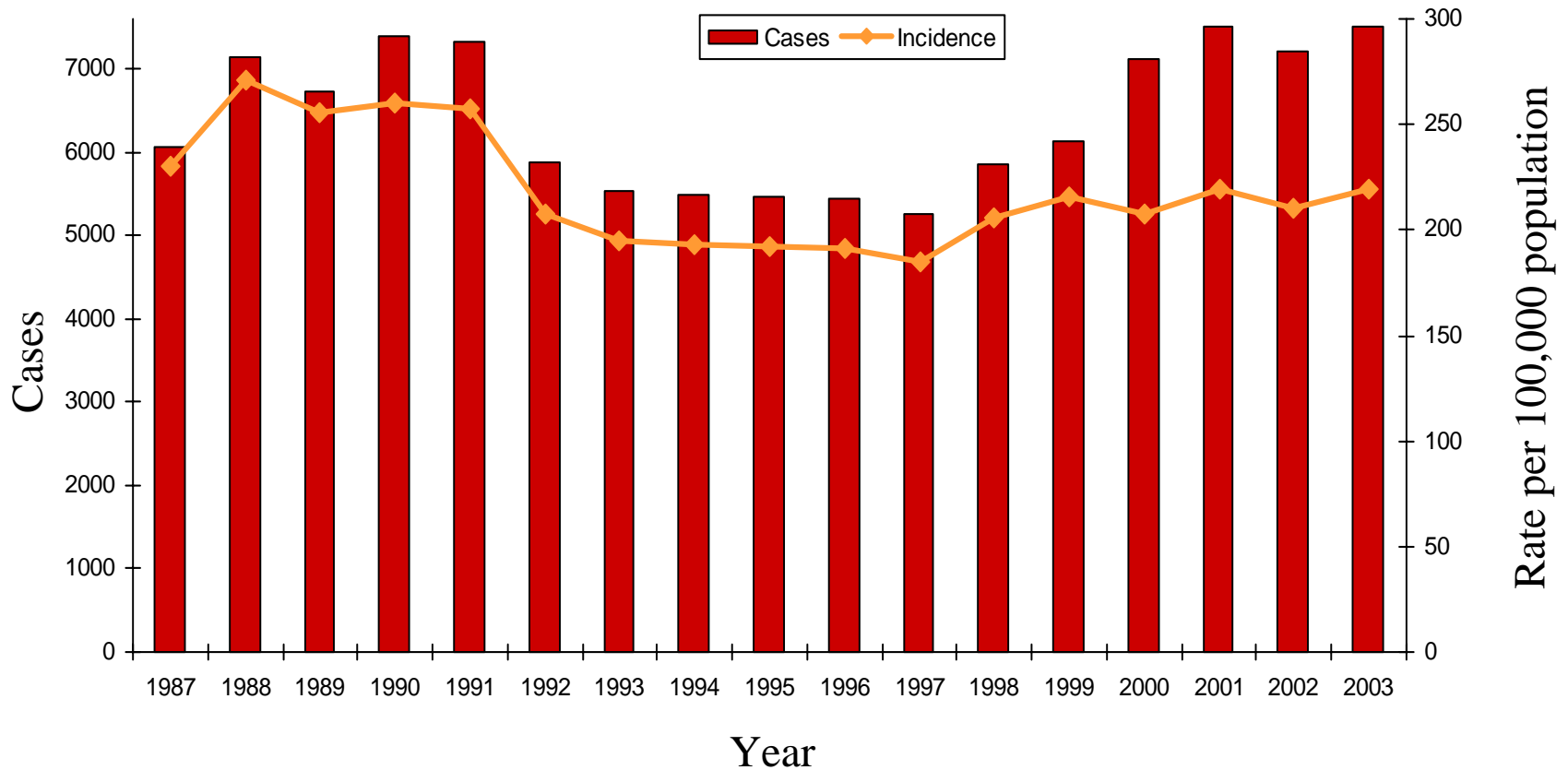


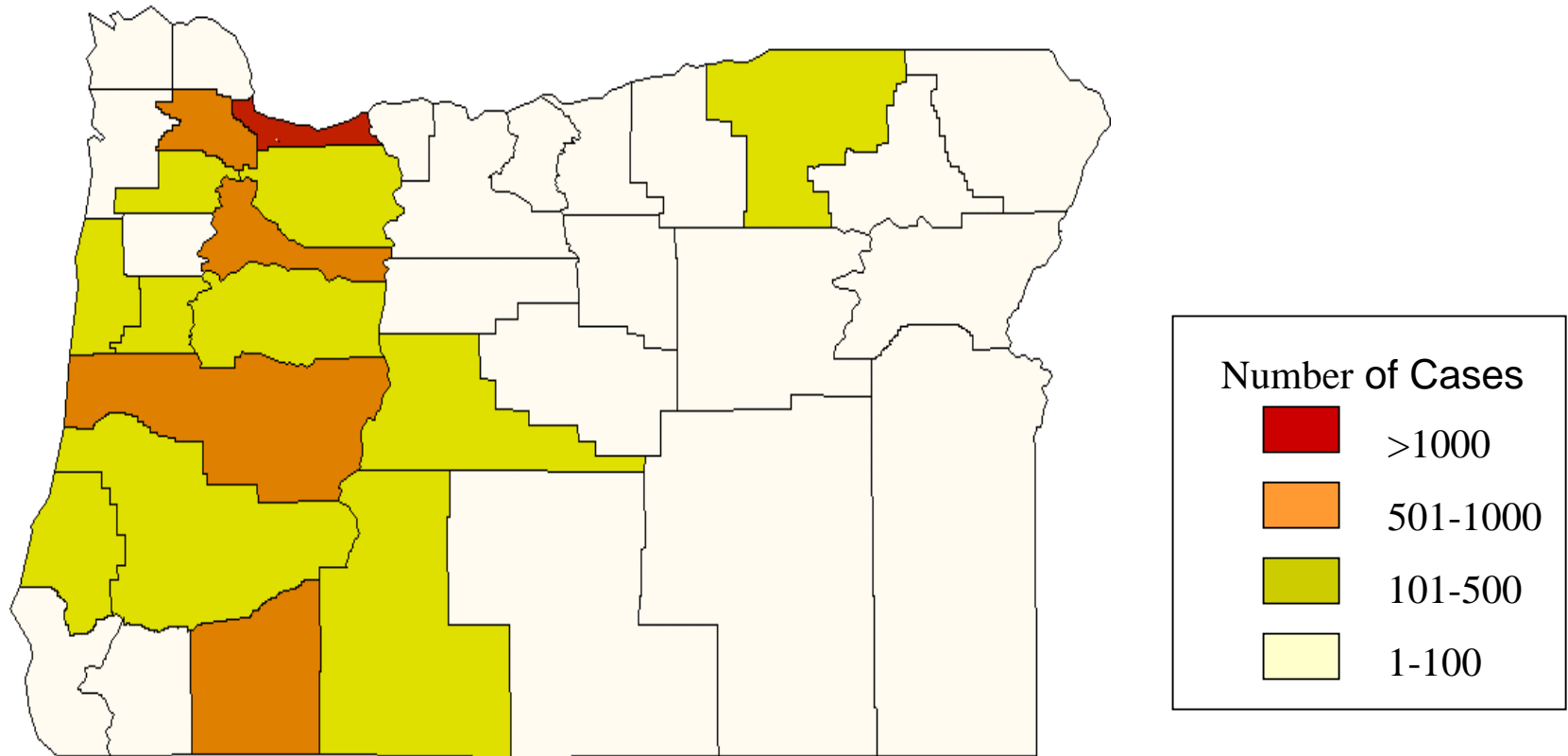
Oregon
Sexually Transmitted Disease Program
Chlamydia Case Data
2003

Chlamydia Cases and Incidence Oregon, 1987-2003



Note: Chlamydia became reportable in Oregon on July 1, 1987. Case number and rate presented for 1987 were calculated by doubling the cases reported for the last six months of 1987.

Chlamydia Cases by County of Residence Oregon, 2003

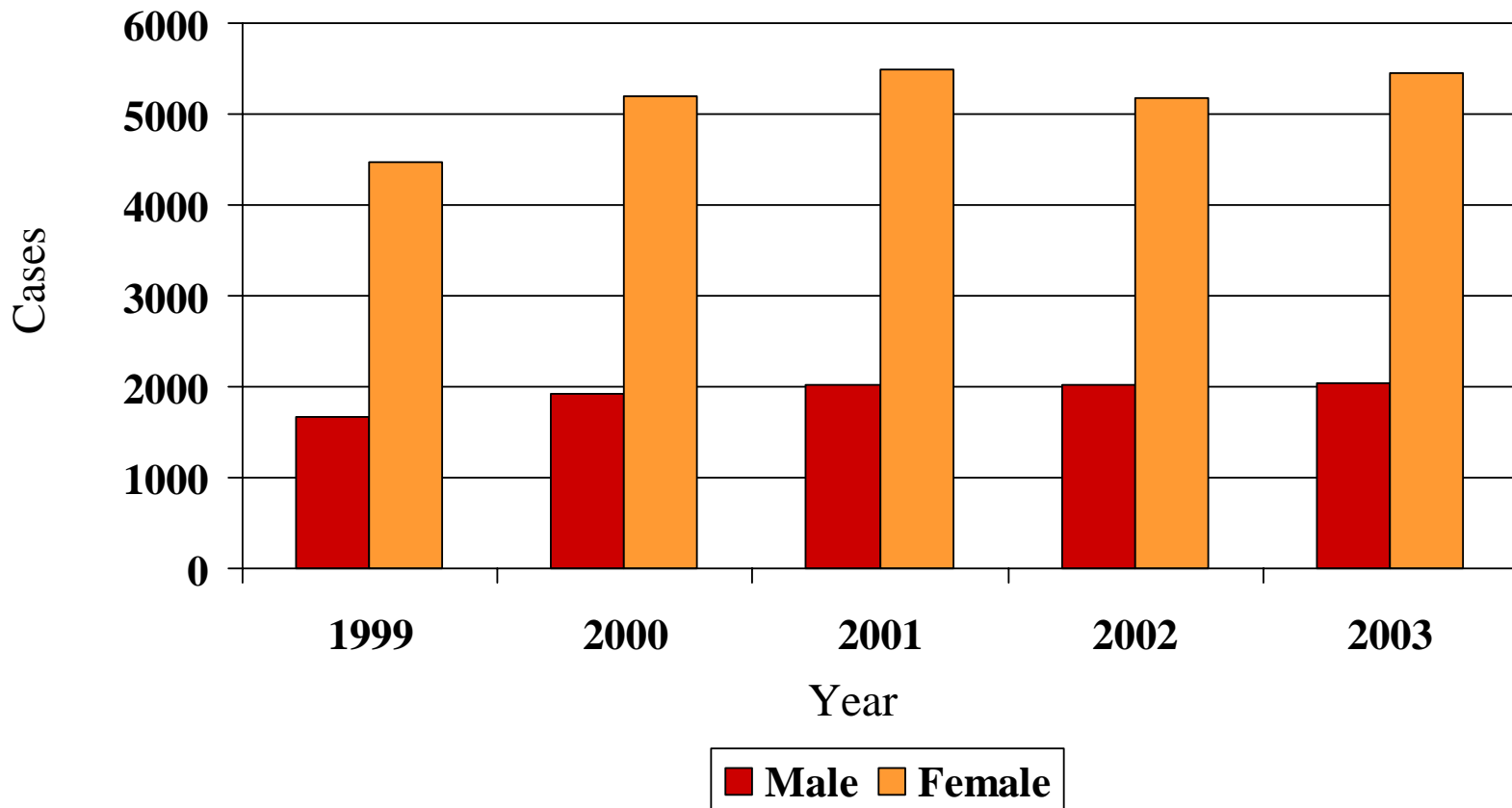


Chlamydia in the most affected Counties Oregon, 2003

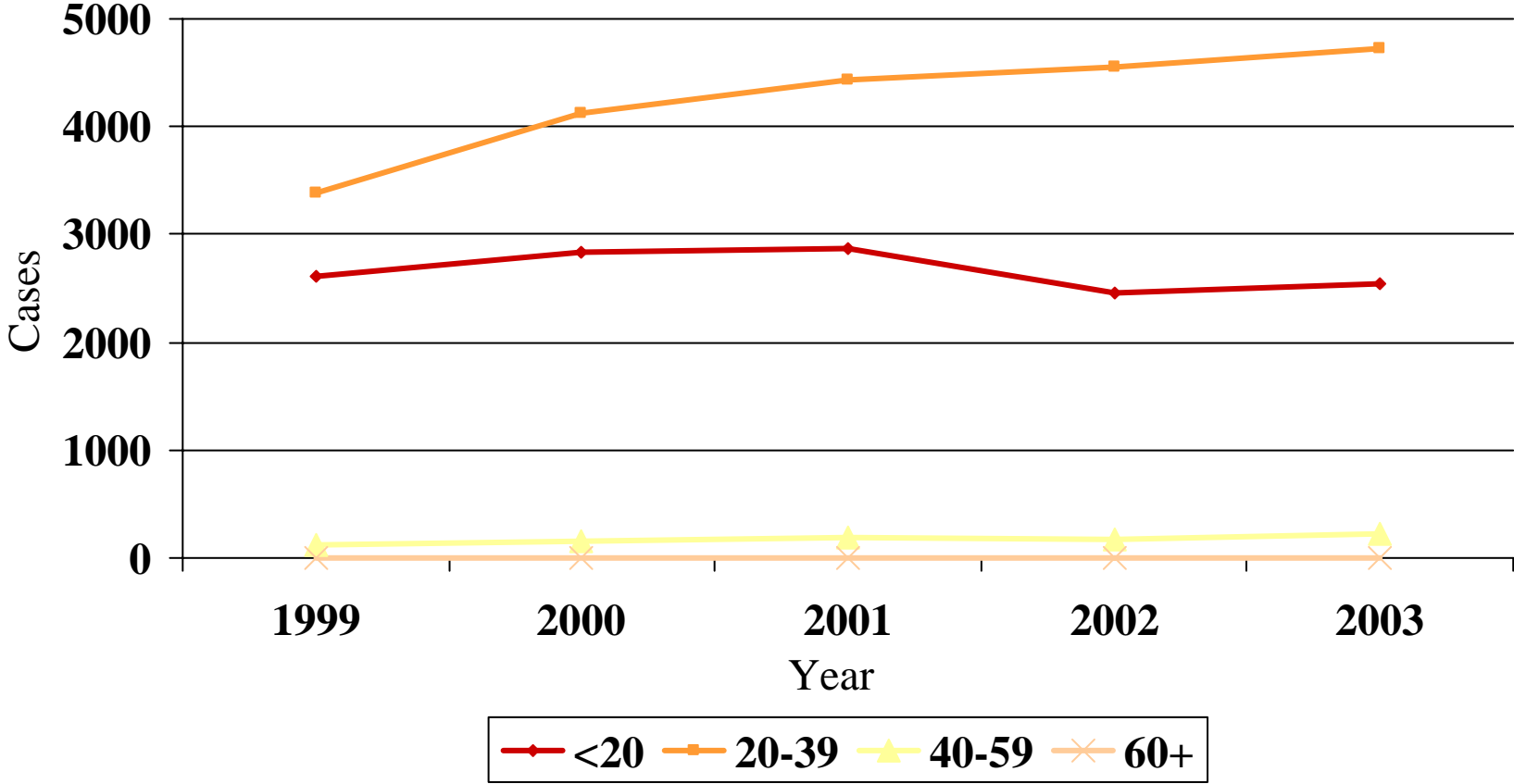
County	Cases	% of State	Incidence*
Multnomah	2333	31%	344.2
Lane	809	11%	245.6
Washington	787	10%	166.5
Marion	760	10%	256.8
Total of 4 counties	4689	63%	---

*per 100,000 population

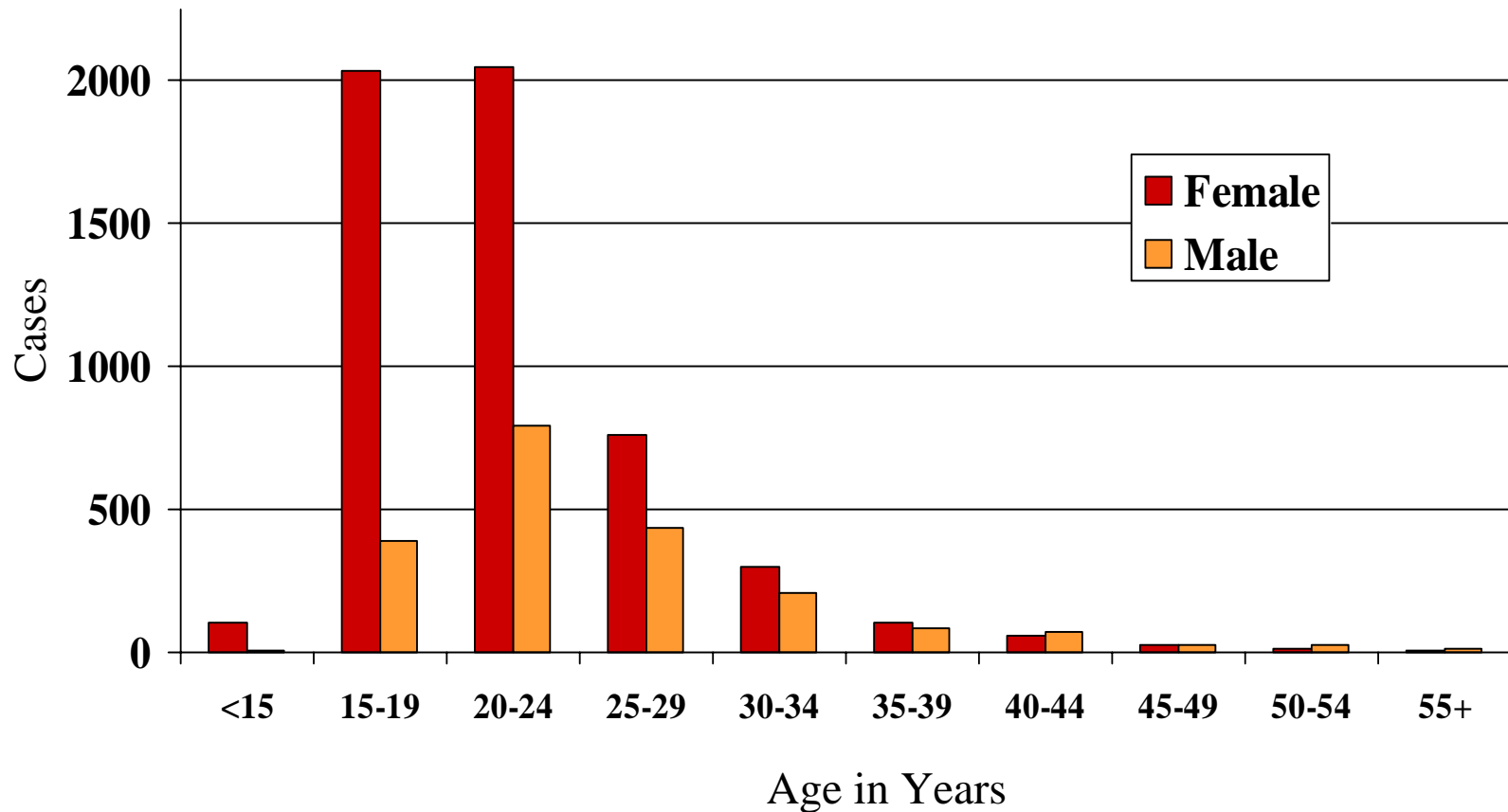
Chlamydia Cases by Gender Oregon, 1999-2003



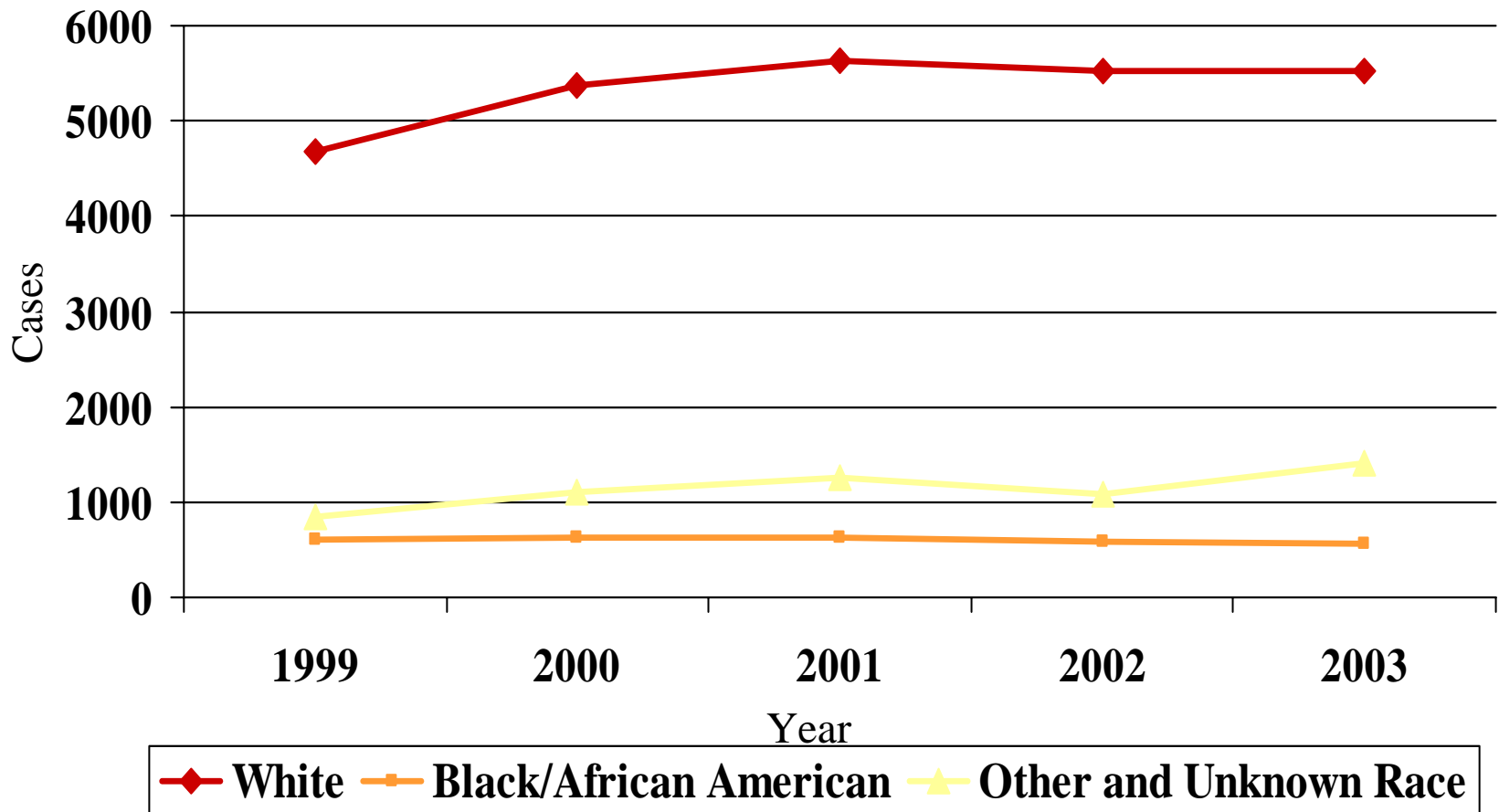
Chlamydia Cases by Age Group Oregon, 1999-2003



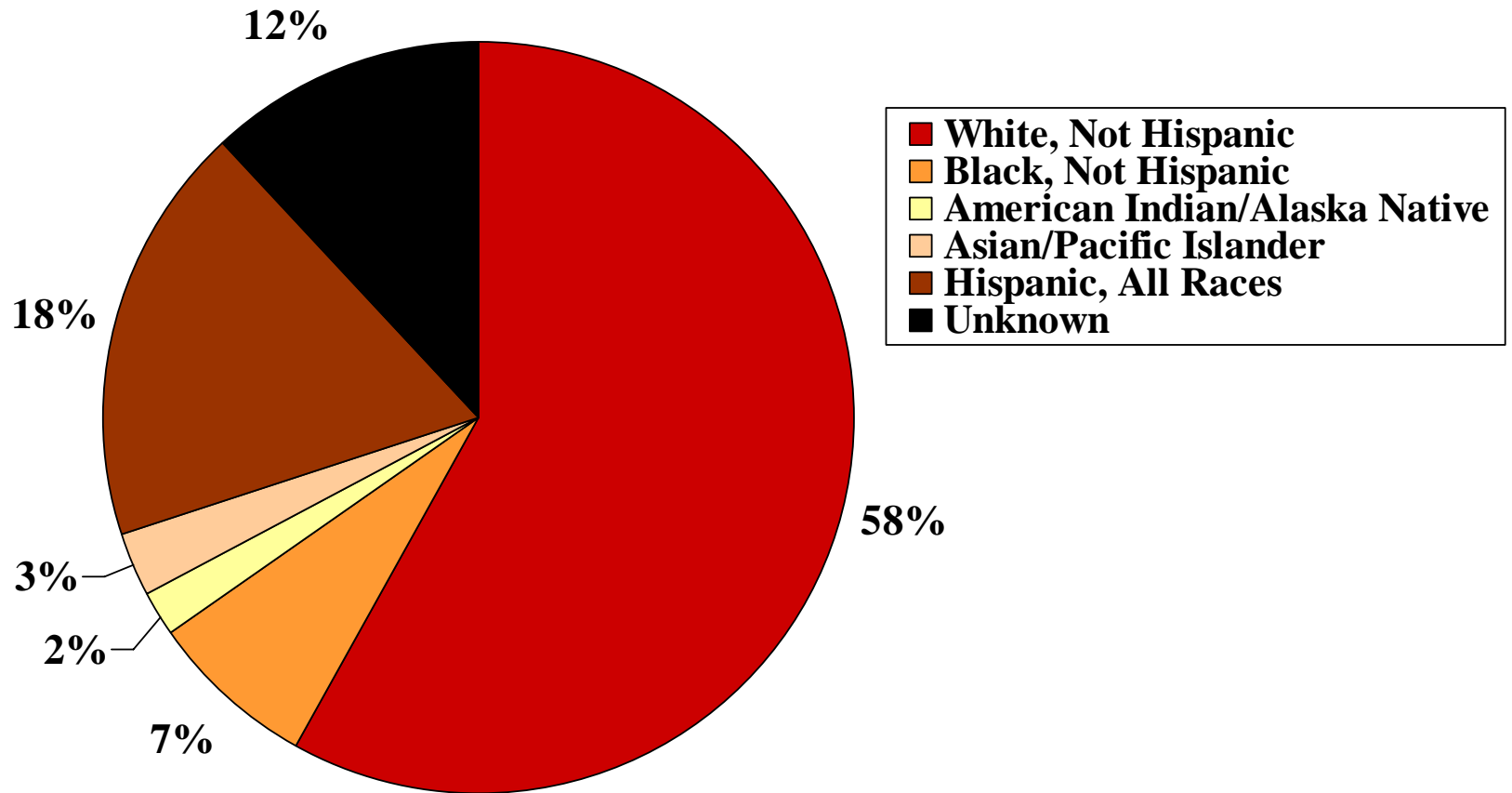
Chlamydia Cases by Gender and Age Oregon, 2003



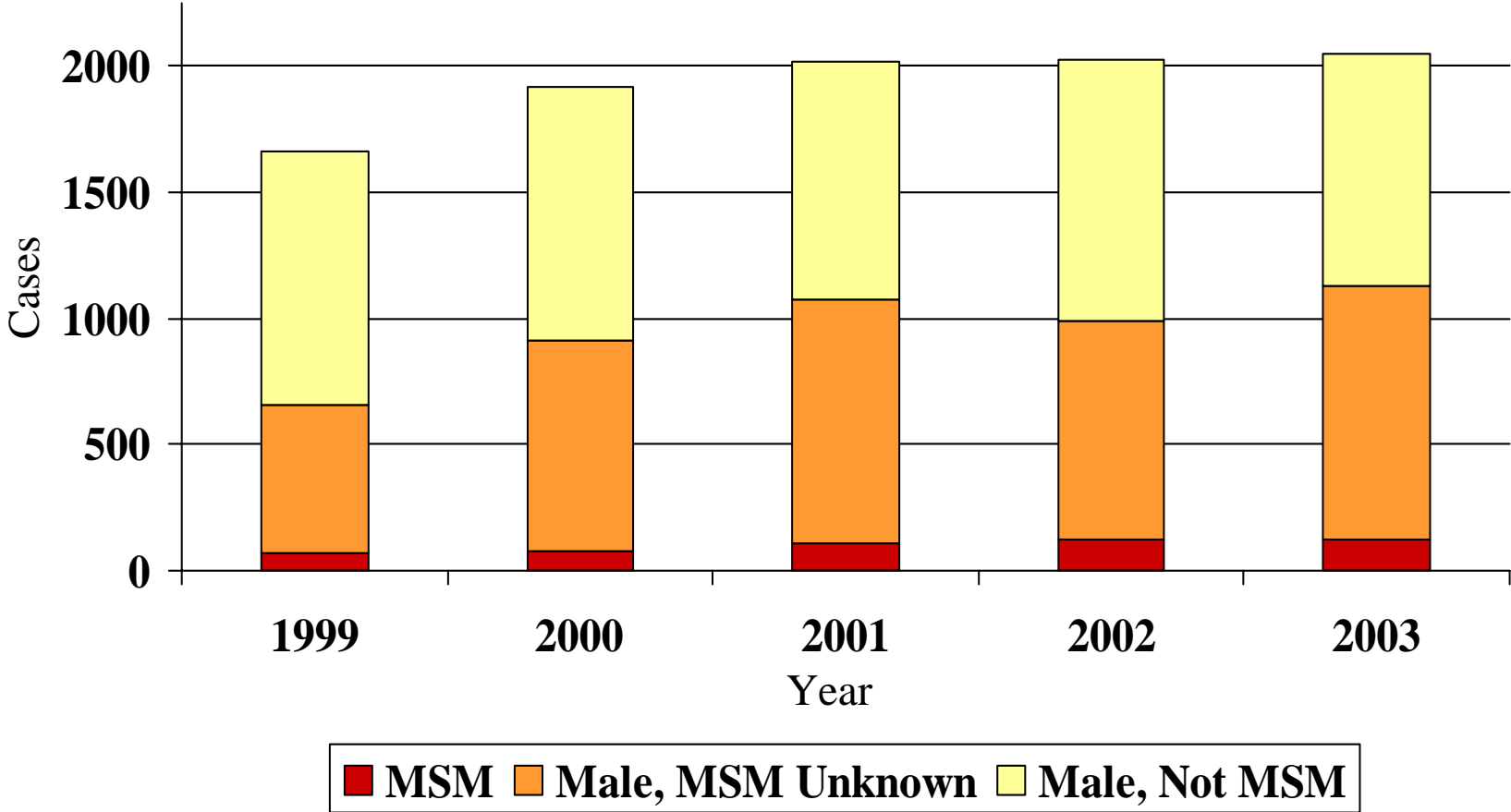
Chlamydia Cases by Race Oregon 1999-2003



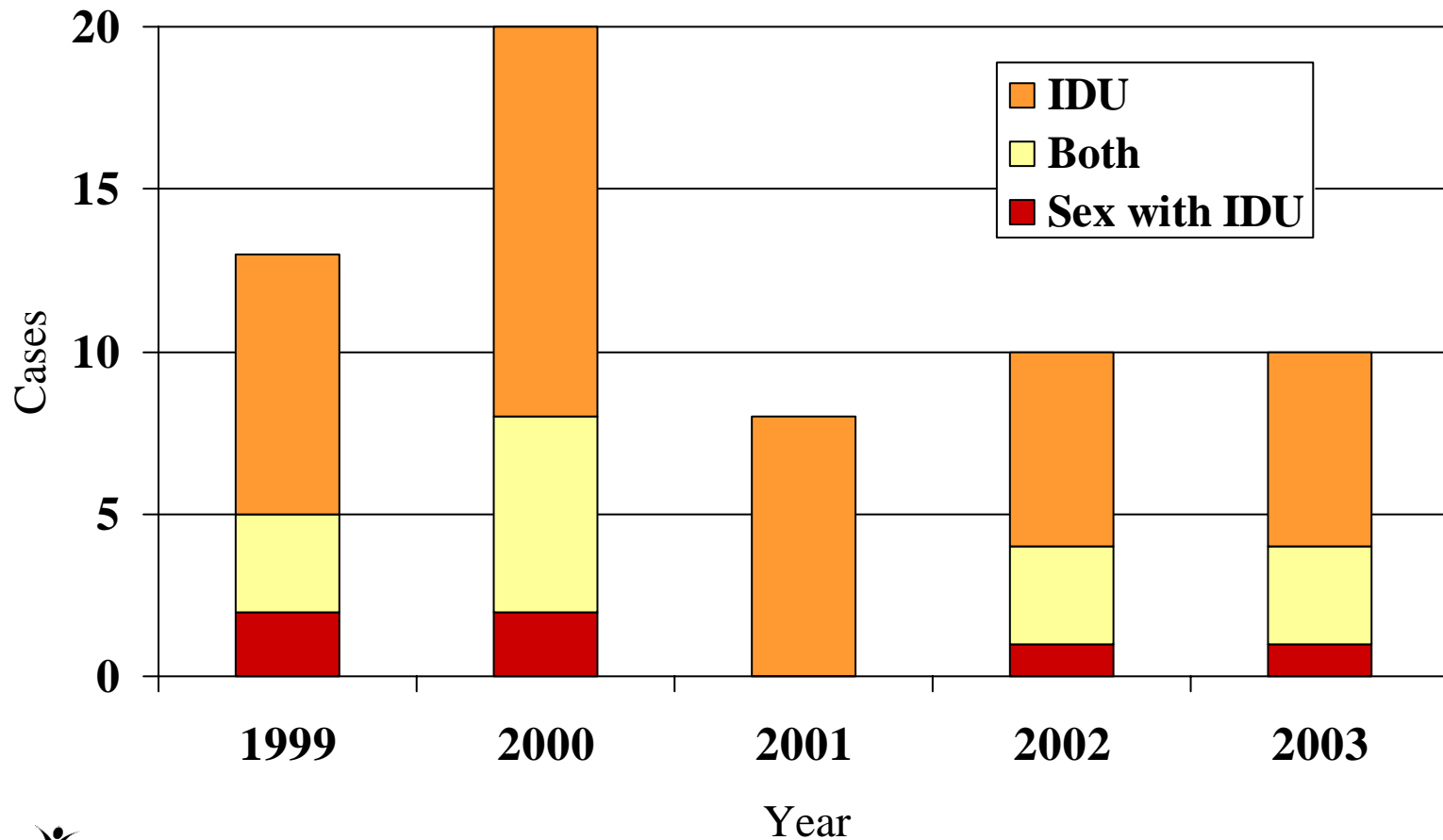
Chlamydia Cases by Race & Ethnicity Oregon, 2003



Chlamydia Cases among Men by MSM Status Oregon 1999-2003



Chlamydia Cases and Injection Drug Use Oregon 1999-2003



Chlamydia Cases Co-Morbidity with Early Syphilis, and Gonorrhea Oregon, 1999-2003

