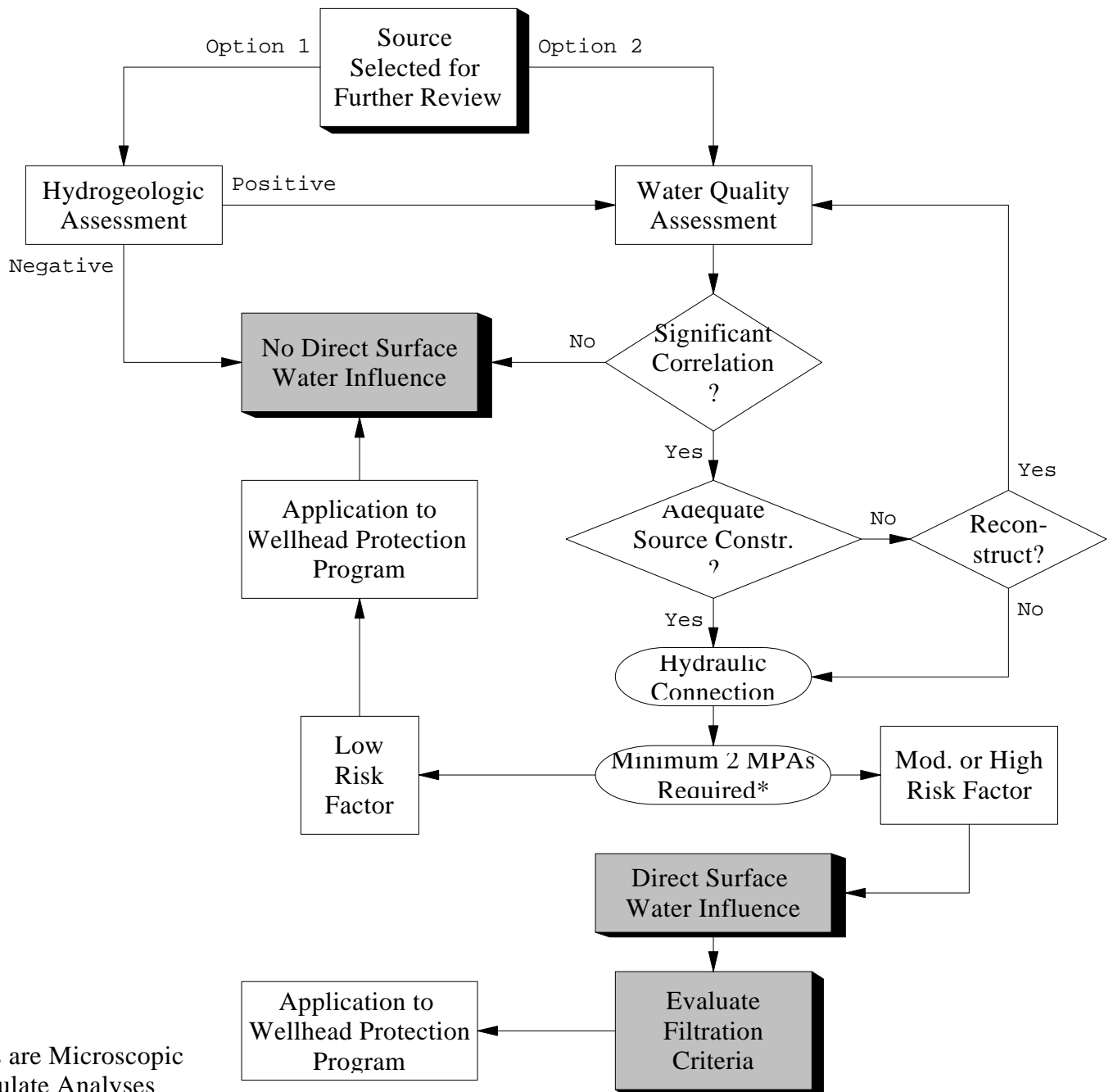


**DETERMINATION OF GROUNDWATER SOURCES
UNDER DIRECT SURFACE WATER INFLUENCE**
OHD Drinking Water Program

State Level Review:

- | <u>Criteria</u> | <u>Threshold</u> |
|-------------------------------|--|
| 1. Proximity to Surface Water | <500 feet |
| 2. Coliform Bacteria | Source-related presence |
| 3. Source Construction | Inadequate grout seal or no impervious aquifer barrier |

Selection requiring further review by system occurs if threshold of criteria 1 and either 2 or 3 are met.



* MPAs are Microscopic Particulate Analyses