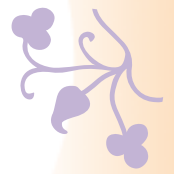


# Crib Safety Guidelines



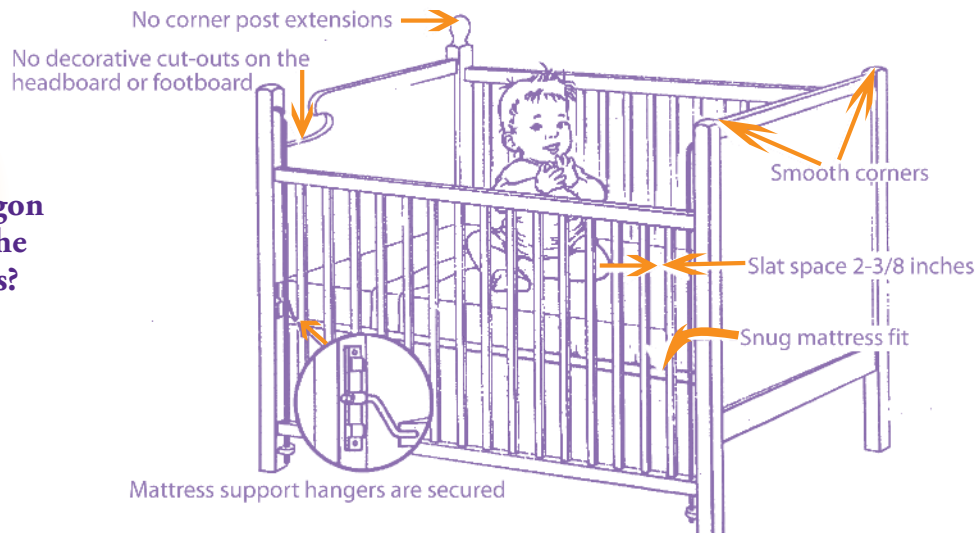
Check the CPSC hotline for recall information at [1-800-638-2772](tel:1-800-638-2772) or [www.cpsc.gov](http://www.cpsc.gov)  
Learn more at [www.cribsafety.org](http://www.cribsafety.org), [www.dannyfoundation.org](http://www.dannyfoundation.org),  
and [www.oregon.gov/dhs/ph/safekids](http://www.oregon.gov/dhs/ph/safekids)

## Is my baby's crib safe?

To learn if your crib is safe, put your crib to this test:

- No missing, loose, broken, or improperly installed screws, brackets, or other hardware on the crib or the mattress support
- No more than 2 3/8 inches between crib slats, so a baby's body cannot fit through the slats
- A firm, snug-fitting mattress, so a baby cannot get trapped between the mattress and the side of the crib
- No corner posts over 1/16 of an inch above the end panels (unless they are over 16 inches high for a canopy), so a baby cannot catch clothing and strangle
- No cutout areas on the headboard or footboard so a baby's head cannot get trapped
- A mattress support that does not easily pull apart from the corner posts, so a baby cannot get trapped between mattress and crib
- No splinters or rough edges, or tears in mesh or fabric sides
- A rail height of 26 inches from the top of the railing to the mattress support at its lowest level.
- A crib that was manufactured after 1990, or has an ASTM or CPSC certification seal showing that it meets national safety standards.
- If painted, only non-lead paint was used.

**Did you know it is illegal to sell a crib second-hand in Oregon that does not meet the above crib guidelines?**



If your baby's crib did not meet any of these guidelines, destroy it and replace it with a safe crib.

Regularly perform a safety check on your baby's crib, portable crib, and playpen, both at home and at childcare.

