

Cancer Prevention and Control Centers for Disease Control & Prevention

Melonie Thomas, MBA
Program Consultant
Program Services Branch
Division of Cancer Prevention & Control



Objectives of Presentation

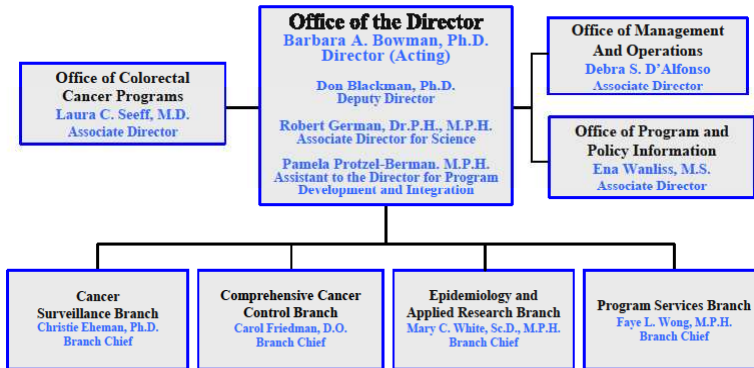
- ◆ Provide an overview of the CDC National Breast and Cervical Cancer Early Detection Program
 - Goals/Vision of Program
 - CDC Program Requirements
 - Oregon's Role to Meeting National Goals



Division of Cancer Prevention and Control

National Center for Chronic Disease Prevention and Health Promotion

Coordinating Center for Health Promotion



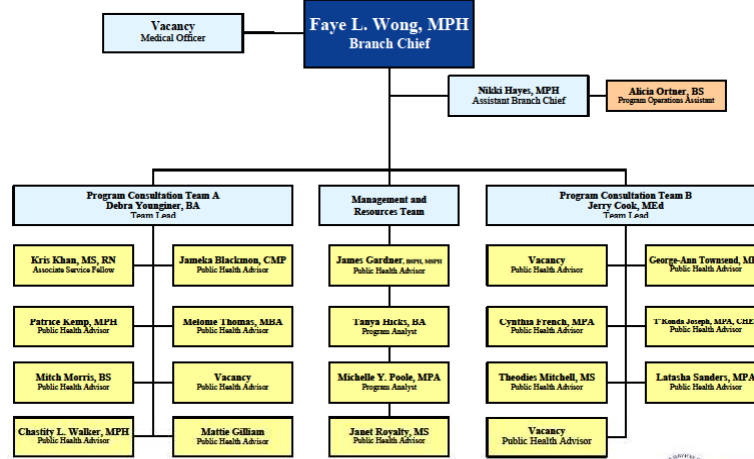
February 2009



SAFER • HEALTHIER • PEOPLE®



Program Services Branch Division of Cancer Prevention and Control NCCDPPH, CCHP



FTE
Non FTE FTE, Management

February 2009

SAFER • HEALTHIER • PEOPLE®



Program Services Branch (PSB)

Core Values/Guiding Principles

- ✓ Our decisions are based on evidence* and are outcome driven.
- ✓ We are responsible stewards of Federal funds and program laws.
- ✓ We are committed to timely access to quality health care for all.
- ✓ We are committed to reducing health disparities.
- ✓ We collaborate with partners to achieve mutual goals.
- ✓ We value and respect our colleagues.
- ✓ We proactively anticipate needs, changes, and opportunities.

* Includes science, program, and other marketplace data



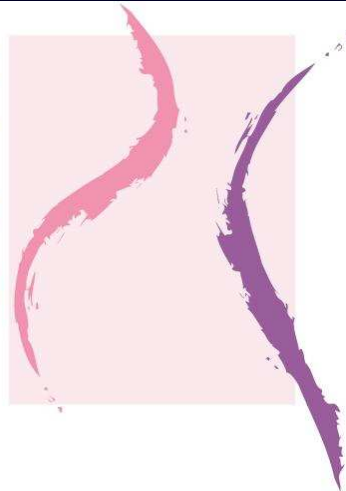
PSB Goals

- ✓ Reduce breast and cervical cancer mortality through public health approaches.
- ✓ Address environmental factors* to plan, manage, and communicate priorities.
- ✓ Provide highest level of support to grantees to maximize their performance.

* Environmental factors are those issues that may impact the ability of PSB to achieve its mission. They include potential reimbursement for more costly new technologies, health care reform/universal coverage trends, recent evidence of population declines in mammography rates, and increases in the eligible population due the rise in number of uninsured and an aging population ('Baby Boomers').



National Breast and Cervical Cancer Early Detection Program



Vision: Healthy women living cancer free

Mission: To lead and support breast and cervical cancer screening to save lives.

Goal: Reduce morbidity and mortality related to breast and cervical cancer



Breast and Cervical Mortality Prevention Act of 1990

- ◆ The Act required the following:
 - Priority to low-income women in provision of program services.
 - Program services must be available to women throughout the state



CDC NBCCEDP – Numbers At-A-Glance

- ◆ 50 CDC-funded states, DC, 5 territories, and 12 American Indian tribes/tribal organizations
- ◆ Between 1991 – 2007:
 - >3.3 million women served
 - >8.2 million screening examinations completed
 - 37,117 breast cancers detected
 - >121,000 pre-malignant cervical lesions & 2,324 cervical cancers

Source: October, 2007 MDE submission
Note: Program FY 2006 = July 1, 2005 - June 30, 2006



What is critical to achieving a successful cancer screening program?

Adherence to program guidance including that in the Funding Opportunity Announcement.



Grant Requirements

The *priority* population for NBCCEDP mammography services is women between the ages of 50 and 64 who are low-income (up to 250% of federal poverty level), who have not been screened in the past year, and who have no other source of health-care reimbursement, such as insurance. Recruitment efforts should be concentrated on this population.



- ◆ Twenty-percent of all clients *newly* enrolled for cervical cancer screening should be women who have never been screened for cervical cancer or who have not had a Pap test in the past 5 years.
- ◆ A minimum of **75%** percent of all NBCCEDP reimbursed mammograms should be provided to program-eligible women who are 50 years of age and older.



Priority Populations

- ◆ Priority populations include:
 - Older women for breast screening,
 - Women rarely or never screened for cervical cancer, and
 - Racial and ethnic minority women.
 - Oregon includes lesbian and women with disabilities



What is critical to achieving a successful cancer screening program?

Data, monitoring, & continuous quality improvement throughout!



Data Quality Indicator Guide (DQIG)

- ◆ The DQIG contains data from the final analytic file with duplicates removed. The tables compare demographic, screening, and diagnostic data.
- ◆ This report is useful for a comprehensive review of both data and service quality, and to compare these data over time to identify trends and issues.



National Breast and Cervical Cancer Early Detection



Information about CDC's Cancer Prevention & Control Programs
<http://www.cdc.gov/cancer>



The findings and conclusions in this presentation are those of the presenter and do not necessarily represent the views of the Centers for Disease Control and Prevention.

