

Public Health Reporting

...for clinicians

By law,¹ Oregon clinicians must report diagnoses (confirmed or suspected) of the following infections, diseases, and conditions. Both clinical and lab-confirmed cases are reportable. The parallel system of lab reporting does not obviate the clinician's obligation to report. Some conditions (e.g., Uncommon Illnesses of Public Health Significance, animal bites, HUS, PID, pesticide poisoning, disease outbreaks) are rarely if ever identified by labs. In short, we depend upon clinicians to report.

Reports should be made to the patient's local health department² and should include at least the patient's name, home address, phone number, date of birth, sex, the diagnosis, and the date of symptom onset. Most reports should be made within one (health department) working day of the diagnosis, but there are a number of exceptions (noted with asterisks, *infra*).

Disease reporting enables appropriate public health follow-up for your patients, helps identify outbreaks, provides a better understanding of morbidity patterns, and may even save lives. If local health department staff are unavailable, a state epidemiologist is always on call (503/731-4024; after hours, 503/731-4030).

SPECIFIC ETIOLOGIES

Anthrax***
 Botulism***
 Brucellosis
 Campylobacteriosis
 Chancroid
 Chlamydia infection³
 Cryptosporidiosis
 Cyclospora infection
 Diphtheria***
 Escherichia coli (Shiga-toxigenic)⁴
 Giardiasis
 Gonorrhea
 Haemophilus influenzae**
 Hantavirus*
 Hepatitis A
 Hepatitis B
 Hepatitis C (new infections)⁵
 Hepatitis D (delta)
 HIV infection and AIDS⁶
 Legionellosis
 Leptospirosis*
 Listeriosis
 Lyme disease
 Malaria
 Measles (rubeola)**
 Meningococcal disease**
 Plague***
 Polio**
 Rabies**
 Rubella**
 Pertussis

Q fever
 Salmonellosis (including typhoid)
 Shigellosis
 Syphilis
 Taenia solium/Cysticercosis*
 Tetanus*
 Trichinosis
 Tuberculosis
 Tularemia
 Vibrio infection**
 Yersiniosis

OTHER CONDITIONS

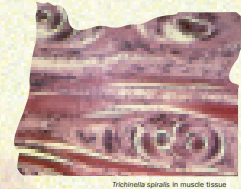
Animal bites
 any Arthropod-borne infection⁷
 HUS
 Lead poisoning*
 Marine intoxications***⁸
 any Outbreak of disease***⁹
 Pesticide poisoning**
 PID (acute, non-gonococcal)*
 any Uncommon illness of potential public health significance***¹⁰

TIMING OF REPORTS

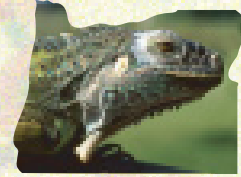
***Immediately—day or night
 **Within 24 hours
 *Within 1 week
 If unspecified, report within 1 working day

FOOTNOTES

- 1 ORS 433.004; OAR 333-018-0000 to 333-018-0015.
- 2 Refer to <http://www.oshd.org/acd/disrpt.htm> for a list of local health departments and more details about what to report.
- 3 STDs, trachoma, TWAR, psittacosis—all of 'em—even if they're renamed *Chlamydomydia*.
- 4 *E. coli* O157:H7 is the exemplar of this group.
- 5 Report only diagnoses of probable recent infection (e.g., post-transplant infections, persons with conversion of paired sera). Most cases are old or indeterminate; these are not reportable.
- 6 HIV/AIDS reports can be made directly to the state's HIV office (fax, 503/731-4425).
- 7 Including any of the scores of viral, bacterial, and parasitic infections typically spread by ticks, mosquitos, fleas, and their ilk (e.g., Lyme disease, malaria, ehrlichiosis, relapsing fever, typhus, babesiosis, dengue, yellow fever, Oroya fever, Colorado tick fever, West Nile fever, RMSF, SLE, WEE, EEE, filariasis, tsutsugamushi, Congo-Crimean hemorrhagic fever,...).
- 8 Paralytic shellfish poisoning, scombroid, domoic acid intoxication, ciguatera, etc.
- 9 Outbreaks are ≥2 cases from separate households associated with a suspected common source.
- 10 Don't make us list every exotic disease in the world. Ask yourself "Might there be public health implications from a case of possible Ebola, smallpox, melioidosis, or whatever?" If the answer is "yes"—or even "maybe"—then pick up the phone. There are no penalties for overreporting.



Trichinella spiralis in muscle tissue



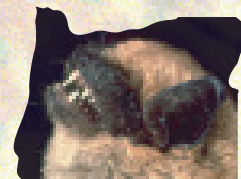
Most guinea pigs and other reptiles carry and excrete Salmonella



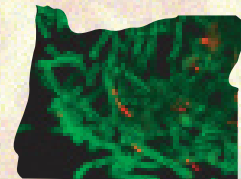
Widened mediastinum typical of inhalational anthrax



Smallpox—an "Unusual Disease of Public Health Significance"



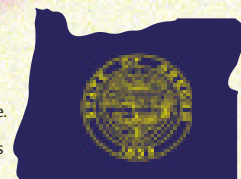
Big brown bats (Eptesicus fuscus) can carry rabies



BA of Bacillus anthracis cells and spores



A potential source of several enteric pathogens



State seal

Background: Entero spores

Power by O.C. P. Design

November 2002

DHS 0071 (0/02)

Oregon Department of Human Services

Office of Disease Prevention and Epidemiology • 503/731-4024 (phone) • 503/731-4798 (fax) • www.oshd.org/acd X DHS

Where to Make Disease Reports

Reports should be made to the patient's local health department. Reports on out-of-state residents can be made to the provider's local health department, or (preferably) directly to the Oregon Health Division (phone 503/731-4024; fax 503/731-4798). The following list—accurate on July 13, 2004—is provided for your convenience. Phone and fax numbers (especially the latter) are subject to change. County names are fairly stable.

COUNTY	PHONE	FAX	ANIMAL BITES
Baker	541/523-8211	541/523-8242	541/523-8211
Benton	541/766-6835	541/766-6186	541/766-6841
Clackamas	503/655-8411	503/742-5389	503/655-8384
Clatsop	503/325-8500	503/325-8678	503/325-8500
Columbia	503/397-4651 x216	503/397-1424	503/366-3828
Coos	541/756-2020 x526	541/756-5466	541/756-2020 x519
Crook	541/447-5165	541/447-3093	541/447-8155
Curry	541/247-3300	541/247-5601	541/247-3300, 247-3242
Deschutes	541/322-7418	541/322-7465	541/388-6566
Douglas	541/440-3571	541/464-3914	541/440-3569
Gilliam	541/384-2061 (24 hr)	541/384-3121	541/384-2061
Grant	541/575-0429	541/575-3604	541/575-0429
Harney	541/573-2271	541/573-8388	541/573-2271
Hood River	541/386-1115	541/386-9181	541/386-1115
Jackson	541/774-8211	541/774-7977	541/776-7206
Jefferson	541/475-4456	541/475-0132	541/475-4456
Josephine	541/474-5325	541/474-5353	541/474-5325
Klamath	541/882-8846	541/885-3638	541/883-1122
Lake	541/947-6045	541/947-4563	541/947-6045
Lane	541/682-4041	541/682-2455	541/682-4480
Lincoln	541/265-4112	541/265-4945	541/265-4127
Linn	541/967-3888	541/924-6911	541/967-3821
Malheur	541/889-7279	541/889-8468	541/473-5186
Marion	503/588-5342	503/566-2920	503/588-5346
Morrow	541/676-5421	541/676-5652	541/676-5421
Multnomah	503/988-3406	503/988-3407	503/988-7387
Polk	503/623-8175	503/831-3499	503/623-9237
Tillamook	503/842-3912	503/842-3983	503/842-3909
Umatilla	541/278-5432	541/278-5433	541/278-5432
Union	541/962-8865	541/963-0520	541/962-8865
Wallowa	541/426-4848	541/426-3627	541/426-3627, 4848
Wasco-Sherman	541/506-2600	541/506-2601	541/506-2600
Washington	503/846-3594	503/846-3644	503/846-8722
Wheeler	541/763-2725	541/763-2850	541/763-2725
Yamhill	503/434-7483	503/434-7549	503/434-7483