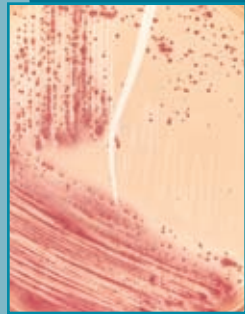


PUBLIC HEALTH REPORTING FOR LABORATORIES

Oregon Public Health Division



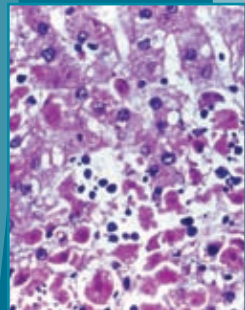
Escherichia coli



Mycobacterium tuberculosis



Botulism-contaminated jalapeño peppers



Human liver tissue infected with Ebola virus

By law,¹ Oregon labs must report all test results “indicative of and specific for” the following diseases, infections, microorganisms, and conditions. These results include microbiological culture, isolation, or identification; assays for specific antibodies; and identification of specific antigens, toxins, or nucleic acid sequences.

In general, reports must be made to the patient’s local health department² within one working day of the initial test report. Laboratories identifying possible agents of bioterrorism should contact their local health department and refer the isolates to the Oregon State Public Health Laboratory immediately, day or night. Reports must include the patient’s name and county of residence, the specimen collection date, lab test and result, and contact information for the ordering clinician and the lab. If available, the patient’s address, date of birth, and sex are much appreciated.

The lab that reports to the clinician is responsible for reporting, regardless of who actually does the test. For out-of-state residents, you may report directly to the state office; document in a log.

CONTACT YOUR LOCAL HEALTH DEPARTMENT

For a list of local health department phone numbers go to:
www.oregon.gov/DHS/ph/acd/reporting/counties.shtml

BACTERIA

Bacillus anthracis
Bordetella pertussis
Borrelia
Brucella
Campylobacter
Chlamydomphila psittaci
Chlamydia trachomatis
Clostridium botulinum
Clostridium tetani
Corynebacterium diphtheriae
Coxiella burnetii
Ehrlichia
Escherichia coli (Shiga-toxigenic)^{3,4}
Francisella tularensis
Haemophilus influenzae^{3,5}
Haemophilus ducreyi
Legionella
Leptospira
*Listeria monocytogenes*³
*Mycobacterium tuberculosis*³
Mycobacterium bovis
Neisseria gonorrhoeae

Neisseria meningitidis^{3,5}
Rickettsia
*Salmonella*³
*Shigella*³
Treponema pallidum
*Vibrio*³
*Yersinia*³

PARASITES

Cryptosporidium
Cyclospora
Giardia
Plasmodium
*Taenia solium*⁶
Trichinella

VIRUSES

Hantavirus
Hepatitis A⁷
Hepatitis B⁷
Hepatitis C
Hepatitis D (Delta)

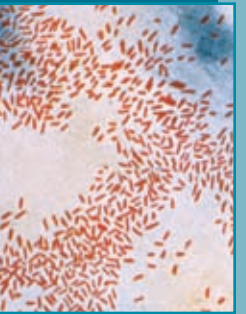
HIV Infection and AIDS
Measles (Rubeola)
Mumps
Polio
Rabies
Rubella
SARS-coronavirus
West Nile
Yellow Fever

OTHER IMPORTANT REPORTABLES

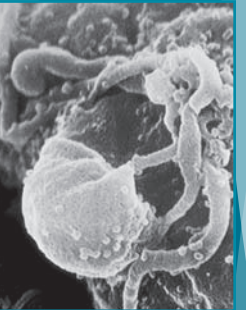
Any “uncommon illness of potential public health significance”²
Any outbreak of disease²
Any other typically arthropod vector-borne infection²
All blood lead testing results
All CD4 counts and HIV viral loads
Creutzfeldt-Jakob disease (CJD) and other prion illnesses

FOOTNOTES

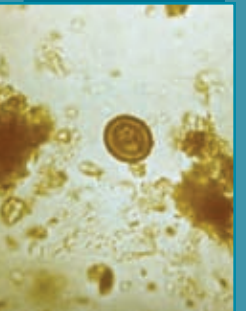
- 1 ORS 433.004; OAR 333-018-0000 to 333-018-0015.
- 2 Refer to www.oregon.gov/DHS/ph/acd/reporting/disrpt.shtml for a list of local health departments, reporting FAQs, and more details about what to report. When in doubt, report.
- 3 Isolates must be forwarded to the Oregon State Public Health Lab (phone, 503-229-5882).
- 4 Including all confirmed or suspected *E. coli* O157.
- 5 Report only isolates from normally sterile sites (e.g., neither sputum nor throat cultures).
- 6 Report cysticercosis and all undifferentiated *Taenia* sp., (e.g., eggs in stool O & P).
- 7 IgM positive HAV and HBV specimens must be forwarded to the Oregon State Public Health Lab.



Haemophilus influenzae



HIV-1 budding from cultured lymphocyte



Tapeworm egg



Child with rubella



DHS
Oregon Department of Human Services

Office of Disease Prevention and Epidemiology
971-673-1111 (phone) • 971-673-1100 (fax)
www.oshd.org/acd