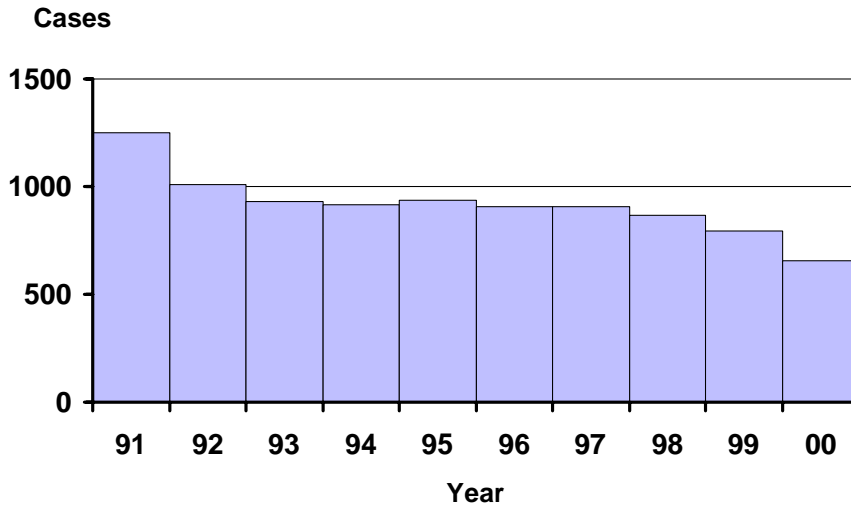
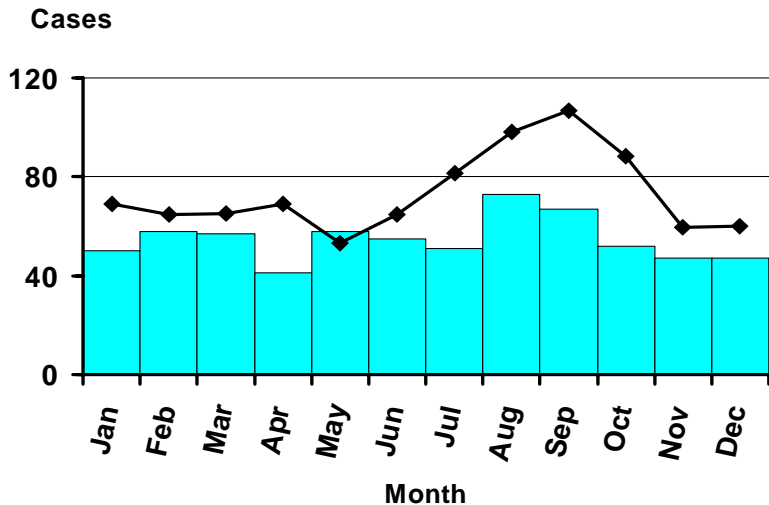


Giardiasis by Year Oregon, 1991-2000



The 657 reported cases for 2000 are a 20% decrease over 1999 and the lowest number of reported cases since 1981.

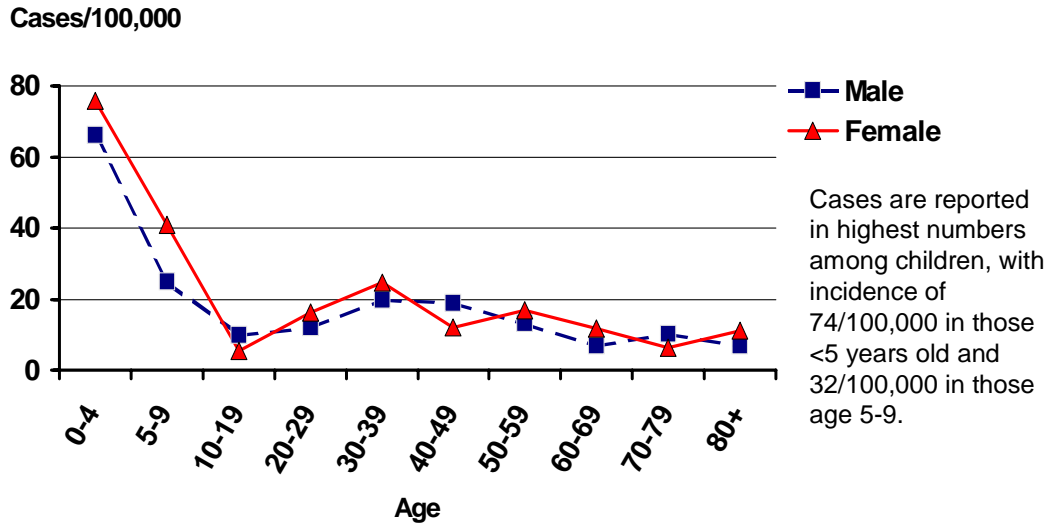
Giardiasis by Onset Month Oregon, 2000



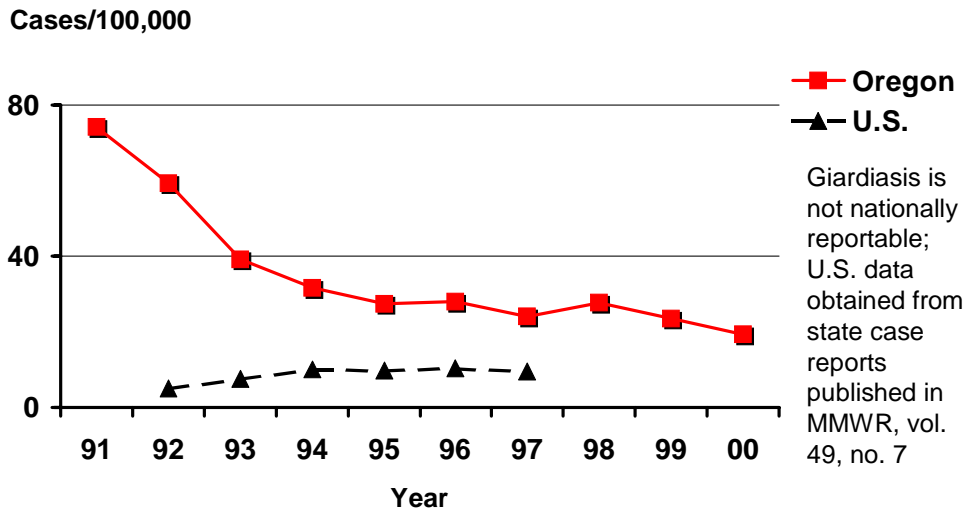
■ 2000
◆ Mean, 1995-1999

Three clusters of disease associated with school or day care were investigated in 2000.

Incidence of Giardiasis by Age and Sex Oregon, 2000



Incidence of Giardiasis Oregon vs. Nationwide 1991-2000



Incidence of Giardiasis by County Oregon, 2000

