

State of Oregon Department of Human Services (DHS)  
Oregon MMIS Replacement Project

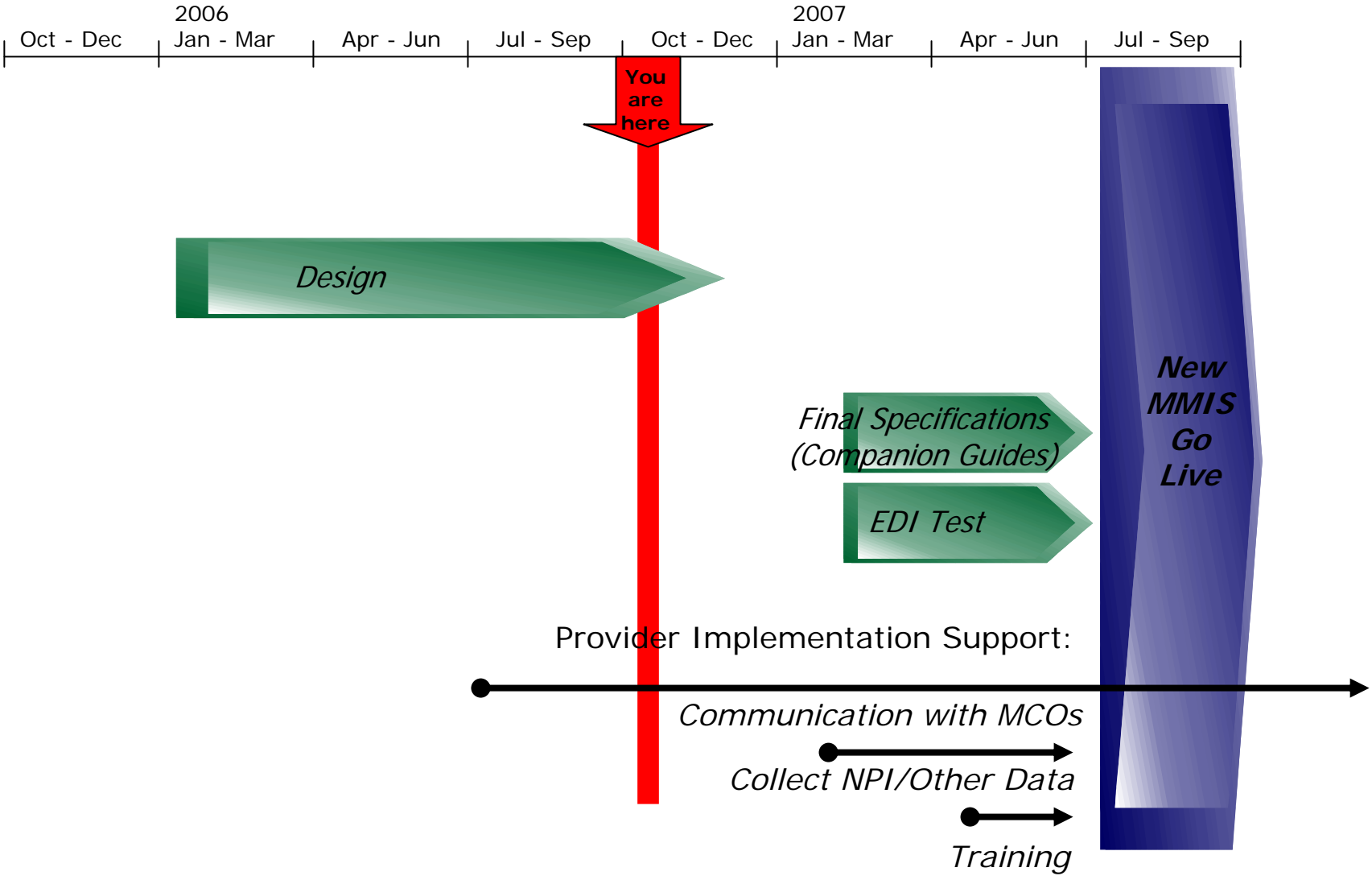
# Provider Implementation Support Plan Overview

## MMIS/MCO Workgroup

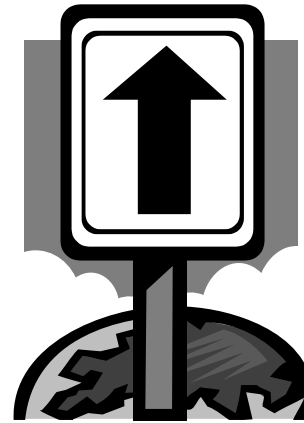
October 18, 2006

*Presented by Paul Combs, EDS Provider Implementation Lead*

# Oregon MMIS Project Schedule Overview- MCO Impacts

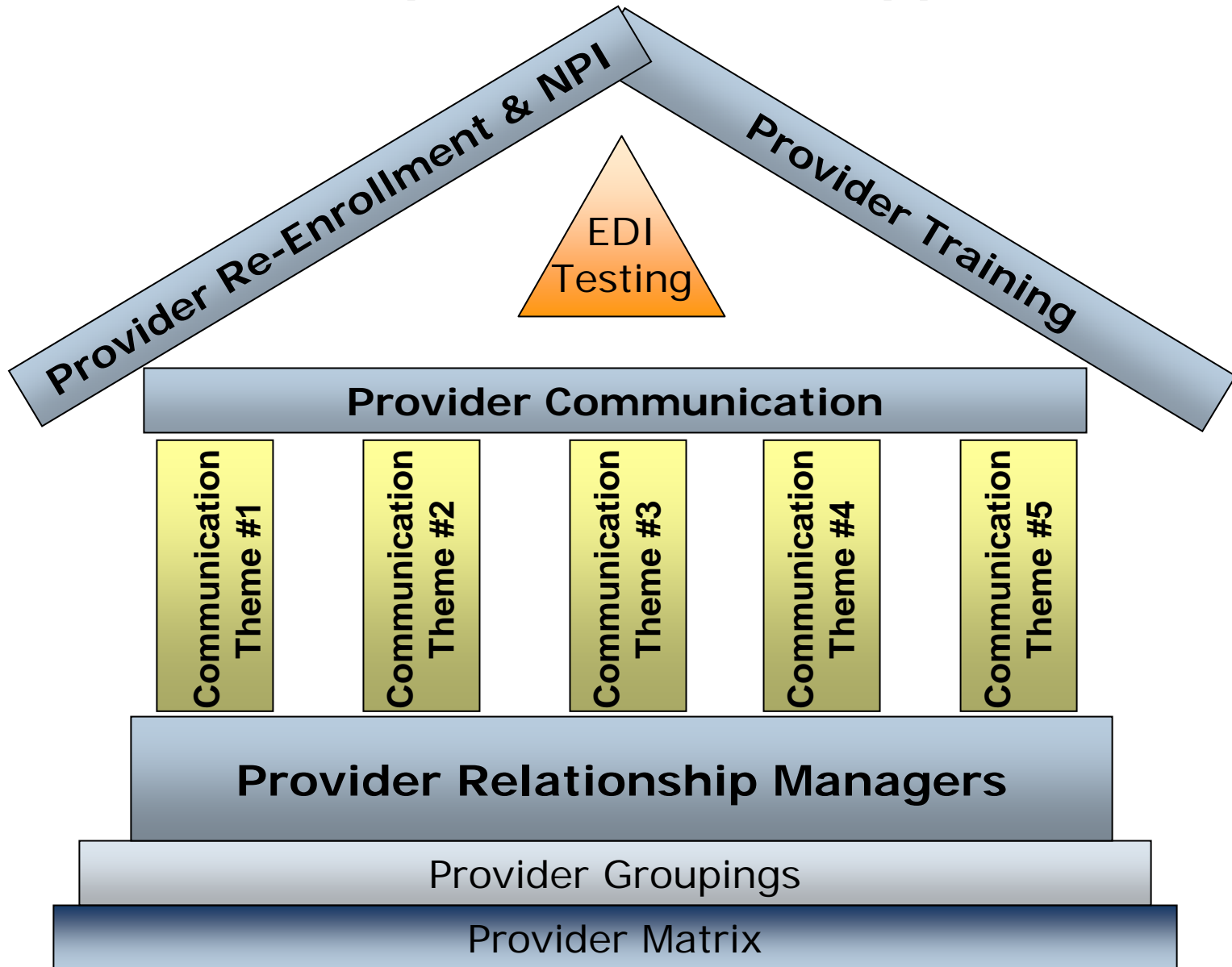


# Provider Implementation Support Plan



- Introduction:  
Participants in Plan Development included EDS, DHS, SPD, AMHD, DMAP, CAF
- Plan Purpose:  
To provide a roadmap for DHS to facilitate the transition of Oregon Medicaid Providers to the new MMIS through existing relationships and established partnerships.
- Plan Content:  
Provider Re-enrollment, Training, Communication, and Testing

# Provider Implementation Support Plan



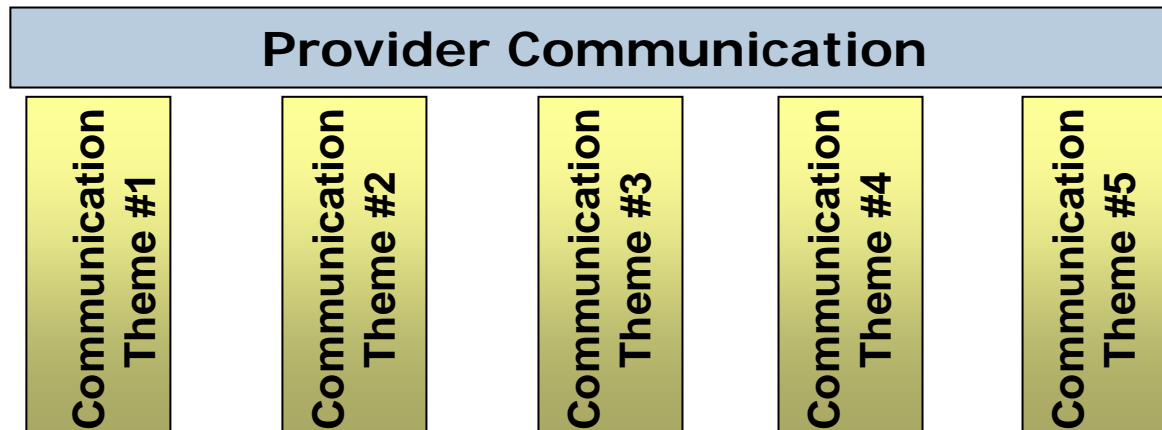
# Foundations of the Plan

- **Provider Matrix:** What is it and how was it developed?
- **Provider Groupings:** What are they and how were they determined?
- **Provider Relationship Managers:** Who are they and what is their role?



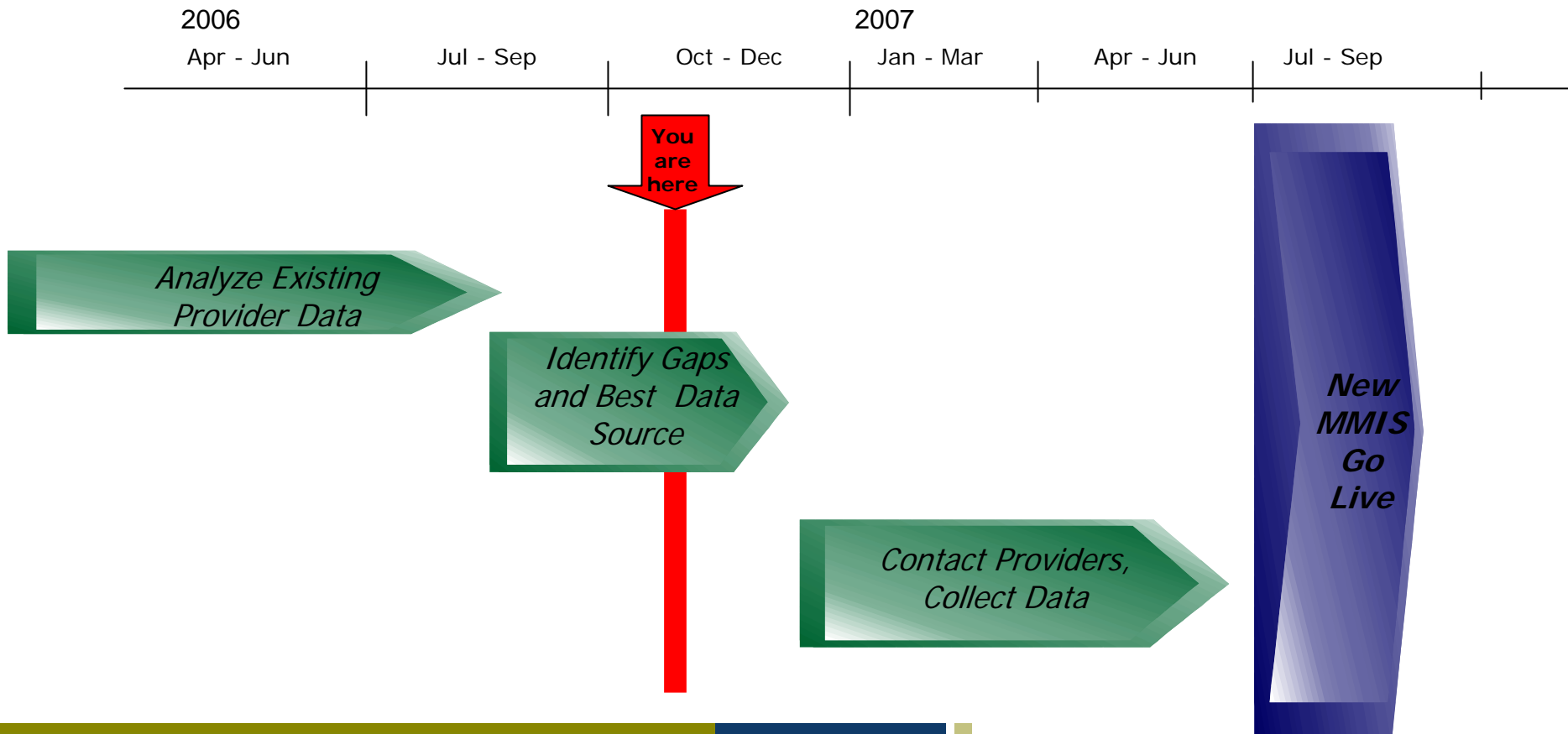
# Components of the Plan - Communication

- Communication Plan
- DHS / EDS Roles in Communication
- Interface with Other DHS Projects
- Communication Themes or Waves  
(Handout: Table 15 Communication Themes)



# Components of the Plan - Provider Re-Enrollment & NPI

- DHS / EDS Roles in Provider Re-Enrollment
- Based on Data Need – Conversion Analysis in Process
- Best Source for Data
- Least Disruption to Providers Possible



# Components of the Plan - Provider Training

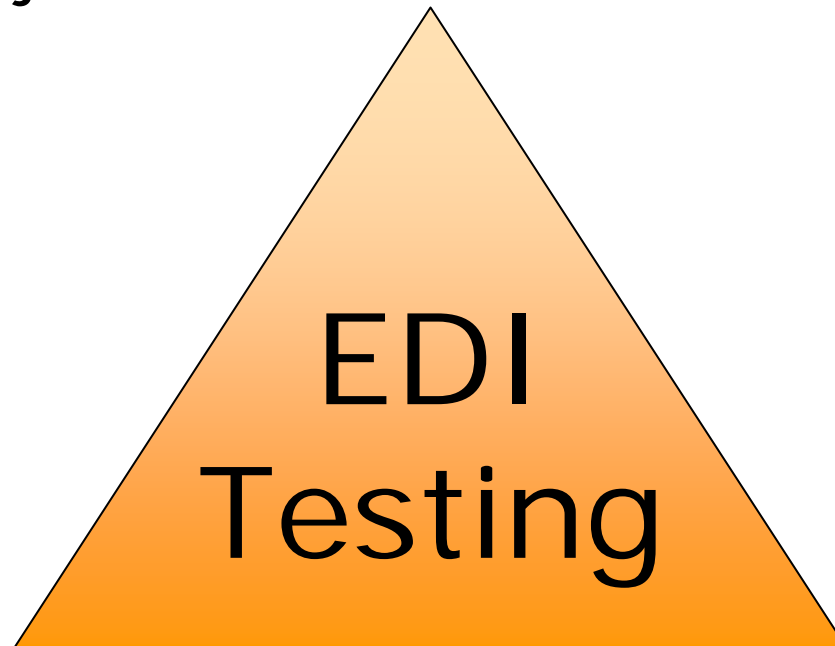
- DHS / EDS Roles in Provider Training
- Training Needs Identified By Provider Groupings
- Focus on New Functionality and Benefits
  - Especially Web Functionality
- Training Materials Adapted to the Audience



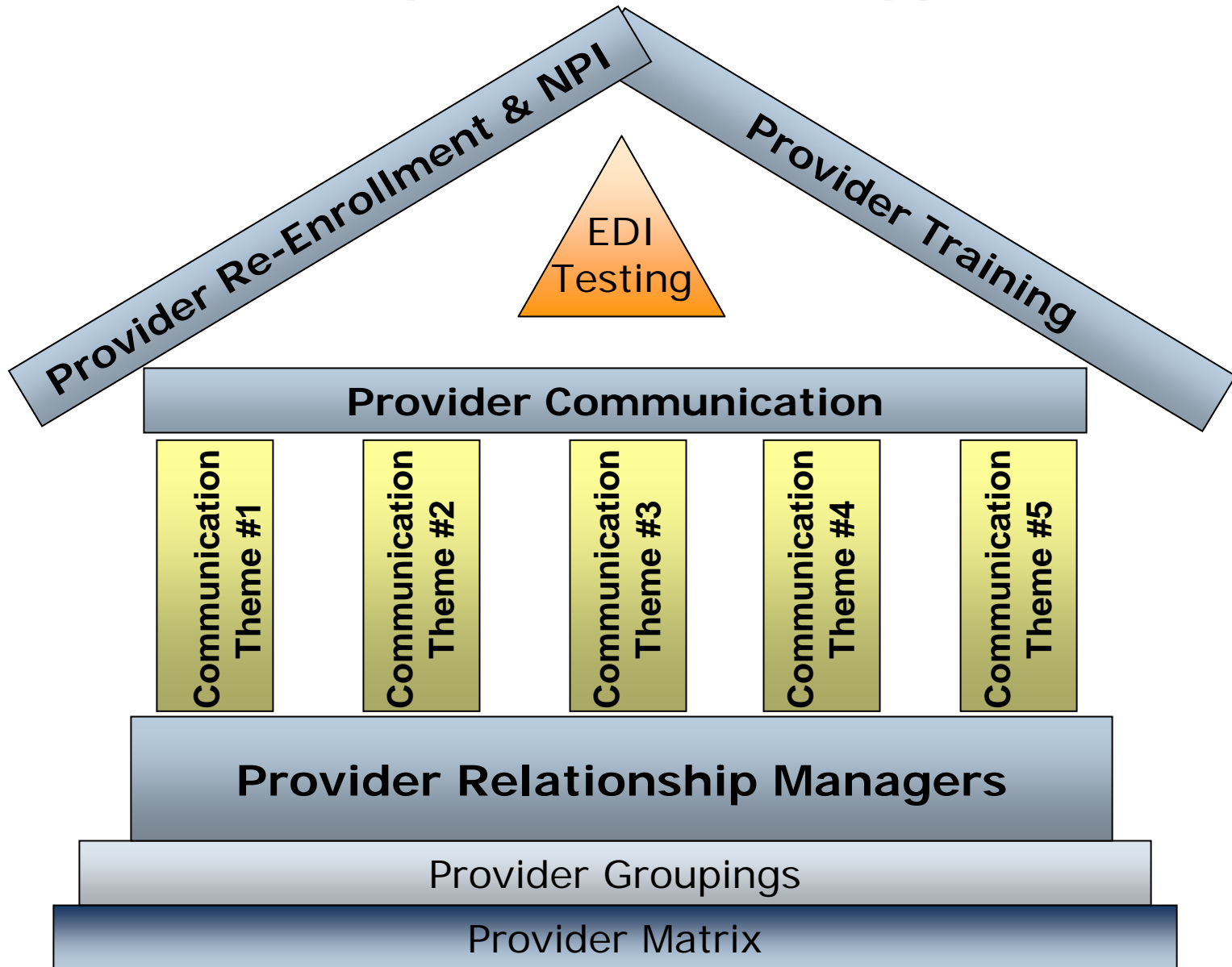
Provider Training

# Components of the Plan - EDI Testing

- DHS / EDS Roles in EDI Testing
- Required for Batch Electronic Billers
- Focus on Major Partners



# Provider Implementation Support Plan



# Provider Implementation Support Plan - Summary

- Plan Purpose:  
To provide a roadmap for DHS to facilitate the transition of Oregon Medicaid Providers to the new MMIS through existing relationships and established partnerships.
- As MCOs, your partnership is essential to the successful execution of this plan.