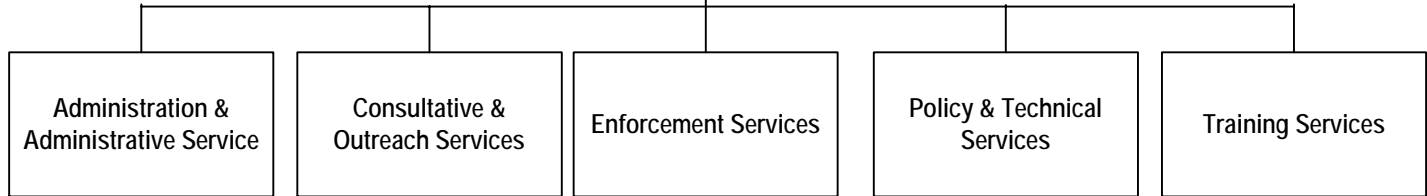


# OCCUPATIONAL SAFETY & HEALTH DIVISION

**Administrator**  
 Michael Wood  
**Deputy Administrator**  
 Vacant



	2005-07	2007-09
Positions	14	12
FTE	14.00	12.00

- ♦ Provide central business support to Oregon OSHA program activities
- ♦ Offer informal dispute resolution to employers cited for safety and health violations

	2005-07	2007-09
Positions	44	44
FTE	44.00	44.00

- ♦ Help create safer places of employment by working with employers and encouraging them to participate in Oregon OSHA's voluntary programs
- ♦ Help employers achieve self-sufficiency in managing their safety and health programs
- ♦ Work with professional associations to host and promote conferences, advancing the practice of workplace safety and health

	2005-07	2007-09
Positions	142	129
FTE	142.00	129.00

- ♦ Help employers create safer workplaces by:
  - Inspecting worksites for safety and health violations
  - Conducting fatality and accident investigations
  - Offering pre-job compliance conferences and hazard abatement assistance
  - Providing compliance assistance during and after inspection
  - Investigating complaints, fatalities, and other workplace accidents

	2005-07	2007-09
Positions	13	26
FTE	13.00	26.00

- ♦ Help employers understand and consistently apply rules and standards to achieve safer workplaces
- ♦ Outreach to employers, employees with Oregon OSHA videos, training materials, and safety and health publications
- ♦ Involve stakeholders in rules and standards development
- ♦ Provide information to the public about Oregon OSHA's programs, resources, publications, services on the Web site and in CD ROM format
- ♦ Provide leadership in achieving Oregon OSHA's mission through planning, policymaking, and stakeholder involvement

	2005-07	2007-09
Positions	16	14
FTE	16.00	14.00

- ♦ Train employers in simple ways to provide a safe and healthy workplace
- ♦ Support employers' efforts by offering on-site safety and health training and statewide workshops

Oregon OSHA	
2005-07 Approved	2007-09 Requested
229 Positions	225 Positions
228.25 FTE	225.00 FTE
\$39,331,764	\$43,273,266

# OCCUPATIONAL SAFETY & HEALTH DIVISION

## Mission

The mission of the Occupational Safety and Health Division (Oregon OSHA) is to advance and improve workplace safety and health for all workers in Oregon.

By fulfilling its mission, Oregon OSHA contributes to the reduction of workers' compensation costs to Oregon employers and thereby helps keep the overall cost of doing business low. The division's top priority is to use a full range of services, educational products, and regulations to achieve the lowest possible rates of occupational injury, illness, and death.

## What we do

Oregon OSHA protects workers by reducing the risk of occupational injury, illness, and death through administration of the Oregon Safe Employment Act (OSEA), including adoption and enforcement of Oregon occupational safety and health standards.

## Program delivery

Oregon OSHA has regulatory authority over most Oregon employers. With this authority it inspects worksites for safety and health violations, focusing on high-hazard industries and places of employment where workers are more likely to be injured or exposed to health hazards. The division also investigates workplace fatalities and major accidents, and responds to safety and health complaints.

In May 2005, Oregon OSHA became the 17<sup>th</sup> state to receive Final (18e) determination from Federal OSHA. This means that almost all private and state and local government employers are now under the sole jurisdiction of Oregon OSHA, as a state occupational safety and health plan.

Oregon OSHA's nonregulatory services include consultation, training, and technical services for employers and employees, and voluntary safety and health recognition programs for employers that have become self-sufficient in effectively managing safety and health within their organizations.

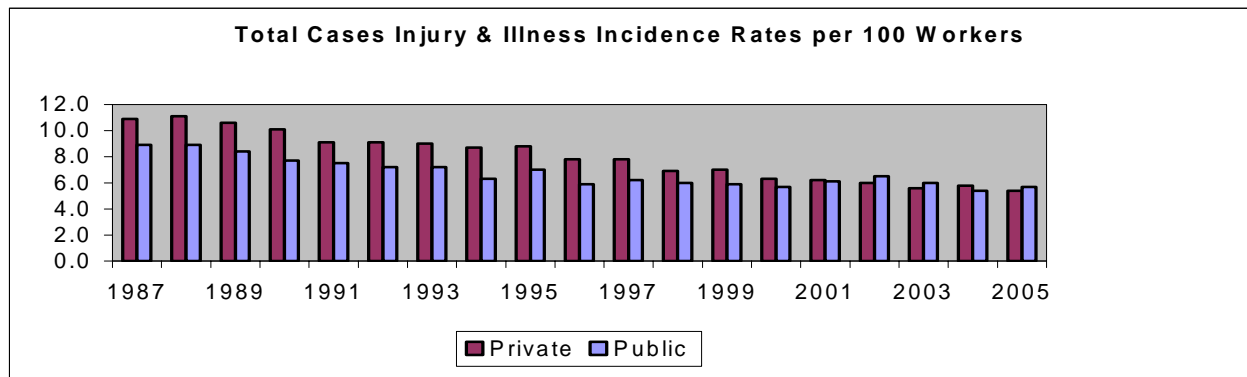
The table below reflects trend data on fatalities, injury and illness rates, and Oregon OSHA workload statistics.

	1998	1999	2000	2001	2002	2003	2004	2005	2006
Total case incidence rate per 100 (CY)	6.9	7.0	6.3	6.2	6.0*	5.6	5.8	5.4	N/A
Accepted workers' comp. fatal claims (CY)	52	47	45	34	52	41	46	31	N/A
Consultations provided (CY)	2,050	2,128	2,505	2,828	2,457	2,063	2,094	2,124	2,281
Total attendance at training sessions (CY)	15,494	27,104	19,069	26,478	15,844	26,290	20,047	26,253	22,624
Worksite inspections conducted (FFY)	5,172	5,435	5,069	5,370	5,642	5,355	5,097	4,890	4,863

\* Data from 2002 forward is not strictly comparable to previous years due to federal changes in the recordkeeping standard.

N/A: Not available

# OCCUPATIONAL SAFETY & HEALTH DIVISION



## Accomplishments, 2005-2007

- 1. Small businesses have an easier time following Oregon OSHA regulations. For example, the division:**
  - Provided safety and health training designed specifically for small businesses to accommodate the time constraints and the availability of small-business owners.
- 2. Employees, employers, and the general public have benefited from customer service improvements made by Oregon OSHA. The division:**
  - Continued to link the Oregon OSHA Web site to others throughout the U.S. to provide important information about new- and young-worker training, bio-terrorism, ergonomics, Spanish language resources, and other safety and health topics.
  - Organized and cataloged reference materials in the Resource Center and in the five field offices throughout the state for better accessibility by the public.
  - Updated and conducted surveys to obtain consistent feedback about the quality of Oregon OSHA services and interactions with Oregon OSHA staff. The division used the feedback to improve customer service and training.
- 3. Public and private partnerships give Oregon OSHA increased expertise to share with customers. The division:**
  - Continued to work with the construction industry to provide hazard-specific training to contractors through the Joint Emphasis Program, a cooperative effort among management, labor, and Oregon OSHA. To date, training modules have been developed and delivered on scaffold safety, silica hazards on construction sites, health hazards in construction, respiratory protection, ergonomics, and falls.
  - Participated as a partner with safety and health associations throughout Oregon to produce 13 conferences. Two of the most significant were the Ergonomics Conference, in partnership with the Oregon Coalition of Health Care Ergonomics, and the Governor's Occupational Safety and Health (GOSH) conference, in partnership with the Columbia-Willamette Chapter of the American Society of Safety Engineers. The Governor's Occupational Safety and Health Conference, held in 2005, drew 1,900 attendees.
  - Conducted regular meetings with a "Partnership Committee," consisting of Oregon business and labor leaders. This committee provides advice to Oregon OSHA on policy and acts as a sounding board on a variety of OSHA-related issues.

# OCCUPATIONAL SAFETY & HEALTH DIVISION

---

## **4. Stakeholders and the public have many opportunities to help shape Oregon OSHA programs. The division:**

- Worked with employer and employee representatives to address ergonomic issues in Oregon. The two areas of greatest concern were health care and construction.
- Focused the work of the Forest Activities Standards Advisory Committees (with members from business, labor, and government) on issues such as wild land firefighting, dangerous trees, and tree planting.
- Continued to meet with stakeholder groups including a wide range of trade associations; attended labor council meetings; provided speakers to business forums, association meetings, employer staff meetings, and professional conferences. The goal of the meetings is to build relationships and encourage employers to be self-sufficient in managing their workplace safety and health.

## **5. More Oregon employers are self-sufficient when it comes to workplace health and safety. To reach that achievement, Oregon OSHA:**

- Continued to aggressively promote participation in the Safety and Health Achievement Recognition Program (SHARP) and Voluntary Protection Program (VPP). Twenty more Oregon employers joined SHARP and VPP. The addition brings the total number of worksites directly covered by the programs to 120. These two programs help employers develop and operate an effective safety and health program that ultimately lets them become self-sufficient in creating and maintaining safer workplaces.
- Piloted and implemented a “graduation” program for employers that have been in the SHARP program for five or more years and have demonstrated their commitment to worker safety and health. Since the graduation program began in January 2005, 58 employers have achieved graduate status.

## **6. Businesses have more education and training opportunities on improving workplace safety and health. Oregon OSHA:**

- Continued the Safety for Small Business initiative, which provides public education and online materials focused on the needs of small businesses, highlighting the importance of keeping a written hazard communication plan and developing a viable safety committee or alternative.
- Expanded the bilingual training PESO program (Spanish/English) to include modules addressing the following topical areas: accident investigation; cultures, languages and safety; excavations; fall protection; hazard communication; hazard identification; hazardous energy control; industrial vehicles; machine safeguarding; manual material handling; occupational health; portable ladders; safety committees; and scaffolds.
- Introduced a public education workshop to assist employers with creating effective motor vehicle and fleet safety programs. Motor vehicle deaths are responsible for one-quarter of work-related deaths in the U.S. More than 100 Oregon workers participated in the workshop during 2005.

# OCCUPATIONAL SAFETY & HEALTH DIVISION

---

## 7. Oregon employers work with Oregon OSHA proactively to improve safety and health in the workplace. The division:

- Completed the fourth year of promoting “Safety Break for Oregon.” Once a year, on the second Wednesday in May, Oregon OSHA encourages employers and communities to promote and celebrate job safety with their employees.
- Continued “Safe Jobs, Smart Business,” an initiative promoting workplace safety that encourages employers to concentrate on the most prevalent hazards to keep accident rates low as Oregon’s economy grows.
- Implemented a Local Emphasis program targeting employers with a high injury claims rate within their industry for inspection. Inspections provided an opportunity to educate employers in high-risk occupations about incident prevention, identify hazards, and promote training and consultation services available to assist employers.
- Conducted outreach to educate employers and workers about the hazard posed by overexposure to ultraviolet (UV) light from broken metal halide lamps after more than 50 school district employees reported eye and skin irritation or sought medical attention due to possible UV light exposure.

## Anticipated results, 2007-2009

- Improve employer access to and understanding of safety and health codes by providing more direct Web access, writing rules more clearly, and using common industry terminology.
- Improve safety and health self-sufficiency in small businesses throughout Oregon by offering and more effectively marketing focused consultation, training, and education services.
- Implement legislation proposed during the 2007 session that would make it easier for small employers to follow Oregon OSHA safety committee rules without reducing worker protection. The legislation would allow small employers to use less-formal safety meetings to comply with the safety committee requirement.
- Identify the causes of workplace fatalities and develop strategies to prevent them. For example, Oregon OSHA will work with Oregon employers and their employees to reduce workplace fatalities due to motor vehicle accidents – currently the largest single fatal workplace injury event in the United States and in Oregon.
- Reduce the continued high rate of injuries within the health care industry through expanded partnerships, awareness, and ergonomic consultation services.
- Aggressively market Oregon OSHA’s safety and health recognition programs (VPP and SHARP) and educate employers about the bottom line value of employee safety and health.
- Focus educational outreach on small businesses and Oregon industries with the greatest growth potential in the economic rebound to maintain the downward trend in injuries and illnesses. Outreach to employers and workers by partnering with business and labor and demonstrating how safety and health management can change the workplace culture. Use Oregon OSHA training and outreach to promote safety of new workers. Train more than 30,000 employers and employees through workshops and custom training.
- Work with employer safety committees to identify and correct workplace hazards and find solutions to workplace safety and health problems.
- Make safety and health resources easier to access through Web and automated processes, particularly for small employers, who make up more than 80 percent of the state’s businesses.

# OCCUPATIONAL SAFETY & HEALTH DIVISION

---

- Conduct at least 10,000 safety and health inspections and 4,000 consultations, while enhancing the effect of these on-site activities on worksite conditions and practices.
- Identify areas in which regulations and regulatory processes can be streamlined, including streamlining the way the division provides enforcement and consultation reports so that employers receive the needed information more quickly.
- Collect customer feedback and respond with appropriate program or process changes.
- Involve stakeholders in the development of rules and standards.

## Key performance measures and related outcomes

As noted above, although Oregon OSHA tracks a number of specific performance measures and other key outcomes, there are two fundamental indicators of progress toward fulfillment of the division's mission:

- *Reduction in workplace injury, illness, and fatality rates.* Rates have reached record lows during the biennium.
- *Reduction in workers' compensation premium costs to employers.* Costs in Oregon are 42<sup>nd</sup> in the nation as of 2006, an improvement of seven steps from 2002.

In addition to these, Oregon OSHA uses the following as indicators of progress toward its overall goal of continued reduction in injuries, illnesses, and fatalities.

- *Number of Oregon employers that have voluntarily implemented outstanding safety and health programs and as a result are members of one of Oregon OSHA's two self-sufficiency programs (Voluntary Protection Program and Safety and Health Achievement Recognition Program).*

2007 target: 110 employers participating in one of Oregon OSHA's two voluntary safety and health programs.

Progress report: As of December 2006, there were 120 Oregon employers participating in one of the two voluntary safety and health programs. The target for 2009 is 140.

- *Percent of customer service survey respondents rating their experience with Oregon OSHA at the highest possible rating.*

2007 target: 69 percent of survey respondents rate their experience with the department at the highest possible rating.

Progress report: As of June 2006, 71.3 percent of consultation survey respondents rated their experience with Oregon OSHA at the highest possible rating and 70.6 percent of enforcement survey respondents rated their experience with Oregon OSHA at the highest possible rating.

- *Percent of Oregon OSHA consultations where the consultant works actively with the employer's safety committee.*

2007 target: 88 percent of Oregon OSHA consultations include work with the employer's safety committee.

Progress report: As of June 2006, 87.2 percent of Oregon OSHA consultations included work with the employer's safety committee.

# OCCUPATIONAL SAFETY & HEALTH DIVISION

## Governor's Recommended Budget

	Request	FTE
<b>2005-07 Legislatively Adopted Budget</b>	\$ 39,331,764	229.00
<b>Base Budget Adjustments</b>		
Net Cost of 2005-07 Position Actions:		
Administrative, Biennialized E-Board, Phase-outs	\$ 2,273,159	(4.00)
Estimated Cost of 2007-09 Merit Increase	\$ 366,407	-
<b>Subtotal: 2007-09 Base Budget</b>	<b>\$ 41,971,330</b>	<b>225.00</b>
<b>Essential Package 010—Non-PICS Adjustments</b>		
Vacancy factor adjustment.	\$ 148,284	-
Non-PICS adjustments for unemployment, overtime, temporaries, and mass transit taxes calculated as .006 of base salaries and wages.	\$ 29,183	-
<b>Essential Package 021/022 - Phase in/out</b>	\$ -	-
<b>Essential Package 030—Cost Adjustment for Inflation and Price List</b>		
Cost of Goods & Services Increase/(Decrease)	\$ 361,807	-
Increase/shift in State Government Service Charges.	\$ 762,662	-
<b>Essential Package 060 - Technical Adjustments</b>	\$ -	-
<b>Subtotal: 2007-09 Essential Budget Level</b>	<b>\$ 43,273,266</b>	<b>225.00</b>
<b>Policy Packages</b>	\$ -	-
<b>Total: 2007-09 Governor's Recommended Budget</b>	<b>\$ 43,273,266</b>	<b>225.00</b>