

OSPA Datamart

Creating an Open Catalog Extension (OCE) in Hyperion Version 8.X

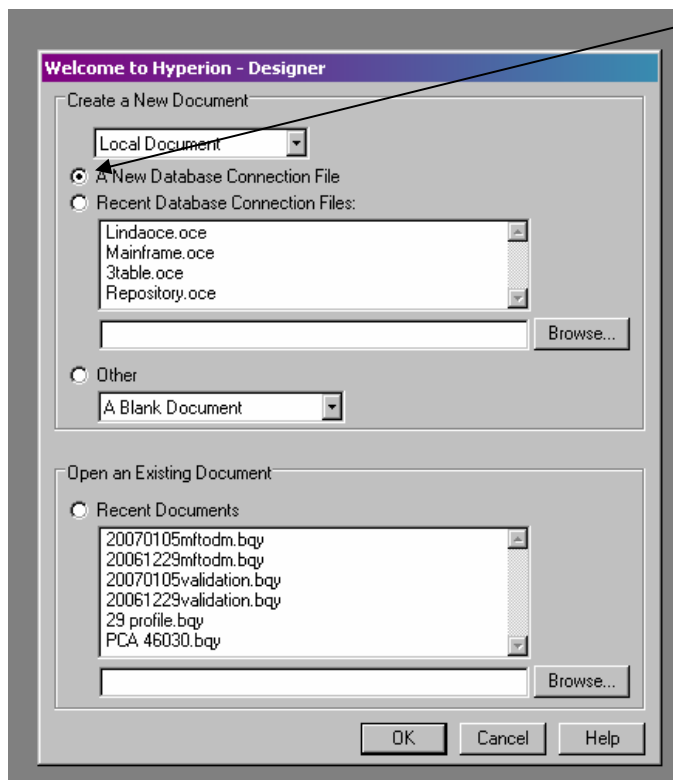
These are the detail instructions to be used to set up your Hyperion OCE. The OCE is simply a definition of the connection required to view a particular database. In these instructions, you will be connected to the OSPA Datamart only. An OCE already set up according to these instructions is also available.

Step 1: Open Hyperion

You should see a "Welcome to Hyperion" dialog box.

Select: "A New Database Connection File"

Click: "OK"



Step 2: This takes you to the "Database Connection Wizard".

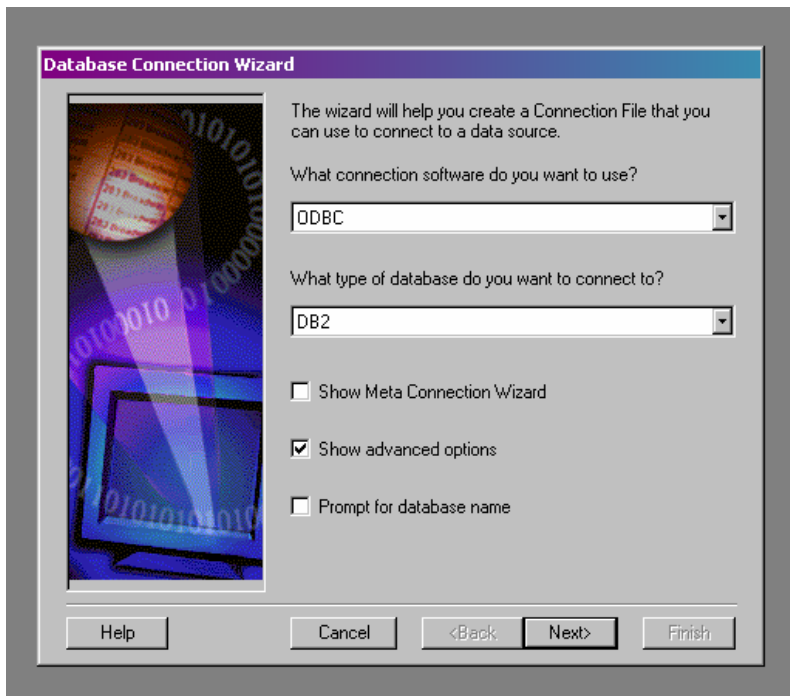
Select: "ODBC" from the-What connection software do you want to use?

Select: "DB2" from the-What type of database do you want to connect to?

Check the following box:

1. **Show advanced options**

Click: "Next"



Statewide Accounting and Reporting Services

Step 3: In the box labeled "User Name" type your **Datamart ID** (looks like your RACF ID)

In the box labeled "Password" type your **Datamart Password**, not your SFMA password.

From the dropdown list select: **"SFMSP"**

Click: **"Next"**

Database Connection Wizard

Connect to the data source.
Enter your user name, password, and select your IP address or database host.

User Name:

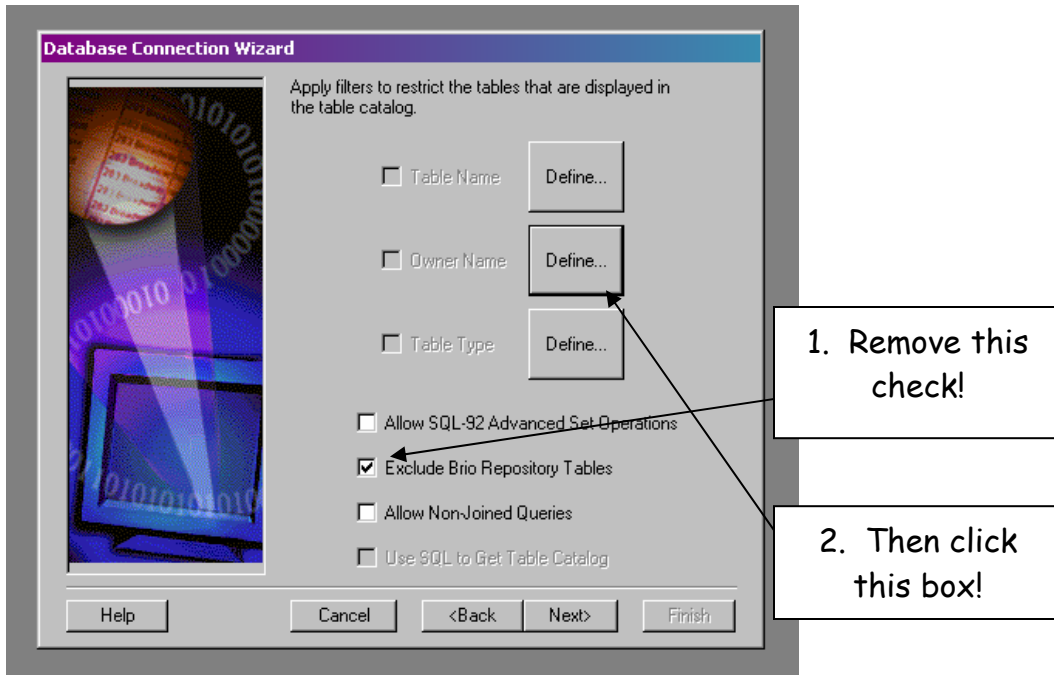
Password:

Host:

Help Cancel <Back Next> Finish

Step 4: Remove the check next to "Exclude Brio Repository Tables"

Click on the middle "Define" button next to Owner Name



Step 5: This takes you to a screen where you can choose the tables you want in your OCE.

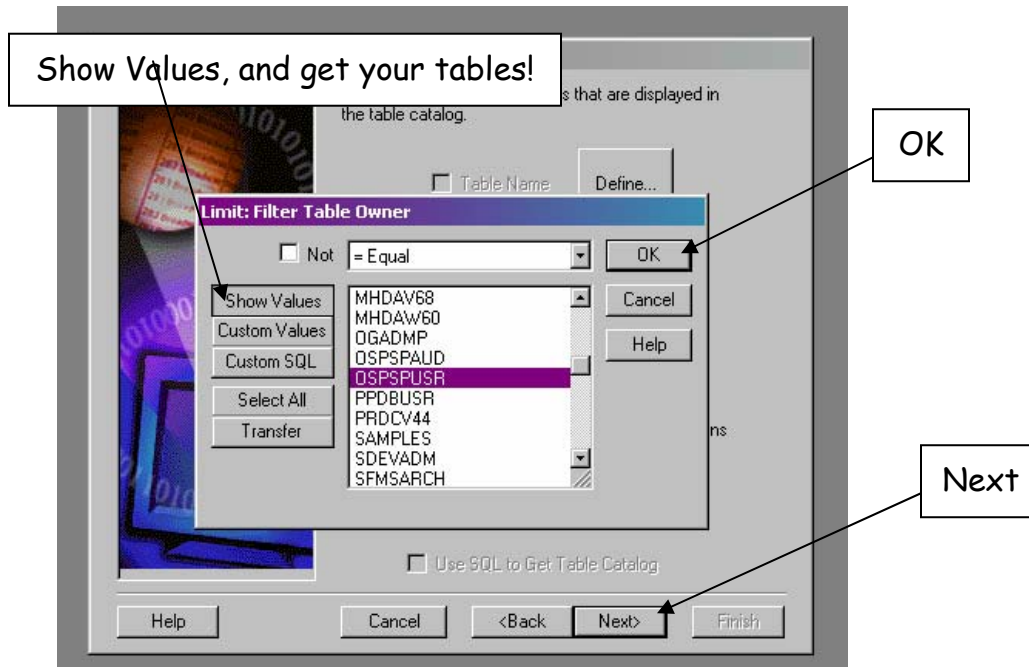
Select: **"Show Values"**

Then, you can select the table names you want. You can select more than one by using "CTRL+Click".

Select the following table:

- **"OSPSPUSR"**

Click: **"OK"**, then click **"Next"** to continue



Statewide Accounting and Reporting Services

Step 6: Leave the next two screens just as they appear below.
Click: **"Next"** to continue on both screens.

Database Connection Wizard

Choose the data retrieval method.

Retrieve data as Binary

Retrieve data as Strings

Time Limit Minutes

Auto Commit after Select

Save OCE Without User Name

Use Quoted Identifiers

Allow Change Database at Logon

Server Dates...

Help Cancel <Back Next> Finish

Database Connection Wizard

Use large buffer query mode

Packet Size setting, 512 *

Oracle buffer size

Disable asynchronous processing

Retain Date Formats

Disable Transaction Mode

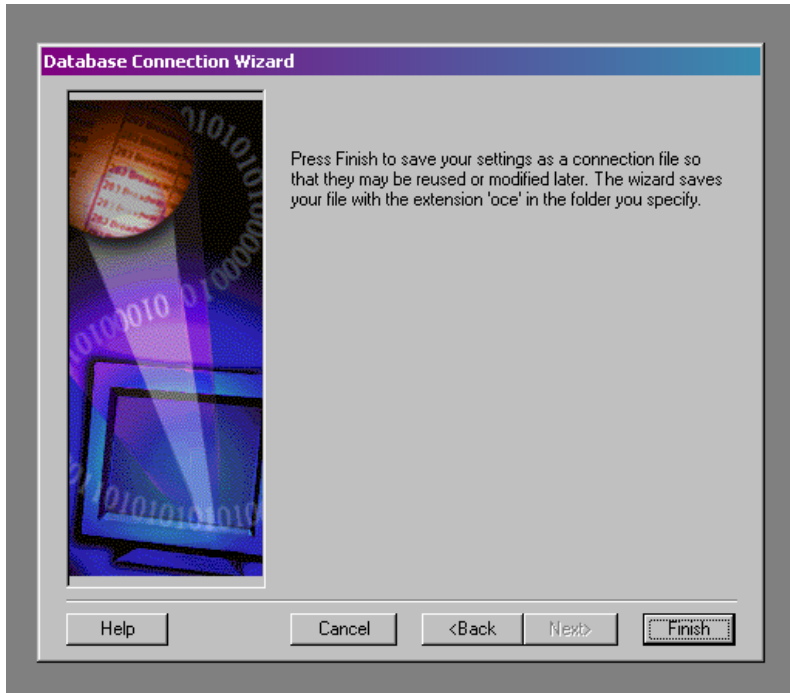
Use outer join operator on limits

Use ODBC outer join syntax on limits

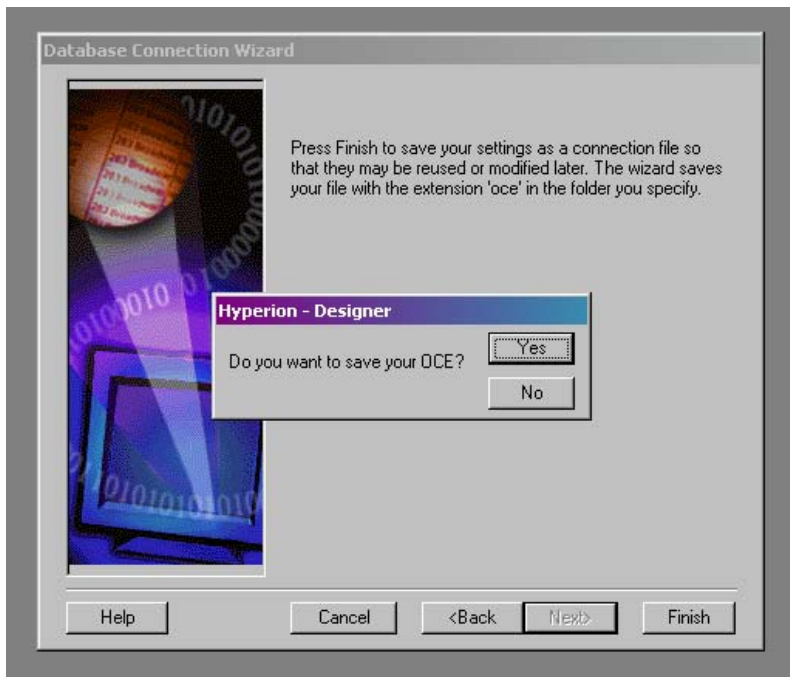
Use ODBC outer join escape syntax

Help Cancel <Back Next> Finish

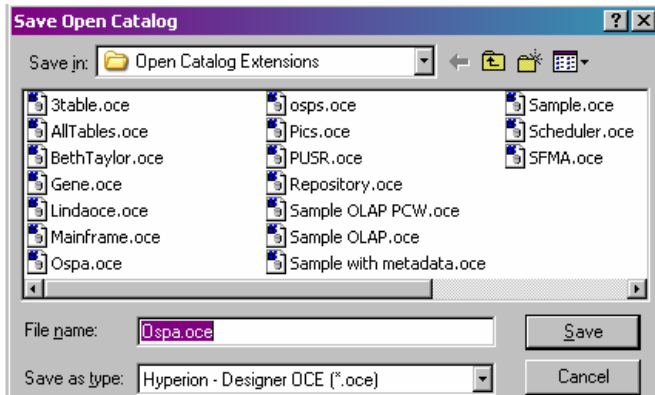
Step 7: Select: **"Finish"** starting the completion of this process.



Step 8: Select: **"Yes"** to save your OCE.



Step 9: Give your OCE a name in "File Name" field. Click: "OK" to save your OCE.



Have fun working in Hyperion! You are now ready to create queries and run reports.

If you have any questions, please call Linda Tullis at 503-373-7277 Ext 281 or email at linda.tullis@state.or.us