

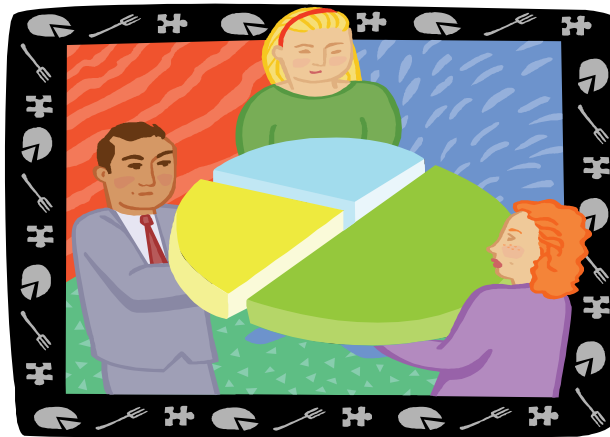
Repository Report Focus Group

What is the Repository?

The Repository is an efficient way to manage and distribute reports for users. Standardized reports can be posted to the Repository. Also, reports can be shared by being posted to the Repository. This allows the users to capture, make modifications, and use the report as their own. Currently the Repository is home to 8 reports of agency balance sheets and operating statements. Also, agencies have access to SEFA reports through the Repository.

So, why should you be interested in the Repository? The Repository will become a store where you can shop for reports. The Repository will soon be divided out by subject matter with corre-

Why should I be interested?



Come have a piece of the pie!

sponding reports listed beneath.

The focus group will work on setting priorities for state reporting. Some of the areas in demand include: Budget vs. Actuals, Grant Reporting, Operating Statements, Capital Assets, A/R, and Payroll. The group will

focus its' efforts on sharing existing reports and creating new reports for users. The group will work on delivering training to users during Datamart User Group meetings.

Feel like contributing? Please contact Linda Tullis.

Oracle Purchases Hyperion for \$3.3 Billion

On March 1, 2007 Oracle Corp. announced their plans to purchase Hyperion for \$3.3 billion in cash. Oracle had a handful of market-leading Business Intelligence (BI) vendors to choose from, including Cognos Inc. and Business Objects SA. Oracle noted, Hyperion was the best fit for Oracle both in terms of products and company cul-

ture. Oracle also noted, adding Hyperion to the family makes it a best-of-breed player. This acquisition could start a "domino effect" in which the other large BI software vendors are also acquired. Hyperion says it has about 12,000 customers using its software and about 2,500 employees spread over 20 coun-

tries. It reported revenue of \$765.2 million for the fiscal year than ended June 30, 2006. Hyperion CEO Godfrey R. Sullivan addressed customers assuring them all existing contacts for support, professional services, and sales will remain the same as they have been. The deal is expected to be finalized in April 2007.

Inside this issue:

Repository Report Focus Group	1
Oracle Purchases Hyperion for \$3.3 Billion	1
Hyperion 411	2
Datamart Word Search	2
SCD Accounting Datamart Tables	2

Upcoming Events

- OSFA Conference
April 5, 2007
Salem Conference Center
- Datamart User Group Meetings:

All meetings held at:
L & I Building, Room 260

April 24, 2007
9 to 10:30

July 26, 2007
9 to 10:30

October 31, 2007
9 to 11
- Hyperion Basic Training
May 8, 2007
8 to 12 & 1 to 5

Statewide Accounting & Reporting Services
 State Controller's Division, DAS
 Linda Tullis, Datamart Business Analyst
 155 Cottage Street NE Phone: (503) 373-7277 Ext 281
 Salem, OR 97310 E-mail: linda.tullis@state.or.us
<http://oregon.gov/das/scd/sars>

Drilling into Data-You can drill on labels in a report to change the data viewed in the report.
Just select one or more labels from the same dimension-Right Click-Select "Drill Anywhere"-Select an Item
 The Drill Up feature allows you to return to the condensed version.
Right Click on expanded items-Select "Drill Up"

Adding Color to your Pivot-You can add color to your Pivot to enhance the appearance.
Select a report element-Go to the Formatting Toolbar-Select the "Line", "Fill", and/or "Text Colors" Icons

Creating Charts from Pivots-Use the Chart This Pivot option to automatically generate charts from Pivot reports.
Be on an active Pivot-Select "Insert" from the Menu Bar-Then, select "Chart This Pivot"

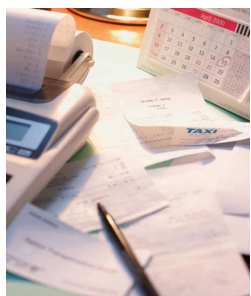
Hyperion 411

Datamart Word Search

G S F X P S N L Q S Q R V D R
 Z P J U U I M O D U E J R H E
 R O C B N C V D I P B O W P N
 E T H I S C L O O R W T O J I
 S L A V R K T S T S E A S X L
 U I R P F Y I I S Y K P C R T
 L G T V B T S A O T K C Y S U
 T H J R O V P M Q N R L E H O
 S T T R T A B L E D H O Y U U
 T E Y T R A M A T A D R P Z N
 A R K E E R T R O S E D T E Q
 L L D U C P E Z K U A O I W R
 S T I B R O C P Q T D U M K S
 T R A I N I N G E B L I I X C
 S L X L E C I S C H J N L H A

Chart	Datamart	Function	Hyperion
Limit	OCE	ODBC	ORBITS
Outliner	Password	Pivot	Query
Report	Repository	Results	Sort
Spotlighter	Table	Training	Updates

SCD Accounting Datamart Tables



There are two types of tables on the SCD Accounting Datamart: Financial and Profile. Financial tables contain financial information from SFMA such as

balances and transactional information. Profile tables provide titles for various data elements and serve as the accounting structure backbone. The financial tables consist of:

Accounting Event-These three tables (Active, All, & Archive) are the lowest level of detail in the Datamart. All other financial tables are summaries in some way of this information.

General Ledger Detail-This table summarizes GL balances and includes comptroller objects and agency objects.
General Ledger Summary-This table summarizes GL balances, but does not contain any object level detail.
YE General Ledger Detail & Summary-Both tables contain the same structure as listed above, but are only updated at year end.
Appropriation Financial-Mirrors the "62" screen on SFMA.
Contract Financial-Mirrors the "68" screen on SFMA.
Grant Financial-Mirrors the "66" screen on SFMA.
Project Financial-Mirrors the "80" screen on SFMA.
Receipt Extr Sum-Mirrors the "12/13" screen on SFMA.

Doc Financial-Mirrors the "64" screen on SFMA.
Arch Doc Financial-Mirrors the "64" screen on SFMA and contains archived data.
Payment Control-Mirrors the "47" screen on SFMA.
 The SFMA profile tables consists of a multitude of options dealing with some of the following categories:
Agency Codes
Agency GL and Objects
Budget and Comp Objects
Contracts and Project Numbers
D23 and GAAP Funds
Grant No, Object, and Phase
Index Numbers
Operator ID, TDate, and Org Codes
Program Codes
PCA's and Index Rel