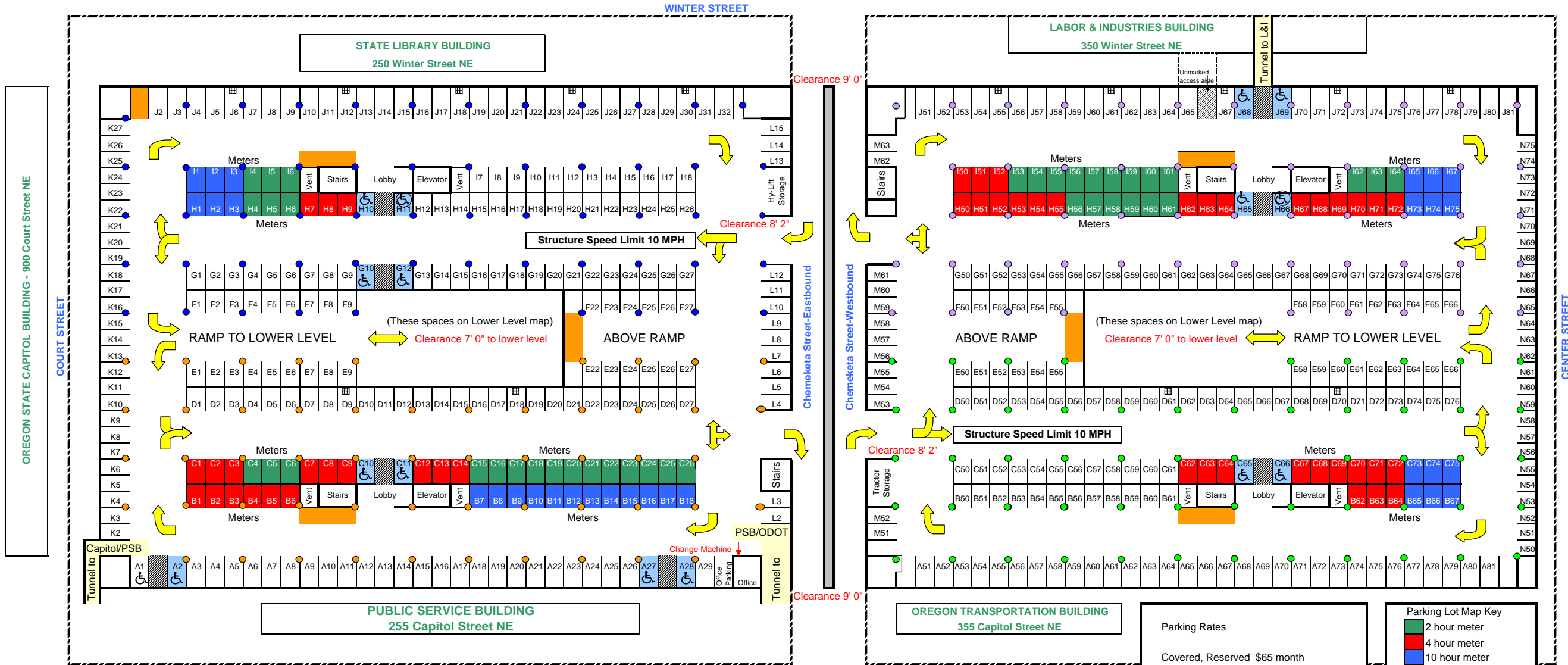
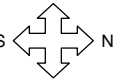


CAPITOL MALL PARKING STRUCTURE UPPER LEVEL - 444
900 Chemeketa Street NE

Parking Garage Hours: Open 5:30 AM, Close 7:00 PM



Parking Rates

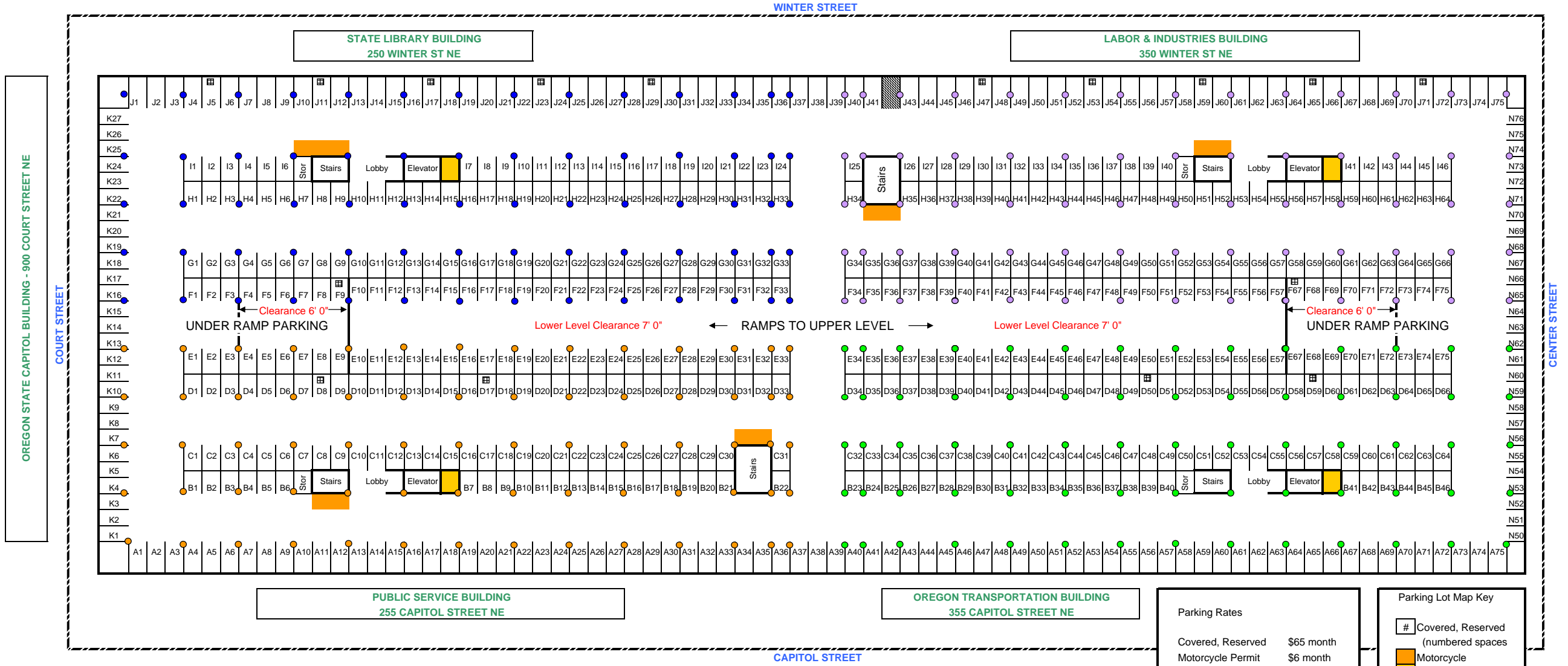
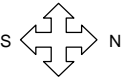
Covered, Reserved	\$65 month
Motorcycle Permit	\$6 month
Parking Meter	80¢ hour

Parking Lot Map Key

- 2 hour meter
- 4 hour meter
- 10 hour meter
- Motorcycle
- Visitor disabled
- Wheelchair Only
- Employee disabled
- Covered, Reserved (numbered spaces)
- Tunnels to buildings
- Floor Drain

CAPITOL MALL PARKING STRUCTURE LOWER LEVEL - 555
900 Chemeketa Street NE

Parking Garage Hours: Open 5:30 AM, Close 7:00 PM



Parking Rates	
Covered, Reserved	\$65 month
Motorcycle Permit	\$6 month
Bicycle Room	\$11 year

Parking Lot Map Key

- # Covered, Reserved (numbered spaces)
- Motorcycle
- Bicycle Locker
- Floor Drain