



Oregon Wildfire and Electric Collaborative Workshop #6: Practices on Public Safety Power Shutoffs (PSPS)

Tuesday, June 27, 2023, 9:30 am-12pm

Zoom Meeting

<https://puc-oregon-gov.zoomgov.com/j/1602958609?pwd=V05tc1JpR2F2YmVQS1Z6U2tMZ21WUT09>

Topic: OWEC PSPS Best Practices Workshop

Time: Jun 27, 2023 09:30 AM Pacific Time (US and Canada)

Join ZoomGov Meeting

<https://puc-oregon-gov.zoomgov.com/j/1602958609?pwd=V05tc1JpR2F2YmVQS1Z6U2tMZ21WUT09>

Meeting ID: 160 295 8609

Passcode: bm3qySC@YZ

One tap mobile

+16692545252,,1602958609#,,,,*5751311141# US (San Jose)

+16692161590,,1602958609#,,,,*5751311141# US (San Jose)

Dial by your location

+1 669 254 5252 US (San Jose)

Meeting ID: 160 295 8609

Passcode: 5751311141

Find your local number: <https://puc-oregon-gov.zoomgov.com/u/aeJHt2G3mT>

- | | |
|----------|--|
| 9:30 am | Welcome and Recap of the Collaborative and Workshop |
| 9:40 am | Background on PSPS Requirements and Learnings from September 2022 Activation |
| 10:00 am | Topic #1: Operational Settings Used by Utilities <ul style="list-style-type: none">• Jeff Carlson, CPI (Consumer's Power) |
| 10:45 am | Break (15 Minutes) |
| 11:00 am | Topic #2: Review of Utility Model Messaging <ul style="list-style-type: none">• Nora Yotsov, PacifiCorp• Drew Hanson, Portland General Electric |
| 11:10 am | Topic #3: Sharing Practices for Community Outreach in Vacation-Based Methods <ul style="list-style-type: none">• Brad Wilson, Central Electric Cooperative |
| 11:30 am | Open Discussion: <ul style="list-style-type: none">• When does a public safety need to also message but also might need to convey something that involves awareness of a PSPS? SWIC, SCRAP, Utilities• Single source site• Future topics for OWEC? |

Oregon Wildfire Electric Collaborative

June 27, 2023



Agenda

- Introduction
- OWEC Background
- PSPS Basics
- Utilities' Model Messaging
- Break
- Innovative Tactic for Getting the Info Out
- Collaboration Opportunities
- Wrap-up



Introduction

- Please provide your name, email and phone number
- Focus on solutions
- Respect all participants of the process
- Raise your hand to (*9 on phone) comment or ask a question
- Listen for opportunities to help solve gaps identified
- We continue to evolve and are focused on coordination and communication to improve



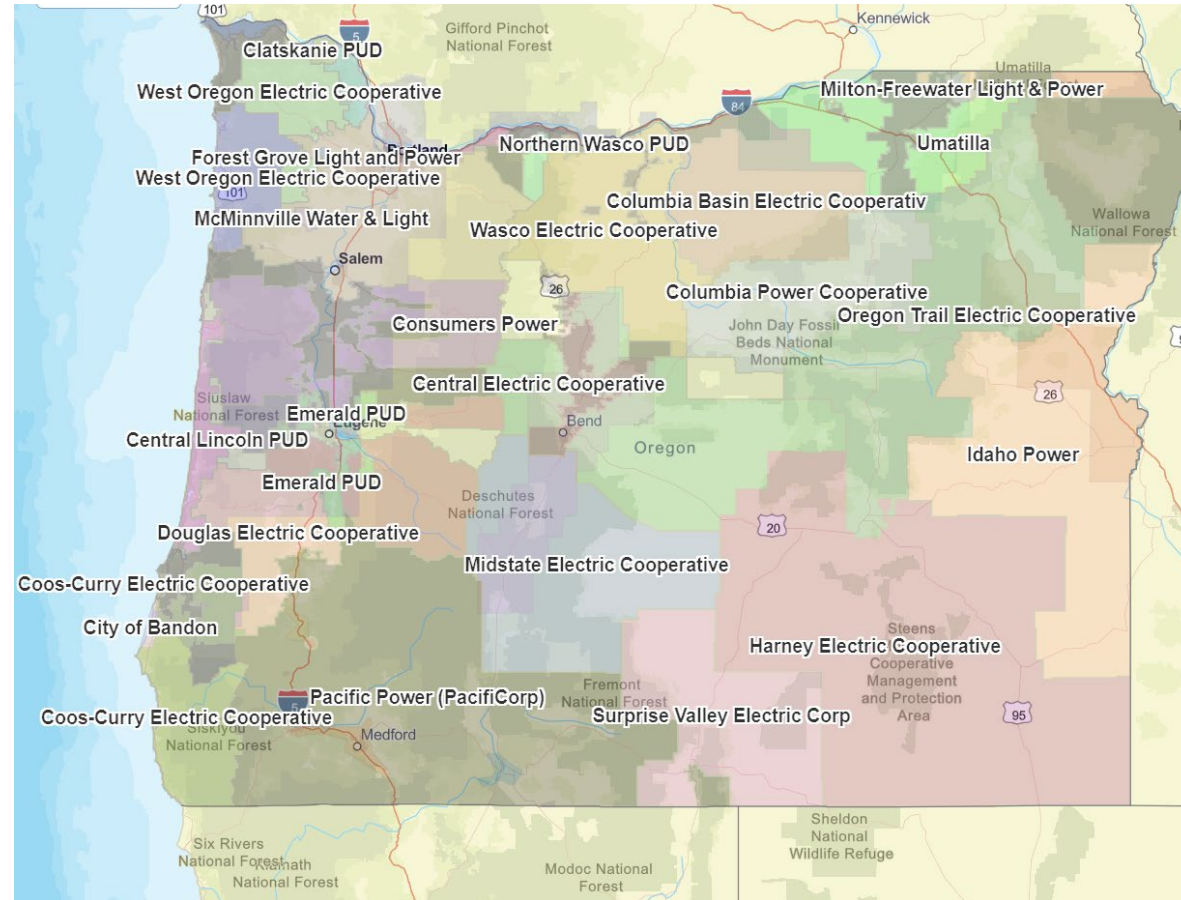
Oregon Wildfire Electric Collaborative (OWEC) Background

- Initiated by legislation
- Recognized that learning would be an ongoing activity
- OPUC facilitates
- Past workshops have focused on risk assessment, vegetation management practices, technology
- [OWEC website here](#)...website has workshop recordings and presentations



Oregon electric service providers

<https://www.oregon.gov/energy/energy-oregon/Pages/Find-Your-Utility.aspx>



Comparison of touchpoints between OPUC and electric utilities

IOUs (PGE, Pacific Power, Idaho Power)

OPUC is the economic regulator

OPUC is responsible for reviewing effectiveness and correctness of actions that are dictated by the rules, notably OAR 860-300 PSPS requirements

OPUC acts as a conduit to emergency support function (ESF-12), energy into the state's emergency response structure

COUs (38 providers, including Cooperatives, Municipalities, and Peoples Utility Districts)

OPUC is responsible for assembling plans approved by governing boards

OPUC acts as a conduit to emergency support function (ESF-12), energy into the state's emergency response structure

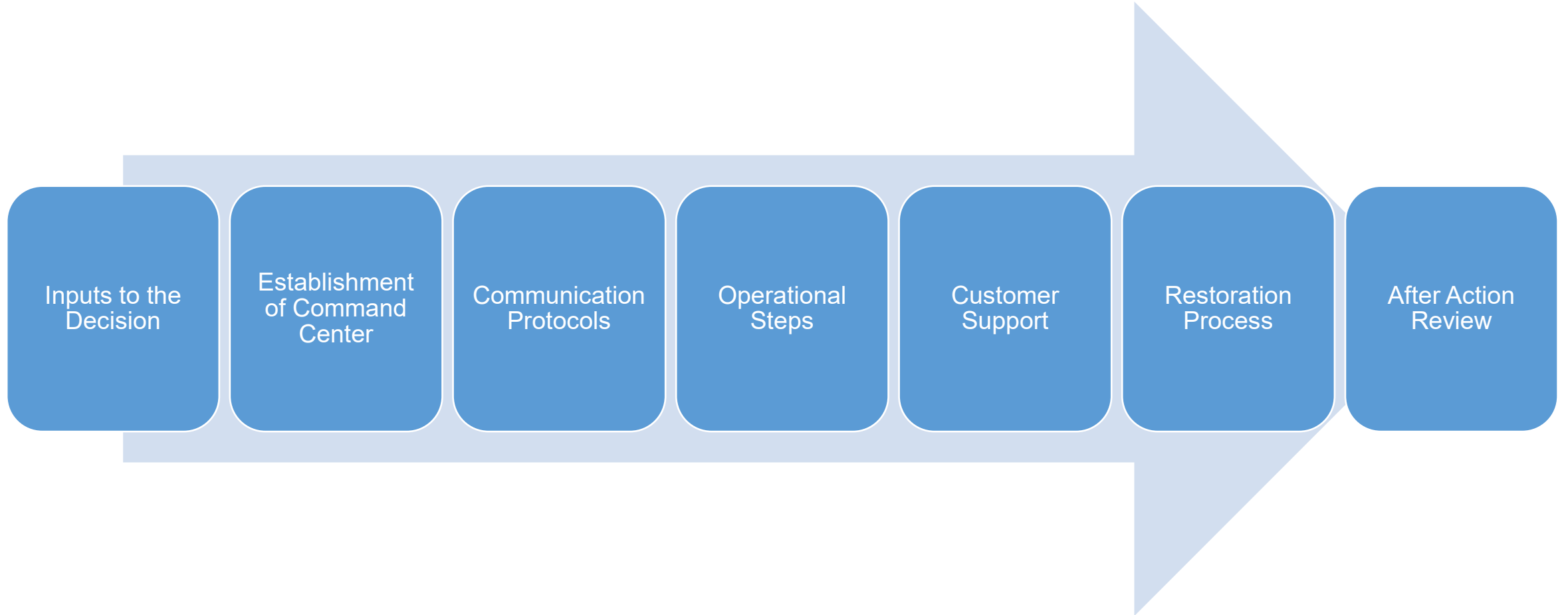


Public Safety Power Shutoff (PSPS) Activities – IOUs Only

Notification Requirements	What	Timing			Notes
Before	Where, when, how long, impacts,	72-48 hours	48-24 hours	4-1 hours	
During	24 hour updates, reenergization start/stop				
Public Safety Partners		√	√	√	When feasible the Utility will support Local Emergency Management efforts to send out emergency notifications
ESF-12		√	√	√	Will notify Oregon Emergency Response System (OERS) partners and Local Emergency Management in coordination with Oregon's Department of Emergency Management
Utility-identified critical facilities		√	√	√	While the rules do not require medically vulnerable customers explicitly, IOUs have provisions for noting them when customers have self-identified; GIS files are required for telecommunications providers
Customers			√	√	Notice provided via email, phone call, utility website, social media, radio, television, press releases. Utility's communications required under this rule do not replace emergency alerts initiated by local emergency response.



Basic Structure for PSPS Process



Wrap up



- Thank you for your time
- We will compile a participant list
- Please continue to coordinate and collaborate between electric utilities, public safety partners
- Current plans for all electric utilities can be found [here](#)



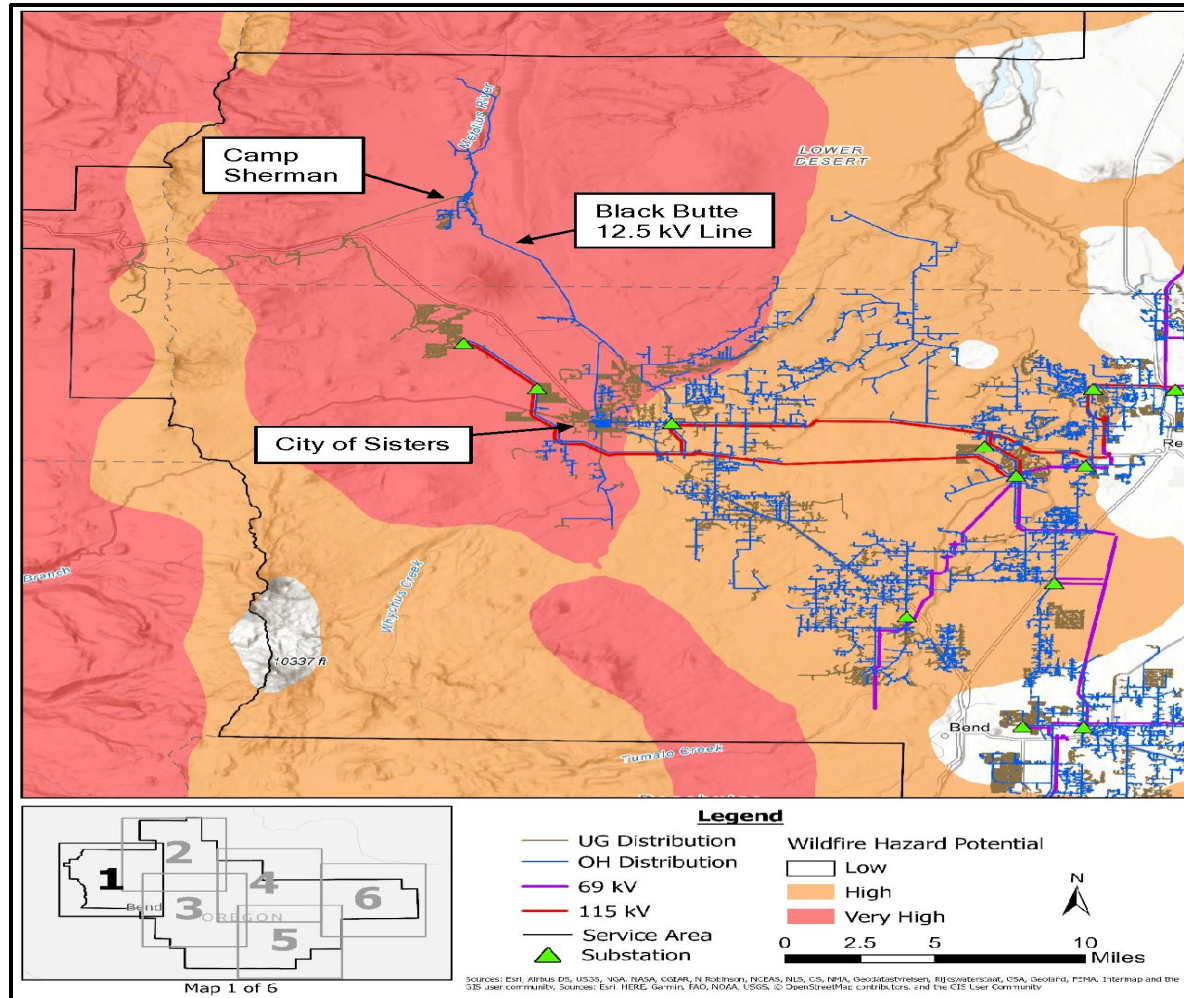


PSPS Communications in Resort Communities

Brad Wilson,
Chief Operating Officer
Tuesday, June 27, 2023
9:30 a.m.

Black Butte Ranch – Very High Wildfire Risk

2



Black Butte Ranch, Camp Sherman, Sisters

Black Butte Ranch

3

- Background:
 - 1,800-acre private resort community
 - West of the City of Sisters and adjacent to Deschutes National Forest
 - 200+ full-time, year-round residents
 - Swells to 5,000 plus during peak tourist season

PSPS Community and Member Outreach and Education Plan

4

- ✓ **Community outreach**
 - ✓ Meet with CEO & Staff
 - ✓ Virtual informational Meetings with members
 - ✓ Provide informational materials distributed by resort staff throughout resort

- ✓ **Ruralite**
 - ✓ President's Message

 - ✓ Two page ad in June and September issues

- ✓ **Mail PSPS Postcard to every member, including those with permanent residence outside of service territory**

- ✓ **Website & Social Media**



Questions?