

- Fire Activity
- Fire Mobilization
- Prioritization





# G A C C

Geographic Area Coordination Centers

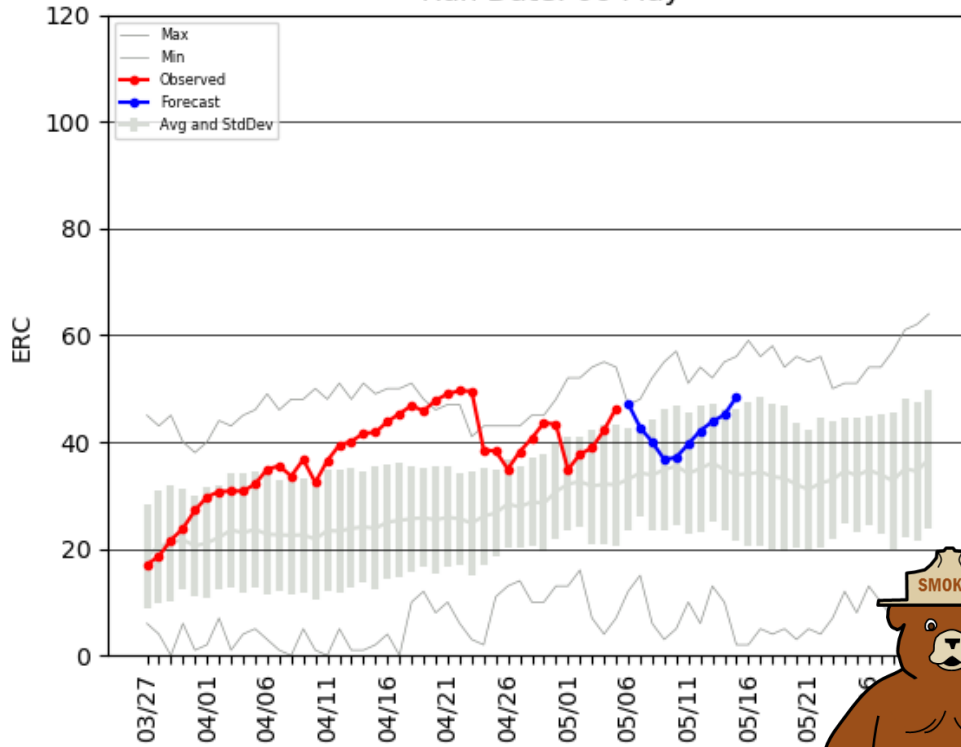
Welcome to  
National GACC  
Portal

[HOME](#) [ABOUT US](#) [DISCLAIMER](#) [PRIVACY POLICY](#) [CONTACT US](#)

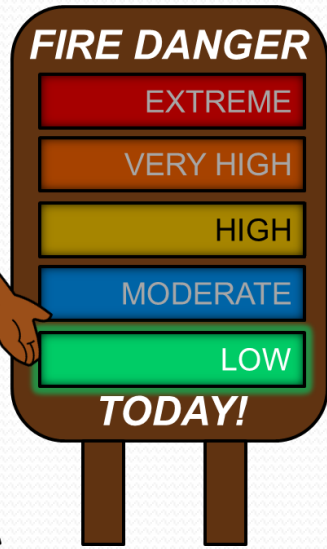
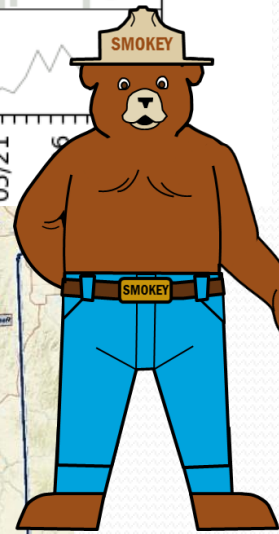




ERC-G for PSA NW06 for 2021  
Run Date: 06 May



Daily Fire Activity  
Daily Fire Danger  
Daily Fire Weather

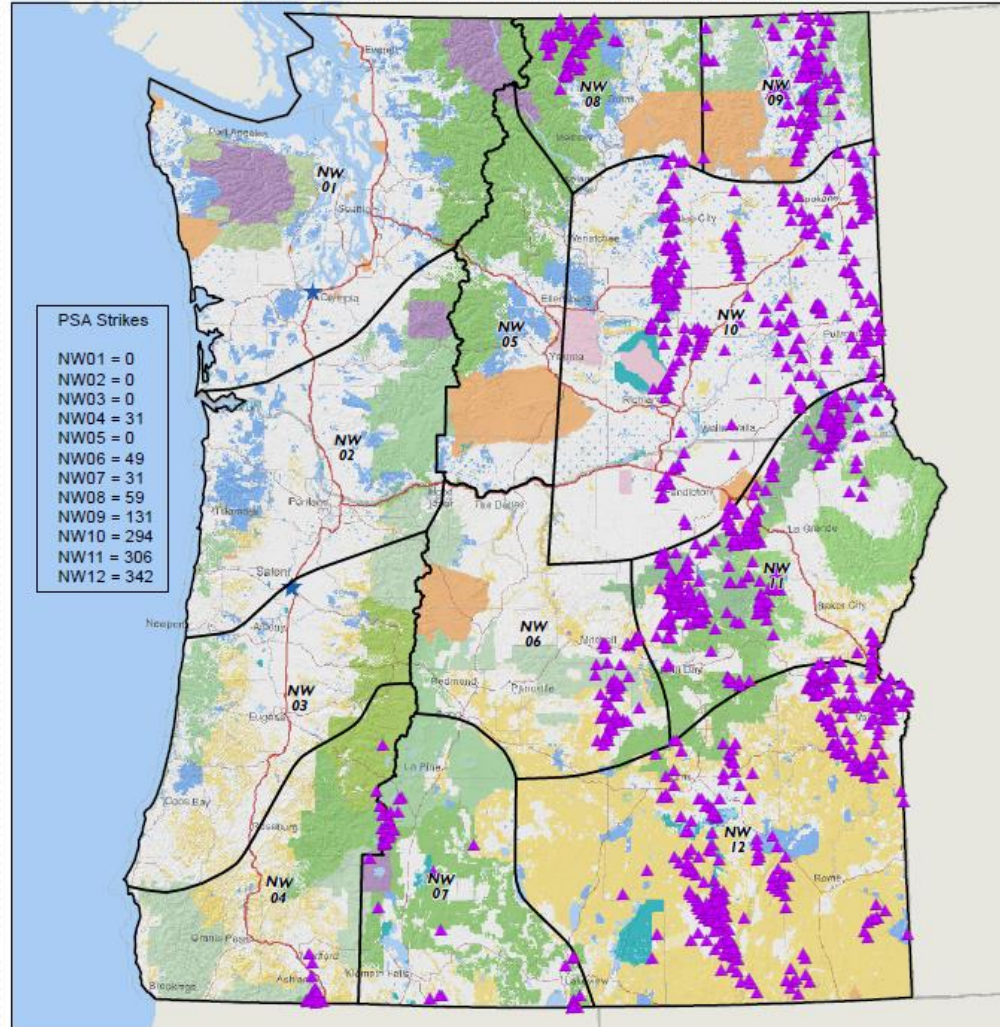
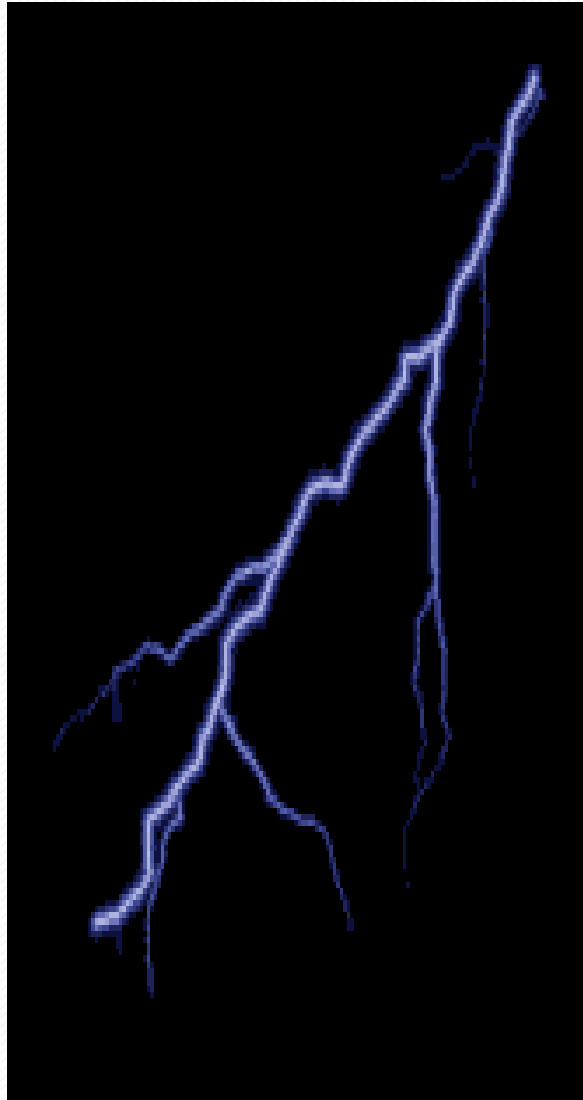




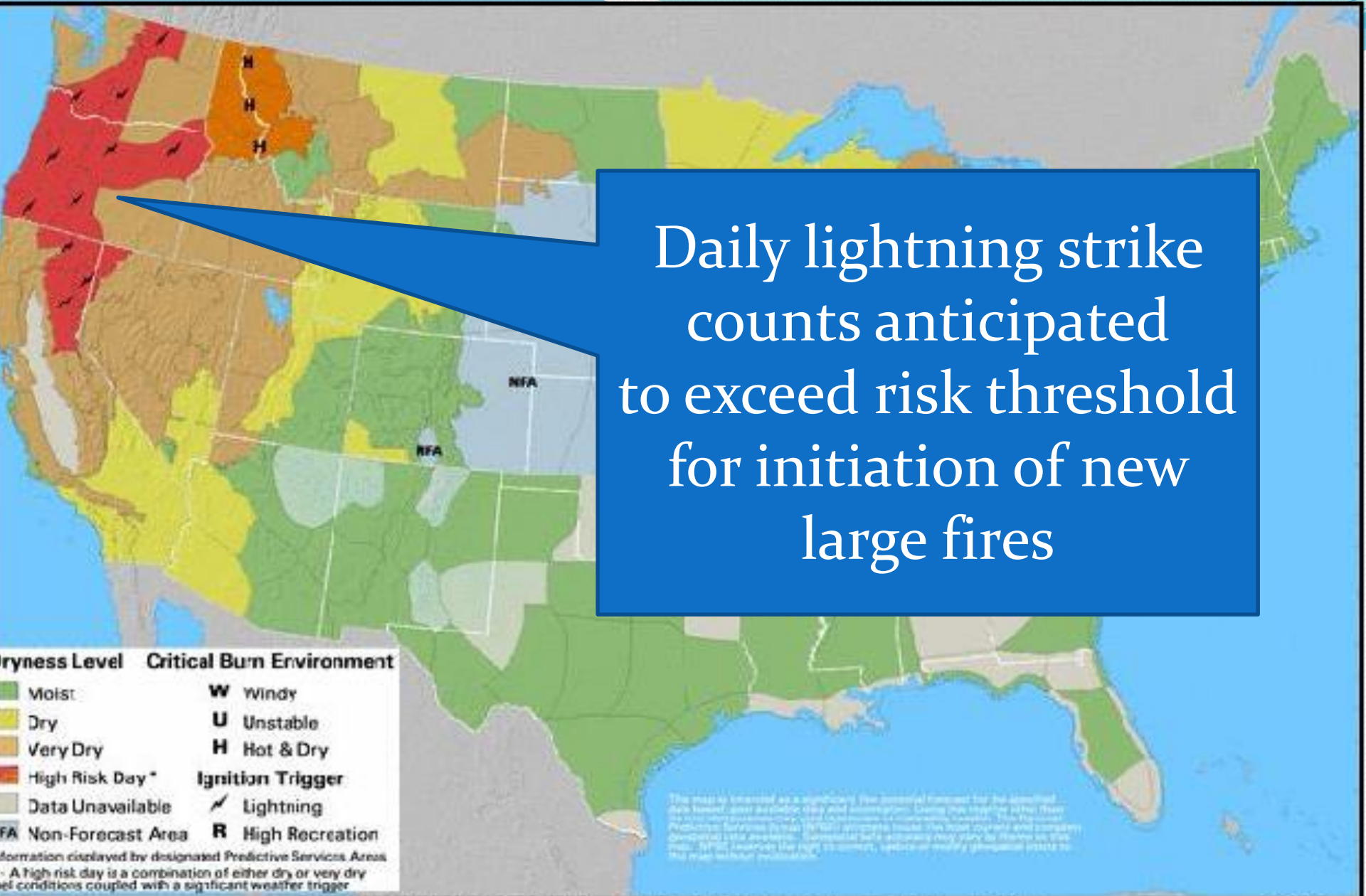
# Northwest Interagency Coordination Center

Lightning Strikes Previous 24 Hours - June 12th - June 13th 2020  
0800 to 0800

WASHINGTON Strikes = 517 OREGON Strikes = 726







# SIGNIFICANT FIRE POTENTIAL

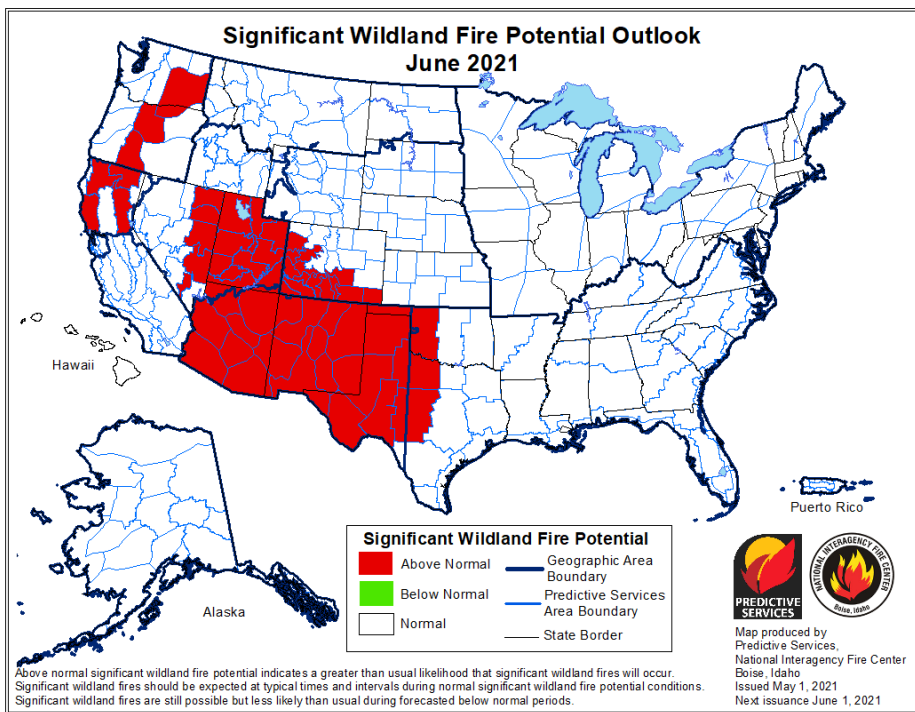
Valid For: Sunday August 17, 2008

Issued On: Thursday August 14, 2008 - 1:35 PM MDT

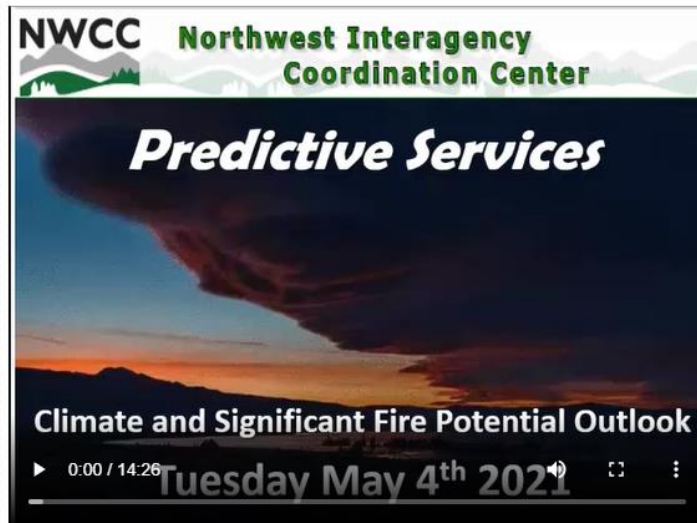


# June Large Fire Outlook

Risk of large, costly fires requiring mobilization of extra resources is expected to rise above typical in June in central Oregon and central Washington during windy conditions or widespread lightning events.



## Monthly and Seasonal



- [National Monthly and Seasonal Significant Fire Potential Outlook](#)
- [NWCC Pacific Northwest Monthly and Seasonal Outlook Bullet Points](#)
- [NWCC Pacific Northwest Monthly Powerpoint Version](#)



### Incident Information

- [Large Fire Information Summary](#)
- [Large Fire Map](#)
- [All-Risk Incidents](#)

### Predictive Services

- [Intelligence](#)
- [Weather](#)
- [Fuels/Fire Danger](#)
- [Outlooks](#)
- [Maps/Imagery/Geospatial](#)
- [Fire Analysis](#)

### Logistics/Dispatch

- [Dispatch](#)
- [Aviation](#)
- [Crews](#)
- [Equipment/Supplies](#)
- [Overhead](#)
- [All-Risk Support](#)

### Administration

- [Emergency Medical Evacuation](#)
- [Pacific Northwest Wildfire Coordinating Group](#)
- [NW MAC](#)
- [Northwest Geo-Board](#)
- [Policy and Reports](#)
- [Incident Business Management](#)
- [Safety Management](#)
- [YWNSA](#)
- [Software Applications](#)
- [Training](#)
- [NWCC Publications](#)
- [NW Dispatch Coordination](#)

### Related Links

- [Area Links](#)
- [National Links](#)



## Fuels/Fire Danger

### NWCC Products

- [10-Day Predicted ERC and 100 Hr Fuel Moisture by PSA](#)  
 (238 KB)

### NWCC PSA Fuels Conditions

Click on PSA of Interest for: Fuel Status, ERC Severity Graph, 1000 Hour Fuel Moisture.

Today's Forecast Burn Environment.



### Fuels/Fire Behavior Advisories

- No Current Fuels and Fire Behavior Advisories for the Northwest
- [National Fuels and Fire Behavior Advisories](#)

### PNW Fuel Status

- [Fuel Status](#)

### National Fuel Moisture Database

- [National Fuel Moisture Database](#)

### Wildland Fire Assessment System (WFAS)

- [Wildland Fire Assessment System](#)

### PNW Fire Danger Operating Plans

- [NWCC FDOP](#) (1MB)
- [Blue Mountains FDOP](#) (2.2MB)
- [Burns Interagency FDOP](#) (1.9MB)
- [Central Oregon FDOP](#) (4MB)
- [Central and Northeast Washington](#) (6MB)
- [Northwest Oregon FDOP](#) (In development)
- [South Central Oregon FDOP](#) (2.6MB)
- [Rogue River - Siskiyou NF FDOP](#) (13.6MB)

### Fire Danger Reference Material



**Northwest Interagency  
Coordination Center**

<http://gacc.nifc.gov/nwcc>