

Midstate Electric

Investing in Wildfire Mitigation, Vegetation Management, & Resiliency

OWEC MEETING

APRIL 9, 2024

BRIAN SHARR & TOM WELLER



Midstate Electric



Located in La Pine, Oregon



Counties Served: Deschutes, Klamath, Lake, Lane



Employees: 72



Meters: 21,960



Midstate Electric



Miles of Distribution Line: 2,469



Miles of Transmission Line: 172



National Forests: 2



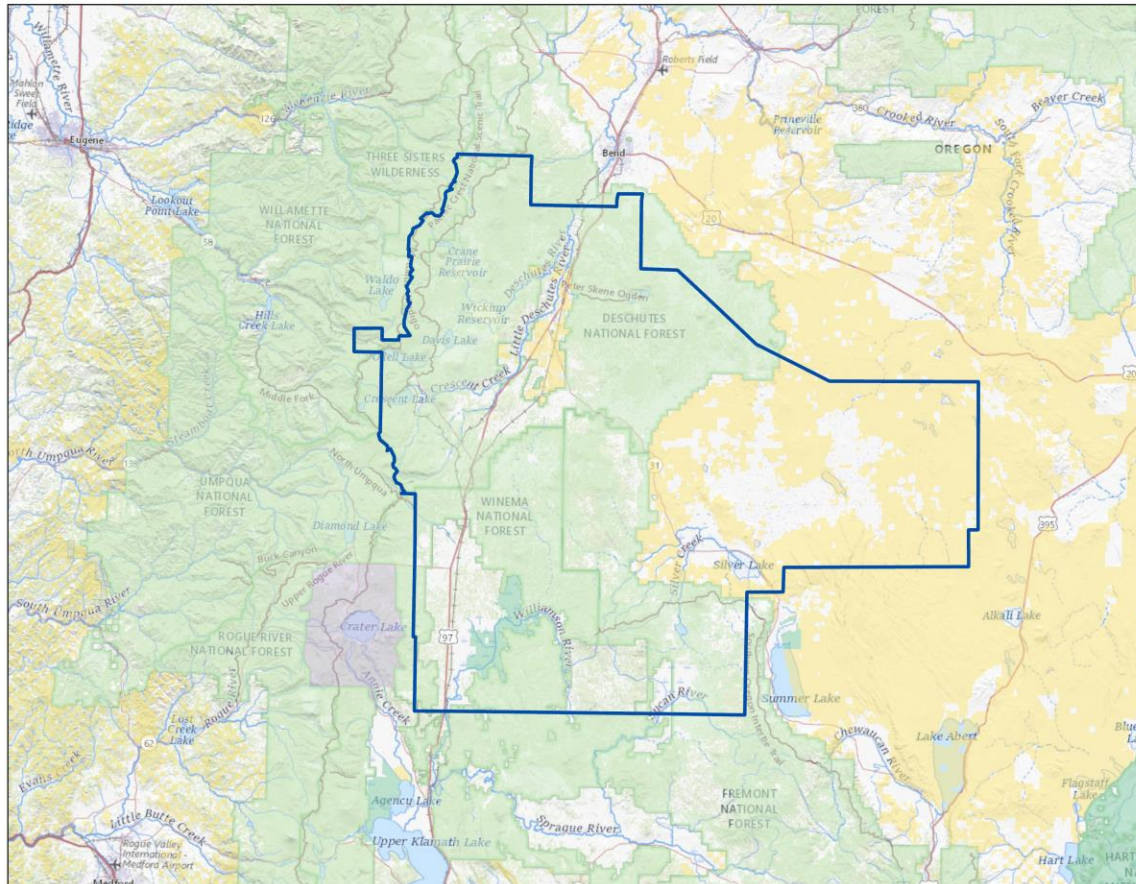
Ranger Districts: 4



BLM Districts: 2

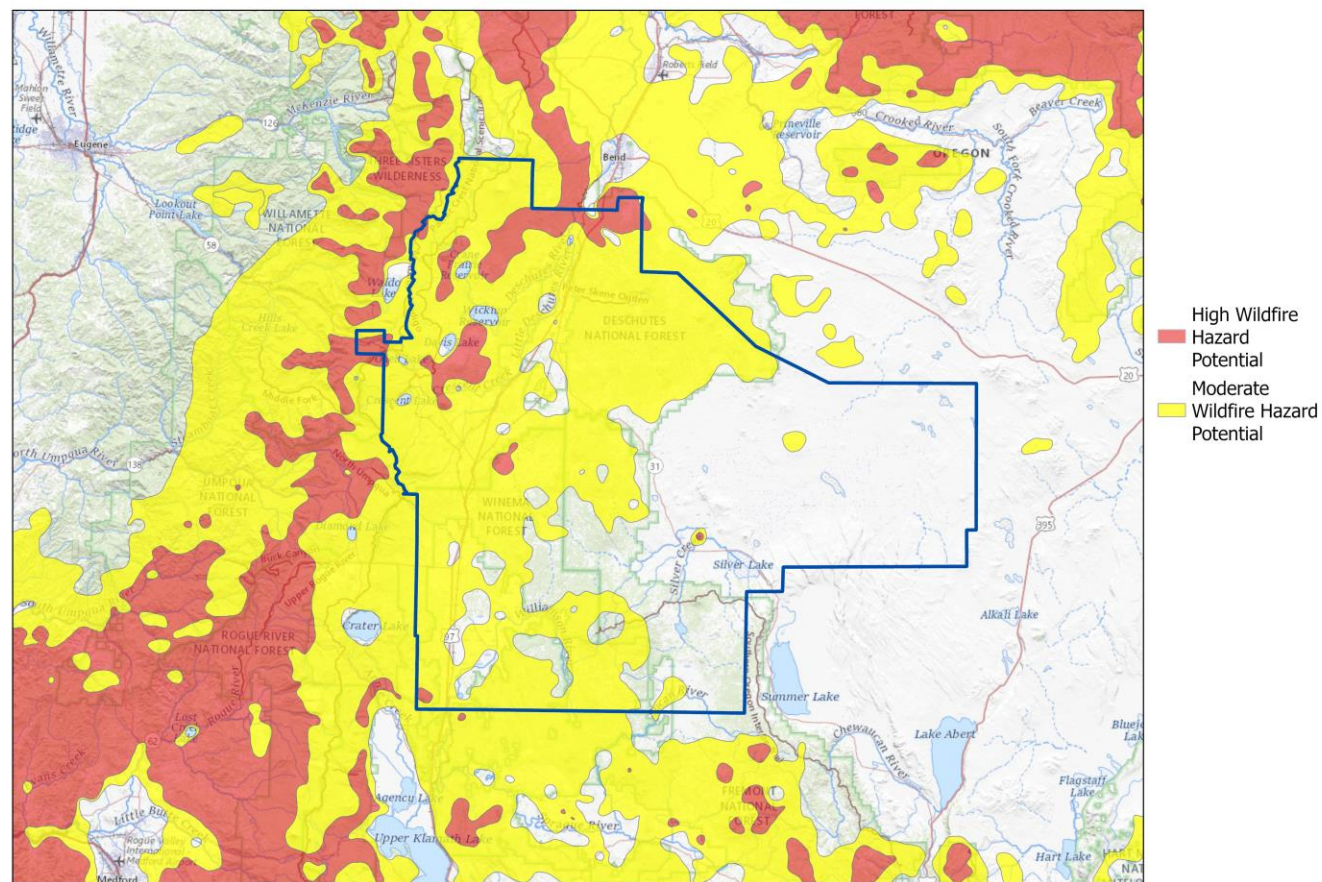


Federal Lands

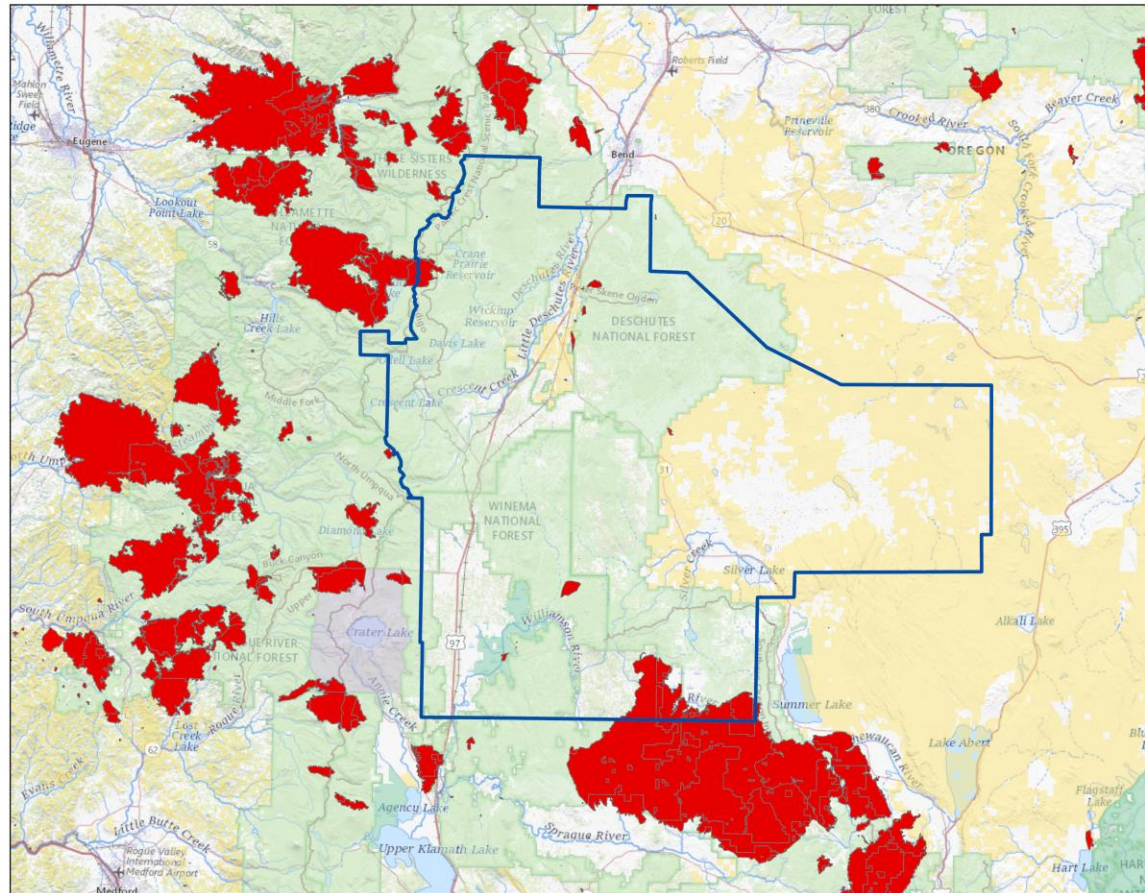


- Bureau of Land Management
- Bureau of Reclamation
- Department of Defense
- Fish and Wildlife Service
- Forest Service
- National Park Service

Wildfire Hazard Potential



Wildfire Events



- Bureau of Land Management
- Bureau of Reclamation
- Department of Defense
- Fish and Wildlife Service
- Forest Service
- National Park Service
- Wildfire Events



Mowing for Access and Fire Breaks



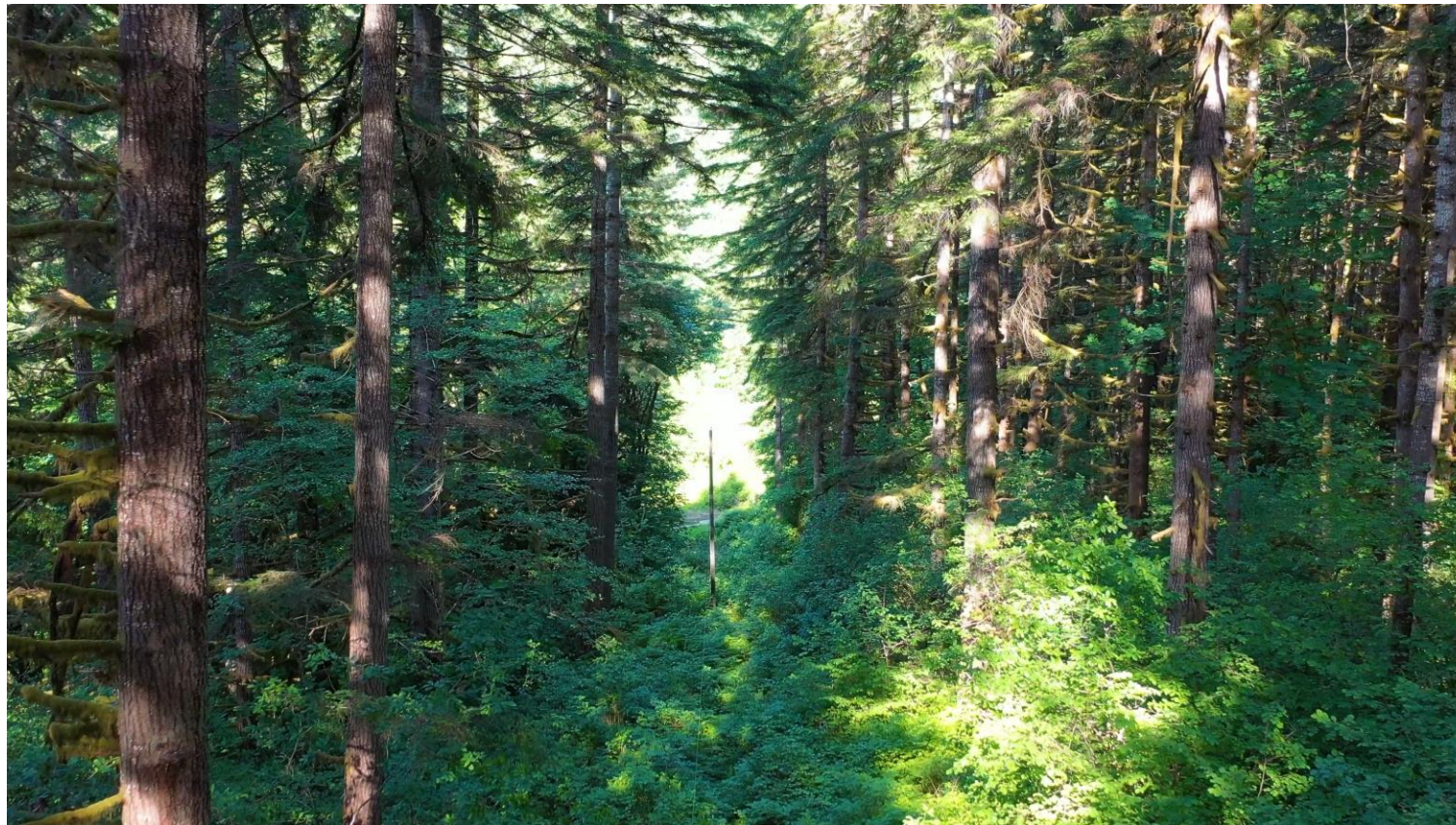
Fire Mitigation and Resiliency Efforts

Mitigation Efforts

- § Homeowner Clearance
- § Defensible Space
- § Working with Property Owners/Agencies
- § Grant Opportunities



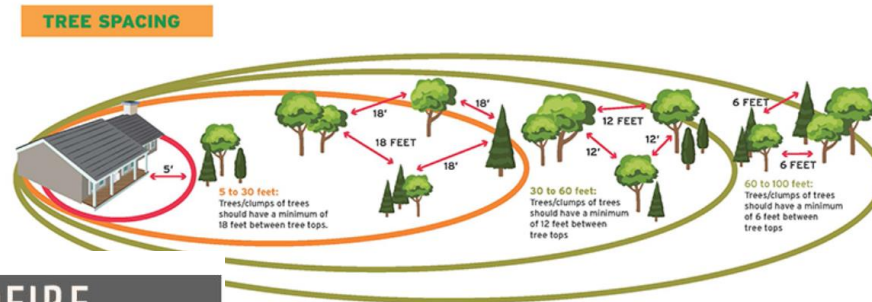
Drone Technology



Mitigation Efforts Member Communications

Preparing Your Home for Wildfire Season

To increase your home's chance of surviving a wildfire, choose fire-resistant building materials and limit three home ignition zones. The zones include the Immediate Zone: (0 to 5 feet around the house), the Intermediate Zone (5 to 30 feet), and the Extended Zone (30 to 100 feet).



WILDFIRE EVACUATION GUIDE

BE READY FOR POTENTIAL EVACUATION

- There is a fire in your local area.
- Prepare for any family with special needs, mobile property, and pets or livestock.
- Monitor local social media news & radio for information.
- Emergency Personnel may contact you via an emergency notification system.

**LEVEL 1
DANGER EXISTS**

BE SET TO EVACUATE

- You must be prepared to leave at a moment's notice.
- There is a significant danger in your area. Load your **5Ps**

OR-23

Prepare Now for Wildfire Potential

Spring is here. As the weather warms up, I want to start talking about wildfire preparedness and mitigation. Wildfires are

or anywhere on park grounds. Completely extinguish cigarettes before disposing of them.



Midstate Electric Cooperative

Published by Kimberly Ridosh · August 14, 2023 ·

The National Weather Service has a heat advisory in effect now through Thursday evening with temperatures up to 100 expected. Extended periods of dry and hot weather with strong winds can increase the risk of wildfires. We are placing our lines on a "Hotline Tag," which is the most sensitive setting to protect our system and members by minimizing the risk of igniting or spreading wildfires. We may take additional safety measures, including a Public Safety Power Shutoff (PSPS)... [See more](#)



WARNING: Potential for a Public Safety Power Shutoff (PSPS)

MEC is preparing for potential power shutoffs to prevent against wildfires as hot, windy conditions move in this week. We will provide as much notice as possible if a PSPS is implemented.

12

2 comments 29 shares

Daily Communications to Employees

It's Monday...
Need I say more?



DAILY WEATHER REPORT- April 8, 2024

Air Quality Index (AQI): (Deschutes-35), (Lake-11), (Klamath-35)

| | | | |
|-------|------|----------------|--|
| TEMP: | 24°F | | |
| HIGH- | 55°F | HUMIDITY: 100% | |
| LOW- | 31°F | | |

INDUSTRIAL FIRE PRECAUTION LEVELS (IFPLs):

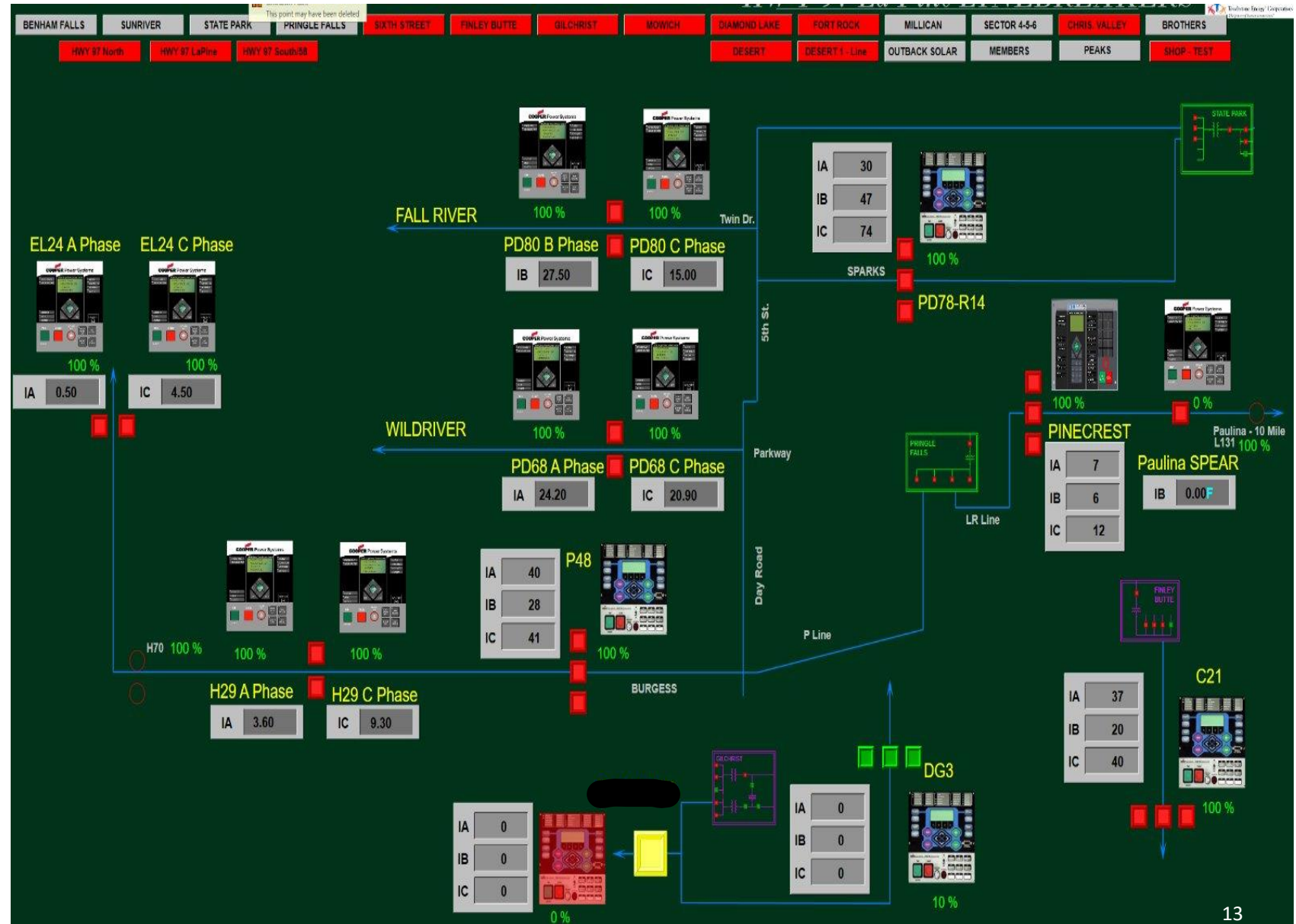
DESCHUTES: IFPL-1
 KLAMATH: IFPL-1
 LAKE: IFPL-1
 FIRE STATUS:

Notify employees when the ambient air concentration is at or above AQI **101**
 Make N95 masks available for voluntary use
 Notify employees when the ambient air concentration is at or above AQI 201
 Make N95 masks available are required
 Notify employees when the ambient air concentration is at or above AQI **500**
 Make N95 or higher (N99 and N100) masks are required

| Heat index | Risk level | Protective measure |
|----------------------------------|----------------------|--|
| Less than 91°F (33°C) | Lower (caution) | Basic health and safety planning |
| 91°F to 103°F (33°C to 39°C) | Moderate | Implement precautions and heighten awareness |
| 103°F to 115°F (39°C to 46°C) | High | Additional precautions to protect workers |
| Greater than 115°F (46°C) | Very high to extreme | Even more aggressive protective measures |

Sensitivity Settings

- Advanced SCADA
- Substation Settings
- Electronic Field Reclosers
- Advanced Fault Detectors





Field Reclosers

Wrap-Up

- Permitting on Federal Lands
 - U.S. Forest Service
 - Bureau of Land Management
 - State Lands
- Wildfire Potential
- Recreational Risks
- Technologies
 - Drone Usage and LIDAR
 - Future Satellite Technologies Using AI
 - Automated Reclosers and Line Sectionalizing
- Resiliency
 - Ductile Iron Poles
 - Fiberglass Crossarms
 - Tree Wire
 - Underground Services

Questions?



Brian Sharr, Operations Manager
bsharr@mse.coop

Tom Weller, Engineering Manager
tweller@mse.coop