

# Applying Essential Public Health Services via Emergency Preparedness & Response In a Transforming Health System

Oregon Health Authority ECHO Conference  
October 9, 2015

Tom Eversole, DVM, MS  
Center for Public Health Practice



Centers for Disease Control and Prevention  
Office for State, Tribal, Local and Territorial Support

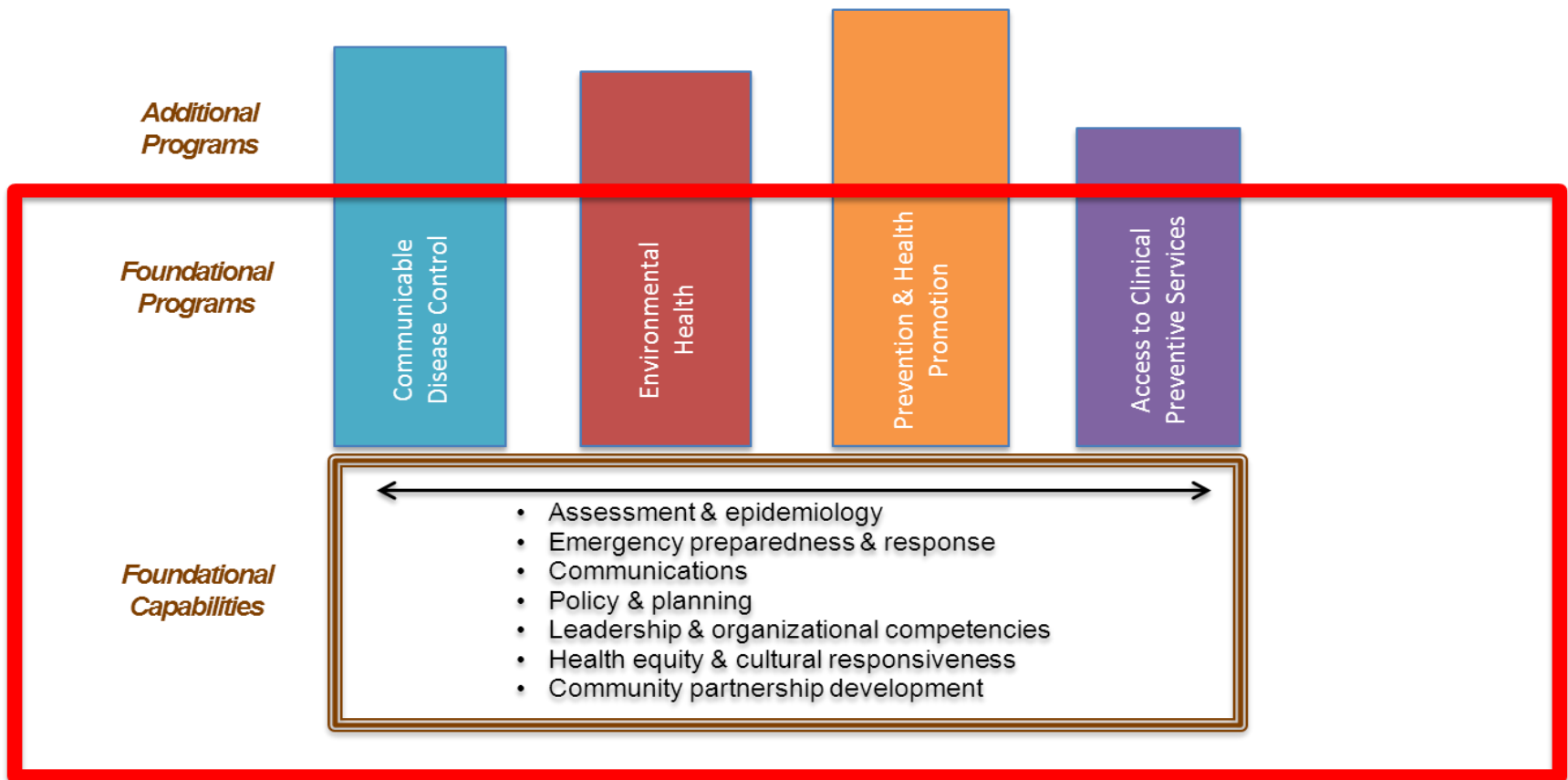


# Agenda & Objectives

- ❑ Describe the 10 Essential Public Health Services
- ❑ Consider how PHEP & HPP activities are an application of 10 well established public health services
- ❑ Consider Preparedness Capabilities as Essential PH Functions
- ❑ Describe Oregon's Public Health Modernization ... and imagine ways that PHEP could execute public health functions in a transformed system

# HB 3100

## Future Model for PH Services in Oregon



□ = Present @ every Health Dept.

# What is the Purpose of PH?

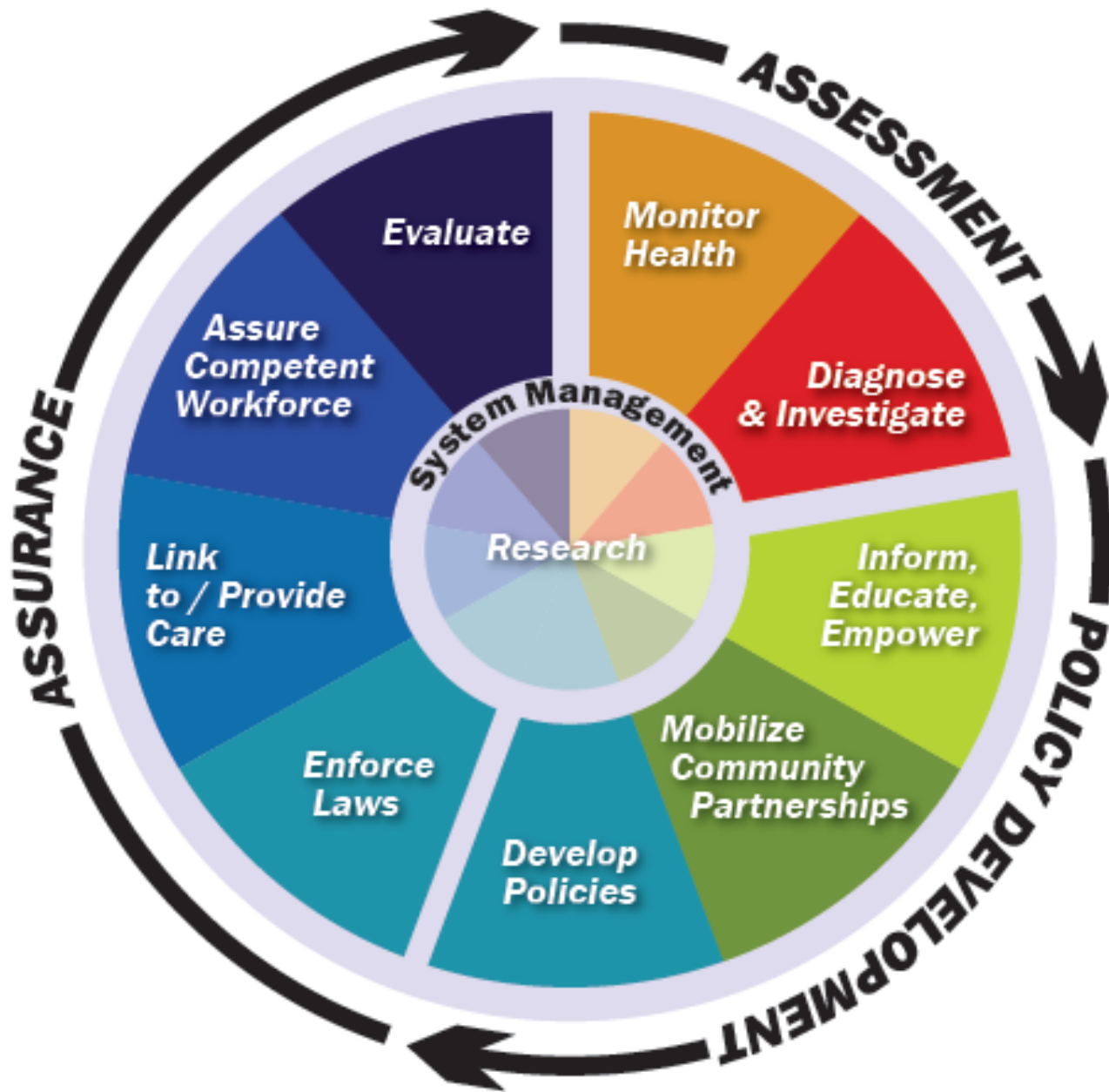
- Prevent epidemics and spread of disease
- Protect against environmental hazards
- Prevent injuries
- Promote and encourage healthy behaviors
- Respond to disasters and assist communities in recovery
- Assure the quality and accessibility of services

# How Does PH Accomplish That?

- ❑ Assessment
- ❑ Policy Development
- ❑ Assurance

<http://iom.edu/Reports/1988/The-Future-of-Public-Health.aspx>

<http://www.health.gov/phfunctions/public.htm>



# What are we doing and why?

- ❑ Identify HPP & PHEP support PH Essential Service
- ❑ Learn to think of (communicate) PHEP & HPP work in a Public Health framework
- ❑ So you can:
  - engage in planning community health systems modernization AND
  - ensure that PHEP & HPP are identified in Oregon's new model AND
  - PHEP / HPP are supported by the future

# Essential Service (ES) 1 – Monitor Health to Identify and Solve Community Health Problems

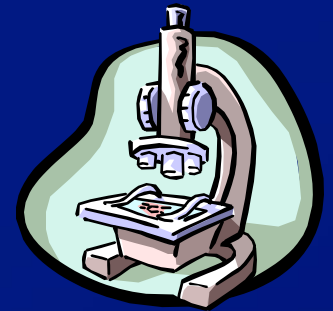
- **Accurate, periodic assessment of the community's health status**
  - Identification of health risks
  - Attention to vital statistics and disparities
  - Identification of assets and resources
- **Use of methods and technology (e.g., mapping technology) to interpret and communicate data**
- **Maintenance of population health registries**





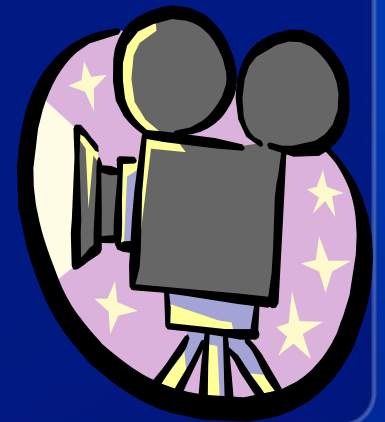
## **ES 2 – Diagnose and Investigate Health Problems and Hazards in the Community**

- **Timely identification and investigation of health threats**
- **Availability of diagnostic services, including laboratory capacity**
- **Response plans to address major health threats**



## **ES 3 – Inform, Educate, and Empower People About Health Issues**

- **Initiatives using health education and communication sciences to**
  - Build knowledge and shape attitudes
  - Inform decision-making choices
  - Develop skills and behaviors for healthy living
- **Health education and health promotion partnerships within the community to support healthy living**
- **Media advocacy and social marketing**



## **ES 4 – Mobilize Community Partnerships to Identify and Solve Health Problems**

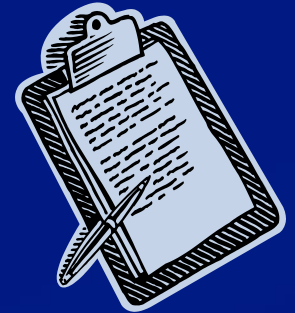
- **Constituency development**
- **Identification of system partners and stakeholders**
- **Coalition development**
- **Formal and informal partnerships to promote health improvement**

## ES 5 – Develop Policies and Plans That Support Individual and Community Health Efforts

- Policy development to protect health and guide public health practice
- Community and state improvement planning
- Emergency response planning
- Alignment of resources to assure successful planning



## **ES 6 – Enforce Laws and Regulations That Protect Health and Ensure Safety**

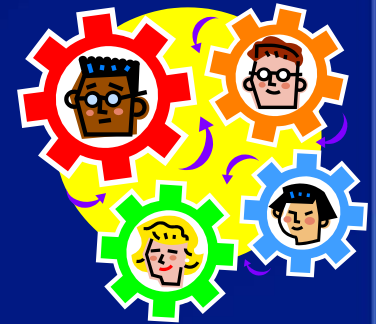


- **Review, evaluation, and revision of legal authority, laws, and regulations**
- **Education about laws and regulations**
- **Advocating for regulations needed to protect and promote health**
- **Support of compliance efforts and enforcement as needed**

## **ES 7 – Link People to Needed Personal Health Services and Assure the Provision of Health Care When Otherwise Unavailable**

- **Identification of populations with barriers to care**
- **Effective entry into a coordinated system of clinical care**
- **Ongoing care management**
- **Culturally appropriate and targeted health information for at risk population groups**
- **Transportation and other enabling services**

# ES 8 – Assure a Competent Public and Personal Healthcare Workforce



- **Assessing the public health and personal health workforce**
- **Maintaining public health workforce standards**
  - Efficient processes for licensing /credentialing requirements
  - Use of public health competencies
- **Continuing education and life-long learning**
  - Leadership development
  - Cultural competence

# ES 9 – Evaluate Effectiveness, Accessibility, and Quality of Personal and Population-Based Health Services

- **Evaluation must be ongoing and should examine:**
  - Personal health services
  - Population based services
  - The public health system
- **Quality Improvement**
- **Performance Management**





## **ES 10 – Research for New Insights and Innovative Solutions to Health Problems**

- **Identification and monitoring of innovative solutions and cutting-edge research to advance public health**
- **Linkages between public health practice and academic/research settings**
- **Epidemiological studies, health policy analyses and public health systems research**



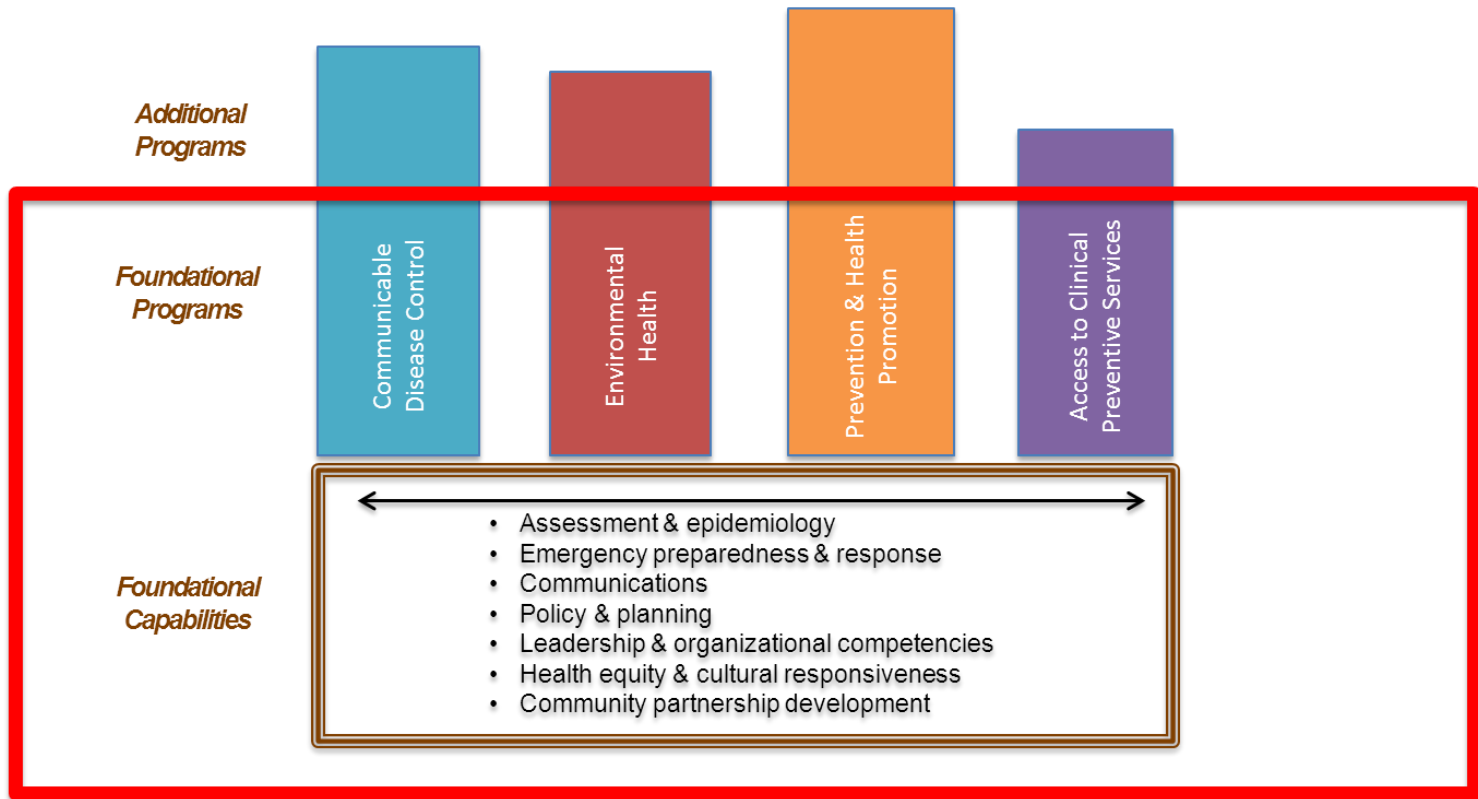
# PH & HC Preparedness Capabilities

1. Community (& HC System) Preparedness
2. Community (& HCS) Recovery
3. Emergency Operations Coordination
4. Emergency Public Information & Warning
5. Fatality Management
6. Information Sharing
7. Mass Care
8. Medical Countermeasure Dispensing

# PH & HP Preparedness Capabilities

9. Medical Materiel Mgt. & Distribution
10. **Medical Surge**
11. Non-Pharmaceutical Interventions
12. Public Health Laboratory Testing
13. PH Surveillance & Epi Investigation
14. **Responder Safety & Health**
15. **Volunteer Management**

# Conceptual Framework for Governmental Public Health Services



□ = Present @ every Health Dept.

# **HB 3100**

## **Modernization Work Ahead**

- **Finalize development of the Model**
- **Develop OARs related to Preparedness & Response**
- **Conduct gaps assessment of state and local system**
- **Recommend state and local staffing levels, core activities and resources**
- **Implement new system in 2017-19 Biennium**

# For More Information

- 10 Essential Public Health Services and the Public Health in America Statement  
[www.health.gov/phfunctions/public.htm](http://www.health.gov/phfunctions/public.htm)
- Mobilizing for Action through Planning and Partnerships  
[www.naccho.org/topics/infrastructure/mapp/index.cfm](http://www.naccho.org/topics/infrastructure/mapp/index.cfm)
- National Public Health Performance Standards  
[www.cdc.gov/nphpsp](http://www.cdc.gov/nphpsp)
- Public Health Accreditation Board  
[www.phaboard.org](http://www.phaboard.org)

## Contact Info

Tom Eversole, DVM, MS  
Administrator, Center for Public Health Practice  
Oregon Health Authority, Public Health Division  
800 NE Oregon St., Suite 730  
Portland, OR 97232

Phone 971.673.1707

E-mail [thomas.g.Eversole@state.or.us](mailto:thomas.g.Eversole@state.or.us)