

**Buckle everyone properly – it's the law!**  
All motor vehicle occupants must be secured in a safety belt or harness or in a child restraint system. Children must ride in rear-facing child safety seats until they reach age 2. A child weighing less than 40 pounds must be restrained in a child safety seat. Children weighing over 40 pounds must continue to be restrained in child safety seats or booster seats until they reach age 4 or 4'9" in height and the adult seat belt should fit them correctly.

**Protect yourself. Wear your helmet!**  
Helmets are proven to reduce the severity of injury for bicyclists, skateboarders, roller skaters, and those who ride scooters, motorcycles and mopeds. All motorcycle and moped riders must wear approved helmets. All bicyclists and their passengers, skateboarders, and scooter riders under age 16 must wear an approved helmet.

**PROHIBITED IN OREGON:**  
Handheld use of a mobile electronic device  
Drivers should pay attention to the important task of driving – *distraction driving bills*. Oregon law prohibits any handheld use of a mobile electronic device while driving. If you must attend to something other than driving, pull into a rest area, parking lot or safe place first.

**Obey posted speeds:**  
When weather or other conditions factor in, Oregon's basic speed law requires drivers to determine the reasonable and prudent speed to drive depending on the road and the situation; it does not allow drivers to exceed the posted or designated speed.

**Don't follow too closely:**  
One of the most common factors in Oregon crashes is following too closely. Maintain your space while driving, passing and changing lanes. 2-seconds or one car length per 30 mph is a good start. Don't cut in quickly in front of another vehicle, especially commercial vehicles.

**Give people riding bicycles enough space**  
When approaching a bicyclist sharing the lane, remember to SLOW DOWN. On roads where speeds are more than 35 mph, drivers may only pass a bicyclist when it's safe to driving to the left of the bicyclist and leaving enough distance between them so as not to make contact with the bicyclist if the bicyclist should fall into the driver's lane of traffic. It is not safe to pass and leave enough room for full distance, than the driver must slow down and wait to pass safely.

**Move over for all vehicles stopped for an emergency**  
Drivers must move over to a non-adjacent lane (or slow down) when approaching the rear of emergency vehicles or any motor vehicle that is stopped and displaying required warning lights or hazard lights, or a person is indicating distress by using emergency flares or emergency signs. Remain alert. If you can't move over, slow down. If you can't, then slow down. That means reducing your speed by at least five miles per hour below the posted speed.

**Respect the Zone, 24/7**  
Construction is occurring on roads throughout the state. Orange is your clue to slow down; in advance of the work zone, switch to slowing vehicles. There may be heavier and heavy equipment present, traffic flow changes and more be alert.

**Be extra cautious in safety corridors**  
Safety Corridors are stretches of highways that have higher-than-average fatal and serious injury crash rates. The corridors are marked with signs, and drivers should turn on headlights and be extra cautious.

**Don't get stuck in the NO-ZONE**  
The "No-Zone" represents the danger areas around trucks and buses where crashes are more likely to occur: truck drivers can't see you! The right-side blind spot is doubly dangerous because these big commercial vehicles make wide right turns. Give them room.

**Report erratic driving**  
You may be saving a life when you report a driver who is swerving, weaving in and out of traffic or otherwise appears impaired. Pull over to a safe location and call 1-800-24-DRUNK (243-7865) or in an emergency, call 911.

**Non-emergency police services or road hazards**  
Oregon State Police operates "OSP (star OSP on your phone), an easy way for anyone to contact the police dispatch for a non-emergency. If you are driving, pull over to a safe location before using your phone or ask someone in your vehicle to dial "OSP".

**You are required to report most crashes**  
Drivers and witnesses are required to stop at a crash and provide names, addresses and other information to those involved. An accident report must be filed with DMV within 72 hours when:  
• Damage to any vehicle is over \$2,500 (even if your vehicle was the only one in the crash).  
• Any vehicle is towed from the scene.  
• Injury or death resulted from this accident or  
• Damages to anyone's property other than a vehicle involved in this accident is more than \$2,500.

Oregon also requires drivers involved in a crash or who later suspect they may have been involved in a crash to stop and investigate if you think you hit something. You must also take action if you didn't realize at the time that it happened but later learn you may have hit something. That includes calling 911 if you may have been in a crash resulting in an injury or fatality. Failure to perform the duties of a driver involved in a motor vehicle crash can result in felony charges. If you do not file a report when required, Oregon law requires DMV to issue a suspension notice. See details at [www.oregon.gov/dmv](http://www.oregon.gov/dmv).

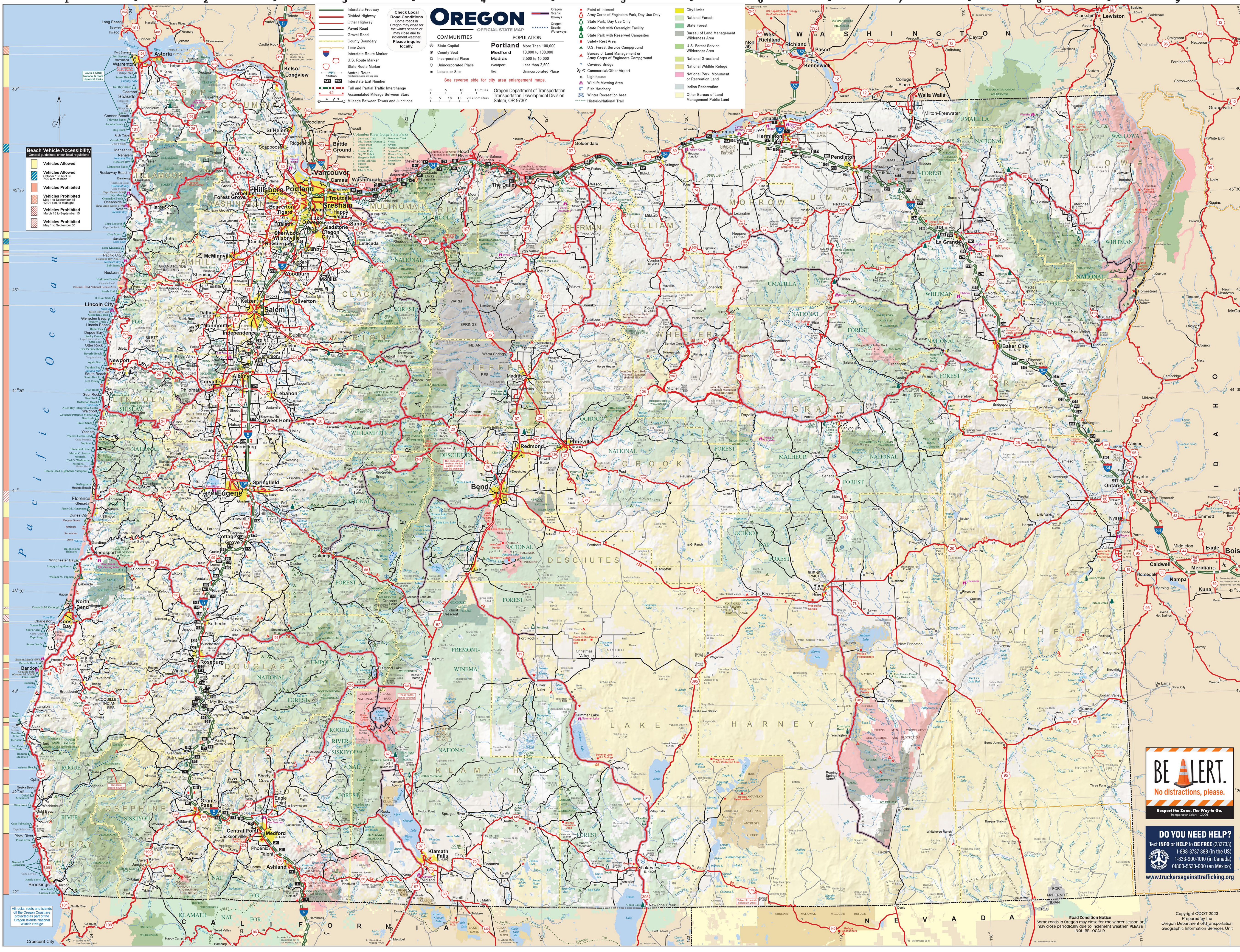
**Take a break at a safety rest area**  
Oregon's highway rest areas provide much-needed safety breaks. There are dozens of rest areas around the state managed by teams who focus on traveler information, premises security and maintenance. All facilities offer restrooms and trash receptacles. Many also offer potable water, free coffee, picnic tables, walking paths, pet exercise areas and information kiosks. See a map at [oregon.gov/transportation/rest-areas/oregon-rest-area-locations/](http://oregon.gov/transportation/rest-areas/oregon-rest-area-locations/).

**Snow Chains & Traction Tires**  
When traveling through Oregon in winter, you must carry chains or traction tires and use them when required, as indicated by signs posted along the highway. Under some conditions, four-wheel-drive and all-wheel-drive vehicles may be exempt. Chains include link and cable chains and any other device that attaches to the wheel, vehicle or outside of the tire and is designed to increase traction in ice or snow. A traction tire is a stud-tire or other tire that meets the tire industry definition as suitable for use in severe snow conditions; these tires are marked with a three-peaked mountain and a snowflake. Studded tires can only be used legally in Oregon from Nov. 1 through March 31.

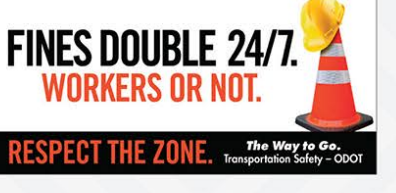
**Know Before You Go**  
Visit [www.TripCheck.com](http://www.TripCheck.com), or call 511 for:  
• Road conditions, incident reports, closures and delays  
• 700+ road cameras, including key locations in neighboring states  
• Maps showing speeds in real time  
• Weather reports and warnings  
• Construction updates  
• Waze-reported incidents  
• Rest areas, scenic byways, Sno-Parks, transportation options and more

**ROAD CONDITIONS NOTICE**  
Some roads in Oregon may close for winter or at any time due to inclement weather. PLEASE INQUIRE LOCALLY. Under normal conditions, all roads shown on this map are passable with a two-wheel-drive passenger vehicle and a minimum amount of snow. See local visitor centers or agencies for more detailed maps and to inquire about local road conditions.

ODOT does not discriminate on the basis of disability in admission or access to our programs, services, activities, hiring or employment practices. For questions regarding equal employment and affirmative action, or to request material in alternate formats, call 1-877-338-6888 (EEO-ODOT) or 711.



**OREGON**  
OFFICIAL STATE MAP  
COMMUNITIES  
POPULATION  
More Than 100,000  
10,000 to 100,000  
2,500 to 10,000  
Less than 2,500  
Unincorporated Place  
See reverse side for city area enlargement maps.  
Oregon Department of Transportation  
Transportation Development Division  
Salem, OR 97301



**BE ALERT.**  
No distractions, please.  
Request the Zone. The Way to Go.  
Oregon Department of Transportation  
Truckers Against Trafficking

**DO YOU NEED HELP?**  
Toll: INFO or HELP to BE FREE (232733)  
1-888-373-888 (in the US)  
1-833-900-1010 (in Canada)  
01800-5533-000 (in Mexico)  
[www.truckersagainstrafficking.org](http://www.truckersagainstrafficking.org)

Table listing cities and towns in Oregon with their corresponding population. The table is organized in columns, listing city names and their population figures. Major cities like Portland, Eugene, and Salem are listed with populations over 100,000. Smaller towns and unincorporated places are listed with populations under 2,500.