

Project Name - NE Oregon Strategic Defensible Space Projects

Contact Information

- Applicant sponsor – Wallowa Resources, [REDACTED], 401 NE First St. Suite A, Enterprise, OR 97828
- ODF District representative, if applicable – [REDACTED], NEO District, [REDACTED]

Treatment location

- Forest conditions within project areas are overstocked, homogeneous, and dominated by shade-tolerant tree species. Resulting in forests at heightened risk of disease, insect outbreak, and catastrophic wildfire. When such a wildfire event occurs, there is potential for significant impacts on vital infrastructure and private lands. This proposal seeks to improve fire resilience by implementing a number of targeted, labor-intensive treatments in close proximity to vital infrastructure on private lands.
- Morgan Lake Defensible Space Project (Very High Fire Hazard) treats strategic corridors and small acreage parcels.
- Northwest Union County Defensible Space Project (High Fire Hazard) is within the key priority watershed for La Grande.
- Hurricane Creek to Ferguson Ski Hill Defensible Space Project (High Fire Hazard) is on private lands that are outside of established Firewise communities.
- The work will ensure that high-priority private lands ready for treatment create vital connections to existing efforts that increase the resiliency of private lands.

Description of Treatment Activities

- Practices:
 - Specialized hand crews, from both private contractors and ODF, will remove hazardous fuels on small acreage homesites. Operations will focus on increasing canopy spacing, improving forest health, reducing ladder fuels, and removing decadent small diameter materials. Crews will scatter materials, construct small piles for burning or chipping, or otherwise remove fuels from the site. This work will focus on mitigating fuels and reducing the risk of wildfire on private lands in close proximity to buildings, where steep slopes exist, or where conventional treatment operations are limited.
 - Skilled local contractors with small-scale, specialized equipment will work near vulnerable infrastructure. Treatments will connect adjacent properties in high-priority project areas to improve defensible space and fire resilience. Corridor treatments will focus on sensitive areas that improve ingress/egress and support efficient and effective initial attack opportunities to vulnerable communities.
- Specific treatment activities:
 - Morgan Lake Defensible Space Project will utilize various approaches by crews in sensitive areas to reduce small diameter materials along strategic connector routes and around residences within the Morgan Lake community. This will reinforce the roadside buffers and focus on areas around homesites and infrastructure where other treatment methods are not available. Operations will employ techniques that focus on the protection of valuable infrastructure and increased safe access via ingress/egress routes. This project will reduce the continuity between hazardous fuels and community infrastructure, especially homes.
 - Northwest Union County Defensible Space Project will utilize a combination of mechanical and hand crew operations to accomplish fuel treatments on steep slopes with limited access and in sensitive areas close to private infrastructure. This will supplement surrounding large-scale project treatments by focusing efforts in confined areas near roads and between homes that are not within a formally established Firewise community.
 - Hurricane Creek to Ferguson Ski Hill Defensible Space Project area will utilize a variety of techniques on small acreage homesites, near established Firewise Communities, and around vulnerable infrastructure. Handcrews will employ treatments that create and enhance strategic fuel breaks adjacent to private land that reinforce ingress/egress routes. Contractors and ODF crews will focus on work that achieves fuel reduction treatments in challenging terrain.

Description of the anticipated benefit

- The project will focus on steep slopes and confined spaces directly adjacent to current and previous treatments. In recent years, partners have worked to develop a strategic approach for targeting and capitalizing on various opportunities. Assembling resources to achieve this coordinated effort enhances treatment continuity across ownership boundaries near important infrastructure. This project supports priorities identified by the Northern Blues

All Lands Partnership, a region-wide, multi-stakeholder collaborative effort that promotes strategic approaches to wildfire resilience and safe wildfire response. Investments in project planning across ownership boundaries, that incorporate local CWPPs, enhance the Partnership's efforts and will ensure this project addresses gaps where priority landowners may not be adequately funded through other mechanisms. Outreach has been conducted to landowners who may require technical expertise, and subsequent funding, to implement costly wildfire mitigation treatments. As a result of these efforts, funding can be swiftly allocated to vulnerable lands, improving resilience within the timeline of this grant. By employing local expertise to conduct these operations, valuable benefits will be realized by treating more acres with less input. Local contractors have demonstrated innovative approaches to utilizing small diameter materials. This will offset overall costs and increase the number of acres treated within the scope of this project. Proposed activities are being conducted to support the extensive efforts currently being accomplished through funding sources including a Collaborative Forest Landscape Restoration Program (CFLRP) grant, Regional Conservation Partnership Program (RCPP), and Conservation Implementation Strategy (CIS) grants through the NRCS, tribal mitigation efforts, and other prospective opportunities.

Timeline for implementation

- Spring 2022 -
 - Finalize project plans, treatment prescriptions, and activities
 - Establish agreements and draft contracts
 - Retain willing contractors (initially identified)
 - Landowner outreach to recruit participants (initially identified)
 - Begin field validation with participants
- Summer 2022 -
 - Continue outreach and education efforts
 - Implement mechanical treatments
 - Evaluate projects and monitor progress
- Fall 2022 -
 - Submit interim progress reports
 - Ongoing mechanical treatments and monitoring
- Winter 2022/2023 -
 - Finalize treatment operations and monitoring
- Spring 2023 -
 - Complete treatments
 - Finalize contractor payments
 - Reporting

Budget

- Total Grant Amount Requested = \$291,972
 - Hand and mechanical work to cut/pile/burn/chip fuels to provide defensible space around homes and associated structures, and in confined sections of key fuels breaks within these areas.
 - \$45,000: Morgan Lake Defensible Space Project - 18 homesites
 - \$100,000: Northwest Union County Defensible Space Project - 30 homesites
 - \$80,000: Hurricane Creek and Ferguson Ski Hill Defensible Space Project - 25 homesites
- Total Project Costs = \$376,305
- Indirect Project Costs = \$15,092
- Percentages to sponsor = 29.09%
- Percentages to service provider assistance = 0%
- Leverage sources and amounts = The NEO Wide RCPP will be carrying out fuels reduction work adjacent to and within the communities targeted by this opportunity. Expenditures associated with those fuels reduction efforts will be utilized as matching funds for the SFG program.

Budget Worksheet

Instructions: Fill out blue-bordered boxes

Grant Agreement #/Project Name:

#

/ NE Oregon Strategic Defensible Space Projects

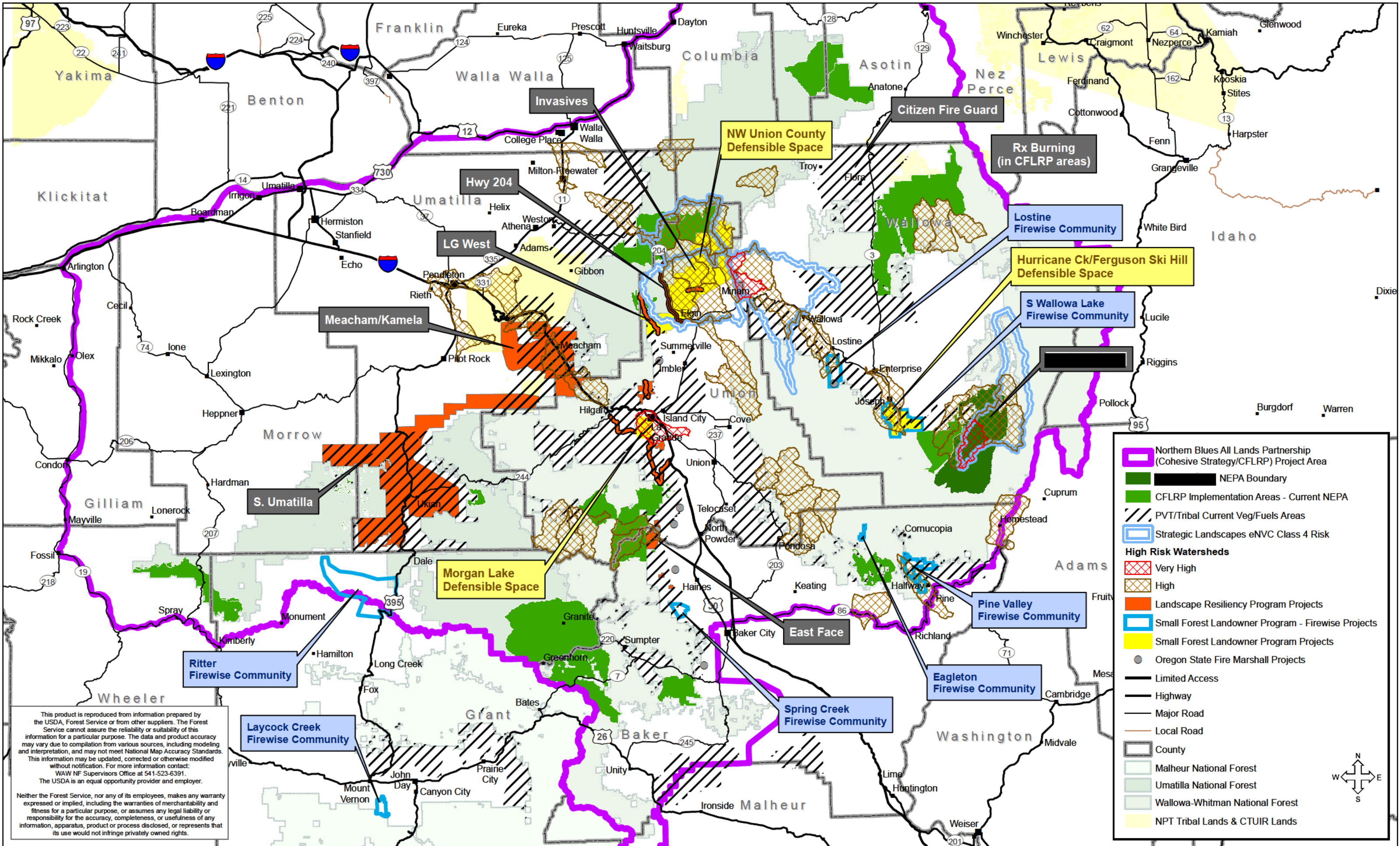
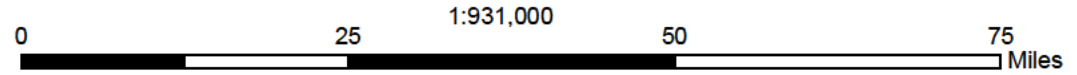
Deliverables	
Below are examples, replace with your projects quantified treatment activities (acres)	
\$45,000	Hand work, cut/pile/burn/chip fuels to provide defensible space around homes and associated structures in the Morgan Lake Defensible Space project area. Approximately 18 homesite defensible space projects.
\$100,000	Mechanical/hand work - cut/pile/burn/chip/masticate fuels to provide defensible space around homes and associated structures in the Union County Northwest Defensible Space Project area - Approximately 30 homesite defensible space projects.
\$80,000	Mechanical/hand work, cut/pile/burn/chip fuels to provide fuels breaks and defensible space around homes and associated structures in the Hurricane Creek to Ferguson Ski Hill outside Wallowa Lake Firewise footprint. Approximately 25 homesite defensible space/fuels break treatments.
#	75 acres of slash pile and burning where chipping is accessible
#	Add deliverables as needed
#	Add deliverables as needed
#	Add deliverables as needed
#	Add deliverables as needed
#	Add deliverables as needed
#	Add deliverables as needed
#	Add deliverables as needed
#	Add deliverables as needed
Treatment Footprint	73 Homesites approximately 2 acres/homesite. Short sections of key fuels breaks within these areas will be considered for funding as well.

Cost Category	Grant Request	Leverage		Total Project Cost
		Match (if any)	Leverage (if any)	
1. Personnel	\$ 54,772.00			\$ 54,772.00
2. Fringe Benefits	\$ 12,200.00			\$ 12,200.00
3. Travel	\$ 0.00			\$ 0.00
4. Equipment	\$ 0.00			\$ 0.00
5. Supplies	\$ 0.00			\$ 0.00
6. Contractual	\$ 125,000.00	\$ 84,333.00		\$ 209,333.00
7. ODF (if applicable)	\$ 100,000.00			\$ 100,000.00
Total	\$ 291,972.00	\$ 84,333.00	\$ 0.00	\$ 376,305.00

Narrative justification by line item: totals should match claim above.

For each line item	Detail by position or item cost, rate, number of units, and subtotals. Tie costs to Deliverables. Example: Personnel and Fringe (\$1,480 and \$740=\$2,220) for 1 Ecologist working 40 hours @ \$37/hour to treatment plan 100 acres of fuel treatments
Personnel & Fringe	<ul style="list-style-type: none"> - New Admin/Contract Assistance Position @ \$20/hr for for 888 hours to assist with contract administration - NE OR Firewise Community Coordinator @ \$22/hr for 436 hours to assist with outreach to landowners in Project Areas - My Blue Mountains Woodland Partnership Coordinator @ \$28/hr for 440 hours to assist with landowner outreach and mobilization in Project Areas - Personnel line item includes indirect to Wallowa Resources at 29.09% of Salary/Fringe = \$15,092 - Personnel & Fringe to support the positions = \$51,880
Travel	
Equipment	
Supplies	
Contractual Payments	Note: the final split between Contractual and ODF crew completed homesites will be based on oppurtunities throughout the implementation of these individual projects. ODF crews will have involvement in each "Project Area". \$225,000 is being requested to carry out this work and for proposal purposes was split between contractual and ODF Crews. See below for the description of contractual/ODF Crew work:
ODF (if Applicable)	Contractual and ODF crew work under the same set of prescriptions which will result in the same treatment regardless of who completed the work. Average of 2 acres of defensible space around homesites and associated buildings. Projected cost = \$3,082/homesite. Key short spanning fuels break work within proposed communities will be completed at \$1,541/acre.
Leverage Sources	The NEO Wide RCPP will be carrying out fuels reduction work adjacent to and within the communities targeted by this opportunity. Expenditures associated with those fuels reduction efforts will be utilized as matching funds for the SFG program.

SFG, NE Oregon Strategic Defensible Space Projects - Sponsor: Wallowa Resources

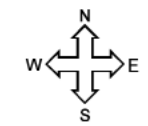


Legend

- Northern Blues All Lands Partnership (Cohesive Strategy/CFLRP) Project Area
- NEPA Boundary
- CFLRP Implementation Areas - Current NEPA
- PVT/Tribal Current Veg/Fuels Areas
- Strategic Landscapes eNVC Class 4 Risk
- High Risk Watersheds**
 - Very High
 - High
- Landscape Resiliency Program Projects
- Small Forest Landowner Program - Firewise Projects
- Small Forest Landowner Program Projects
- Oregon State Fire Marshall Projects
- Limited Access
- Highway
- Major Road
- Local Road
- County
- Malheur National Forest
- Umatilla National Forest
- Wallowa-Whitman National Forest
- NPT Tribal Lands & CTUIR Lands

This product is reproduced from information prepared by the USDA, Forest Service or from other suppliers. The Forest Service cannot assure the reliability or suitability of this information for a particular purpose. The data and product accuracy may vary due to compilation from various sources, including modeling and interpretation, and may not meet National Map Accuracy Standards. This information may be updated, corrected or otherwise modified without notification. For more information contact: WAW NF Supervisors Office at 541-523-6391. The USDA is an equal opportunity provider and employer.

Neither the Forest Service, nor any of its employees, makes any warranty expressed or implied, including the warranties of merchantability and fitness for a particular purpose, or assumes any legal liability or responsibility for the accuracy, completeness, or usefulness of any information, apparatus, product or process disclosed, or represents that its use would not infringe privately owned rights.



NORTHERN BLUE MOUNTAINS



"WORKING IN SHARED STEWARDSHIP
TOWARD A RESILIENT LANDSCAPE"

TO: Landscape Resiliency, Small Forestland Owner, and Small Forestland-Firewise Review Committees [REDACTED]

RE: Northern Blues Funding Request to the Landscape Resiliency Program (LRP), Small Forestland Owner Grant (SFOG) Program, and Small Forestland Firewise Grant (Firewise)

Dear [REDACTED] LRP, SFOG, & Firewise Review Committees -

On behalf of the Northern Blues All Lands Partnership (NBAL), we offer our strong support of the three proposals being submitted from our region. In planning for our applications, we looked at the three RFPs for funding under SB 762 in addition to Oregon State Fire Marshall's planned projects to identify the best funding pools and components for our overall strategy. The (1) Landscape Resiliency Program Proposal (*Northeast Oregon Fire Risk Reduction and Resiliency*) will support implementation and planning for our larger scale fuel break and prescribed burning projects on private and federal lands; (2) our Small Forestland Firewise Grant proposals (*Northeast Oregon Firewise Communities*) focus on community resiliency and defensible space projects within established Firewise Communities from across our region and (3) and the Small Forestland Owner Grant Proposal (*Northeast Oregon Strategic Risk Reduction Cooperative Project*) is working to fill in the gaps between these two by focusing on strategic wildfire risk reduction projects among groups of small forestland owners who are not yet located within established Firewise Communities – but are within high risk watersheds as identified within each county's Community Wildfire Protection Plan.

Combined, these three proposals are emblematic of this region's vision for landscape forest restoration across ownership boundaries, and is in alignment with and builds upon the Northern Blue Mountains Collaborative Forest Landscape Restoration Program (CFLRP) proposal our two local National Forests – the Umatilla and Wallowa Whitman – recently received in 2021. The three proposals are also complimentary to NIPF landowner and tribal driven projects occurring on adjacent lands supported by funding sources including RCPP, EQIP, Joint Chiefs, Western States, E-board, and Community Assistance grants (see attachment A). Together, these projects strengthen the groundwork for the future of Shared Stewardship in Northeast Oregon– and align strongly with our Partnership's goals and objectives outlined in our [Memorandum of Understanding](#).

- NBAL is a coalition of diverse local and regional partners collectively committed to strategically planning and implementing forest and fire resiliency restoration projects across 10-million acres of public, private and tribal forestland in the southeast Washington- northeast Oregon Northern Blue Mountains Region (see attachment A). All of the NBAL partners are united in the goal of restoring and maintaining forested ecosystems to greater levels of fire resiliency, reducing the risk, size and frequency of high severity wildfire, and allowing naturally occurring fire to play its beneficial roles when and where appropriate.

- We have developed a strategic process and governance structure (see attachment B) to coordinate forest restoration projects in high priority, high wildfire risk watersheds in a way that supports the social infrastructure and local knowledge and support needed to implement the projects.

The projects outlined in all three proposals will help address bottlenecks within key cross boundary projects our Partnership has prioritized – and fit neatly with the objectives of the Partnership:

- Fuels and thinning treatments in areas adjacent to private and/or tribal lands, with cross-boundary cooperation anticipated. These treatments feature thinning and mastication operations followed by pile and/or broadcast burning. Similar treatments are ongoing across much of the adjacent land and anticipated in other areas as this project progresses.
- Creation of strategic fuels breaks within the Forests that will facilitate control of untimely wildfire while providing enhanced opportunities for the use of beneficial wildfire as a restoration tool. These treatments feature commercial and non-commercial mechanical treatments followed by prescribed fire.
- Forest restoration in targeted areas of high value, such as remnant stands of old ponderosa pine, watersheds with impaired function, or other unique cultural or ecological features. Treatment types will be individually tailored to these sites.
- Home hardening, defensible space, and other community resiliency projects in existing Northeast Oregon Firewise Communities including Pine Valley, Eagleton, South Wallowa Lake and Lostine, in addition to communities in the process of becoming Firewise using the Small Forestland Grant. Projects will utilize local contractors, NW Youth Corps, Baker Resources' intern program, Wallowa Resources' HAWK High School program, ODF crews, and local landowner investment.
- Cross-boundary forest restoration monitoring by extending our existing all lands monitoring protocol to private lands within the prioritized project areas, and providing useful information on which to base recommendations to the Legislative Assembly within the biennium with support from SB762.
- Activities would complement extensive region-wide coordinated efforts to restore forests to more fire resilient conditions; reduce fire transmission between public, private, and tribal lands; and reduce wildfire risk to people, property, and our economy.

The projects outlined in all three proposals are urgent, with hundreds of thousands of acres departed from historic or resilient conditions, the need for quality restoration, monitoring, and adaptive management, and the resulting social license, is essential to increasing the pace and scale of this critically important work. The NBAL Partnership enthusiastically supports all three proposals.

In addition to Northern Blues partner support – the literature coming from our region also supports the goals and objectives outlined within this proposal (see bibliography in attachment C):

- Northeastern Oregon enjoys broad public support for treatments leading to reduced fire risk and enhanced forest health outlined within this proposal (Hartert, et al., 2017).
- Wildfire was the central and overriding factor influencing historic forest structure in our region, creating fine- and course-scale variability in habitat and species composition (Hessburg et al., 2007).
- Our dry forests (both ponderosa pine and mixed conifer) had frequent, low severity fire regimes (12 – 25 years) (Heyerdahl, et al., 2001; Johnston, et al., 2016; Johnston, 2017).

- The trend of exclusion of low severity fire, and excess of high severity fire, has resulted in dramatic departure from historic stand conditions (Haugo, et al., 2015; DeMeo, et al., 2018).

In summary, if funded, combined these three proposals will (1) improve the capacity of our Partnership to reduce wildfire risk, and protect human life, critical infrastructure, watershed health, and other locally identified priorities within each of our county's CWPP's on public and private forestlands, (2) focus on forest and rangeland resiliency treatments on lands located in within our extreme and high risk watersheds and eNVC class 4 risk HUC-10 watersheds including Cabin Creek - Grande Ronde River, Looking Glass Creek, Lower Willowa River and Middle Imnaha River, (3) include and have projects adjacent to priority federal lands, (4) expand on existing GNA, Joint Chiefs, Northern Blues CFLRP, RCPs, OWEB, and EQIP funding and projects, (5) be supported by our Northern Blues All Lands Partnership – which is committed to leveraging existing funding and contributing to all-lands stewardship and forestland wildfire risk reduction that crosses multiple ownerships and (6) be implemented by June 30, 2023. We believe these proposals have great potential to help restore social and ecological resilience across the Northern Blue Mountains and we highly encourage the Review team to support them.

Sincerely,



██████████
██████████

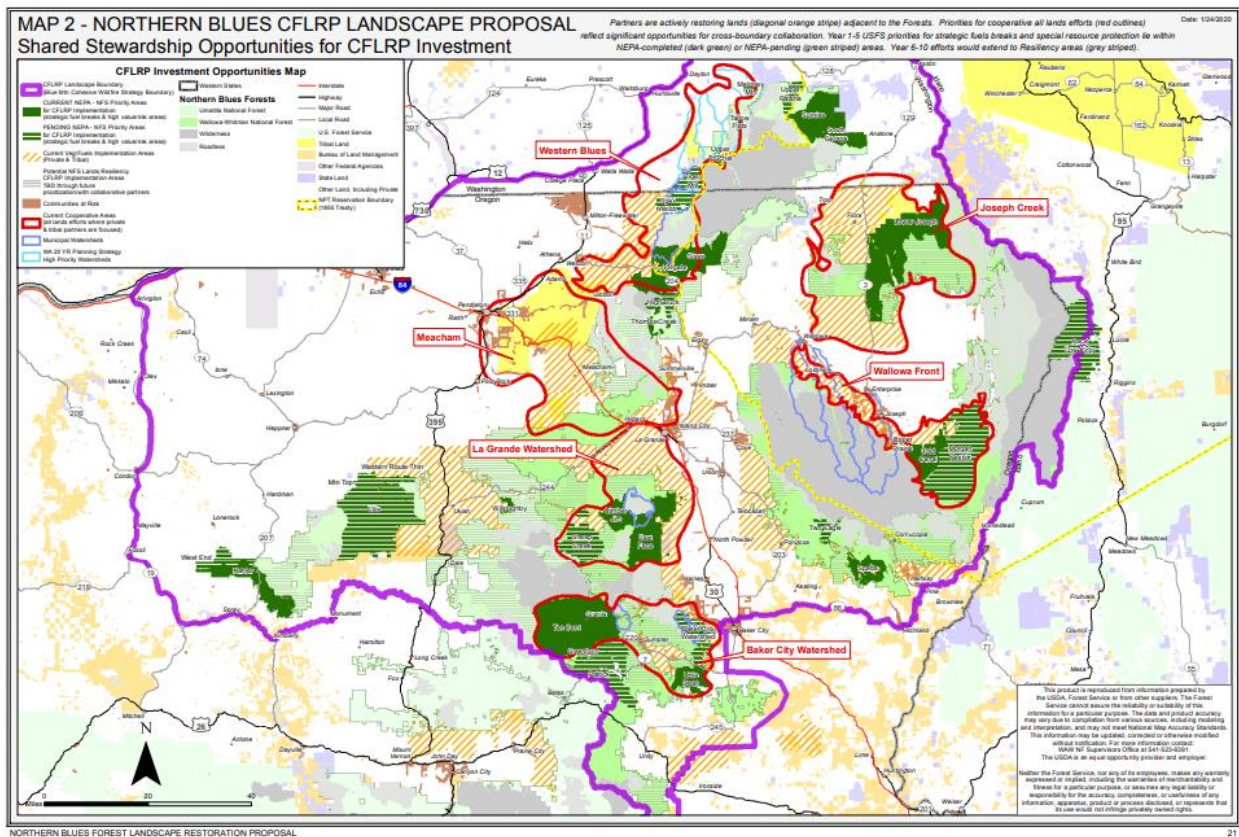
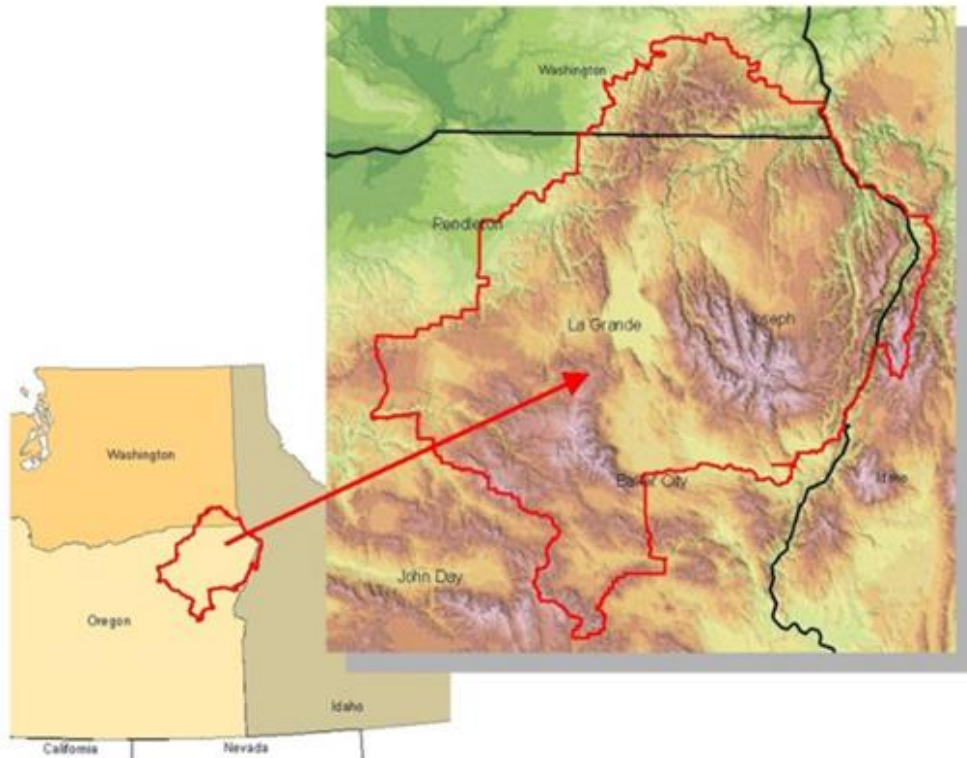
Wallowa Resources

Liaison from Northern Blues All Lands Operations Team to Leadership Team

On behalf of the Northern Blues All Lands Partnership (MOU Signatories)

- | | |
|--|---|
| <ul style="list-style-type: none"> • Blue Mountain Cohesive Strategy Partnership • My Blue Mountains Woodland Partnership • Northern Blues Forest Collaborative • Eastern Oregon Counties Association • Natural Resources Conservation Service John Day/Umatilla and Snake River Basins • Oregon Department of Forestry Northeast Oregon District • Oregon State University Extension Service | <ul style="list-style-type: none"> • The Nature Conservancy • Wallowa-Whitman National Forest of the U.S. Forest Service • Washington Department of Natural Resources • Umatilla National Forest of the U.S. Forest Service • Wallowa Resources • Western Environmental Law Center • Woodgrain Lumber and Composites |
|--|---|

Attachment A: Northern Blues All Lands Partnership Landscape (CFLRP/Northern Blues Cohesive Strategy) Project Map outlining shared stewardship opportunities across the Northern Blues Landscape



Attachment B. Northern Blues All Lands Partnership Governance Structure

Our Leadership Team is composed of representatives of agencies/entities with responsibility for forestland management within the Northern Blues.

Our Operations Team serves a supportive administrative role for the Partnership. But the heart of our Partnership are our Project and Resource Teams.

Our Project Teams are assembled by Partnership members to respond to locally or regionally identified treatment priorities. Project Teams include representatives of the project area's landowners, agencies that manage land within the project area, and agencies, organizations/entities that add treatment capacity or other needed resources or skill sets.

Our Resource Teams provide specialized, region-wide support to Project Teams.



Attachment C. Bibliography

Hartter, J. et al., 2017. *Drier Conditions, More Wildfire, and Heightened Concerns about Forest Management in Eastern Oregon. National Issue Brief #127*, s.l.: Carsey School of Public Policy.

Hessburg, P., Salter, R. & James, K., 2007. Re-examining fire severity relations in pre-management era mixed-conifer forests: inferences from landscape patterns of forest structure. *Landscape Ecology*, Volume 22, pp. 5-24.

Heyerdahl, E., Brubaker, L. & Agee, J., 2001. Spatial controls of historical fire regimes: A multiscale example from the Interior West, USA. *Ecology*, 82(3), pp. 660-678.

Johnston, J., Bailey, J. & Dunn, C., 2016. Influence of fire disturbance and biophysical heterogeneity on pre-settlement ponderosa pine and mixed conifer forests. *Ecosphere*, 7(11), p. e01581.

Johnston, J. D., 2017. Forest succession along a productivity gradient following fire exclusion. *Forest Ecology and Management*, Volume 392, pp. 45-57.

Haugo, R. et al., 2015. A new approach to evaluate forest structure restoration needs across Oregon and Washington, USA. *Forest Ecology and Management*, Volume 335, pp. 37-50.

DeMeo, T. et al., 2018. Expanding our understanding of forest structural restoration needs in the Pacific Northwest. *Northwest Science*, 92(1), pp. 18-35.

Number of Panel Reviewer #1		Project Name	NE Oregon Strategic Defensible Space	
Priority	Proposal Scoring Rubric	Possible Points	Reviewer Score	
1	Clearly describes treatment activities and how future condition reduces risk of high severity wildfire	20	20	
Reviewer Comments	@ 146 acres: Remove hazardous fuels on small acreage homesites. Operations will focus on increasing canopy spacing, improving forest health, reducing ladder fuels, and removing decadent small diameter materials. Crews will scatter materials, construct small piles for burning or chipping, or otherwise remove fuels from the site. This proposal seeks to improve fire resilience by implementing a number of targeted, labor-intensive treatments in close proximity to vital infrastructure on private lands. Three specific Defensible Space Projects are described in detail.			
2	Project protects infrastructure, creates shaded fuel breaks along roadways, or is in a Wildfire Risk Class of High or Extreme (HUC 6 watershed)	15	15	
Reviewer Comments	This work will focus on mitigating fuels and reducing the risk of wildfire on private lands, in close proximity to buildings. Skilled local contractors with small-scale, specialized equipment will work near vulnerable infrastructure. There are three specific Defensible Space Projects in high and very high fire hazard areas.			
3	Project treats or protects multiple properties	15	15	
Reviewer Comments	73 small acreage homesites in three project areas.			
4	Proposed treatment(s) address insects and disease, drought mortality, invasive species, storm damage or enhances wildlife habitat	15	6	
Reviewer Comments	Corridor treatments will focus on sensitive areas.			
5	Clearly demonstrates collaborative approach including treatment proximity to previous or planned hazardous fuel treatments	10	10	
Reviewer Comments	Northern Blues All Lands Partnership. There are investments in project planning across ownership boundaries. Funding sources include Collaborative Forest Landscape Restoration Program, Regional Conservation Partnership Program, and Conservation Implementation Strategy grants through the NRCS, tribal mitigation efforts.			
6	Proposed treatment(s) benefit vulnerable populations or under protected properties	10	0	
Reviewer Comments	Could not find information to address this criterium.			
7	Treatment area references a forest management plan or is located within a priority planning area listed in Funding Priority 6	10	10	
Reviewer Comments	Investments in project planning across ownership boundaries incorporate local CWPPs.			
8	Project utilizes non-traditional forest products	5	4	
Reviewer Comments	Local contractors have demonstrated innovative approaches to utilizing small diameter materials. This will offset overall costs and increase the number of acres treated within the scope of this project.			
Final Score		Out of 100	80	

Number of Panel Reviewer #2		Project Name	BE Oregon Strategic Defensible Space	
Priority	Proposal Scoring Rubric	Possible Points	Reviewer Score	
1	Clearly describes treatment activities and how future condition reduces risk of high severity wildfire	20	20	
Reviewer Comments	yes			
2	Project protects infrastructure, creates shaded fuel breaks along roadways, or is in a Wildfire Risk Class of High or Extreme (HUC 6 watershed)	15	10	
Reviewer Comments	high & very high, infrastructure claimed rather than specified			
3	Project treats or protects multiple properties	15	15	
Reviewer Comments	yes			
4	Proposed treatment(s) address insects and disease, drought mortality, invasive species, storm damage or enhances wildlife habitat	15	5	
Reviewer Comments	unclear although risks noted, broad strokes in included Northern Blues All Lands letter			
5	Clearly demonstrates collaborative approach including treatment proximity to previous or planned hazardous fuel treatments	10	10	
Reviewer Comments	yes			
6	Proposed treatment(s) benefit vulnerable populations or under protected properties	10	5	
Reviewer Comments	noted rather than specified			
7	Treatment area references a forest management plan or is located within a priority planning area listed in Funding Priority 6	10	10	
Reviewer Comments	yes			
8	Project utilizes non-traditional forest products	5	0	
Reviewer Comments	not specified			

Final Score

Out of
100

75

Number of Panel Reviewer #3		Project Name	NE Oregon Strategic Defensible Space	
Priority	Proposal Scoring Rubric	Possible Points	Reviewer Score	
1	Clearly describes treatment activities and how future condition reduces risk of high severity wildfire	20	18	
Reviewer Comments	Very good description provided, clear how activities reduce high severity wildfire risk			
2	Project protects infrastructure, creates shaded fuel breaks along roadways, or is in a Wildfire Risk Class of High or Extreme (HUC 6 watershed)	15	15	
Reviewer Comments	Yes			
3	Project treats or protects multiple properties	15	15	
Reviewer Comments	Yes			
4	Proposed treatment(s) address insects and disease, drought mortality, invasive species, storm damage or enhances wildlife habitat	15	10	
Reviewer Comments	Mentions insects and disease, but could have used more description.			
5	Clearly demonstrates collaborative approach including treatment proximity to previous or planned hazardous fuel treatments	10	10	
Reviewer Comments	Yes, map provides excellent context			
6	Proposed treatment(s) benefit vulnerable populations or under protected properties	10	5	
Reviewer Comments	More detail on benefits to vulnerable communities would strengthen the application (it's referenced, but not in great detail)			
7	Treatment area references a forest management plan or is located within a priority planning area listed in Funding Priority 6	10	10	
Reviewer Comments	Yes, multiple plans			
8	Project utilizes non-traditional forest products	5	0	
Reviewer Comments	Not clear in the application			
Final Score		Out of 100	83	

Number of Panel Reviewer # 4		Project Name	NE Oregon Strategic Defensible Space Projects	
Priority	Proposal Scoring Rubric	Possible Points	Reviewer Score	
1	Clearly describes treatment activities and how future condition reduces risk of high severity wildfire	20	20	
Reviewer Comments	The projects defines treatments for the Wallowa region very well.			
2	Project protects infrastructure, creates shaded fuel breaks along roadways, or is in a Wildfire Risk Class of High or Extreme (HUC 6 watershed)	15	15	
Reviewer Comments	Multiple roads and structure will receive benefits from the proposed treatments			
3	Project treats or protects multiple properties	15	15	
Reviewer Comments	Multiple properties are included within the treatment area			
4	Proposed treatment(s) address insects and disease, drought mortality, invasive species, storm damage or enhances wildlife habitat	15	12	
Reviewer Comments	The treatments are focused on wildfire protection but will also improve these issues			
5	Clearly demonstrates collaborative approach including treatment proximity to previous or planned hazardous fuel treatments	10	10	
Reviewer Comments	This is clearly a collaborative approach among multiple agencies within Eastern Oregon and the Enterprise area			
6	Proposed treatment(s) benefit vulnerable populations or under protected properties	10	7	
Reviewer Comments	The area includes rural residence that all will benefit and also have a need for such treatments			
7	Treatment area references a forest management plan or is located within a priority planning area listed in Funding Priority 6	10	6	
Reviewer Comments	The plan is located within a region that is under high fires risk consideration. However, the plan does not identify any specific forest plans			
8	Project utilizes non-traditional forest products	5	3	
Reviewer Comments	Non-traditional forest products the likes of firewood, mulch and logs will be made available to local landowners			
Final Score		Out of 100	88	

Number of Panel Reviewer # 5		Project Name	NEO Strategic Defensible Space	
Priority	Proposal Scoring Rubric	Possible Points	Reviewer Score	
1	Clearly describes treatment activities and how future condition reduces risk of high severity wildfire	20	10	
Reviewer Comments	Treatment activities listed but lack metrics/specificity, good job providing existing conditions, what do future conditions look like?			
2	Project protects infrastructure, creates shaded fuel breaks along roadways, or is in a Wildfire Risk Class of High or Extreme (HUC 6 watershed)	15	13	
Reviewer Comments	High and Very High risk, roadside buffers (shaded fuel breaks?) defensible space of 18+30, +25 homesites, total number would have been nice			
3	Project treats or protects multiple properties	15	15	
Reviewer Comments	Over 50 homesites protected			
4	Proposed treatment(s) address insects and disease, drought mortality, invasive species, storm damage or enhances wildlife habitat	15	7	
Reviewer Comments	State that current condition has additional resource concerns, but treatment activities are not clearly linked to improving these resource concerns			
5	Clearly demonstrates collaborative approach including treatment proximity to previous or planned hazardous fuel treatments	10	7	
Reviewer Comments	Good collaborative approach. Proximity to previous or planned treatments could have been improved, or amounts provided on previous outreach efforts			
6	Proposed treatment(s) benefit vulnerable populations or under protected properties	10	5	
Reviewer Comments	Mentioned previous outreach has helped engage potentially vulnerable populations, but does not quantify amount of vulnerable landowners supported through this project			
7	Treatment area references a forest management plan or is located within a priority planning area listed in Funding Priority 6	10	5	
Reviewer Comments	Good description of strategic planning, but only mentions one priority planning area and does not explicitly mention how activities fit into listed plan.			
8	Project utilizes non-traditional forest products	5	2	
Reviewer Comments	States contractors are good at utilizing cut material but does not quantify amount nor how this approach will reduce project cost.			
Final Score		Out of 100	64	