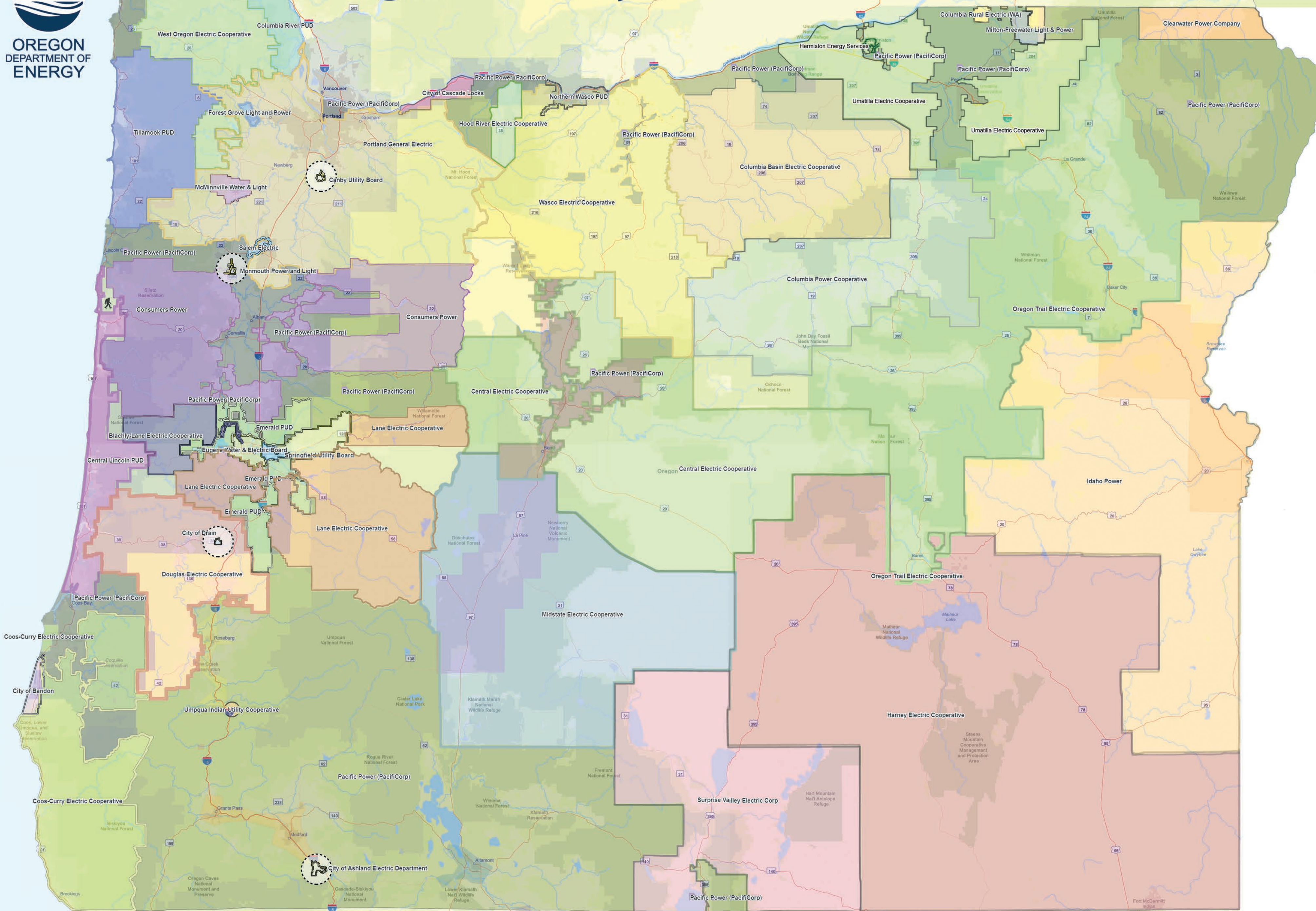




Oregon Utility Territories Investor-Owned Utilities, People's Utility Districts, Cooperatives, and Municipalities



Cooperative Owned Utilities

- Blachly-Lane Electric Cooperative
- Central Electric Cooperative
- Clearwater Power Company
- Columbia Basin Cooperative
- Columbia Power Cooperative
- Columbia Rural Electric (WA)
- Consumers Power
- Coos-Curry Electric Cooperative, Inc.
- Douglas Electric Cooperative
- Harney Electric Cooperative
- Hood River Electric Cooperative
- Lane Electric Cooperative
- Midstate Electric Cooperative, Inc.
- Oregon Trail Electric Cooperative
- Salem Electric
- Surprise Valley Electric Corporation
- Umatilla Electric Cooperative
- Umpqua Indian Utility Cooperative
- Wasco Electric Cooperative
- West Oregon Electric Co-op, Inc.

Investor Owned Utilities

- Idaho Power Company
- Pacific Power (PacifiCorp)
- Portland General Electric

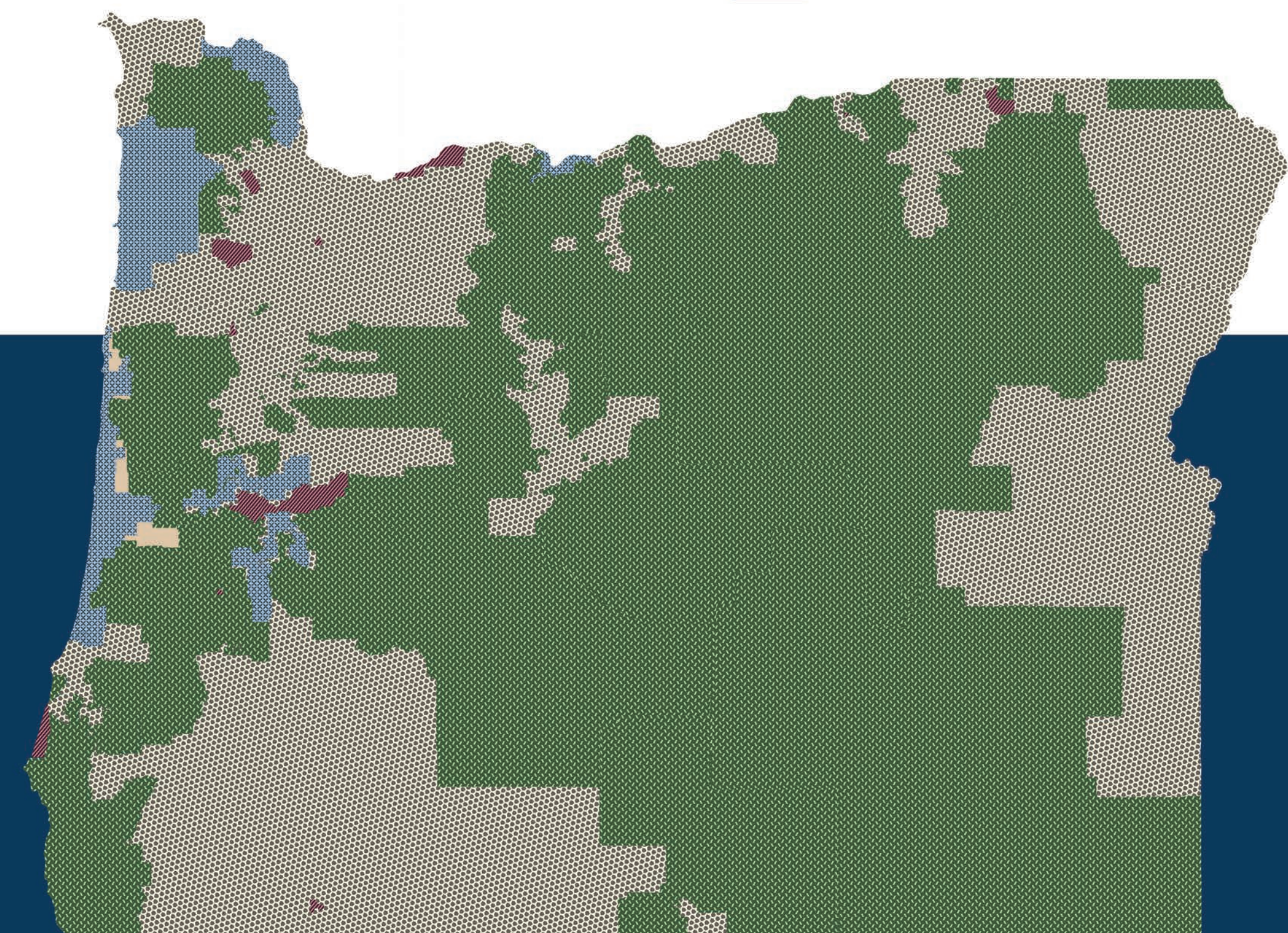
Municipal Electric Utilities

- Canby Utility Board
- City of Ashland Electric Department
- City of Bandon
- City of Cascade Locks
- City Of Drain
- City of Forest Grove Light & Power
- City of Monmouth
- Eugene Water & Electric Board
- Hermiston Energy Services
- McMinnville Water & Light
- Milton-Freewater City Light & Power
- Springfield Utility Board

People's Utility Districts

- Central Lincoln PUD
- Clatskanie PUD
- Columbia River PUD
- Emerald PUD
- Northern Wasco PUD
- Tillamook PUD

**Territory lines are approximate and areas of overlap regularly occur.*

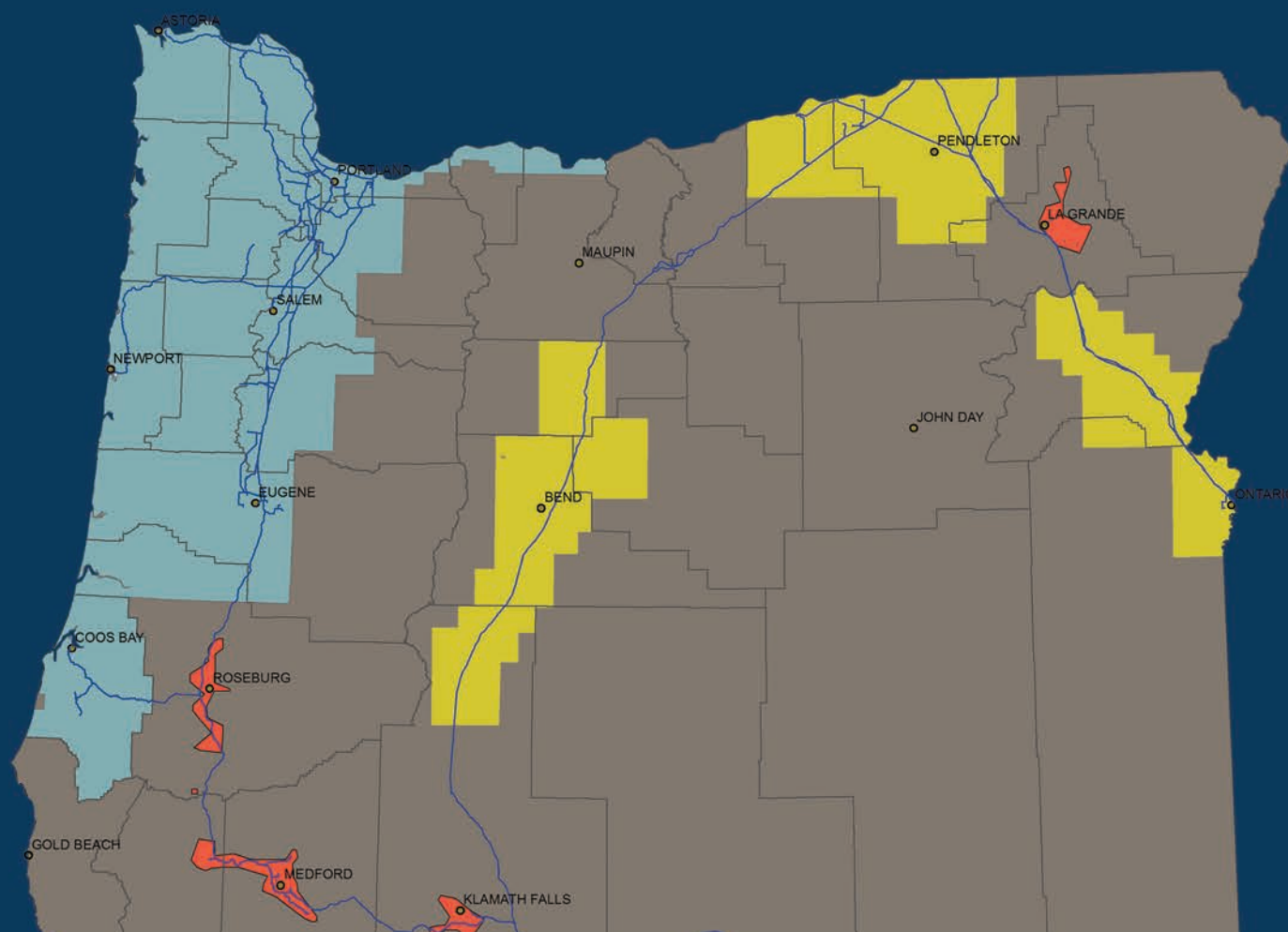


Oregon is served by three natural gas utilities, three investor-owned electric utilities, and 38 consumer- or publicly-owned electric utilities.

An interactive version of this map is available on the Oregon Department of Energy's website:

www.tinyurl.com/FindYourUtility

Last updated 12/2/2021



Electric Utility Types

- Cooperative Owned Utilities
- Investor Owned Utilities
- Municipal Electric Utilities
- People's Utility Districts
- No identified type

Natural Gas Utilities

- NW Natural
- Cascade Natural Gas
- Avista