

# Welcome to the School Bus Electrification Webinar.

## Part 1: Funding Opportunities

Workshop Section	Topic & Action	Time
<b>Introductions</b>	<ul style="list-style-type: none"> <li>▪ Welcome</li> <li>▪ Overview</li> </ul>	1:00 – 1:10 pm
<b>Brock Dittus</b> <i>Department of Education</i>	<ul style="list-style-type: none"> <li>▪ State School Fund, Transportation Grant</li> </ul>	1:10 – 1:20 pm
<b>Christie Sphoon</b> <i>Schools Program Lead, ODOE</i>	<ul style="list-style-type: none"> <li>▪ Public Purpose Charge (SB 1149) Program</li> </ul>	1:20 – 1:30 pm
<b>Cory-Ann Wind</b> <i>Clean Fuels Program, DEQ</i> <b>Morgan Schafer</b> <i>AQ Planning, DEQ</i>	<ul style="list-style-type: none"> <li>▪ Clean Fuels Program</li> <li>▪ Diesel Reduction Grants</li> <li>▪ Other Funding Opportunities</li> </ul>	1:30 – 1:45 pm
<b>All</b>	<ul style="list-style-type: none"> <li>▪ Q &amp; A Time</li> </ul>	1:45 – 2:00 pm





OREGON  
DEPARTMENT OF  
EDUCATION

*Oregon achieves . . . together!*

State School Fund

# Transportation Grant

**Brock Dittus**

Operations & Policy Analyst, Pupil Transportation  
Oregon Department of Education

# The Grant

- Estimate of Membership and Revenue > Reconciled with Actual Financial data and Pupil Transportation reports.
- Largest Grant in the state school fund
  - \$235,663,797 - 19-20
  - 70, 80, 90 % reimbursement based on Cost per ADMr



# Life-cycle of Transportation Grant

Prelim Est. December 2019	Jul-20	August	September	October	November	December	Jan-21	February	March	April	May-21	
December of the previous year Estimate of membership and Revenue	Start paying based on estimate from Dec 2019							Updated with December 2020 EMR				
	Jul-21	August	September	October	November	December	Jan-22	February	March	April	May 2022	
			20-21 SY Transporta tion reports Due				20-21 Annual Financial audit due				Final Grant for 20-21 SY paid based on Annual Financial data and Transporation Report	

# Estimate of Membership and Revenue data collection

3. Estimate of Net Transportation Cost	Current Year 2018-19	Projected 2019-20
including bus/garage allowable depreciation and net of transportation receipts and non-reimbursable mileage	40000	40000

# Pupil Transportation reports

OREGON DEPARTMENT OF EDUCATION  
Public Service Building  
255 Capitol Street NE  
Salem, OR 97310-0203

SEP 06 2019

Office of Educational Support Services  
School Finance, Data & Analysis

**BUS AND GARAGE DEPRECIATION  
SCHEDULE AND MILEAGE REPORT**

Coos

Bandon SD 54

Year Ending June 30, 2019

Please send the completed original to the Oregon Department of Education by September 3.

**Part I** *All districts must complete Part 1 questions a and b.*

These figures will be used to reduce the State School Fund, Annual Transportation Grant. Please include only miles recorded in Fund 100-General Fund, Function 2550-Student Transportation Services. Exclude miles reimbursed through revenue recorded in Fund 100-General Fund, Function/Source 1400-Transportation Fees.

The total non-reimbursable miles (e.g. activity/sports trips, service within 1 and 1.5 mile limit) reported in:

- a. Vehicles designed for a capacity of 20 or less 4,107.00 miles @ \$1.31 = 5,380.17  
 b. Vehicles designed for a capacity of 21 or more 19,504.00 miles @ \$2.62 = 51,100.48

**Part II**

Listed below are district-owned garages and student transportation vehicles according to last year's report that have not been fully depreciated. Please delete items disposed of and add items acquired and received during fiscal year. Do not list any vehicle used predominantly for non-reimbursable purposes:

Fleet No.	License Number	Type of Asset	Bus Body	Bus Chassis	First Year Reported	Value for Depreciation Purposes	Depreciation Already Allowed up to June 30, 2018	Allowable Depreciation 2018-2019
61	E245375	Bus	2006	IC	2011	\$72,200.00	\$57,760.00	\$7,220.00
51	E254351	Bus	2010 Collins	Chevrolet	2012	\$52,801.00	\$36,960.70	\$5,280.10
100	E254359	Bus	2012 Bluebird	Bluebird	2012	\$97,486.00	\$68,240.20	\$9,748.60
101	E254360	Bus	2012 Bluebird	Bluebird	2012	\$97,486.00	\$68,240.20	\$9,748.60
104	E263598	Bus	2015 IC	IC	2015	\$113,000.00	\$45,200.00	\$11,300.00
105	SC08794	Bus	2015 IC	IC	2017	\$113,000.00	\$22,600.00	\$11,300.00
106	SC08923	Bus	2015 Bluebird	Bluebird	2019	\$83,000.00	\$0.00	\$8,300.00

**Total depreciation for items listed: \$62,897.30**

# Break down ADMr

Example:  $\$500,000 / 250 \text{ ADMr} = \$2,000$

Top 20 districts with the highest costs per ADMr receive 90%

Next 20 receive 80%

The 157 remaining districts receive 70%

# Transportation Grant

## 2017-2018 Transportation Grant

Salaries	=	\$277,479.00
Payroll	=	\$166,287.00
Purchased Services	=	\$28,462.00
Supplies	=	\$91,643.00
Other	=	\$46,279.00
Garage Depreciation	=	\$0.00
Bus Depreciation	=	\$111,184.00
Fees Collected	=	\$0.00
Non-Reimbursable	=	(\$82,688.00)
Net Eligible Trans. Expend.	=	\$638,646.00
Trans per ADMr Rank.	<b>43%</b>	Transportation Reimburs. Rate <b>70.00%</b>
Grant (Rate* Net Eligible Expend)	=	<b>\$447,052.20</b>

Financial  
Audit data

Transportation  
reports



# Transportation Calculation

## **Add in Bus Garage, Bus and Capital Bus Improvements Depreciation**

- Form 581-3171 Bus and Garage Depreciation Schedule and Mileage Report
- Be sure to include Capital Bus Improvement (costs over \$5,000)

# Transportation Calculation

## **Deduct all General Fund (100) Transportation Reimbursements**

- Transportation Fees from Individuals (1411)
- Transportation Fees from Other Districts Within the State (1412)
- Transportation Fees from Other Districts Outside the State (1413)

# Transportation Calculation

## **Deduct all non-reimbursable miles**

- Form 581-3171 Bus and Garage Depreciation Schedule and Mileage Report
- Current rate for vehicles 20 or less/21 or more

## **Do NOT include:**

- Non-reimbursable miles recorded outside the General Fund (100)
- Non-reimbursable miles recorded in the General Fund (100), but where transportation fees were collected and recorded

# Reporting

Do NOT include grant bus or bus improvement purchases on Form 581-3171 Bus and Garage Depreciation Schedule and Mileage Report.

September Transportation Reports are for Previous year. Example: 19-20 bus purchases go on the September 2020 depreciation report not September 2019.



# Important Dates, Collections, and web Links

6/11/20 – 8/31/20: Transportation Information 19-20

10/24/20 – 12/20/20: Estimate of Membership and Revenue

<https://district.ode.state.or.us/apps/info/>

Transportation Reports web page:

<https://www.oregon.gov/ode/schools-and-districts/ptf/Pages/Reports.aspx>

School Bus Forms

<https://www.oregon.gov/ode/schools-and-districts/ptf/Pages/School-Bus.aspx>

# Questions

State School Fund or Transportation Grant Questions:

[Adam.Krein@ode.state.or.us](mailto:Adam.Krein@ode.state.or.us)

503-947-5678

Transportation reports, Form 581-3171 Bus and  
Garage Depreciation Schedule and Mileage Reports  
Questions:

[Brock.Dittus@ode.state.or.us](mailto:Brock.Dittus@ode.state.or.us)

[buslicense@ode.state.or.us](mailto:buslicense@ode.state.or.us)

503-947-5724

# Oregon Department of **ENERGY**

Electric School Bus  
Funding

March 8, 2022





# OREGON DEPARTMENT OF ENERGY

---



**Christie Sphoon**  
*Schools Program Lead*

550 Capitol Street N.E., 1st Floor  
Salem, OR 97301

[Christie.l.sphoon@energy.oregon.gov](mailto:Christie.l.sphoon@energy.oregon.gov)  
503.689.0500 **DIRECT**  
[Oregon.gov/energy](http://Oregon.gov/energy)



**Evan Elias**  
*Transportation and Fuels Energy Analyst*

550 Capitol Street N.E., 1st Floor  
Salem, OR 97301

[Evan.m.elias@energy.oregon.gov](mailto:Evan.m.elias@energy.oregon.gov)  
503.510.1462 **DIRECT**  
[Oregon.gov/energy](http://Oregon.gov/energy)

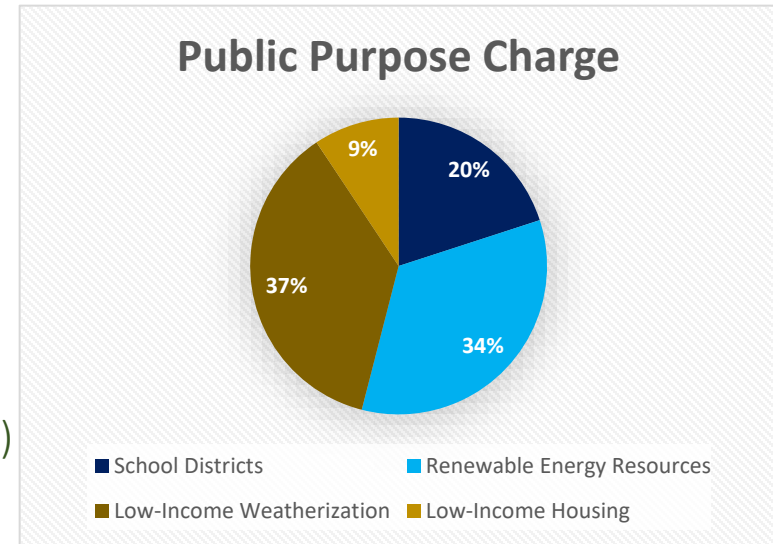
# PUBLIC PURPOSE CHARGE (SB 1149) PROGRAM

## Effective January 1, 2022:

- Public Purpose Charge is 1.5% on electric bills

### \* Percentage of funds allocated:

- school districts 0.3% of 1.5% (20%)
- renewable energy resources 0.51% of 1.5% (34%)
- low-income weatherization 0.55% of 1.5% (36.7%)
- low-income housing 0.14% of 1.5% (9.3%)



- \* Public Purpose Charge goes through January 01, 2036

# PUBLIC PURPOSE CHARGE (SB 1149) PROGRAM

## ***Eligible School Districts:***

- Public K-12 facilities in PGE or Pacific Power
- Currently 111 eligible Districts
- % of funds per District based on eligible schools and students

## **SB 1149 Schools Program**

Funds must first be used to complete:

- Energy audits within educational facilities
- Fleet audit of eligible school districts

Then can be used for:

- Energy efficiency measures
- Zero emission vehicles (including buses)
- Electric vehicle chargers

Funds distributed monthly to eligible Districts

Eligible projects all have SB 1149 maximum reimbursement

SB 1149 funding considered reimbursement after project completion and final cost data submitted to ODOE

# PUBLIC PURPOSE CHARGE (SB 1149) PROGRAM

---

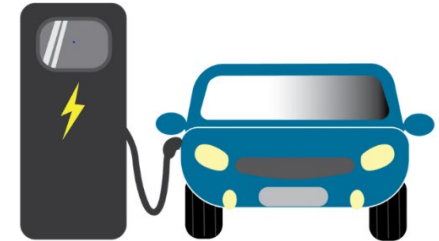
## Fleet audits, electric vehicles and electric vehicle chargers

### **Step 1: Complete and Submit Fleet Audit**

Complete fleet audit spreadsheet available on ODOE website and submit to ODOE

### **Step 2: Complete and Submit Form for Vehicle/Charging Station Type**

Complete Light Duty Vehicle and Charging Station Form or Electric Bus and Bus Charging Form on ODOE website and submit to ODOE



[https://www.oregon.gov/energy/energy-oregon/Pages/Public-Purpose-Charge-\(SB-1149\)-Fleet-Audits-Electric-Vehicles-and-Charging-Stations.aspx](https://www.oregon.gov/energy/energy-oregon/Pages/Public-Purpose-Charge-(SB-1149)-Fleet-Audits-Electric-Vehicles-and-Charging-Stations.aspx)

# PUBLIC PURPOSE CHARGE (SB 1149) PROGRAM

---

## Fleet audits, electric vehicles and electric vehicle chargers

### **Step 3: ODOE Review of Forms**

ODOE will review forms for completeness and will request any additional info. Once reviewed and approved, ODOE will add an eligible measure to Schools Database and send Notice to school district

### **Step 4: Submit Confirmation of Purchase/Lease to ODOE**

School district to submit final cost information to ODOE for review. ODOE will review and will notify school district of eligible amount of SB 1149 funds for reimbursement



# PUBLIC PURPOSE CHARGE (SB 1149) PROGRAM

## Fleet audits, electric vehicles and electric vehicle chargers

### Eligible SB 1149 funds for reimbursement:

Expenditure Type	SB 1149 Eligible Amount for Reimbursement
Electric Vehicle Charger	Full cost for Level 1 & 2 chargers, DC Fast Chargers reviewed by ODOE
Battery Electric Light Duty Vehicle	Up to \$20,000
Plug in Hybrid Light Duty Vehicle	Up to \$15,000
Type A Electric Bus	Up to \$250,000
Type C/D Electric Bus	Up to \$300,000



*\* SB 1149 eligible amounts not to exceed 100% of cost with any other grants, incentives, etc. Eligible amounts will be reviewed by ODOE periodically and may change. Please review most current forms on ODOE's website for most current amounts.*

# 2022 UPCOMING EVENTS

Event	Date/Time	Link
<b>School Bus Electrification: Funding Webinar</b>	<b>March 8, 1pm</b>	<a href="#">State of Oregon: Energy in Oregon - Business &amp; Government Fleets</a>
Public Purpose Charge (SB 1149) Schools Program - 2022 Outreach webinar	March 9, 9 – 10am	<a href="https://www.oregon.gov/energy/energy-oregon/Pages/SB1149.aspx">https://www.oregon.gov/energy/energy-oregon/Pages/SB1149.aspx</a>
School Bus Electrification: Technical Webinar	March 15, 1pm	<a href="http://www.oregon.gov/energy/energy-oregon/Pages/Fleets.aspx">http://www.oregon.gov/energy/energy-oregon/Pages/Fleets.aspx</a>
Public Purpose Charge (SB 1149) Schools Program - 2022 Outreach webinar (repeat)	April 5, 9 – 10am	<a href="https://www.oregon.gov/energy/energy-oregon/Pages/SB1149.aspx">https://www.oregon.gov/energy/energy-oregon/Pages/SB1149.aspx</a>
Bonds, Ballots and Buildings Conference *ODOE not attending, but materials available at ETO vendor booth	April 8, 7:30 – 3:30pm	<a href="https://www.osba.org/Calendar/Events/Bonds_Ballots_And_Buildings-2022.aspx">https://www.osba.org/Calendar/Events/Bonds Ballots And Buildings-2022.aspx</a>
OSFMA Conference *ODOE and ETO attending Trade Show with booth(s)	April 14, 9 – 4pm	<a href="https://www.osfma.org/Annual-Conference">https://www.osfma.org/Annual-Conference</a>
OASBO Conference *ODOE and ETO attending Trade Show with booth(s)	July 27 – 29	<a href="https://oasbo.com/page/events">https://oasbo.com/page/events</a>

**Future webinars and conferences coming soon!**

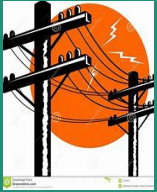


## Accelerating the Transition to Electric School Buses

Morgan Schafer, AQ Planning & Cory-Ann Wind, Clean Fuels Program



# Different Types of Clean Fuels Credits



## Base Credits

- Generation occurs on a quarterly basis
- Calculated from the difference between the carbon intensity of gasoline and your utility's electricity mix



## Incremental Credits

- Generation occurs on a quarterly basis
- Retire RECs to access zero carbon electricity
- Calculated from the difference between your utility's mix and zero

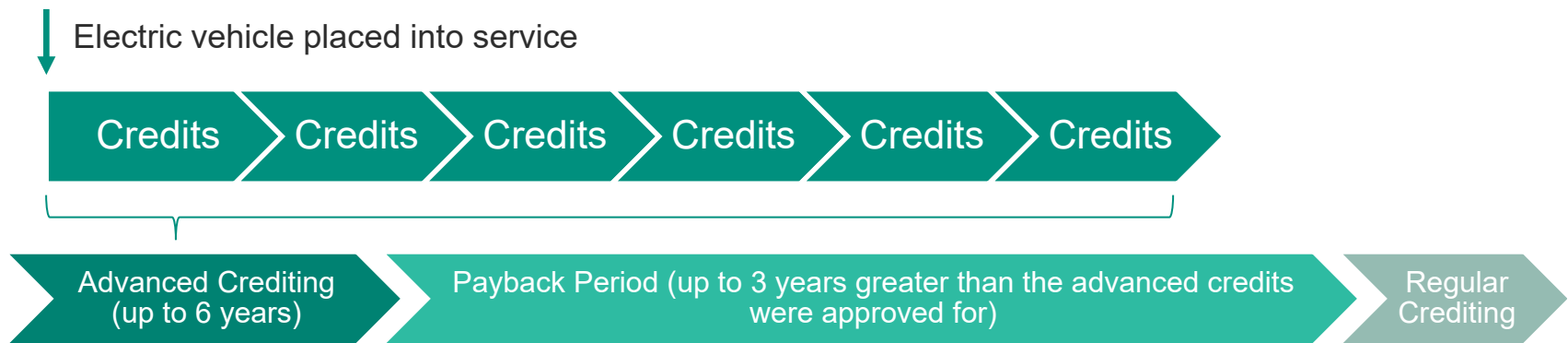


## Advance Credits

- Calculated from an estimate of miles/electricity is used over a period of time, up to 6 years
- Acts as an up-front loan

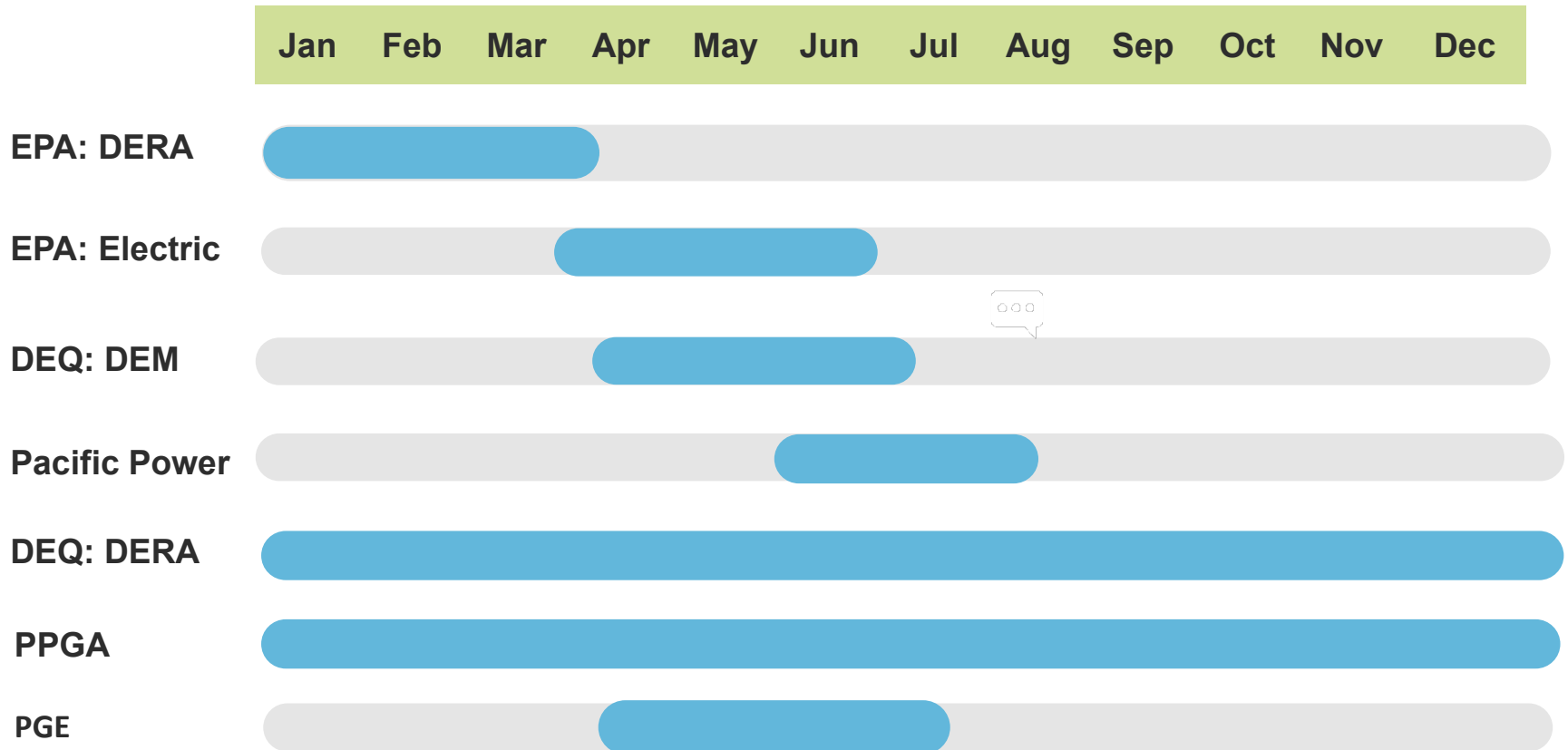
# Advance Credits: The Basic Concept

Regular credit generation occurs on a quarterly basis when the credit generator submits their quarterly report about how much electricity was dispensed from a charger.



Advanced crediting is when DEQ grants up to 6 years' worth of credits when the first electric vehicle is placed into service.

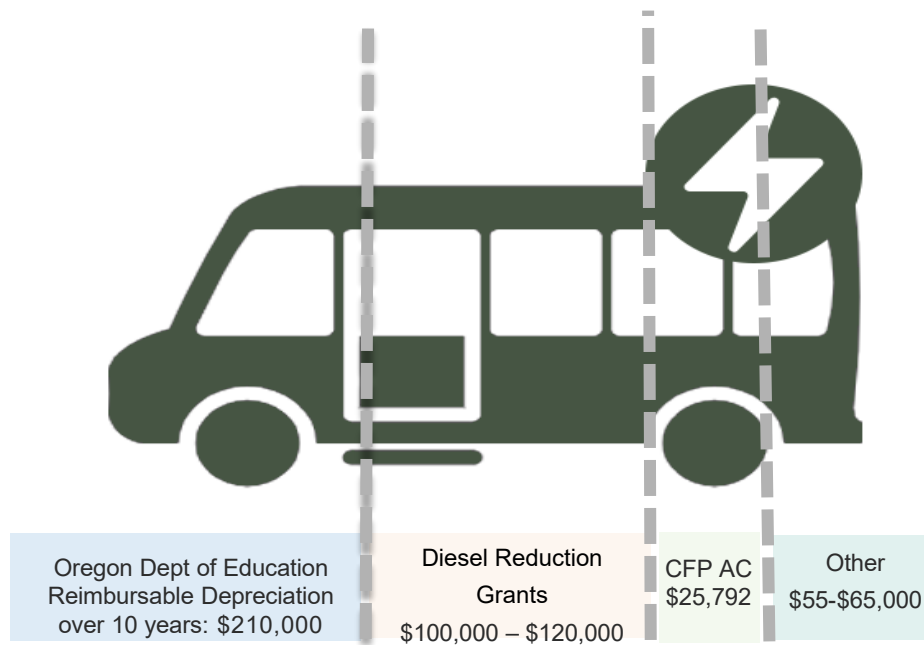
# Funding Opportunities for School Buses



Funding opportunities for grants and rebates show administering agency and application start and ending period for 2022.

# How to Fund an Electric School Bus

The cost of a Class A electric school bus is approximately \$400,000



# Next Steps

---

- Sign up for [Public Notices](#) for updates on the advance crediting application
- Use ODOE's NEW Electric School Bus Cost Tool
- Track your miles for your electric vehicle
- Contact your utility for potential funding and support
- Purchase additional electric vehicles

# Q & A

---

- We will begin with questions from the chat
- You should also be able to raise your hand and unmute at this point

# Oregon Department of **ENERGY**

Electric School Bus  
Funding

March 8, 2022

# Thank you

**Part 2: Tech Tools is scheduled for March 15, 2022, 1:00 p.m.**

